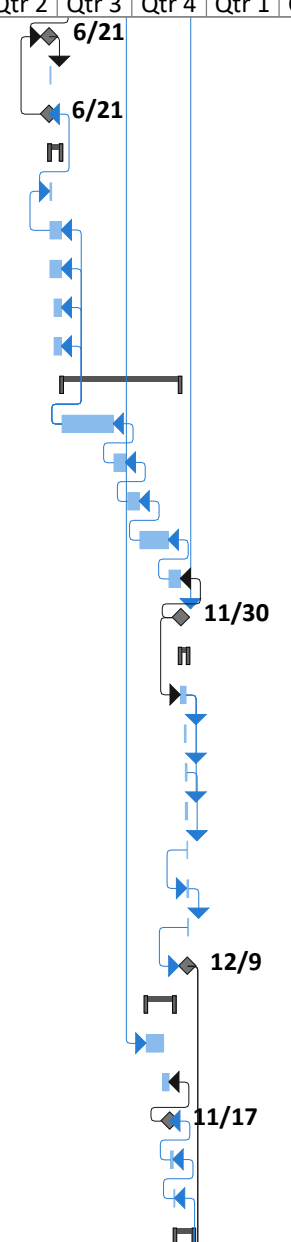
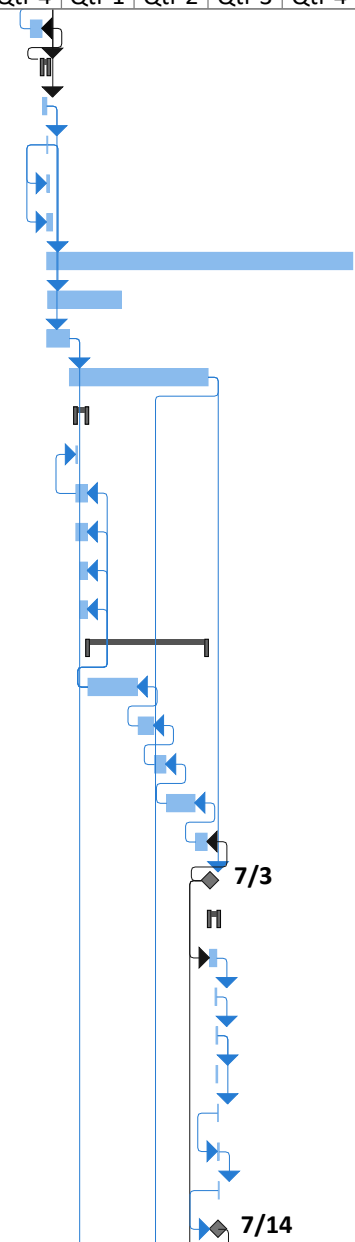


(Installation Name)							PP Package: Initial Outfitting Schedule															
ID	Task Mode	Task Name	Duration	Start	Finish	2021				2022				2023				2024				2025
						Qtr 1	Qtr 2	Qtr 3	Qtr 4	Qtr 1	Qtr 2	Qtr 3	Qtr 4	Qtr 1	Qtr 2	Qtr 3	Qtr 4	Qtr 1	Qtr 2	Qtr 3	Qtr 4	Qtr 1
1	📌	(Installation Name) Award Date	0 days	Mon 5/3/21	Mon 5/3/21																	
2	📌	Notice to Proceed	0 days	Mon 5/3/21	Mon 5/3/21																	
3	➡	Base Security Notification	1 day	Tue 5/4/21	Tue 5/4/21																	
4	➡	Project Kick-Off Meeting	1 day	Fri 5/21/21	Fri 5/21/21																	
5	➡	Construction - Ph 1	350 days	Wed 7/28/21	Tue 11/29/22																	
6	➡	Site Investigations/Destructive Survey	10 days	Thu 7/29/21	Wed 8/11/21																	
7	➡	Hazardous Material Test/Survey	10 days	Thu 7/29/21	Wed 8/11/21																	
8	➡	Govt Review Haz Mat Test (21 cal day)	21 days	Thu 8/12/21	Thu 9/9/21																	
9	📌	IO-T Award	0 days	Thu 8/12/21	Thu 8/12/21																	
10	➡	Design - Hospital Add/Alteration	205 days	Thu 9/9/21	Wed 6/22/22																	
11	📌	Site Survey/Inventory	5 days	Thu 9/9/21	Thu 9/16/21																	
12	➡	Exterior/Interior Mock-Ups	30 days	Thu 1/27/22	Wed 3/9/22																	
13	➡	Submittal # 1	65 days	Fri 9/17/21	Fri 12/17/21																	
14	📌	Charette - Government Mtgs	5 days	Fri 9/17/21	Fri 9/24/21																	
15	📌	Prep Submittal Pkg	30 days	Mon 9/27/21	Mon 11/8/21																	
16	📌	Submit DS1 Pkg	0 days	Tue 11/9/21	Tue 11/9/21																	
17	📌	Govt Review (21 cal days)	15 days	Wed 11/10/21	Wed 12/1/21																	
18	📌	Evaluate Dr Checks Comments	5 days	Thu 12/2/21	Thu 12/9/21																	
19	➡	Resolution Conference	5 days	Fri 12/10/21	Fri 12/17/21																	
20	➡	Submittal # 2	58 days	Mon 12/20/21	Thu 3/10/22																	
21	📌	Prep Submittal Pkg	30 days	Mon 12/20/21	Mon 1/31/22																	
22	📌	Submit DS2 Pkg	0 days	Tue 2/1/22	Tue 2/1/22																	
23	➡	Govt Review (21 cal days)	14 days	Wed 2/2/22	Tue 2/22/22																	
24	📌	Evaluate Dr Checks Comments	5 days	Wed 2/23/22	Wed 3/2/22																	
25	➡	Resolution Conference	5 days	Thu 3/3/22	Thu 3/10/22																	
26	➡	Submittal # 3	72 days	Fri 3/11/22	Tue 6/21/22																	
27	➡	Prep Submittal Pkg	30 days	Fri 3/11/22	Fri 4/22/22																	
28	📌	Submit DS3 Pkg	1 day	Mon 4/25/22	Tue 4/26/22																	
29	📌	Govt Review (21 cal days)	15 days	Wed 4/27/22	Wed 5/18/22																	
30	📌	Evaluate Dr Checks Comments	5 days	Thu 5/19/22	Thu 5/26/22																	
31	📌	Resolution Conference	5 days	Fri 5/27/22	Fri 6/3/22																	
32	📌	100% Final	10 days	Mon 6/6/22	Mon 6/20/22																	

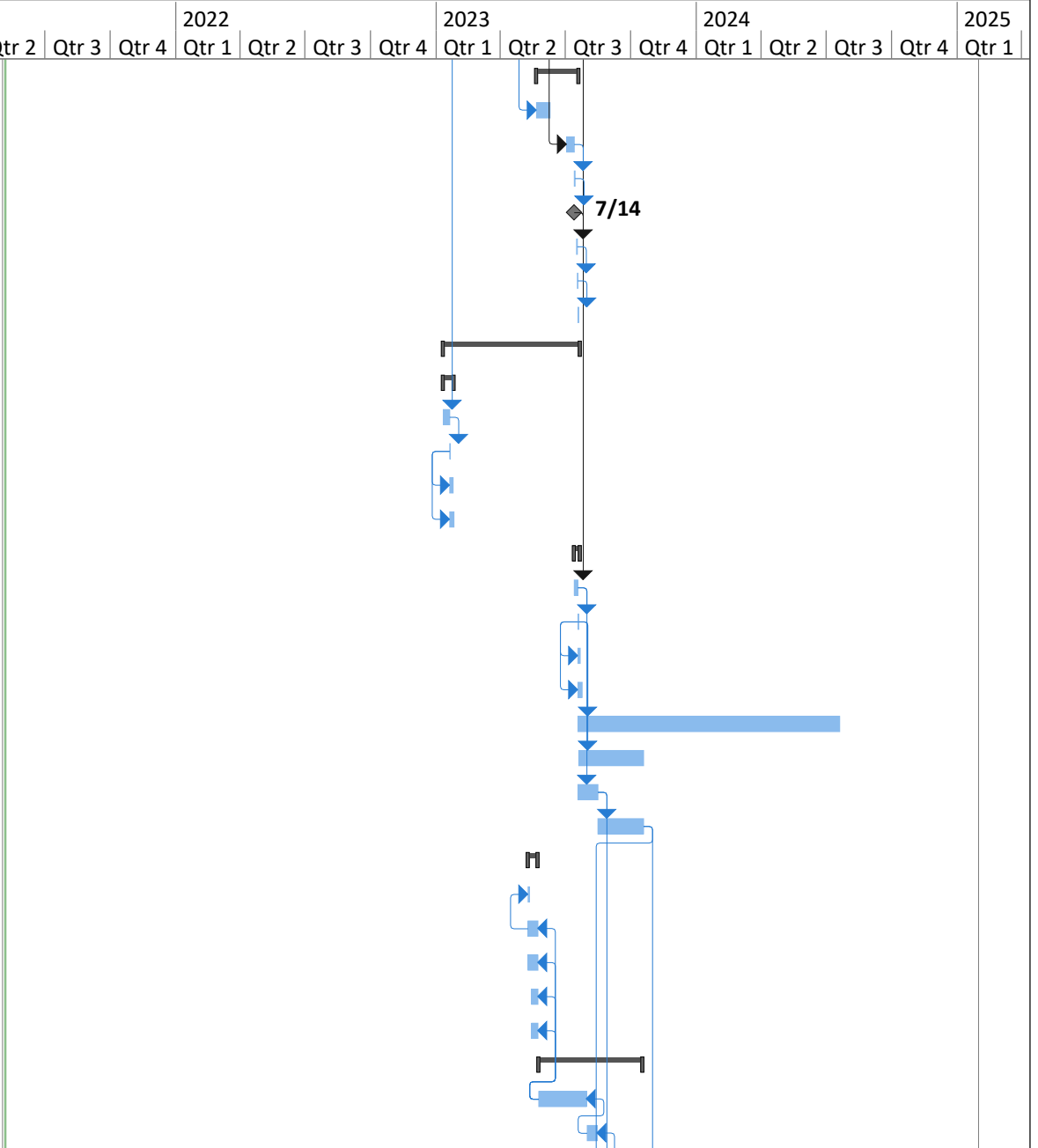
(Installation Name)				PP Package: Initial Outfitting Schedule																		
ID	Task Mode	Task Name	Duration	Start	Finish	2021				2022				2023				2024				2025
						Qtr 1	Qtr 2	Qtr 3	Qtr 4	Qtr 1	Qtr 2	Qtr 3	Qtr 4	Qtr 1	Qtr 2	Qtr 3	Qtr 4	Qtr 1	Qtr 2	Qtr 3	Qtr 4	Qtr 1
33	→	Government Sign Off	0 days	Tue 6/21/22	Tue 6/21/22																	
34	→	Ground Breaking Ceremony	1 day	Wed 6/22/22	Wed 6/22/22																	
35	→	IO-C Award	0 days	Tue 6/21/22	Tue 6/21/22																	
36	→	Procurement - Phase 1	10 days	Wed 6/22/22	Wed 7/6/22																	
37	→	Long Lead Items	2 days	Wed 6/22/22	Thu 6/23/22																	
38	→	Furniture	10 days	Wed 6/22/22	Wed 7/6/22																	
39	→	Equipment	10 days	Wed 6/22/22	Wed 7/6/22																	
40	→	Artwork	7 days	Mon 6/27/22	Wed 7/6/22																	
41	→	Signage	7 days	Mon 6/27/22	Wed 7/6/22																	
42	→	Mfg, Shipping & Warehousing	104 days	Thu 7/7/22	Wed 11/30/22																	
43	→	Manufacturing - Phase 1	45 days	Thu 7/7/22	Thu 9/8/22																	
44	→	Shipping to US Warehouse - Ph 1	10 days	Fri 9/9/22	Fri 9/23/22																	
45	→	Warehousing - Consolidation	10 days	Mon 9/26/22	Mon 10/10/22																	
46	→	Shipping to Intl Whs - Phase 1	25 days	Tue 10/11/22	Tue 11/15/22																	
47	→	Warehousing - Intl - Phase 1	10 days	Wed 11/16/22	Wed 11/30/22																	
48	→	BOD - Phase 1	0 days	Wed 11/30/22	Wed 11/30/22																	
49	→	PP Installation - Ph 1	8 days	Wed 11/30/22	Fri 12/9/22																	
50	→	Initial Outfitting	5 days	Wed 11/30/22	Tue 12/6/22																	
51	→	3rd Party Vendor Installs	2 days	Mon 12/5/22	Tue 12/6/22																	
52	→	Calibration/Testing/Certification	2 days	Tue 12/6/22	Wed 12/7/22																	
53	→	Training (Includes CES)	3 days	Tue 12/6/22	Thu 12/8/22																	
54	→	Govt Inspection	1 day	Thu 12/8/22	Thu 12/8/22																	
55	→	Punchlist Work	2 days	Thu 12/8/22	Fri 12/9/22																	
56	→	Final Inspection & Acceptance	1 day	Fri 12/9/22	Fri 12/9/22																	
57	→	Aseptic Clean	0 days	Fri 12/9/22	Fri 12/9/22																	
58	→	CES Installation - Phase 1	25 days	Wed 10/19/22	Wed 11/23/22																	
59	→	Pre-Wire CES	15 days	Wed 10/19/22	Tue 11/8/22																	
60	→	Final Wiring & Testing	6 days	Tue 11/8/22	Wed 11/16/22																	
61	→	Govt Inspection	0 days	Thu 11/17/22	Thu 11/17/22																	
62	→	Punchlist Work	1 day	Fri 11/18/22	Mon 11/21/22																	
63	→	Final Inspection & Acceptance	1 day	Tue 11/22/22	Wed 11/23/22																	
64	→	Transition Planning	17 days	Thu 11/24/22	Fri 12/16/22																	



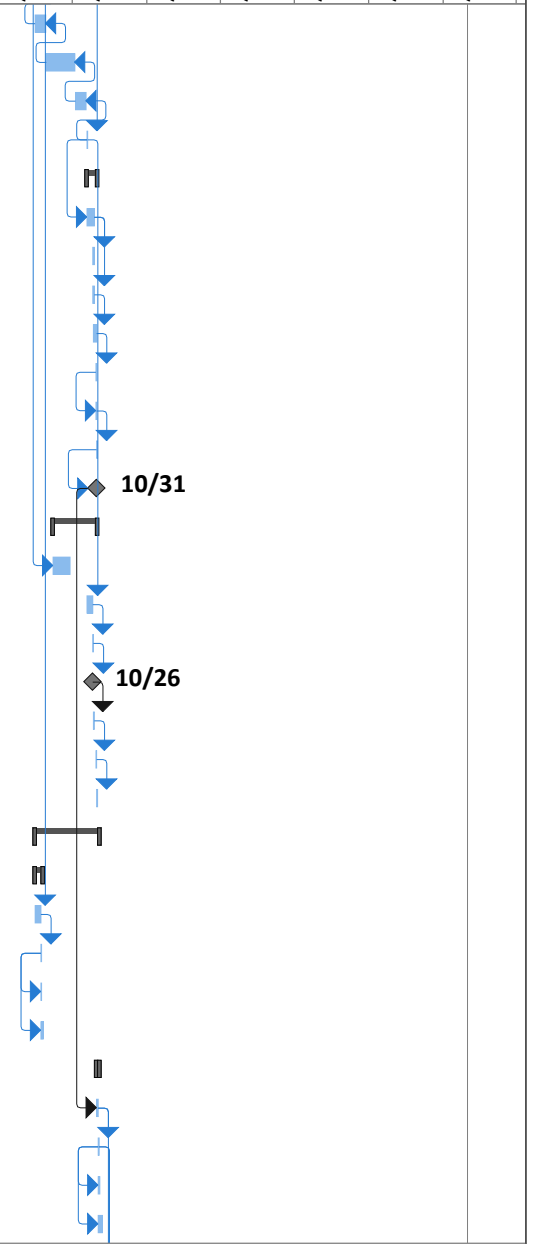
(Installation Name)					PP Package: Initial Outfitting Schedule																		
ID	Task Mode	Task Name	Duration	Start	Finish	2021				2022				2023				2024				2025	
						Qtr 1	Qtr 2	Qtr 3	Qtr 4	Qtr 1	Qtr 2	Qtr 3	Qtr 4	Qtr 1	Qtr 2	Qtr 3	Qtr 4	Qtr 1	Qtr 2	Qtr 3	Qtr 4	Qtr 1	
65		1A - User Move Out/Clear Space	10 days	Thu 11/24/22	Thu 12/8/22																		
66		1B - User Move In	6 days	Fri 12/9/22	Fri 12/16/22																		
67		Move all Reuse and Personnel	3 days	Fri 12/9/22	Tue 12/13/22																		
68		OFB - Phase 1	1 day	Wed 12/14/22	Wed 12/14/22																		
69		Post Move Help Desk	3 days	Wed 12/14/22	Fri 12/16/22																		
70		DRMO & Close-Out Meeting Ph 1	5 days	Wed 12/14/22	Tue 12/20/22																		
71		Warranty Period Begins (1 yr)	270 days	Wed 12/14/22	Tue 12/26/23																		
72		Additional Punch Coverage - Ph 1	65 days	Thu 12/15/22	Wed 3/15/23																		
73		Ph 2 Temp Space Prep	20 days	Wed 12/14/22	Tue 1/10/23																		
74		Construction - Ph 2	123 days	Wed 1/11/23	Fri 6/30/23																		
75		Procurement - Phase 2	10 days	Thu 1/19/23	Thu 2/2/23																		
76		Long Lead Items	2 days	Thu 1/19/23	Fri 1/20/23																		
77		Furniture	10 days	Thu 1/19/23	Thu 2/2/23																		
78		Equipment	10 days	Thu 1/19/23	Thu 2/2/23																		
79		Artwork	7 days	Tue 1/24/23	Thu 2/2/23																		
80		Signage	7 days	Tue 1/24/23	Thu 2/2/23																		
81		Mfg, Shipping & Warehousing	105 days	Fri 2/3/23	Fri 6/30/23																		
82		Manufacturing - Phase 2	43 days	Fri 2/3/23	Wed 4/5/23																		
83		Shipping to Whse - Phase 2	13 days	Thu 4/6/23	Tue 4/25/23																		
84		Warehousing - Consolidation	10 days	Wed 4/26/23	Wed 5/10/23																		
85		Shipping to Intl Whs - Phase 2	25 days	Thu 5/11/23	Thu 6/15/23																		
86		Warehousing - Intl - Phase 2	10 days	Fri 6/16/23	Fri 6/30/23																		
87		BOD - Phase 2	0 days	Mon 7/3/23	Mon 7/3/23																		
88		PP Installation - Phase 2	10 days	Mon 7/3/23	Fri 7/14/23																		
89		Initial Outfitting	7 days	Mon 7/3/23	Tue 7/11/23																		
90		3rd Party Vendor Installs	2 days	Mon 7/10/23	Tue 7/11/23																		
91		Calibration/Testing/Certification	2 days	Tue 7/11/23	Wed 7/12/23																		
92		Training	2 days	Tue 7/11/23	Wed 7/12/23																		
93		Govt Inspection	1 day	Thu 7/13/23	Thu 7/13/23																		
94		Punchlist Work	2 days	Thu 7/13/23	Fri 7/14/23																		
95		Final Inspection & Acceptance	1 day	Fri 7/14/23	Fri 7/14/23																		
96		Aseptic Clean	0 days	Fri 7/14/23	Fri 7/14/23																		



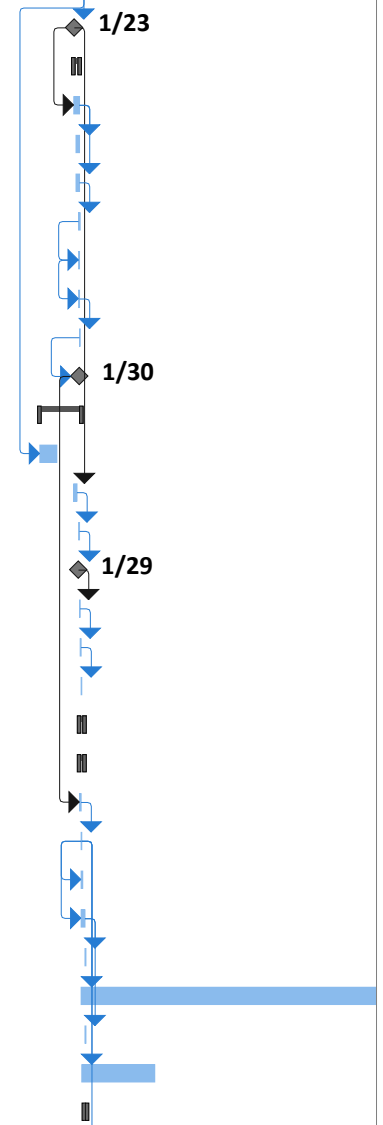
(Installation Name)						PP Package: Initial Outfitting Schedule																
ID	Task Mode	Task Name	Duration	Start	Finish	2021				2022				2023				2024				2025
						Qtr 1	Qtr 2	Qtr 3	Qtr 4	Qtr 1	Qtr 2	Qtr 3	Qtr 4	Qtr 1	Qtr 2	Qtr 3	Qtr 4	Qtr 1	Qtr 2	Qtr 3	Qtr 4	Qtr 1
97		CES Installation - Phase 2	43 days	Mon 5/22/23	Wed 7/19/23																	
98		Pre-Wire CES	15 days	Mon 5/22/23	Fri 6/9/23																	
99		Final Wiring CES	9 days	Mon 7/3/23	Thu 7/13/23																	
100		System Testing	1 day	Fri 7/14/23	Fri 7/14/23																	
101		Govt Inspection	0 days	Fri 7/14/23	Fri 7/14/23																	
102		Punchlist Work	1 day	Mon 7/17/23	Mon 7/17/23																	
103		Final Inspection & Acceptance	1 day	Tue 7/18/23	Tue 7/18/23																	
104		System Training	1 day	Wed 7/19/23	Wed 7/19/23																	
105		Transition Planning	138 days	Wed 1/11/23	Fri 7/21/23																	
106		2A - User Move Out	11 days	Wed 1/11/23	Wed 1/25/23																	
107		Move all Reuse and Personnel	7 days	Wed 1/11/23	Thu 1/19/23																	
108		OFB - Phase 2 Temp Space	1 day	Fri 1/20/23	Fri 1/20/23																	
109		Post Move Help Desk	3 days	Fri 1/20/23	Tue 1/24/23																	
110		DRMO	4 days	Fri 1/20/23	Wed 1/25/23																	
111		2B - User Move In	6 days	Fri 7/14/23	Fri 7/21/23																	
112		Move all Reuse and Personnel	3 days	Fri 7/14/23	Tue 7/18/23																	
113		OFB - Phase 2	1 day	Wed 7/19/23	Wed 7/19/23																	
114		Post Move Help Desk	3 days	Wed 7/19/23	Fri 7/21/23																	
115		DRMO & Close-Out Meeting Ph 2	4 days	Wed 7/19/23	Mon 7/24/23																	
116		Warranty Period Begins (1 yr)	263 days	Wed 7/19/23	Fri 7/19/24																	
117		Additional Punch Coverage - Ph 2	65 days	Thu 7/20/23	Wed 10/18/23																	
118		Ph 3 Temp Space Prep	20 days	Wed 7/19/23	Tue 8/15/23																	
119		Construction - Ph 3A	46 days	Wed 8/16/23	Wed 10/18/23																	
120		Procurement - Phase 3	10 days	Wed 5/10/23	Wed 5/24/23																	
121		Long Lead Items	2 days	Wed 5/10/23	Thu 5/11/23																	
122		Furniture	10 days	Wed 5/10/23	Wed 5/24/23																	
123		Equipment	10 days	Wed 5/10/23	Wed 5/24/23																	
124		Artwork	7 days	Mon 5/15/23	Wed 5/24/23																	
125		Signage	7 days	Mon 5/15/23	Wed 5/24/23																	
126		Mfg, Shipping & Warehousing	104 days	Thu 5/25/23	Wed 10/18/23																	
127		Manufacturing - Phase 3	47 days	Thu 5/25/23	Mon 7/31/23																	
128		Shipping to Whse - Phase 3	10 days	Tue 8/1/23	Tue 8/15/23																	




(Installation Name)				PP Package: Initial Outfitting Schedule																									
ID	Task Mode	Task Name	Duration	Start	Finish	2021				2022				2023				2024				2025							
						Qtr 1	Qtr 2	Qtr 3	Qtr 4	Qtr 1	Qtr 2	Qtr 3	Qtr 4	Qtr 1	Qtr 2	Qtr 3	Qtr 4	Qtr 1	Qtr 2	Qtr 3	Qtr 4	Qtr 1							
129	➔	Warehousing - Consolidation	9 days	Wed 8/16/23	Tue 8/29/23																								
130	➔	Shipping to Intl Whs - Phase 3	25 days	Wed 8/30/23	Wed 10/4/23																								
131	➔	Warehousing - Intl - Phase 3	9 days	Thu 10/5/23	Wed 10/18/23																								
132	➔	BOD - Phase 3A	1 day	Thu 10/19/23	Thu 10/19/23																								
133	➔	PP Installation - Phase 3A	9 days	Thu 10/19/23	Tue 10/31/23																								
134	➔	Initial Outfitting	7 days	Thu 10/19/23	Fri 10/27/23																								
135	➔	3rd Party Vendor Installs	2 days	Thu 10/26/23	Fri 10/27/23																								
136	➔	Calibration/Testing/Certification	2 days	Thu 10/26/23	Fri 10/27/23																								
137	➔	Training	2 days	Fri 10/27/23	Mon 10/30/23																								
138	➔	Govt Inspection	1 day	Mon 10/30/23	Mon 10/30/23																								
139	➔	Punchlist Work	1 day	Mon 10/30/23	Mon 10/30/23																								
140	➔	Final Inspection & Acceptance	1 day	Tue 10/31/23	Tue 10/31/23																								
141	➔	Terminal Clean	0 days	Tue 10/31/23	Tue 10/31/23																								
142	➔	CES Installation - Phase 3A	39 days	Thu 9/7/23	Tue 10/31/23																								
143	➔	Pre-Wire CES	15 days	Thu 9/7/23	Wed 9/27/23																								
144	➔	Final Wiring CES	5 days	Thu 10/19/23	Wed 10/25/23																								
145	➔	System Testing	1 day	Thu 10/26/23	Thu 10/26/23																								
146	➔	Govt Inspection	0 days	Thu 10/26/23	Thu 10/26/23																								
147	➔	Punchlist Work	1 day	Fri 10/27/23	Fri 10/27/23																								
148	➔	Final Inspection & Acceptance	1 day	Mon 10/30/23	Mon 10/30/23																								
149	➔	System Training	1 day	Tue 10/31/23	Tue 10/31/23																								
150	➔	Transition Planning	58 days	Wed 8/16/23	Fri 11/3/23																								
151	➔	3A - User Move Out	8 days	Wed 8/16/23	Fri 8/25/23																								
152	➔	Move all Reuse and Personnel	5 days	Wed 8/16/23	Tue 8/22/23																								
153	➔	OFB - Phase 3A Temp Space	1 day	Wed 8/23/23	Wed 8/23/23																								
154	➔	Post Move Help Desk	1 day	Wed 8/23/23	Wed 8/23/23																								
155	➔	DRMO	3 days	Wed 8/23/23	Fri 8/25/23																								
156	➔	3A - User Move In	4 days	Tue 10/31/23	Fri 11/3/23																								
157	➔	Move all Reuse and Personnel	2 days	Tue 10/31/23	Wed 11/1/23																								
158	➔	OFB - Phase 3A	1 day	Thu 11/2/23	Thu 11/2/23																								
159	➔	Post Move Help Desk	2 days	Thu 11/2/23	Fri 11/3/23																								
160	➔	DRMO & Close-Out Ph 3A	3 days	Thu 11/2/23	Mon 11/6/23																								



(Installation Name)		PP Package: Initial Outfitting Schedule																				
ID	Task Mode	Task Name	Duration	Start	Finish	2021				2022				2023				2024				2025
						Qtr 1	Qtr 2	Qtr 3	Qtr 4	Qtr 1	Qtr 2	Qtr 3	Qtr 4	Qtr 1	Qtr 2	Qtr 3	Qtr 4	Qtr 1	Qtr 2	Qtr 3	Qtr 4	Qtr 1
161		Warranty Period Begins (1 yr)	261 days	Thu 11/2/23	Thu 10/31/24																	
162		Additional Punch Coverage - Ph 3A	66 days	Fri 11/3/23	Fri 2/2/24																	
163		Construction - Ph 3B & C	58 days	Thu 11/2/23	Mon 1/22/24																	
164		BOD - Phases 3B & C	0 days	Tue 1/23/24	Tue 1/23/24																	
165		PP Installation - Phases 3B & C	6 days	Tue 1/23/24	Tue 1/30/24																	
166		Initial Outfitting	5 days	Tue 1/23/24	Mon 1/29/24																	
167		3rd Party Vendor Installs	2 days	Fri 1/26/24	Mon 1/29/24																	
168		Calibration/Testing/Certification	2 days	Fri 1/26/24	Mon 1/29/24																	
169		Training	2 days	Mon 1/29/24	Tue 1/30/24																	
170		Govt Inspection	1 day	Mon 1/29/24	Mon 1/29/24																	
171		Punchlist Work	1 day	Mon 1/29/24	Mon 1/29/24																	
172		Final Inspection & Acceptance	1 day	Tue 1/30/24	Tue 1/30/24																	
173		Terminal Clean	0 days	Tue 1/30/24	Tue 1/30/24																	
174		CES Installation - Phases 3B & C	38 days	Tue 12/12/23	Thu 2/1/24																	
175		Pre-Wire LVS	15 days	Tue 12/12/23	Mon 1/1/24																	
176		Final Wiring LVS	4 days	Tue 1/23/24	Fri 1/26/24																	
177		System Testing	1 day	Mon 1/29/24	Mon 1/29/24																	
178		Govt Inspection	0 days	Mon 1/29/24	Mon 1/29/24																	
179		Punchlist Work	1 day	Tue 1/30/24	Tue 1/30/24																	
180		Final Inspection & Acceptance	1 day	Wed 1/31/24	Wed 1/31/24																	
181		System Training	1 day	Thu 2/1/24	Thu 2/1/24																	
182		Transition Planning	5 days	Tue 1/30/24	Mon 2/5/24																	
183		3B & C - User Move In	5 days	Tue 1/30/24	Mon 2/5/24																	
184		Move all Reuse and Personnel	2 days	Tue 1/30/24	Wed 1/31/24																	
185		OFB - Phases 3B & C	1 day	Thu 2/1/24	Thu 2/1/24																	
186		Post Move Help Desk	2 days	Thu 2/1/24	Fri 2/2/24																	
187		DRMO	3 days	Thu 2/1/24	Mon 2/5/24																	
188		Close-Out Meeting - Phases 3B & C	1 day	Tue 2/6/24	Tue 2/6/24																	
189		Warranty Period Begins (1 yr)	261 days	Thu 2/1/24	Thu 1/30/25																	
190		Ribbon Cutting	1 day	Tue 2/6/24	Tue 2/6/24																	
191		Addl Punch Coverage - Ph 3B & C	64 days	Fri 2/2/24	Wed 5/1/24																	
192		Project Closeout	4 days	Mon 2/5/24	Thu 2/8/24																	



(Installation Name)			PP Package: Initial Outfitting Schedule																			
ID	Task Mode	Task Name	Duration	Start	Finish	2021				2022				2023				2024				2025
						Qtr 1	Qtr 2	Qtr 3	Qtr 4	Qtr 1	Qtr 2	Qtr 3	Qtr 4	Qtr 1	Qtr 2	Qtr 3	Qtr 4	Qtr 1	Qtr 2	Qtr 3	Qtr 4	Qtr 1
193	 →	Turn over of all warranty paperwork and O&M Manuals	1 day	Mon 2/5/24	Mon 2/5/24																	
194	→	Final Sign Offs	1 day	Tue 2/6/24	Tue 2/6/24																	
195	→	Project Closeout Meeting	1 day	Wed 2/7/24	Wed 2/7/24																	
196	→	Project Complete	1 day	Thu 2/8/24	Thu 2/8/24																	