

STANDARD DESIGN

AIR FORCE PERMANENT PARTY ENLISTED DORMITORY



TABLE OF CONTENTS

Chapter 1 Introduction

- 1.1 Standard Design
- 1.2 Air Force Standard Design Policy
 - 1.2.A Required use of Standard Designs
 - 1.2.B Integration with Air Force Corporate and Installation Facility Standards
- 1.3 Applicability
 - 1.3.A. Additions and Alterations

Chapter 2 Facility Design

- 2.1 Facility Description
 - 2.1.A Function
 - 2.1.B Typical Users
 - 2.1.C Related AFMAN 32-1084 Category Code
- 2.2 Criteria
 - 2.2.A Sustainability
 - 2.2.B Security and Antiterrorism
- 2.3 Notional Site
 - 2.3.A Site Location, Orientation and Adjacencies
 - 2.3.B Parking
 - 2.3.C Vehicular and Pedestrian Circulation
 - 2.3.D Notional Site Plan
- 2.4 Building Design
 - 2.4.A General Considerations
 - 2.4.B Building Configuration
 - 2.4.C Interior/Exterior Relationships
 - 2.4.D Functional Area Requirements
 - 2.4.E Circulation concept Diagram Community Space
 - 2.4.F Visual Connection Diagram for Community Space Module
 - 2.4.G Room Data Sheets
 - 2.4.H Interactive Programming Worksheet

CHAPTER 1 INTRODUCTION

1.1. STANDARD DESIGN

Standard Designs provide functional and spatial requirements for specific Air Force facility types and are intended for use in conjunction with DoD Unified Facilities Criteria (UFC), Air Force Corporate Facility Standards, Installation Facility Standards, and other applicable standards.

Standard Designs are living documents that are periodically reviewed, updated, and made available to users by posting on the Whole Building Design Guide. This Standard Design, as well as those for many other Air Force facilities, can be accessed at this web site: <http://wbdg.org/ffc/af-afcec/prototypes-standard-designs>

This Standard Design is effective upon issuance and is distributed only in electronic media.

1.2 AIR FORCE STANDARD DESIGN POLICY

1.2.A. Required use of Standard Designs

The use of Air Force Corporate Facilities Standards (AFCFS), Installation Facility Standards (IFS) and Standard Designs has been codified in the most recent version of AFI 32-1023, *Designing and Constructing Military Construction Projects* (ref (c)). In compliance with the AFI, all facility designs must conform to the standards outlined and specified in the AFCFS, and if there is an applicable Installation Facilities Standards (IFS) document, the project must conform to those standards as well.

This Standard Design was developed in close coordination with the facility's functional users to by determine personnel counts, allowable/authorized space/room sizes, adjacency diagrams between the functional spaces and the overall facility space requirements. It also addresses special requirements unique to this facility type. Use this Standard Design in conjunction with other AF policy and regulations such as, AFI's, and UFC's when programming and designing this facility type.

1.2.B. Integration with Air Force Corporate and Installation Facility Standards

The Air Force Corporate Facilities Standards (AFCFS), is an enterprise-wide program of facility standards establishing an acceptable level of quality and performance for facility design, facility operations and ongoing building maintenance. The AFCFS provides an exciting direction forward; intended to create sustainable installations and cohesive, efficient, High Performance and Sustainable Buildings throughout the Air Force.

Installation Facilities Standards (IFS) are part of the Air Force Corporate Facilities Standards (AFCFS) program to assist bases in implementing facilities standards at the local level. Bases develop and maintain an IFS, which replaces the Architectural Compatibility Plan, as a component plan of the Installation Development Plan (IDP).

Programmers and designers for Permanent Party Enlisted Dormitory must use this Standard Design to ensure the specific functional, spatial, and special requirements are met, meet the local requirements established by the IFS, and the overall Air Force requirements set forth in the AFCFS.

1.3 APPLICABILITY

This Standard Design provides requirements for evaluating, planning, programming, and designing a 144-person Permanent Party Enlisted Dormitory that supports the mission, is appropriately sized, flexible, durable, and life-cycle cost efficient. The information in this Standard Design applies to the design of all new construction projects, to include additions, alterations, and renovation projects worldwide. It also applies to the procurement of Design Build services for the above-noted projects. Alteration and renovation projects should update existing facilities to meet the guidance and criteria within budgetary constraints.

The facility size is dependent on the of persons assigned to the dormitory. This Standard Design is based on 144 persons, which is a typical requirement for many Air Force Permanent Party Enlisted Dormitories. Use the Interactive Programming Worksheet to adjust the overall gross building area based on the number Airmen to be housed.

CHAPTER 2 FACILITY DESIGN

2.1 FACILITY DESCRIPTION

2.1.A. Function

The primary function of the Permanent Party Enlisted Dormitory is to provide a facility that fully supports the mission with a flexible state-of-the-art building. The facility supports 144 single-person Dormitory Rooms within a standalone three-story facility. The facility is comprised of the following modules: First Floor Common Area Module, Second Floor Common Area Module, Third Floor Common Area Module and Dormitory Room Modules. The Modules are further broken down into rooms/spaces as follows (included rooms/spaces are noted below module title):

Area Modules

A – First Floor Common Area Module

Entry Vestibule

Community Activity Space

Passive Activity Space

Kitchen

Office/Storage/Closet

- Unisex Toilet
- Building Utility Rooms (MEP, Communications, etc.)
- Vertical Circulation (Elevator and stairs)
- B – Second Floor Common Area Module
 - Activity Space
 - Fitness Center
 - Building Utility Room (Electrical)
 - Vertical Circulation (Elevator and stairs)
 - Laundry Room
- C – Third Floor Common Area Module
 - Activity Space
 - Theater/Meeting Room
 - Building Utility Room (Electrical)
 - Vertical Circulation (Elevator and stairs)
- D – Dormitory Module
 - Bedroom
 - Entry/Kitchenette/Closet
 - Bathroom
 - Mechanical Chase

2.1.B. Typical Users

This Dormitory is used by Air Force Permanent Party Enlisted Personnel.

Hours of operation for this facility type are 24-7 and this Standard Design is for 144 Dormitory Rooms.

2.1.C. Related AFMAN 32-1084 Category Code

The related AFMAN 32-1084 Category Codes are as follows: This facility would be governed by Chapter 7 Housing and Community, Category Group 72 Unaccompanied Personnel Housing (UPH).

2.1.D. AFCFS

Consult the Air Force Corporate Facilities Standards (AFCFS) to determine quality standards for this facility group. This Standard Design is considered a Group 2 Dormitory hierarchy.

2.2 CRITERIA

APPLICABLE UNIFIED FACILITY CRITERIA

Comply with UFC 1-200-01, DoD Building Code (General Building Requirements). UFC 1-200-01 provides applicability of model building codes and government unique criteria for typical design disciplines and building systems, as well as for accessibility, antiterrorism, security, high performance and sustainability requirements, and safety. Use this Standard Design in addition to UFC 1-200-01 and the UFCs and government criteria referenced therein. UFC 1-200-01 references other “Core UFCs” that are applicable to this Standard Design as well as most all DoD facilities.

Meet the requirements of UFC 1-200-02 and achieve green building certification in accordance with the current AF Sustainable Design and Development memo. Most, but not necessarily all applicable Unified Facility Criteria documents are listed below:

UFC 1-200-01	DoD Building Code (General Building Requirements)
UFC 1-200-02	High Performance and Sustainability Building Requirements
UFC 1-300-07A	Design Build Technical Requirements
UFC 3-101-01	Architecture
UFC 3-110-03	Roofing
UFC 3-120-01	Design: Sign Standards
UFC 3-120-10	Interior Design
UFC 3-190-06	Protective Coatings and Paints
UFC 3-201-01	Civil Engineering
UFC 3-201-02	Landscape Architecture
UFC 3-210-10	Low Impact Development
UFC 3-220-01	Geotechnical Engineering
UFC 3-230-01	Water Storage and Distribution
UFC 3-240-01	Wastewater Collection
UFC 3-250-01	Pavement Design for Roads and Parking Areas
UFC 3-250-03	Standard Practice Manual for Flexible Pavements

UFC 3-250-04	Standard Practice for Concrete Pavements
UFC 3-301-01	Design: Structural Engineering
UFC 3-400-02	Design: Engineering Weather Data
UFC 3-401-01	Mechanical Engineering
UFC 3-410-01	Heating, Ventilation, and Air Conditioning Systems
UFC 3-410-02	Lonworks Direct Digital Control for HVAC and Other Local Building Systems
UFC 3-420-01	Plumbing Systems
UFC 3-450-01	Noise and Vibration Control
UFC 3-501-01	Electrical Engineering
UFC 3-520-01	Interior Electrical Systems,
UFC 3-530-01	Design: Interior and Exterior Lighting and Controls,
UFC 3-550-01	Exterior Electrical Power Distribution
UFC 3-570-01	Cathodic Protection
UFC 3-575-01	Lightning and Static Electricity Protection Systems
UFC 3-580-01	Telecommunications Building Cabling Systems Planning and Design
UFC 3-600-01	Fire Protection Engineering for Facilities
UFC 4-010-01	DoD Minimum Antiterrorism Standards for Buildings
UFC 4-020-01	Security Engineering Facilities Planning Manual
UFC 4-021-01	Design and O&M: Mass Notification Systems
UFC 4-010-06	Cybersecurity of Facility-Related Control Systems

2.2.A. Sustainability

Comply with the Federal sustainability requirements as detailed in UFC 1-200-02, High Performance and Sustainable Building Requirements. Determine third-party certification requirements based on Table 1-1 of UFC 1-200-02 and current AF guidance at <https://www.wbdg.org/ffc/af-afcec>.

2.2.B. Security and Antiterrorism

The facility must meet the requirements UFC 4-020-01 Security Engineering Facilities Planning Manual, UFC 04-010-01 DoD Minimum Antiterrorism Standards for Buildings.

2.3 NOTIONAL SITE

2.3.A. Site Location, Orientation and Adjacencies

The notional site plan diagram demonstrates key site development criteria. It is not a site-specific solution. The information represents the land requirements to construct this facility and includes associated AT standoff and parking. Additional land may be needed to comply with the stormwater management requirements of UFC 3-210-10 Low Impact Development. Utilization of existing or shared parking is allowable and may reduce the total acreage required for the facility. Adapt the requirements to the specific site and location and comply with the applicable Installation Development Plan (IDP) and Area Development Plan (ADP) for facility siting.

Several factors determine the most appropriate and cost-effective location for a facility. The availability and capacity of required utilities and the mass/scale of the facility relative to adjacent structures and noise issues must be analyzed.

Emphasis must be placed on operation, function, and safety when siting the facility. The preferred location of the facility is determined by the base master plan and is generally located in a specific geographic area or “zone” of the base.

The approximate project area required for the facility is 7.00 acres, which includes antiterrorism/force protection standoff and parking.

2.3.B. Parking

Parking must be provided to accommodate 70% of the design capacity of the facility.

2.3.C. Vehicular and Pedestrian Circulation

Convenient and safe vehicular access and circulation must be provided for personal vehicles and essential services, including operations, maintenance, deliveries, dumpster/recycling collection, and emergency services.

Locate sidewalk networks to provide convenient and safe pedestrian circulation from existing circulation elements of the project site to the new parking areas and doors of the facility. Sidewalk width must accommodate maintenance and emergency services requirements.

2.3.D. Notional Site Plan



NOTES

- ① PRIMARY BUILDING ENTRY
- ② PARKING LOT - 94 SPACES + 6 ACCESSIBLE SPACES
- ③ SERVICE DRIVE
- ④ DUMPSTER/ SCREENING ENCLOSURE

LEGEND

- ← - - → ACCESS STREET
- - - ○ CONTROLLED VEHICLE ACCESS

2.4 BUILDING DESIGN

2.4.A. General Considerations

General considerations of the facility design are centered on:

- The Dormitory Modules and Common Area Modules.
- The functional relationships between the modules as well as between the spaces within the modules
- The general personnel flow requirements within the facility and Common Area such that there is interaction among the enlisted personnel occupying the facility.

Residents and visitors enter the facility through the First Floor Common Area Module and as well as through First Floor Dormitory Module corridor ends.

The Building Support areas within the First Floor Common Area Module need exterior access.

Other general considerations include:

- The size of the Permanent Party Enlisted Dormitory shall be affected by the number of Dormitory Rooms.

2.4.B. Building Configuration

The building should be configured for future expansion or reconfiguration. The general size of the building is based on the number of dormitory rooms required. The general variation of configurations of the dormitory is a T-shape, L-shape and H-shape. The size of the facility is affected by the number of Dormitory Modules.

2.4.C. Interior/Exterior Relationships

The dormitory will have access to POV and Visitor parking as well as outdoor areas around the dormitory wings.

2.4.D. Functional Area Requirements

Facility Modules Adjacency Diagrams & Conceptual Axonometric Layout(s)

The composite diagram(s) represent ways to conceptually assemble the functional areas (modules) into a cohesive whole. Individual modules are represented by different colors.

Spaces and rooms that are integrally related with a specific functional connection or operational flow are grouped into a module. Modules and the associated room data sheets identify specific criteria and additional detail for each functional area of the facility as outlined in the Interactive Programming Sheet located at the end of the document.

The modules are a grouping of functional spaces and represent “Lego blocks” to be used in a “kit-of-parts” design approach. Use the fixed modules as pre-assembled

pieces of the facility “puzzle”. Assemble them to comply with the required adjacencies indicated in the diagrams and module plans.

Modules must be used as shown in this Standard Design to the greatest extent possible and must not be deconstructed or altered except as indicated herein. The intent of the Standard Design criteria is to avoid manipulation of the composition, functional relationships, adjacencies, and module sizes. Modules contain fixed attributes and must not be changed arbitrarily. Modules may be rotated, flipped, and/or mirrored to accommodate an overall composition or site issue, but this must not be done arbitrarily and should occur only when necessary. One exception is the Primary Building Entry (see 2.3.D Notional Site Plan) to Common Area Module. The Main Entry should be customized based on solar orientation, local architectural context, and other site-specific issues.

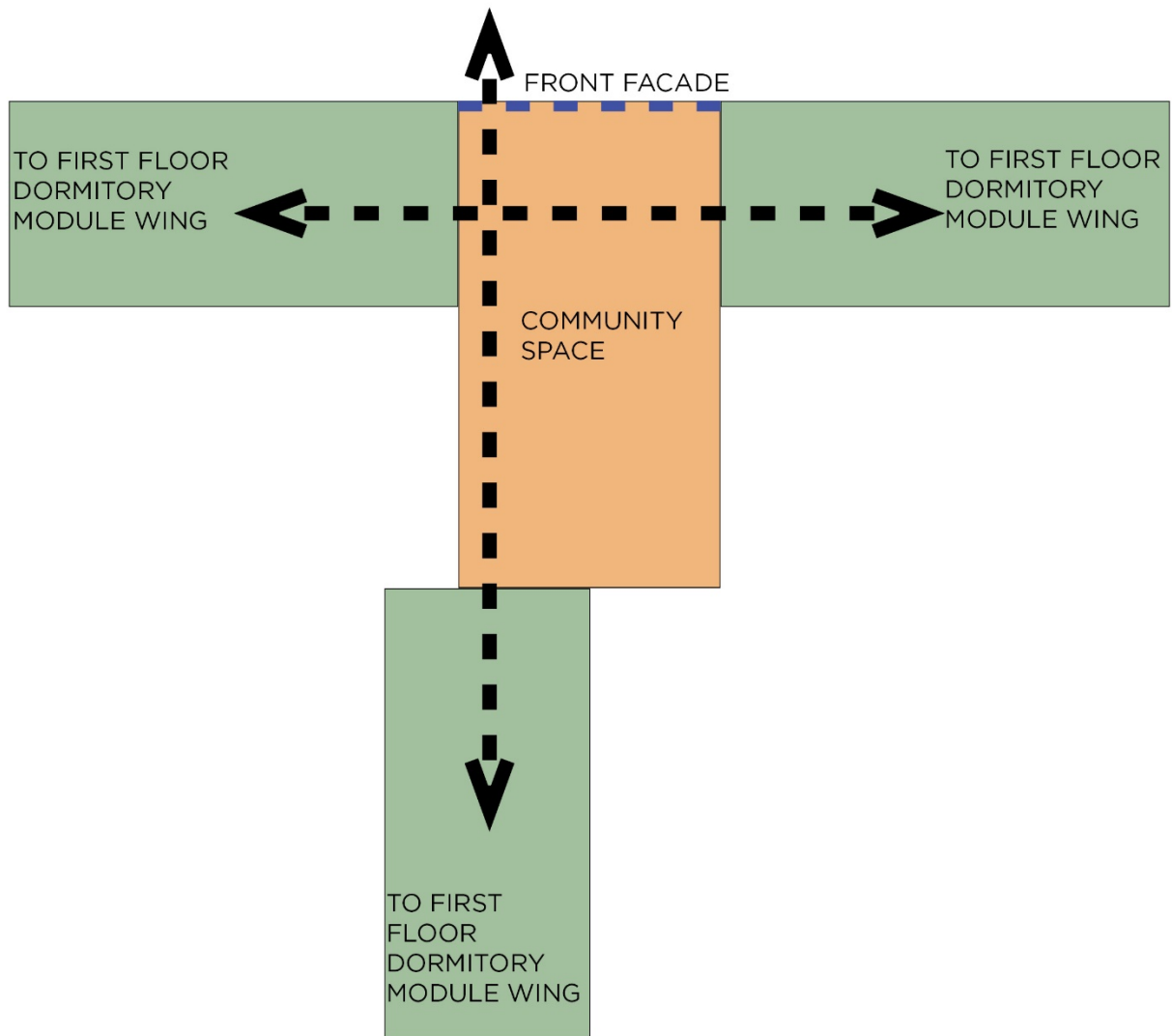
Some modules are linked to space requirements that increase or decrease in size based on the number of dormitory rooms. In these cases, increase or decrease the size of the Common Area Modules to match the revised scope calculation. This may sometimes require minor adjustments in other adjacent modules so that they properly fit together to create a constructible facility floor plan. Spaces must comply with any critical dimensions indicated on module plans. Manipulate as few modules as possible to create a constructible facility. The resulting composite plan must respect the established modules adjacencies and must not exceed the authorized project scope.

Functional Adjacency Diagram

The following Functional Adjacency Diagrams form the basis of design for the Permanent Party Enlisted Dormitory Standard Design. The Standard Design is based on a three-story 144-person dormitory. The facility is programmed around the Dormitory Modules which are in wings branching off the centrally located Commons Area Modules.

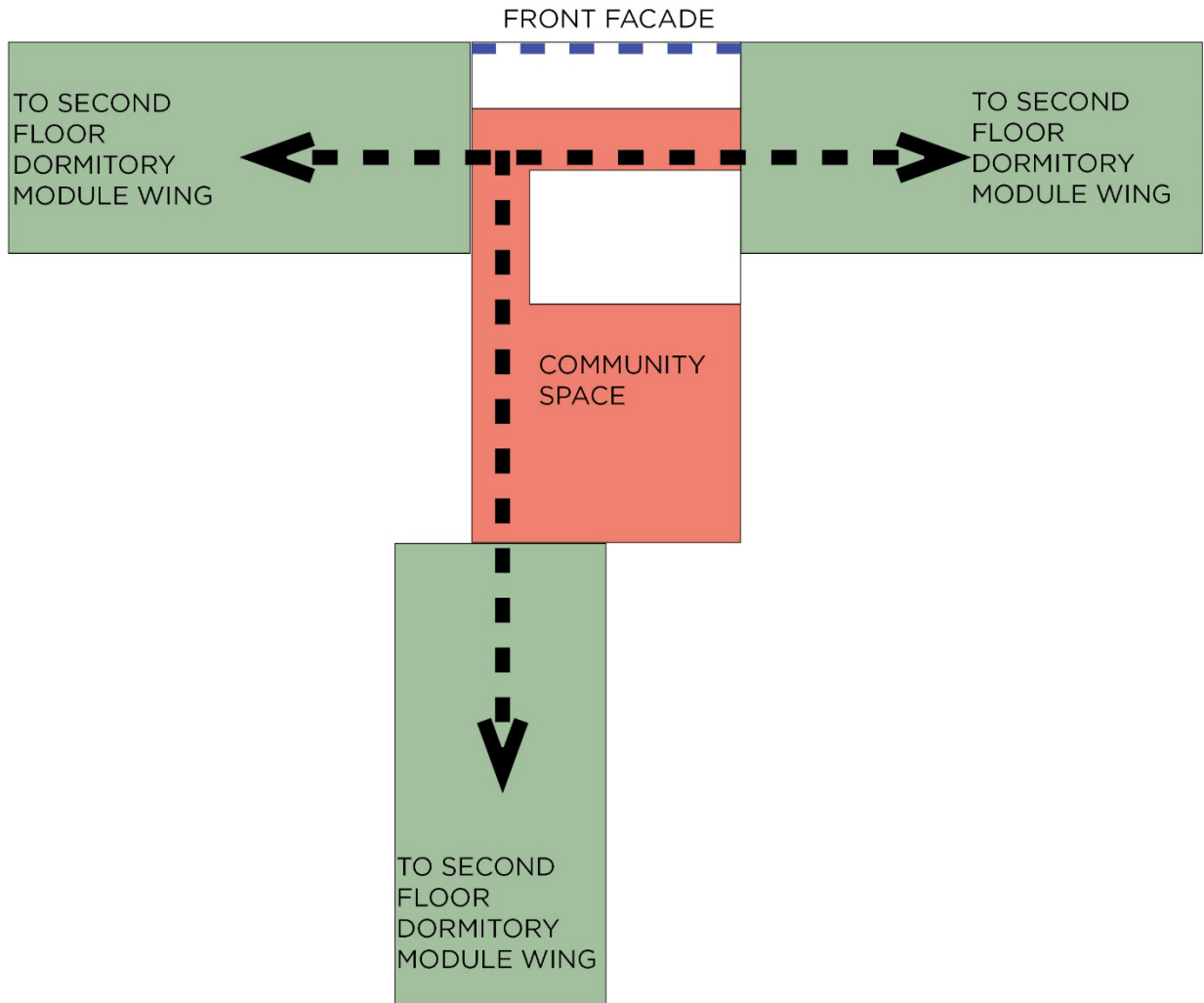
2.4.E. Circulation Concept Diagram Community Space

The Circulation Concept Diagram shows the concept behind the facility composition. The circulation pattern is meant to be along the arrow axis at the edges of the Community Space to maximize functionality of the open space and maximize circulation exposure to the open space. The Front Façade of the facility is meant to be customized per project according to site conditions, local architectural context, solar orientation, or Installation specific missions.



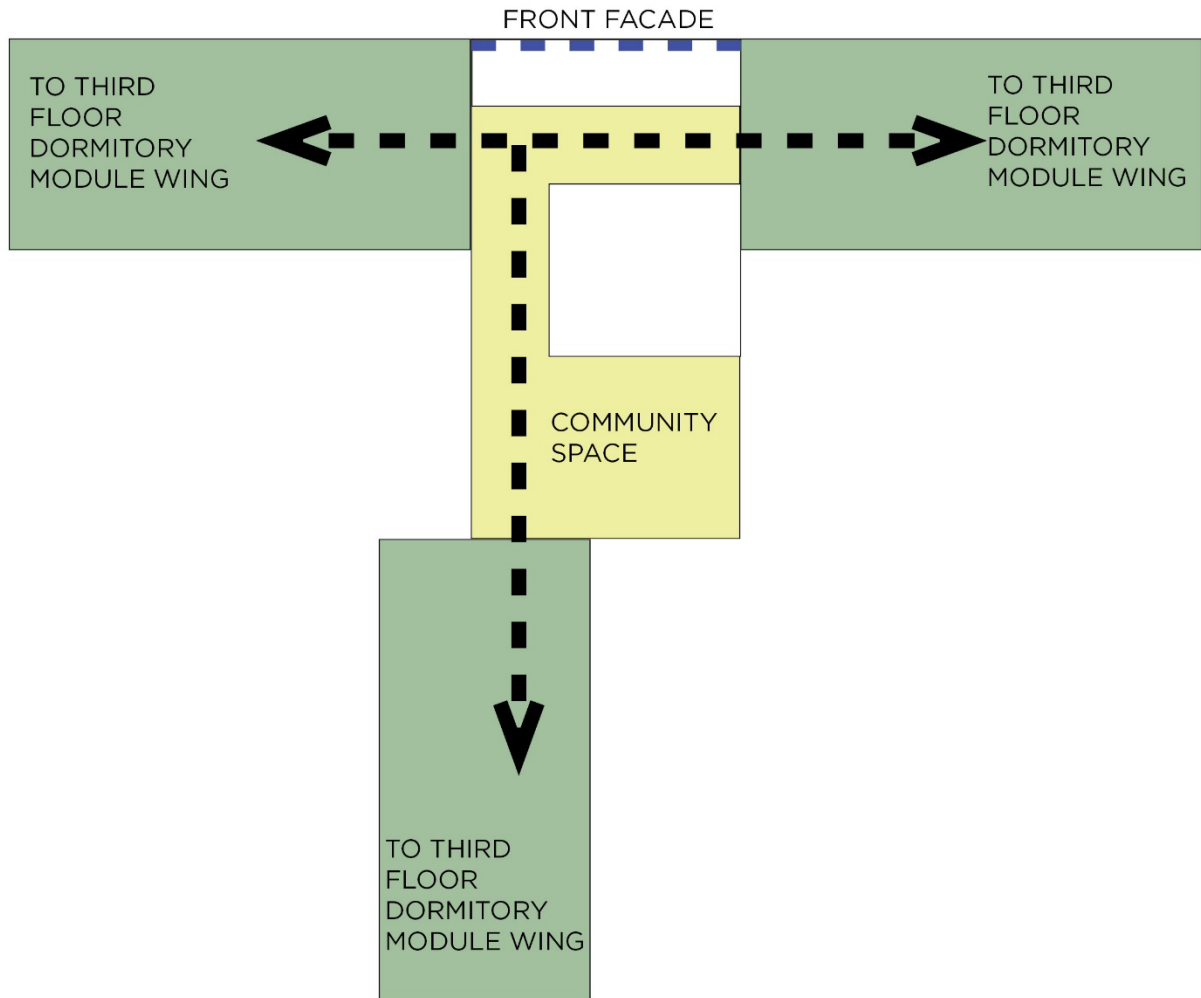
CIRCULATION DIAGRAM FIRST FLOOR PLAN
NO SCALE





CIRCULATION DIAGRAM SECOND FLOOR PLAN
NO SCALE



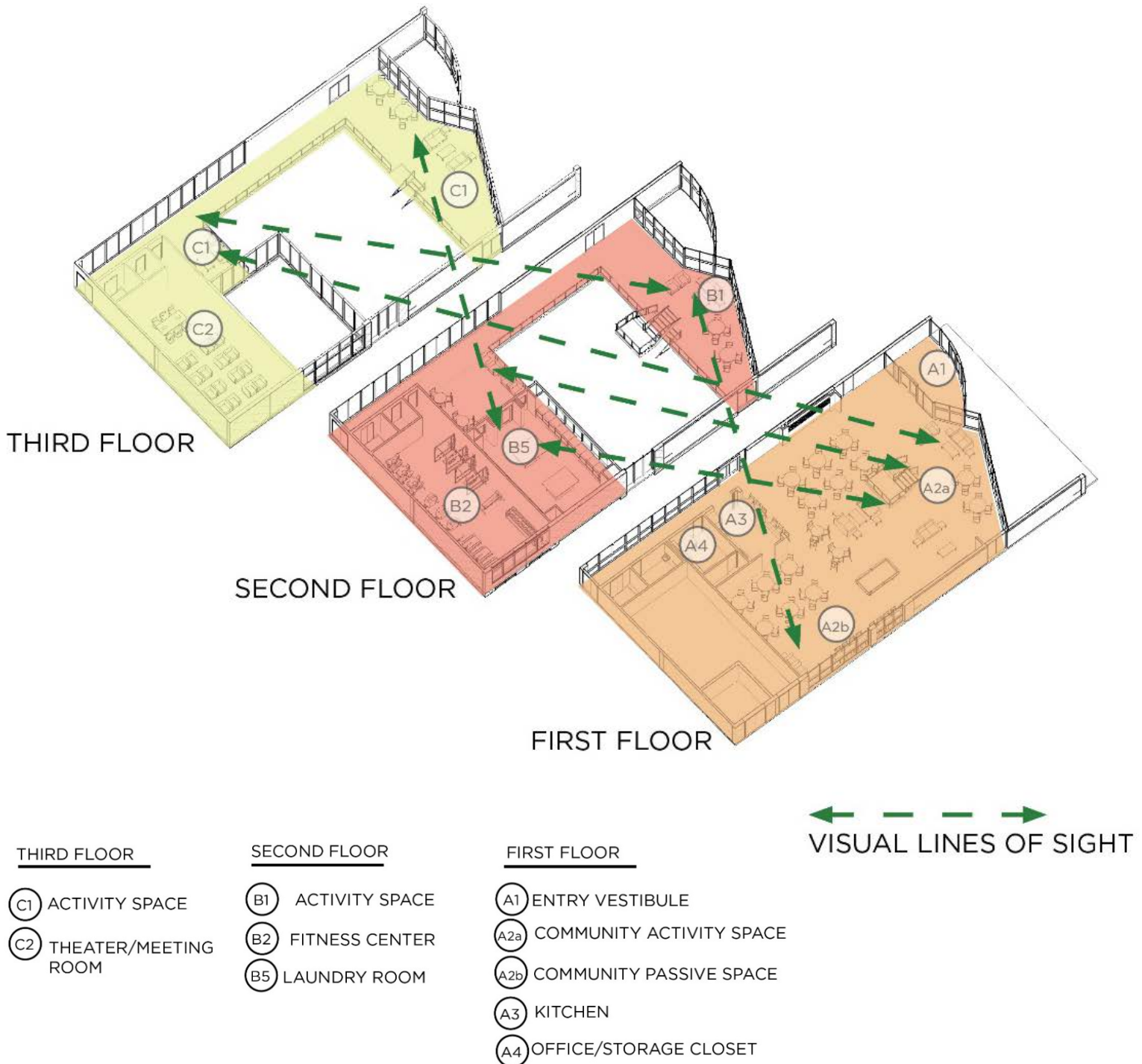


CIRCULATION DIAGRAM THIRD FLOOR PLAN
NO SCALE



2.4.F. Visual Connection Diagram for Community Space Module

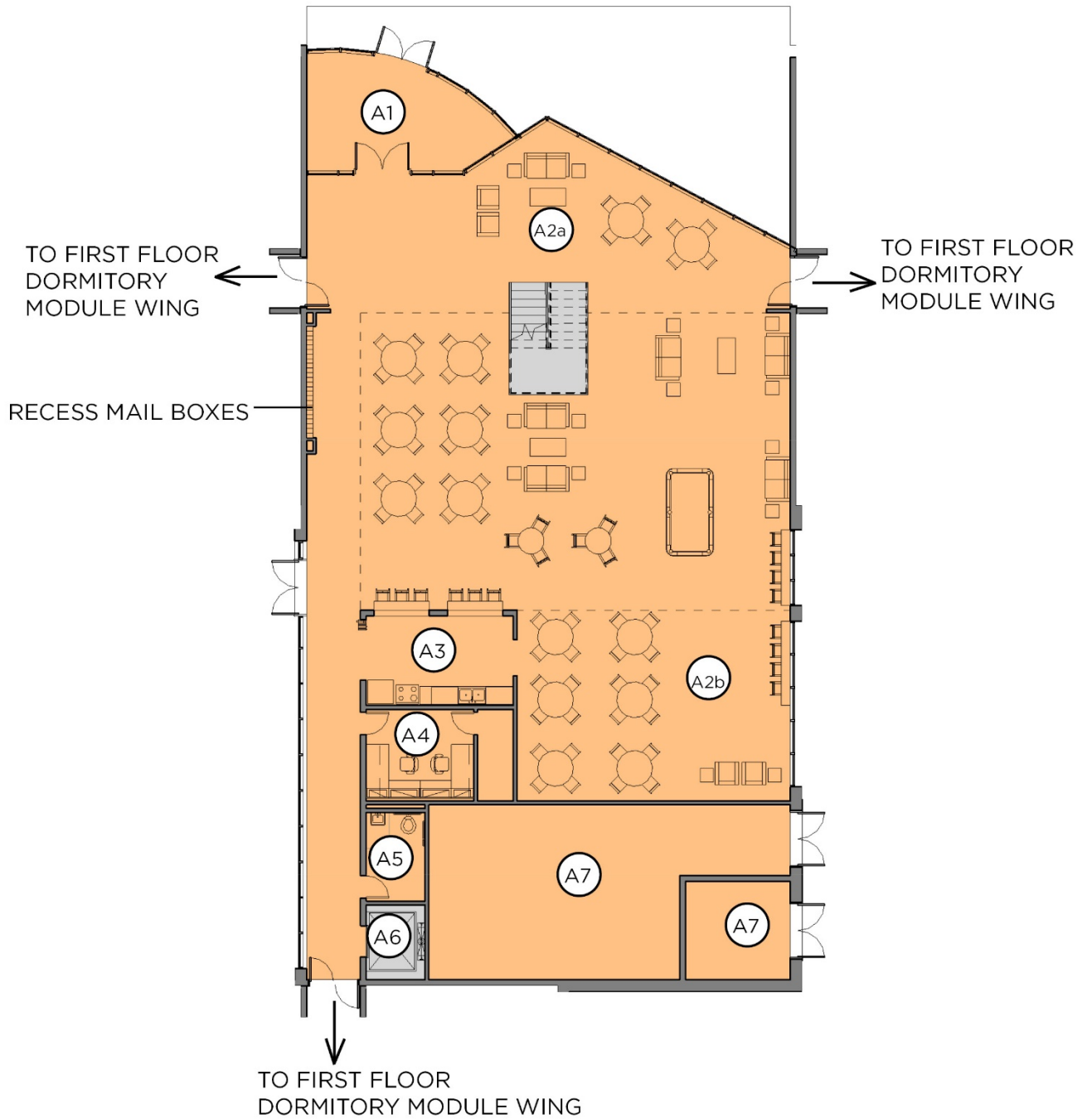
The Visual Connection Diagram for Community Space Module shows the concept behind the hierarchy of spaces within the Community Space. The intention is to increase dynamism in the space via visual connection between active areas. That is, users of the Laundry Room can see the users of the common space and vice versa. The general principle is to create clear visual connections between the main entry, the Fitness Center, the Laundry Room, and the Community Spaces.



MODULE A – First Floor Common Area Module
Module Net Area: 5125 sq.ft. Function and Adjacency

Module A consists of the Entry Vestibule, Activity Spaces, Kitchen, Office/ Storage Closet, Uni-Sex Toilet, Building Utility Rooms (MPE) and Vertical Circulation (Elevator and Stairs). This Module is connected to the First Floor Dormitory Module.

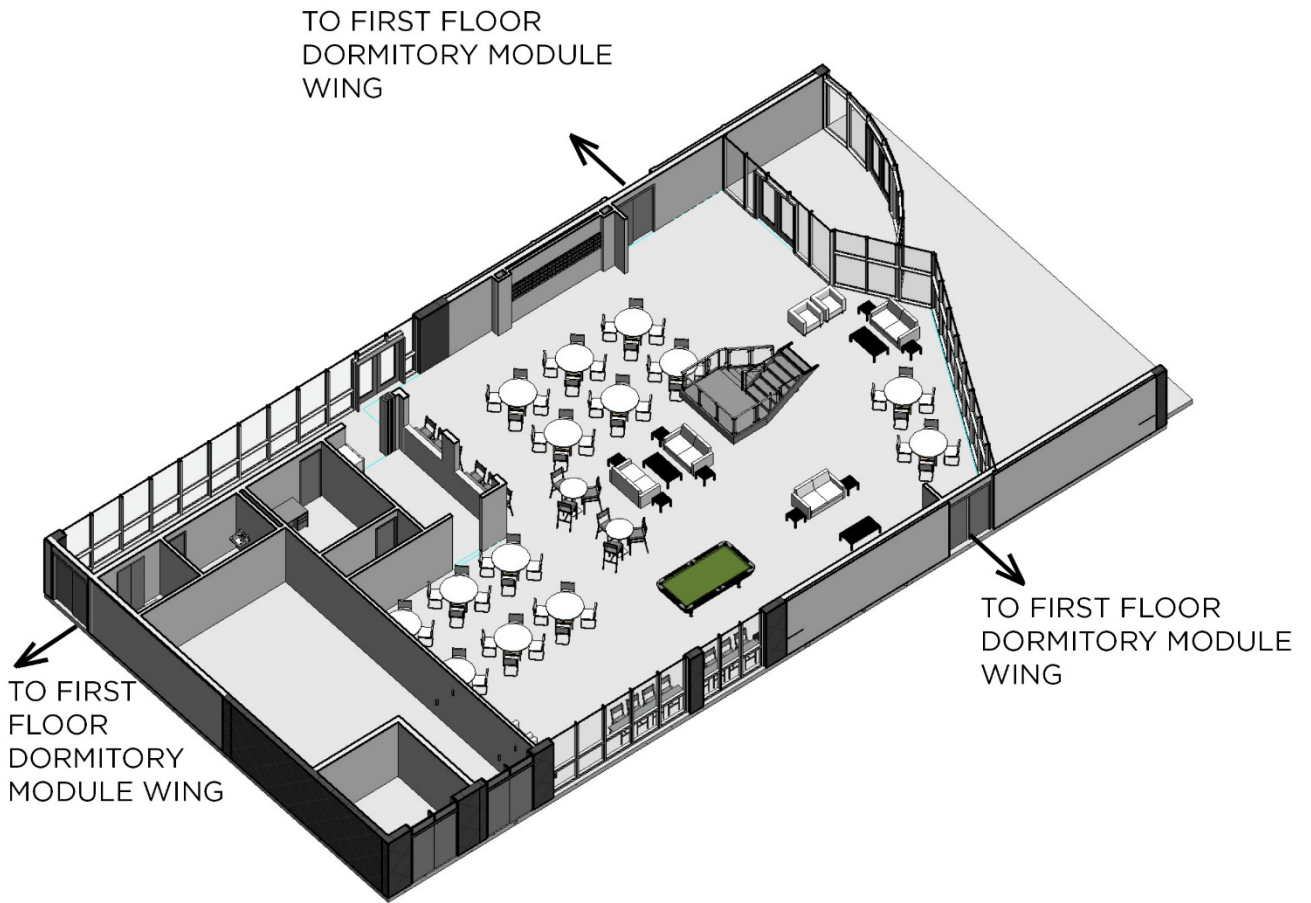
The Entry Vestibule functionality includes creating making the facility distinct by relating to local architecture, orienting to local site conditions including solar orientation. The Module A Entry Vestibule along with exterior curtain wall configuration shown on plan is conceptual in nature.



FIRST FLOOR COMMON AREA MODULE PLAN

NO SCALE

- | | |
|--------------------------------|--|
| (A1) ENTRY VESTIBULE | (A4) OFFICE/STORAGE CLOSET |
| (A2a) COMMUNITY ACTIVITY SPACE | (A5) UNI-SEX TOILET |
| (A2b) COMMUNITY PASSIVE SPACE | (A6) VERTICAL CIRCULATION (ELEVATOR/STAIRS) |
| (A3) KITCHEN | (A7) BUILDING UTILITY ROOM (MEP, COMM, ETC.) |

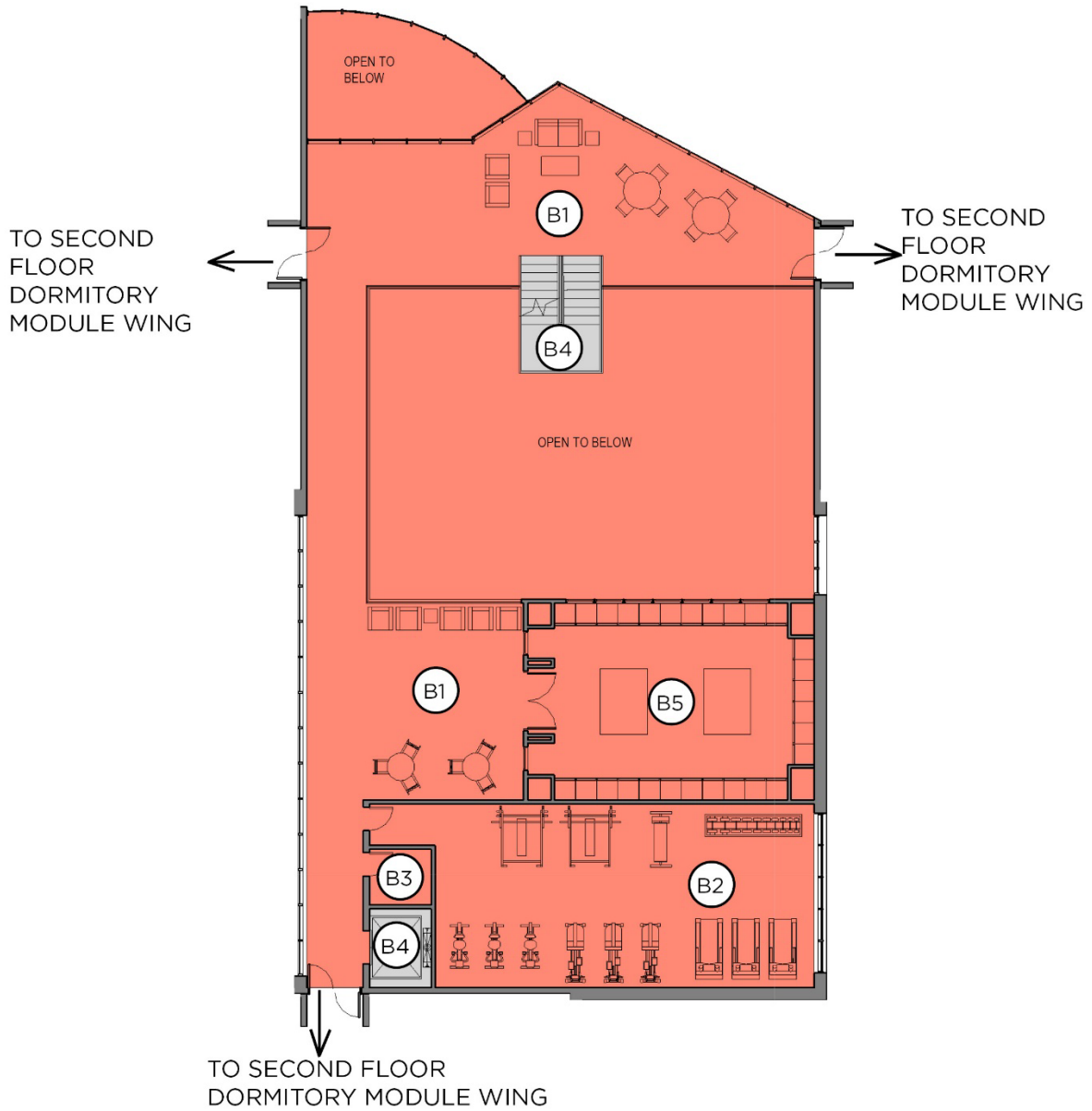


FIRST FLOOR COMMON AREA AXONOMETRIC VIEW
NO SCALE

MODULE B – Second Floor Common Area Module
Module Net Area: 2567 sq.ft

Function and Adjacency

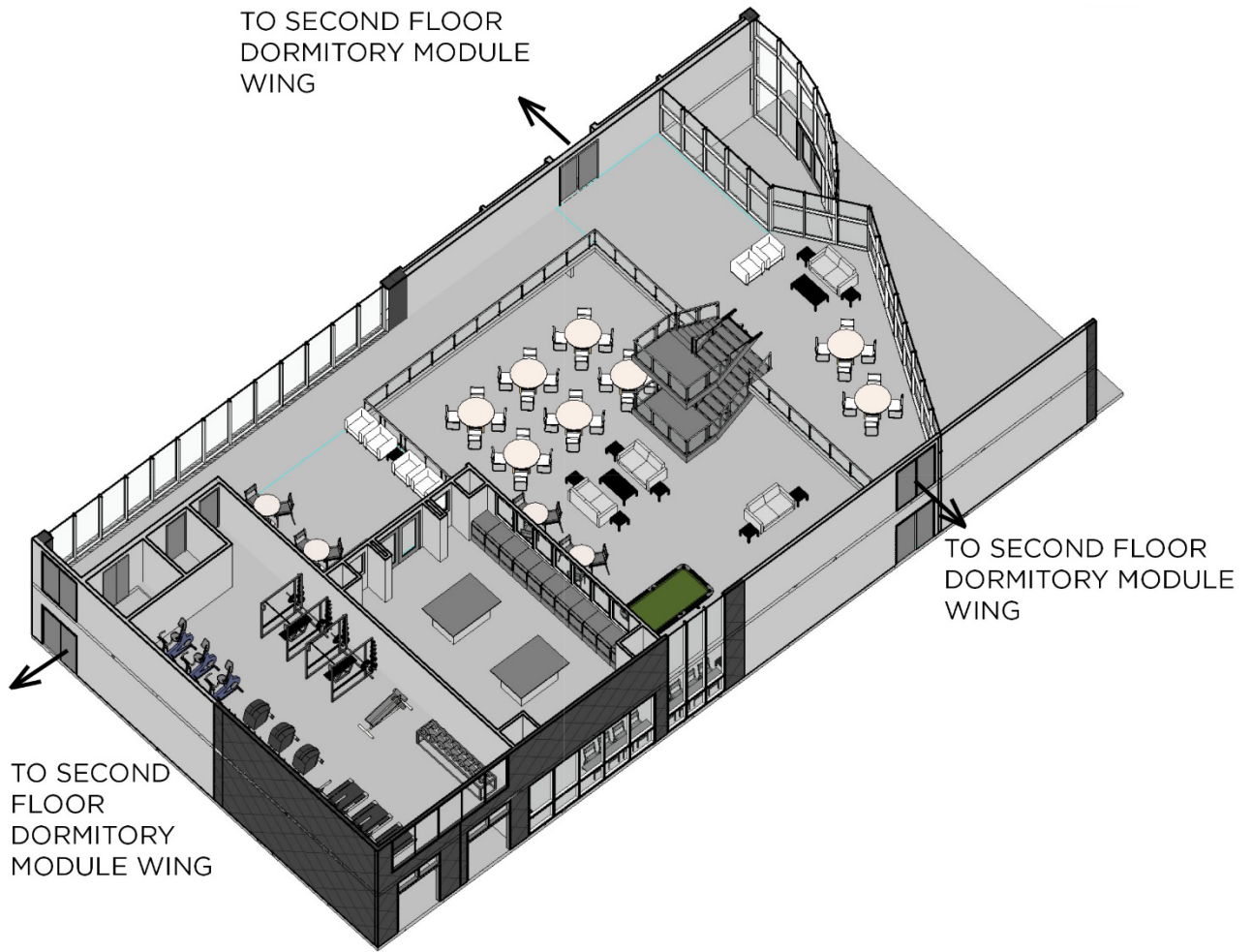
Module B consists of Activity Spaces, Fitness Center, Laundry Room, Building Utility Room (Electrical), and Vertical Circulation (Elevator and Stairs). This Module is connected to the Second Floor Dormitory Module wings.



SECOND FLOOR COMMON AREA MODULE PLAN

NO SCALE

- (B1) ACTIVITY SPACE
- (B2) FITNESS CENTER
- (B3) BUILDING UTILITY ROOM (ELECTRICAL)
- (B4) VERTICAL CIRCULATION (ELEVATOR/STAIRS)
- (B5) LAUNDRY ROOM

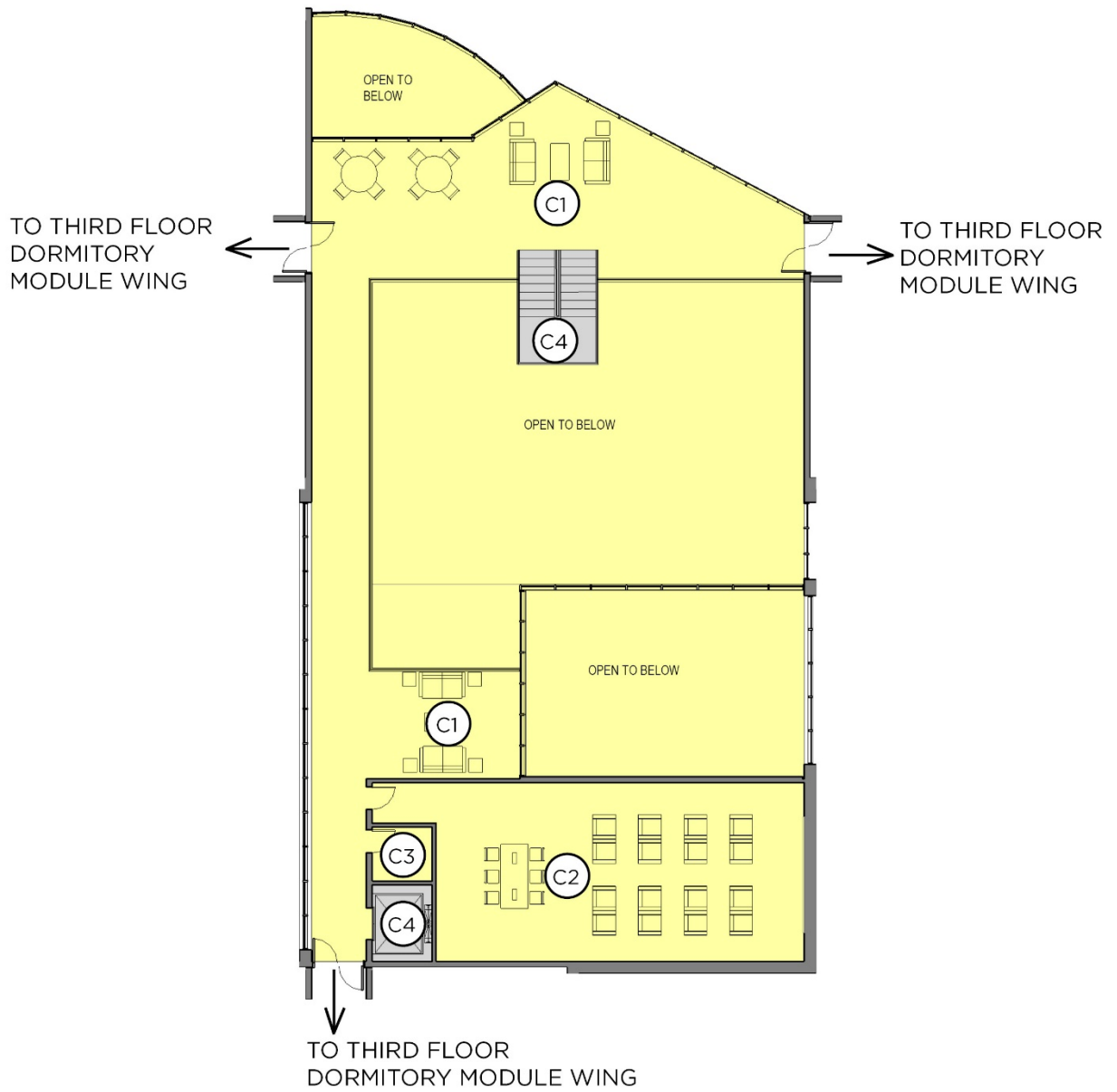


SECOND FLOOR COMMON AREA MODULE AXONOMETRIC VIEW
NO SCALE

MODULE C – Third Floor Commons Area Module
Module Net Area: 2424 sq.ft

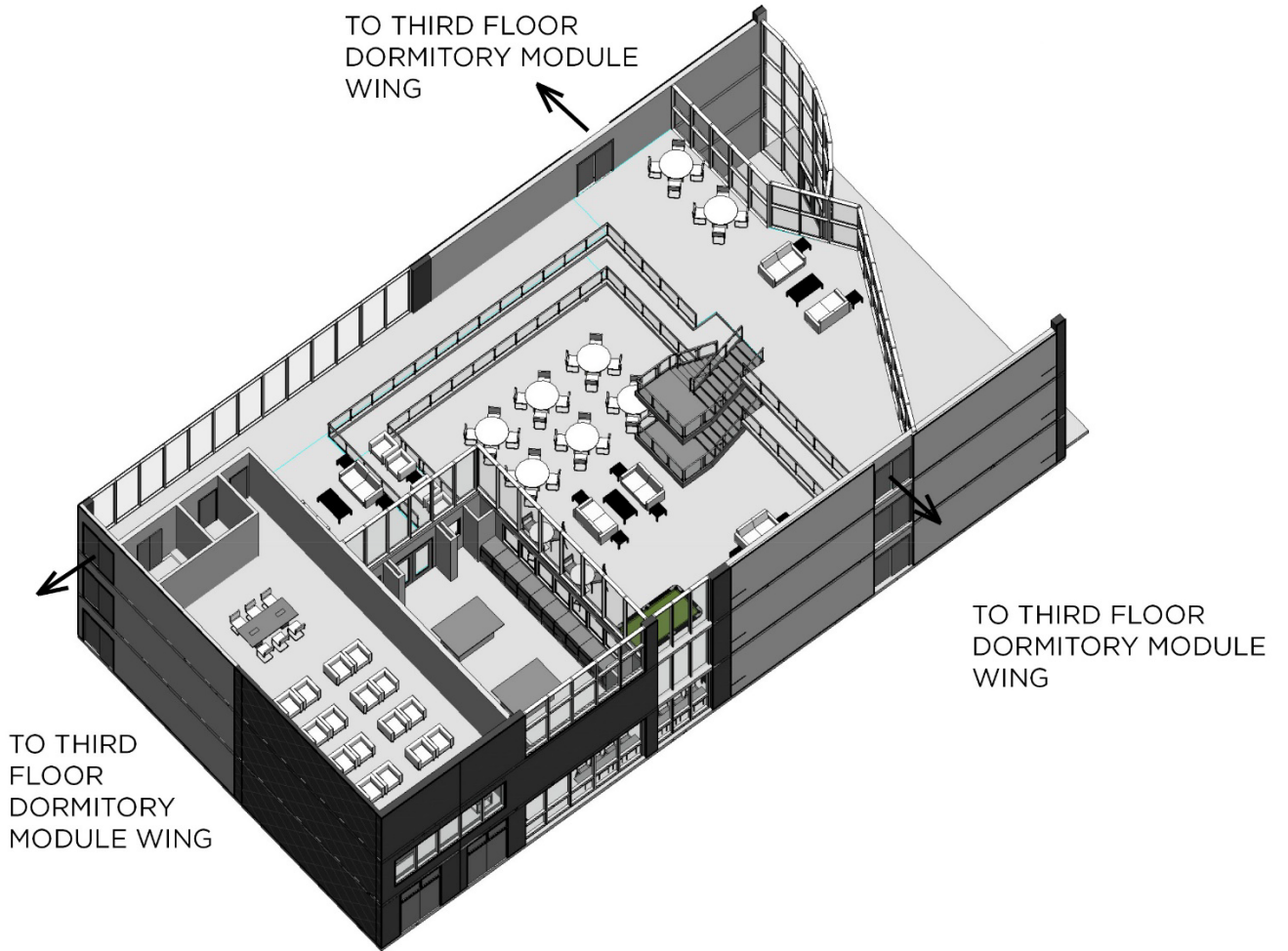
Function and Adjacency

Module C consists of Activity Spaces, Theater/Meeting Room, Building Utility Room (Electrical), and Vertical Circulation (Elevator and Stairs). This Module is connected to the Third Floor Dormitory Module wings.



THIRD FLOOR COMMON AREA MODULE PLAN
NO SCALE

- (C1) ACTIVITY SPACE
- (C2) THEATER/MEETING ROOM
- (C3) BUILDING UTILITY ROOM (ELECTRICAL)
- (C4) VERTICAL CIRCULATION (ELEVATOR/STAIRS)



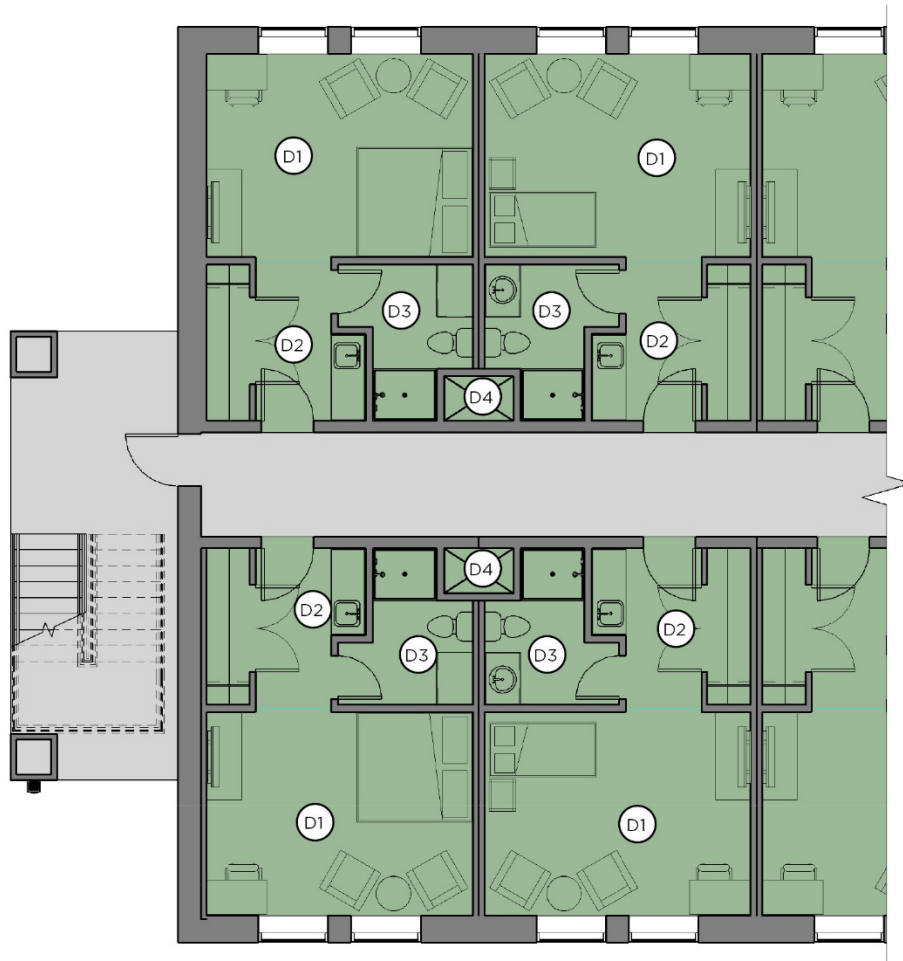
THIRD FLOOR COMMON AREA MODULE AXONOMETRIC VIEW
NO SCALE

MODULE D – Dormitory Module

Module Net Area: 704 sq. ft. total or 352 sq. ft. per dormitory room

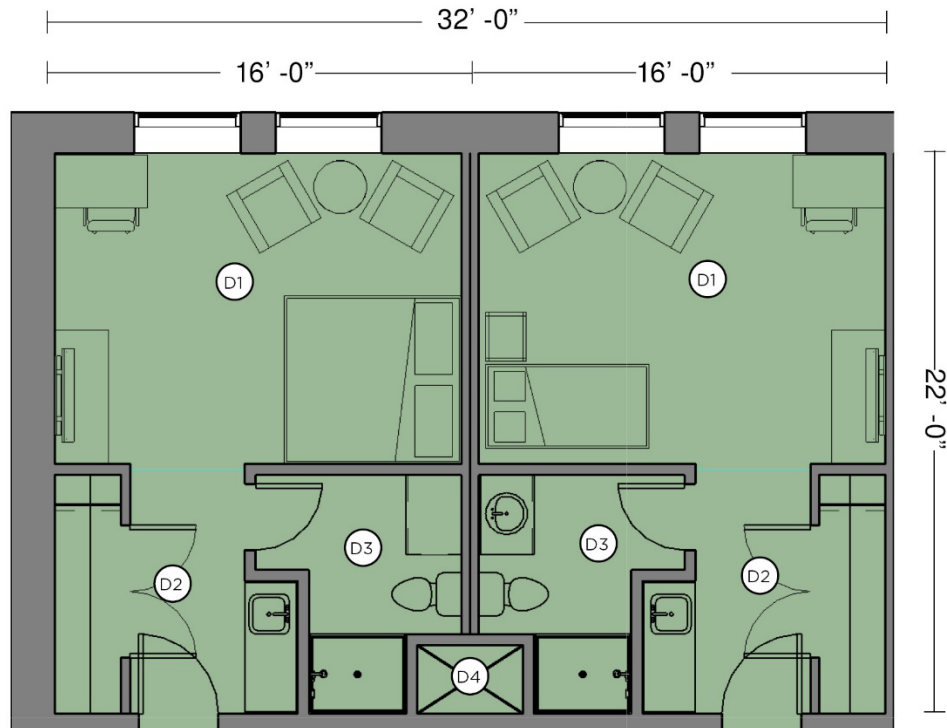
Function and Adjacency

Module D consists of the two Single-Person Dormitory Rooms. The Modules are attached to a central double-loaded corridor which forms the Dormitory wings of the facility. The Dormitory Rooms consist of a Bedroom area, Entry/Kitchenette/Closet and Bathroom. The Dormitory wings connect to the centrally located Common Area Modules. Each Dormitory wing will have a stair at the end of the double-loaded corridor for egress. Dormitory wing separated from Common Areas with a pair of opposite swinging fire rated doors. The Dormitory Module has a shared vertical Mechanical Chase.



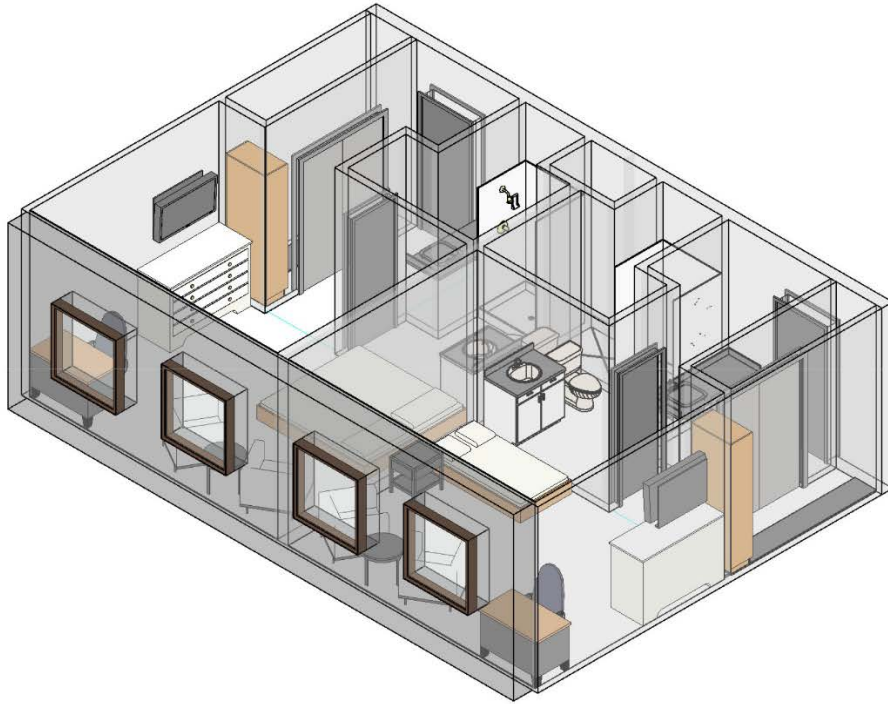
PARTIAL DORMITORY WING MODULES PLAN
NO SCALE

- (D1) BEDROOM
- (D2) ENTRY/KITCHENETTE/CLOSET
- (D3) BATHROOM
- (D4) MECHANICAL CHASE



ENLARGED DORMITORY WING MODULES PLAN
NO SCALE

- (D1) BEDROOM
- (D2) ENTRY/KITCHENETTE/CLOSET
- (D3) BATHROOM
- (D4) MECHANICAL CHASE



TYPICAL DORMITORY MODULE AXONOMETRIC VIEW
NO SCALE

2.4.G. Room Data Sheets

Specific requirements for each room, space, or area are provided on room data sheets that correspond to their respective color-coded Modules, basis of design Functional Adjacency Diagram as well as the Interactive Programming Worksheet. Information contained on the data sheets defines the functional and physical requirements for each of the spaces within the facility type and are generally minimum requirements.

MODULE A – FIRST FLOOR COMMON AREA - ENTRY VESTIBULE		
INDEX		A1
Description/Usage		Main entrance vestibule.
Ceiling Height		30'-0" minimum
Windows		Curtain wall, insulated meeting UFC 4-010-01
Doors	Type	Aluminum storefront entry doors, pair 3'-7', wide style
	Security/ Hardware	Keyed lock set
	View Panels/ Kick Plates	Full glass
Finishes	Walls	Gypsum board – painted or exposed masonry or curtain wall
	Floor	Ceramic tile, quartz epoxy, finished concrete, or continuous walk-off matt
	Base	Tile, epoxy or resilient
	Ceiling	Gypsum board –painted, Acoustical Ceiling Tile or exposed structure - painted
Plumbing		N/A
HVAC		Heated and air conditioned
Fire Protection / Life Safety		Wet pipe sprinkler system
Power		Per UFC 3-520-01
Lighting		Per UFC 3-530-01
Communication	Tele.	N/A
	Data	N/A
	CCTV	N/A
	CATV	N/A
	Security	N/A
Acoustical		Per UFC 3-450-01 for noise control
Furnishings / Equipment / Casework		N/A
Special Requirements		ABA compliant door opening system

MODULE A – FIRST FLOOR COMMON AREA – COMMUNITY ACTIVITY SPACE		
INDEX		A2a
Description/Usage		This is an open activity area for enlisted personnel, includes siting areas, gaming areas, and dining areas.
Ceiling Height		Varies from 30'-0"
Windows		Curtain wall, insulated meeting UFC 4-010-01
Doors	Type	Aluminum storefront entry doors, pair 3'-7', wide style
	Security/ Hardware	Keyed lock set
	View Panels/ Kick Plates	Full glass
Finishes	Walls	Gypsum board – painted or exposed masonry
	Floor	Porcelain tile, quartz epoxy, finished concrete
	Base	Tile, epoxy or resilient
	Ceiling	Gypsum board –painted, Acoustical Ceiling Tile, or exposed structure - painted
Plumbing		N/A
HVAC		Heated and air conditioned
Fire Protection / Life Safety		Wet pipe sprinkler system
Power		Per UFC 3-520-01
Lighting		Per UFC 3-530-01
Communication	Tele.	N/A
	Data	Open Wifi provided
	CCTV	N/A
	CATV	N/A
	Security	N/A
Acoustical		Per UFC 3-450-01 for noise control
Furnishings / Equipment / Casework		N/A
Special Requirements		ABA compliant door opening system

MODULE A – FIRST FLOOR COMMON AREA – COMMUNITY PASSIVE SPACE		
INDEX		A2b
Description/Usage		This is an open activity area for enlisted personnel, includes siting areas, gaming areas, and dining areas.
Ceiling Height		Varies from 10'-0"
Windows		Curtain wall, insulated meeting UFC 4-010-01
Doors	Type	Aluminum storefront entry doors, pair 3'-7', wide style
	Security/ Hardware	Keyed lock set
	View Panels/ Kick Plates	Full glass
Finishes	Walls	Gypsum board – painted or exposed masonry
	Floor	Porcelain tile, quartz epoxy, finished concrete
	Base	Tile, epoxy or resilient
	Ceiling	Gypsum board –painted, Acoustical Ceiling Tile, or exposed structure - painted
Plumbing		N/A
HVAC		Heated and air conditioned
Fire Protection / Life Safety		Wet pipe sprinkler system
Power		Per UFC 3-520-01
Lighting		Per UFC 3-530-01
Communication	Tele.	N/A
	Data	Open Wifi provided
	CCTV	N/A
	CATV	N/A
	Security	N/A
Acoustical		Per UFC 3-450-01 for noise control
Furnishings / Equipment / Casework		N/A
Special Requirements		ABA compliant door opening system

MODULE A- FIRST FLOOR COMMON AREA – KITCHEN		
INDEX		A3
Description/Usage		Kitchen with appliances and countertop.
Ceiling Height		9'-0" minimum
Windows		N/A
Doors	Type	Sliding or folding door, counter shutters
	Security/ Hardware	keyed lock set
	View Panels/ Kick Plates	N/A
Finishes	Walls	Gypsum board - painted
	Floor	Porcelain tile, quartz epoxy or stained concrete
	Base	Tile, epoxy or resilient
	Ceiling	Gypsum board – painted, Acoustical Ceiling Tile (water resistant)
Plumbing		Hot and cold water to sink and appliances.
HVAC		Heated and air conditioned
Fire Protection / Life Safety		Wet pipe sprinkler system
Power		Per UFC 3-520-01
Lighting		Per UFC 3-530-01
Communication	Tele.	N/A
	Data	N/A
	CCTV	N/A
	CATV	N/A
	Security	N/A
Acoustical		N/A
Furnishings / Equipment / Casework		Kitchen sink, Dishwasher, stove, refrigerators (20, freezer, open counters to Activity Area.
Special Requirements		N/A

MODULE A – FIRST FLOOR COMMON AREA – OFFICE / STORAGE / CLOSET		
INDEX		A4
Description/Usage		Office with two work stations, two chairs and a walk-in storage closet.
Ceiling Height		9'-0" minimum
Windows		Interior single-pane view panels to hallway
Doors	Type	Hollow metal, 3'-7'
	Security/ Hardware	Keyed lock set
	View Panels/ Kick Plates	No view panels Kick plates on both sides of doors
Finishes	Walls	Gypsum board - painted
	Floor	Porcelain tile, quartz epoxy, finished concrete, carpet tile
	Base	Tile, epoxy or resilient
	Ceiling	Acoustical Ceiling Tile
Plumbing		N/A
HVAC		Heated and air conditioned
Fire Protection / Life Safety		Wet pipe sprinkler system
Power		Per UFC 3-520-01
Lighting		Per UFC 3-530-01
Communication	Tele.	Telephone lines
	Data	Connection to Base Computer network
	CCTV	N/A
	CATV	N/A
	Security	Building wide surveillance camera system based in this office
Acoustical		N/A
Furnishings / Equipment / Casework		N/A
Special Requirements		N/A

MODULE A – FIRST FLOOR COMMON AREA - UNISEX TOILET		
INDEX		A5
Description/Usage		Accessible Unisex toilet with toilet and sink
Ceiling Height		8'-0" minimum
Windows		N/A
Doors	Type	Hollow metal, 3'-7'
	Security/ Hardware	Privacy lockset
	View Panels/ Kick Plates	No view panels Kick plates on both sides of doors
Finishes	Walls	Ceramic tile, quartz epoxy on gypsum board
	Floor	Ceramic tile, quartz epoxy, finished concrete
	Base	Resilient or tile
	Ceiling	Gypsum board –painted, water resistant
Plumbing		Hot and cold water for fixtures. Floor drains in toilets.
HVAC		Heated and air conditioned plus ventilation
Fire Protection / Life Safety		Wet pipe sprinkler system
Power		Per UFC 3-520-01
Lighting		Per UFC 3-530-01
Communication	Tele.	N/A
	Data	N/A
	CCTV	N/A
	CATV	N/A
	Security	N/A
Acoustical		Per UFC 3-450-01 for noise control
Furnishings / Equipment / Casework		N/A
Special Requirements		Water resistant gypsum board throughout. See RFP for accessories requirements

MODULE A – FIRST FLOOR COMMON AREA - VERTICAL CIRCULATION		
INDEX		A6
Description/Usage		Elevator and open central stair
Ceiling Height		Standard elevator ceiling height, stair is open to third floor
Windows		N/A
Doors	Type	Standard elevator door, no door to open stair
	Security/ Hardware	N/A
	View Panels/ Kick Plates	N/A
Finishes	Walls	Elevator cab standard durable finishes, no walls at open stairs
	Floor	Ceramic tile in elevator, sealed concrete for open stair
	Base	No base
	Ceiling	Elevator cab standard ceiling system, ceiling for stairs at third floor
Plumbing		N/A
HVAC		Heated and air conditioned plus ventilation
Fire Protection / Life Safety		Wet pipe sprinkler system
Power		Per UFC 3-520-01
Lighting		Per UFC 3-530-01
Communication	Tele.	N/A
	Data	Per UFC 3-530-01
	CCTV	N/A
	CATV	N/A
	Security	N/A
Acoustical		N/A
Furnishings / Equipment / Casework		N/A
Special Requirements		N/A

MODULE A – FIRST FLOOR COMMON AREA – BUILDING UTILITY ROOMS		
INDEX		A7
Description/Usage		MEP, Fire Protection, Communications
Ceiling Height		No ceiling, 10'-0" minimum clearance
Windows		N/A
Doors	Type	Hollow metal, pair 3' x 7' to exterior for both Mechanical and Electrical
	Security/ Hardware	Keyed lock set
	View Panels/ Kick Plates	No view panels Kick plates on both sides of doors
Finishes	Walls	CMU - painted
	Floor	Sealed concrete
	Base	No base
	Ceiling	Exposed structure - painted
Plumbing		N/A
HVAC		Heated and air conditioned plus ventilation
Fire Protection / Life Safety		Wet pipe sprinkler system
Power		Per UFC 3-520-01
Lighting		Per UFC 3-530-01
Communication	Tele.	N/A
	Data	Per UFC 3-530-01
	CCTV	N/A
	CATV	N/A
	Security	N/A
Acoustical		Per UFC 3-450-01 for noise control
Furnishings / Equipment / Casework		N/A
Special Requirements		N/A

MODULE B – SECOND FLOOR COMMON AREA – ACTIVITY SPACE		
INDEX		B1
Description/Usage		This is an open activity area for enlisted personnel, includes two smaller activity areas, sitting or gaming.
Ceiling Height		10'- 0"
Windows		Curtain wall, insulated meeting UFC 4-010-0
Doors	Type	N/A
	Security/ Hardware	N/A
	View Panels/ Kick Plates	N/A
Finishes	Walls	Gypsum board - painted
	Floor	Ceramic tile, quartz epoxy, finished concrete
	Base	Tile, epoxy or resilient
	Ceiling	Gypsum board –painted, Acoustical Ceiling Tile
Plumbing		N/A
HVAC		Heating and air conditioning and ventilation
Fire Protection / Life Safety		Wet pipe sprinkler system
Power		Per UFC 3-580-01
Lighting		Per UFC 3-530-01
Communication	Tele.	N/A
	Data	N/A
	CCTV	N/A
	CATV	N/A
	Security	N/A
Acoustical		Per UFC 3-450-01 for noise control
Furnishings / Equipment / Casework		N/A
Special Requirements		N/A

MODULE B - SECOND FLOOR COMMON AREA - FITNESS CENTER		
INDEX		B2
Description/Usage		This room is a physical fitness center
Ceiling Height		9'-0" minimum
Windows		Curtain wall, insulated meeting UFC 4-010-0, interior windows to upper Laundry Room
Doors	Type	Hollow metal, 3' x 7'
	Security/ Hardware	N/A
	View Panels/ Kick Plates	Full glass side lites, door to have full glass Kick plates on both sides of doors
Finishes	Walls	Gypsum board – painted and mirrors on one wall
	Floor	Resilient
	Base	Resilient
	Ceiling	Gypsum board – painted, Acoustical Ceiling Tile
Plumbing		N/A
HVAC		Heating and air conditioning and ventilation
Fire Protection / Life Safety		Wet pipe sprinkler system
Power		Per UFC 3-580-01
Lighting		Per UFC 3-530-01
Communication	Tele.	N/A
	Data	N/A
	CCTV	N/A
	CATV	N/A
	Security	N/A
Acoustical		Per UFC 3-450-01 for noise control
Furnishings / Equipment / Casework		N/A
Special Requirements		Physical fitness equipment

MODULE B – SECOND FLOOR COMMON AREA – BUILDING UTILITY		
INDEX		B3
Description/Usage		Electrical
Ceiling Height		No ceiling, 9'-0" clearance
Windows		N/A
Doors	Type	N/A
	Security/ Hardware	N/A
	View Panels/ Kick Plates	N/A
Finishes	Walls	Gypsum board - painted
	Floor	Sealed concrete
	Base	Resilient
	Ceiling	Gypsum board –painted, exposed structure - painted
Plumbing		N/A
HVAC		Heating and air conditioning and ventilation
Fire Protection / Life Safety		Wet pipe sprinkler system
Power		Per UFC 3-580-01
Lighting		Per UFC 3-530-01
Communication	Tele.	N/A
	Data	N/A
	CCTV	N/A
	CATV	N/A
	Security	N/A
Acoustical		Per UFC 3-450-01 for noise control
Furnishings / Equipment / Casework		N/A
Special Requirements		N/A

MODULE B – SECOND FLOOR COMMON AREA - VERTICAL CIRCULATION		
INDEX		B4
Description/Usage		Elevator and open central stair
Ceiling Height		Standard elevator ceiling height, stair is open to third floor
Windows		N/A
Doors	Type	N/A
	Security/ Hardware	N/A
	View Panels/ Kick Plates	N/A
Finishes	Walls	Elevator cab standard durable finishes, no walls at open stairs
	Floor	Ceramic tile in elevator, sealed concrete for open stair
	Base	No base
	Ceiling	Elevator cab standard ceiling system, ceiling for stairs at third floor
Plumbing		N/A
HVAC		Heating and air conditioning plus ventilation
Fire Protection / Life Safety		Wet pipe sprinkler system
Power		Per UFC 3-580-01
Lighting		Per UFC 3-530-01
Communication	Tele.	N/A
	Data	N/A
	CCTV	Per UFC 3-530-01
	CATV	N/A
	Security	N/A
Acoustical		N/A
Furnishings / Equipment / Casework		N/A
Special Requirements		N/A

MODULE B – SECOND FLOOR COMMON AREA – LAUNDRY ROOM		
INDEX		B5
Description/Usage		Laundry room with a total of 14 dryers and 36 washing machines, double stacked. Center island counter space
Ceiling Height		Open above to 3 rd Floor –" 20'-0"
Windows		Curtain wall, insulated meeting UFC 4-010-0, interior windows to Activity Area
Doors	Type	Hollow metal, pair 3'-7'
	Security/ Hardware	Keyed lock set
	View Panels/ Kick Plates	View panels, 5" x 20" Kick plates on both sides of doors
Finishes	Walls	CMU or gypsum board - painted
	Floor	Ceramic tile, quartz epoxy, finished concrete
	Base	Tile, epoxy or resilient
	Ceiling	Gypsum board –painted, Acoustical Ceiling Tile (water resistant) or exposed structure - painted
Plumbing		Hot and cold water to washer, floor drain
HVAC		Air conditioned, ventilation, heating; dryer vent to exterior
Fire Protection / Life Safety		Wet pipe sprinkler system
Power		Per UFC 3-520-01 in addition to power for washers and dryers
Lighting		Per UFC 3-530-01
Communication	Tele.	N/A
	Data	N/A
	CCTV	N/A
	CATV	N/A
	Security	N/A
Acoustical		Per UFC 3-450-01 for noise control
Furnishings / Equipment / Casework		Washer and dryer
Special Requirements		N/A

MODULE C – THIRD FLOOR COMMON AREA – ACTIVITY SPACE		
INDEX		C1
Description/Usage		Open area connecting to module D at 3 points
Ceiling Height		Ceiling height per floor to floor height, open to first and third floors.
Windows		Curtain wall, insulated meeting UFC 4-010-0
Doors	Type	N/A
	Security/ Hardware	N/A
	View Panels/ Kick Plates	N/A
Finishes	Walls	Gypsum board - painted
	Floor	Ceramic tile, quartz epoxy, finished concrete
	Base	Resilient or tile
	Ceiling	Gypsum board - painted
Plumbing		N/A
HVAC		Heating, ventilation, air conditioning
Fire Protection / Life Safety		Wet pipe sprinkler system
Power		Per UFC 3-520-01
Lighting		Per UFC 3-530-01
Communication	Tele.	N/A
	Data	N/A
	CCTV	N/A
	CATV	N/A
	Security	N/A
Acoustical		Per UFC 3-450-01 for noise control
Furnishings / Equipment / Casework		N/A
Special Requirements		N/A

MODULE C – THIRD FLOOR COMMON AREA – THEATER / MEETING ROOM		
INDEX		C2
Description/Usage		This space is a combination Theater and Meeting/Conference Room. This space has AV equipment for movies, television, etc.
Ceiling Height		9'-0" minimum
Windows		No windows
Doors	Type	Hollow metal, 3' x 7'
	Security/ Hardware	N/A
	View Panels/ Kick Plates	No View panels Kick plates on both sides of doors
Finishes	Walls	Gypsum board - painted
	Floor	Carpet tile
	Base	Resilient
	Ceiling	Gypsum board, painted, Acoustical Ceiling Tile, exposed structure - painted
Plumbing		N/A
HVAC		Heating, ventilation, air conditioning
Fire Protection / Life Safety		Wet pipe sprinkler system
Power		Per UFC 3-520-01
Lighting		Per UFC 3-530-01
Communication	Tele.	N/A
	Data	N/A
	CCTV	Network television connection
	CATV	N/A
	Security	N/A
Acoustical		Per UFC 3-450-01 for noise control
Furnishings / Equipment / Casework		Chairs and conference table.
Special Requirements		N/A

MODULE C - THIRD FLOOR COMMON AREA - BUILDING UTILITY ROOM		
INDEX		C3
Description/Usage		Electrical
Ceiling Height		No ceiling
Windows		N/A
Doors	Type	Hollow metal, 3' x 7'
	Security/ Hardware	N/A
	View Panels/ Kick Plates	N/A
Finishes	Walls	Gypsum board - painted
	Floor	Sealed concrete
	Base	Resilient
	Ceiling	Gypsum board - painted
Plumbing		N/A
HVAC		Heating, ventilation, air conditioning
Fire Protection / Life Safety		Wet pipe sprinkler system
Power		Per UFC 3-520-01
Lighting		Per UFC 3-530-01
Communication	Tele.	N/A
	Data	N/A
	CCTV	N/A
	CATV	N/A
	Security	N/A
Acoustical		Per UFC 3-450-01 for noise control
Furnishings / Equipment / Casework		N/A
Special Requirements		N/A

MODULE C - THIRD FLOOR COMMON AREA - VERTICAL CIRCULATION		
INDEX		C4
Description/Usage		Elevator and stair
Ceiling Height		Standard elevator ceiling height, stair is open to third floor
Windows		N/A
Doors	Type	Hollow metal, 3' x 7'
	Security/ Hardware	N/A
	View Panels/ Kick Plates	N/A
Finishes	Walls	Elevator cab standard durable finishes, no walls at open stairs
	Floor	Ceramic tile in elevator, sealed concrete for open stair
	Base	No base
	Ceiling	Elevator cab standard ceiling system, ceiling for stairs at third floor
Plumbing		N/A
HVAC		Heating and air conditioning plus ventilation
Fire Protection / Life Safety		Wet pipe sprinkler system
Power		Per UFC 3-520-01
Lighting		Per UFC 3-530-01
Communication	Tele.	N/A
	Data	N/A
	CCTV	Per UFC 3-530-01
	CATV	N/A
	Security	N/A
Acoustical		N/A
Furnishings / Equipment / Casework		N/A
Special Requirements		N/A

MODULE D – DORMITORY-BEDROOM		
INDEX	D1	
Description/Usage	This space is a bedroom/living space	
Ceiling Height	10'-0" recommended but can be as low as 8'-0" if required to accommodate HVAC	
Windows	Double glazed windows, insulated meeting UFC 4-010-0 Minimum window area (30 SF for each bedroom), designers can provide single or double windows as necessary to satisfy local architectural compatibility requirement.	
Doors	Type	Hollow metal, 3' x 7'
	Security/ Hardware	N/A
	View Panels/ Kick Plates	N/A
Finishes	Walls	Gypsum board – painted
	Floor	Carpet tile or vinyl plank
	Base	Resilient
	Ceiling	Gypsum board - painted
Plumbing	N/A	
HVAC	Heating, ventilation, air conditioning	
Fire Protection / Life Safety	Wet pipe sprinkler system	
Power	Per UFC 3-520-01	
Lighting	Per UFC 3-530-01	
Communication	Tele.	Provide a telephone line for both commercial telephone and data
	Data	N/A
	CCTV	N/A
	CATV	N/A
	Security	N/A
Acoustical	Per UFC 3-450-01 for noise control	
Furnishings / Equipment / Casework	N/A	
Special Requirements	N/A	

MODULE D – DORMITORY-ENTRY / KITCHENETTE / CLOSET		
INDEX		D2
Description/Usage		Cabinet with sink and undercounter refrigerator for kitchenette, shelves and close rod in closet
Ceiling Height		10'-0" recommended but can be as low as 8'-0" if required to accommodate HVAC
Windows		N/A
Doors	Type	Hollow metal, 3' x 7', full louvered
	Security/ Hardware	Keyed lock set
	View Panels/ Kick Plates	Flush door, no view panels Kick plates both sides of door
Finishes	Walls	Gypsum board – painted
	Floor	Ceramic tile, vinyl plank, finished concrete
	Base	Resilient
	Ceiling	Gypsum board - painted
Plumbing		Hot and cold water for sink
HVAC		Heating, ventilation, air conditioning
Fire Protection / Life Safety		Wet pipe sprinkler system
Power		Per UFC 3-520-01
Lighting		Per UFC 3-530-01
Communication	Tele.	N/A
	Data	N/A
	CCTV	N/A
	CATV	N/A
	Security	N/A
Acoustical		Per UFC 3-450-01 for noise control
Furnishings / Equipment / Casework		N/A
Special Requirements		N/A

MODULE D – DORMITORY - BATHROOM		
INDEX		D3
Description/Usage		Shower, toilet and countertop sink.
Ceiling Height		10'-0" recommended but can be as low as 8'-0" if required to accommodate HVAC
Windows		N/A
Doors	Type	Hollow metal, 3' x 7'
	Security/ Hardware	Keyed lock set
	View Panels/ Kick Plates	Flush door, no view panels Kick plates both sides of door
Finishes	Walls	Gypsum board – painted
	Floor	Ceramic tile, finished concrete
	Base	Resilient or tile
	Ceiling	Gypsum board (water resistant) - painted
Plumbing		Hot and cold water for fixtures. Floor drain
HVAC		Heating, ventilation, air conditioning
Fire Protection / Life Safety		Wet pipe sprinkler system
Power		Per UFC 3-520-01
Lighting		Per UFC 3-530-01
Communication	Tele.	N/A
	Data	N/A
	CCTV	N/A
	CATV	N/A
	Security	N/A
Acoustical		Per UFC 3-450-01 for noise control
Furnishings / Equipment / Casework		N/A
Special Requirements		N/A

MODULE D – DORMITORY – MECHANICAL CHASE		
INDEX		D4
Description/Usage		This is a vertical chase for mechanical and plumbing connections for Dormitory Rooms
Ceiling Height		N/A
Windows		N/A
Doors	Type	N/A
	Security/ Hardware	N/A
	View Panels/ Kick Plates	N/A
Finishes	Walls	Gypsum board - painted
	Floor	Sealed concrete
	Base	N/A
	Ceiling	N/A
Plumbing		N/A
HVAC		N/A
Fire Protection / Life Safety		If required by codes
Power		Per UFC 3-520-01
Lighting		Per UFC 3-530-01
Communication	Tele.	N/A
	Data	N/A
	CCTV	N/A
	CATV	N/A
	Security	N/A
Acoustical		Per UFC 3-450-01 for noise control
Furnishings / Equipment / Casework		N/A
Special Requirements		N/A

CIRCULATION		
INDEX		
Description/Usage		This circulation is for the Dormitory wings
Ceiling Height		8'-0"
Windows		N/A
Doors	Type	Hollow metal, 3' x 7' at stair ends, pair 3'-7' going to Common Areas, 1-hr. rated on hold open devices.
	Security/ Hardware	Keyed lockset to exterior stair, panic hardware for pair of rated doors to Common Areas
	View Panels/ Kick Plates	No view panels Kick plates both side of doors
Finishes	Walls	Gypsum board - painted
	Floor	Ceramic tile, finished concrete
	Base	Resilient
	Ceiling	Acoustical Ceiling Tile
Plumbing		N/A
HVAC		Heating, ventilation, air conditioning
Fire Protection / Life Safety		Wet pipe sprinkler system
Power		Per UFC 3-520-01
Lighting		Per UFC 3-530-01
Communication	Tele.	N/A
	Data	N/A
	CCTV	N/A
	CATV	N/A
	Security	Building wide Surveillance system
Acoustical		Per UFC 3-450-01 for noise control
Furnishings / Equipment / Casework		N/A
Special Requirements		N/A

2.4.H. Interactive Programming Worksheet

MODULE NO.	AREA	NO. OCCUP	SF PER USER	NO. OF ROOMS REQUIR	NUMBER OF SINGLE DORMITORY ROOMS	NET USER REQUIREMENTS		COMMENTS
						SF	SM	
MODULE A - FIRST FLOOR COMMON AREA								
A1	ENTRY VESTIBULE			1		235	21.83	1
A2	A2a COMMUNITY A2b PASSIVE ACTIVITY SPACE			1		3,255	243.46	1
A3	KITCHEN			1		160	48.77	1
A4	OFFICE/STORAGE CLOSET			1		125	11.61	2
A5	UNI-SEX TOILET			1		130	12.08	3
A7	VERTICAL CIRCULATION (ELEVATOR/STAIRS)			1		170	15.79	5
A6	BUILDING UTILITY ROOM (MEP, COMM, ETC)			1		775	72.00	4
SUBTOTAL MODULE A						4,850	450.57	
MODULE B - SECOND FLOOR COMMON AREA								
B1	ACTIVITY SPACE			2		1,130	104.99	1
B2	FITNESS CENTER			1		815	75.71	1
B3	BUILDING UTILITY ROOM (ELECTRICAL)			1		45	4.18	4
B4	VERTICAL CIRCULATION (ELEVATOR/STAIRS)			1		170	15.79	5
B5	LAUNDRY ROOM			1		595	55.28	1
SUBTOTAL MODULE B						2,755	255.94	
MODULE C - THIRD FLOOR COMMON AREA								
C1	ACTIVITY SPACE			2		985	91.51	1
C2	THEATER/MEETING ROOM			1		810		1
C3	BUILDING UTILITY ROOM (ELECTRICAL)			1		45		4
C4	VERTICAL CIRCULATION (ELEVATOR/STAIRS)			1		170	15.79	5
SUBTOTAL MODULE C						2,010	186.73	
MODULE D - DORMITORY								
D	SINGLE DORMITORY MODULE			1	144	50,400	4,682.16	8
D1	BEDROOM			*		180		9
D2	BATHROOM			*		55		9
D3	MECHANICAL CHASE			*		5		9
D4	ENTRY/KITCHEN/CLOSET			*		40		9
SUBTOTAL MODULE D						50,400	4,682.16	
NET TO GROSS								
	MODULE A			1		516	47.94	5
	MODULE B			1		472		5
	MODULE C			1		472		5
	MODULE D			1		8,577	796.80	5
SUBTOTAL WALLS						10,037	932.44	
CIRCULATION								
	VERTICAL CIRCULATION (STAIRS & ELEVATOR) MODULE A			1		170	15.79	5
	VERTICAL CIRCULATION (STAIRS & ELEVATOR) MODULE B			1		170	15.79	5
	VERTICAL CIRCULATION (STAIRS & ELEVATOR) MODULE C			1		170	15.79	5
	CORRIDORS & VERTICAL CIRCULATION (STAIRS) MODULE D			1		11,190	1,039.55	5
SUBTOTAL CORRIDOR						11,700	1,085.93	
SUBTOTAL CIRCULATION AREA							0.00	
TOTAL FACILITY NET FLOOR AREA						60,015	5,575.39	
	NET TO GROSS MULTIPLIER	8.4%				65,026		5
	CIRCULATION MULTIPLIER	10.3%				71,724		5
TOTAL FACILITY GROSS ARE (ROUNDED)						71,720	6,643	
NUMBER OF SINGLE DORMITORY ROOMS				144				10
COMMENTS:								
1	These spaces are used as defined in the requested program.							
2	Reference Air Force Manual 32-1084, Chapter 6 and Chapter 7 for general Air Force Facility standards.							
3	Each Dormitory room has a toilet and first floor has a single Uni-Sex ABA compliant toilet.							
4	Building Support areas are estimator only and actual size is dependent on requirements for climate zone, location, system, etc. (Sq. Ft. not included in Total Facility Net Floor Area as this area is included in Net to Gross Multiplier).							
5	Per AFM 32-1084 Chapter 1, net-to-gross multiplier of up to 25%.							
6	All area SF's are rounded to the nearest whole number.							
7	This worksheet represents a 144 single-person dormitory T-shaped three-story facility rounded up to 71,610 Square Feet.							
8	Dormitory module consists of Bedroom, Bathroom, Entry/Kitchenette/Closet and shared Chare, Interior wall for a total square footage of 350 Sq. Ft.							
9	*Value not included in the subtotal net total facility as it is part of the 350 Sq. Ft. single-person Dormitory Room area.							
10	This is based on the number of Dormitory Room, the Activity Space and the Laundry Room, size adjust with the number of Dormitory Rooms. The Building utility space will need to be adjusted based on system selected and geographic region where facility is located. The remainder of space in this Interactive Programming Worksheet do not change in size per the number of Dormitory Rooms.							

MODULE NO.	AREA	NO. OCCUP	SF PER USER	NO. OF ROOMS REQUIRED	NUMBER OF SINGLE DORMITORY ROOMS	NET USER REQUIREMENTS		COMMENTS
						SF	SM	
MODULE A - FIRST FLOOR COMMON AREA								
A1	ENTRY VESTIBULE			1		235	21.83	1
A2	A2a COMMUNITY A2b PASSIVE ACTIVITY SPACE			1		3,260	243.40	1
A3	KITCHEN			1		160	48.77	1
A4	OFFICE/STORAGE CLOSET			1		125	11.61	2
A5	UNI-SEX TOILET			1		65	6.04	3
A6	BUILDING UTILITY ROOM (MEP, COMM, ETC)			1		775	72.00	4
SUBTOTAL MODULE A						4,620	429.20	
MODULE B - SECOND FLOOR COMMON AREA								
B1	ACTIVITY SPACE			2		1,130	104.98	1
B2	FITNESS CENTER			1		820	76.18	1
B3	BUILDING UTILITY ROOM (ELECTRICAL)			1		40	3.72	4
B5	LAUNDRY ROOM			1		595	55.28	1
SUBTOTAL MODULE B						2,585	240.15	
MODULE C - THIRD FLOOR COMMON AREA								
C1	ACTIVITY SPACE			2		985	91.51	1
C2	THEATER/MEETING ROOM			1		820	76.18	1
C3	BUILDING UTILITY ROOM (ELECTRICAL)			1		40	3.72	4
SUBTOTAL MODULE C						1,845	171.40	
MODULE D - DORMITORY								
D	SINGLE DORMITORY MODULE			1	144	40,320	3,745.73	8
D1	BEDROOM			*		180	16.72	9
D2	BATHROOM			*		55	5.11	9
D3	MECHANICAL CHASE			*		5	0.46	9
D4	ENRTRY/KITCHEN/CLOSET			*		40	3.72	9
SUBTOTAL MODULE D						40,320	3,745.73	
NET TO GROSS								
	MODULE A			1		505	46.91	5
	MODULE B			1		795	73.86	5
	MODULE C			1		705	65.49	5
	MODULE D			1		9,565	888.59	5
SUBTOTAL WALLS						11,570	1,074.85	
CIRCULATION								
	VERTICAL CIRCULATION (STAIRS & ELEVATOR) MODULE A			1		170	15.79	5
	VERTICAL CIRCULATION (STAIRS & ELEVATOR) MODULE B			1		170	15.79	5
	VERTICAL CIRCULATION (STAIRS & ELEVATOR) MODULE C			1		170	15.79	5
	CORRIDORS & VERTICAL CIRCULATION (STAIRS) MODULE D			1		11,190	1,039.55	5
SUBTOTAL CORRIDOR						11,700	1,086.93	
SUBTOTAL CIRCULATION AREA							0.00	
TOTAL FACILITY NET FLOOR AREA						49,370	4,586.47	
	NET TO GROSS MULTIPLIER	23%				60,940	5,661.33	5
	CIRCULATION MULTIPLIER	24%				75,382	7,002.98	5
TOTAL FACILITY GROSS AREA (ROUNDED)						75,380	7,003	6
	NUMBER OF SINGLE DORMITORY ROOMS			144				10
COMMENTS:								
1	These spaces are user defined/requested areas.							
2	Reference Air Force Manual 32-1084, Chapter 6 and Chapter 7 for general Air Force Facility standards.							
3	Each Dormitory room has a toilet and first floor has a single Uni-Sex ABA compliant toilet.							
4	Building Support areas are estimates only and actual size is dependent on requirements for climate zone, location, system, etc. (Sq. Ft. not included in Total Facility Net Floor Area as this area is included in Net to Gross Multiplier).							
5	Per AFM 32-1084 Chapter 1, net-to-gross multiplier of up to 25%.							
6	All area SF's are rounded to the nearest whole 5 number.							
7	This worksheet represents a 144 single-person dormitory T-shaped three-story facility rounded up to 75,380 Square Feet.							
8	Dormitory module consist of Bedroom, Bathroom, Entry/Kitchenette/Closet and shared Chase, Interior walls for a total square footage of 350 Sq. Ft.							
9	*Value not included in the subtotal not the total facility as is part of the 350 Sq. Ft. single-person Dormitory Room area.							
10	This is based on the number of Dormitory Room, the Activity Spaces and the Laundry Room sizes adjust with the number of Dormitory Rooms. The Building utility spaces will need to be adjusted based on systems selected and geographic regions where facility is located. The remainder of spaces in this Interactive Programming Worksheet do not change in size per the number of Dormitory Rooms.							