

GENERAL NOTES

1. USE THESE DOCUMENTS IN CONJUNCTION WITH THE STANDARD DESIGN GUIDE AND INTERACTIVE PROGRAMMING WORKSHEET.

**DRAWING LIST**

NUMBER	NAME
A-0	COVER SHEET
A-1	FIRST FLOOR PLAN T - SHAPE
A-2	SECOND FLOOR PLAN T - SHAPE
A-3	THIRD FLOOR PLAN T - SHAPE
A-4	FIRST FLOOR PLAN L - SHAPE
A-5	SECOND FLOOR PLAN L - SHAPE
A-6	THIRD FLOOR PLAN L - SHAPE
A-7	FIRST FLOOR PLAN H - SHAPE
A-8	SECOND FLOOR PLAN H - SHAPE
A-9	THIRD FLOOR PLAN H - SHAPE
A-10	ENLARGE FIRST FLOOR PLAN
A-11	ENLARGE SECOND FLOOR PLAN
A-12	ENLARGE THIRD FLOOR PLAN
A-13	DORMITORY FLOOR PLAN

# AIR FORCE STANDARD DESIGN PERMANENT PARTY ENLISTED DORMITORY



PHASE: FINAL  
DATE: JANUARY 2019  
SCALE: AS INDICATED

**AIR FORCE  
CIVIL ENGINEER  
CENTER**

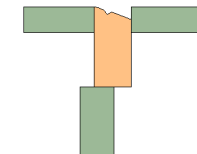
CIVIL ENGINEER SQUADRON:  
PERMANENT PARTY ENLISTED DORMITORY  
ANY AFB, CONUS  
**COVER SHEET**

SHEET  
NUMBER  
A-0

MODULE TYPE LEGEND

- A- FIRST FLOOR COMMON AREA
- D- DORMITORY
- CIRCULATION

KEYPLAN



1ST FLOOR - NET FLOOR AREA  
21,960 SQ.FT.

MODULE A COMMON AREA  
4,620 SQ.FT.

MODULE A CIRCULATION  
170 SQ.FT.

MODULE D DORMITORY  
13,440 SQ.FT.

MODULE D CIRCULATION  
3,730 SQ.FT.

TOTAL FACILITY GROSS FLOOR AREA (T-SHAPE):  
75,380 SQ.FT.

52' - 8"

53' - 0"

128' - 8"

130' - 0"

54' - 0"

130' - 0"

\* ENTRY VESTIBULE  
235 SF

OFFICE / STORAGE / CLOSET  
125 SF

KITCHEN  
160 SF

UNI-SEX TOILET  
65 SF

COMMUNITY ACTIVITY SPACE  
2620 SF

COMMUNITY PASSIVE SPACE  
640 SF

ELECTRICAL  
130 SF

MECHANICAL  
645 SF

22' - 0"

52' - 8"

0 15' 30' 60'

SCALE: 1" = 30'

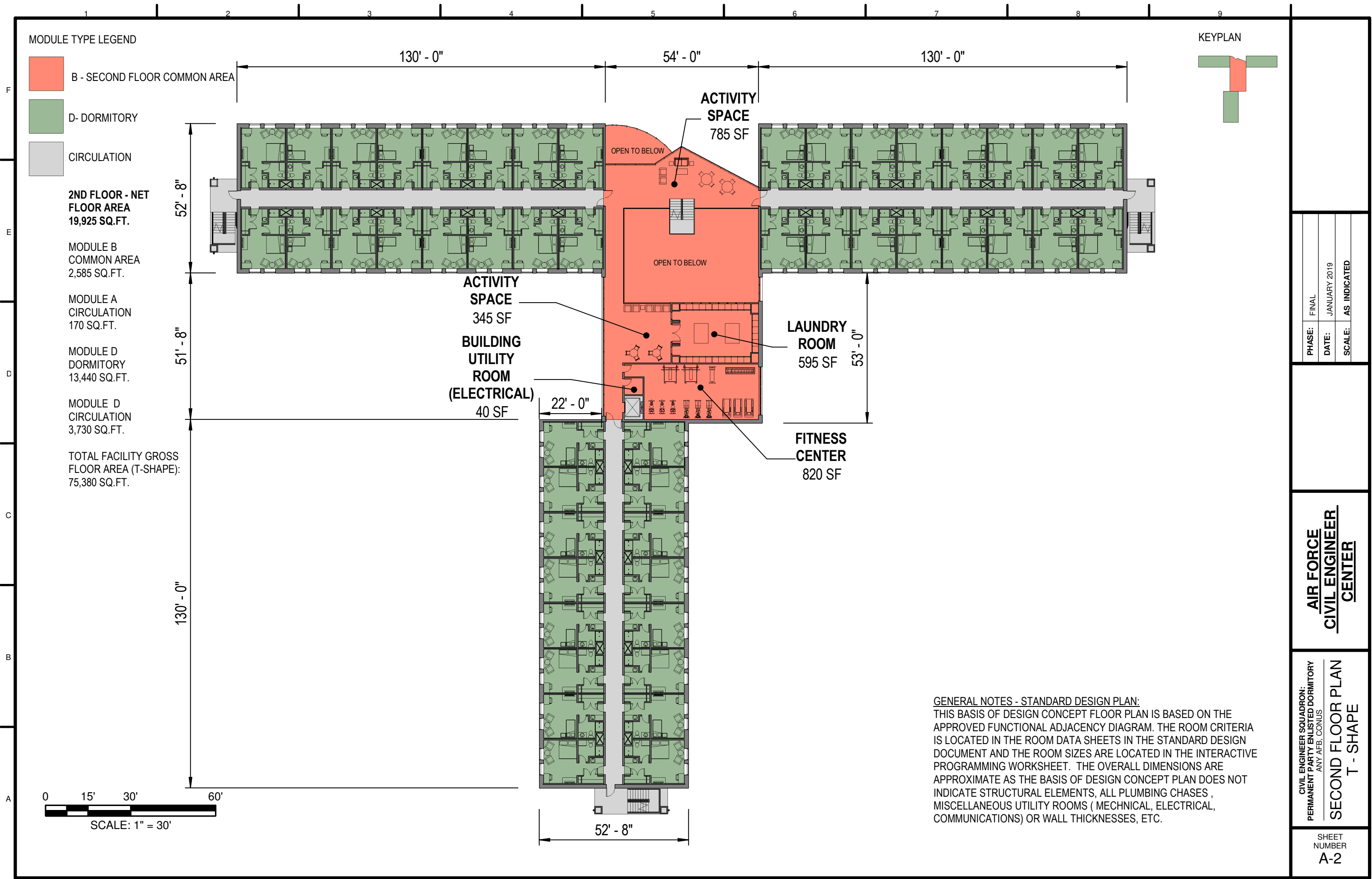
GENERAL NOTES - STANDARD DESIGN PLAN:  
THIS BASIS OF DESIGN CONCEPT FLOOR PLAN IS BASED ON THE APPROVED FUNCTIONAL ADJACENCY DIAGRAM. THE ROOM CRITERIA IS LOCATED IN THE ROOM DATA SHEETS IN THE STANDARD DESIGN DOCUMENT AND THE ROOM SIZES ARE LOCATED IN THE INTERACTIVE PROGRAMMING WORKSHEET. THE OVERALL DIMENSIONS ARE APPROXIMATE AS THE BASIS OF DESIGN CONCEPT PLAN DOES NOT INDICATE STRUCTURAL ELEMENTS, ALL PLUMBING CHASES, MISCELLANEOUS UTILITY ROOMS ( MECHANICAL, ELECTRICAL, COMMUNICATIONS) OR WALL THICKNESSES, ETC.  
\* FACADE AND VESTIBULE DESIGN SHOWN IS NOTIONAL. DESIGNERS MAY ADJUST DESIGN AS REQUIRED TO MEET INSTALLATION FACILITY STANDARDS.

PHASE:	FINAL
DATE:	JANUARY 2019
SCALE:	AS INDICATED

**AIR FORCE  
CIVIL ENGINEER  
CENTER**

CIVIL ENGINEER SQUADRON:  
PERMANENT PARTY ENLISTED DORMITORY  
ANY AFB, CONUS  
**FIRST FLOOR PLAN  
T - SHAPE**

SHEET NUMBER  
**A-1**

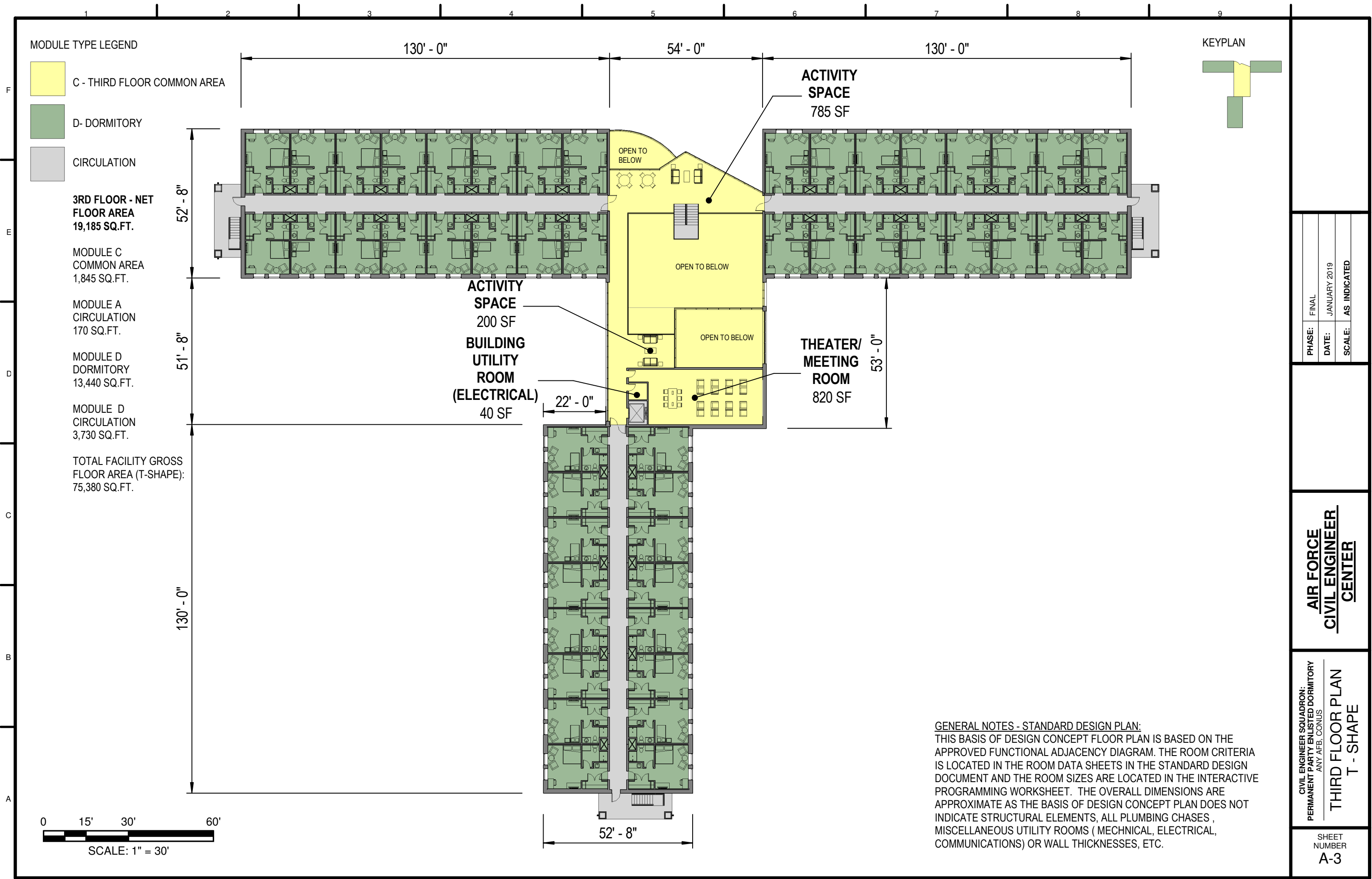


PHASE:	FINAL
DATE:	JANUARY 2019
SCALE:	AS INDICATED

**AIR FORCE  
 CIVIL ENGINEER  
 CENTER**

CIVIL ENGINEER SQUADRON:  
 PERMANENT PARTY ENLISTED DORMITORY  
 ANY AFB, CONUS  
**SECOND FLOOR PLAN  
 T-SHAPE**

SHEET NUMBER  
**A-2**

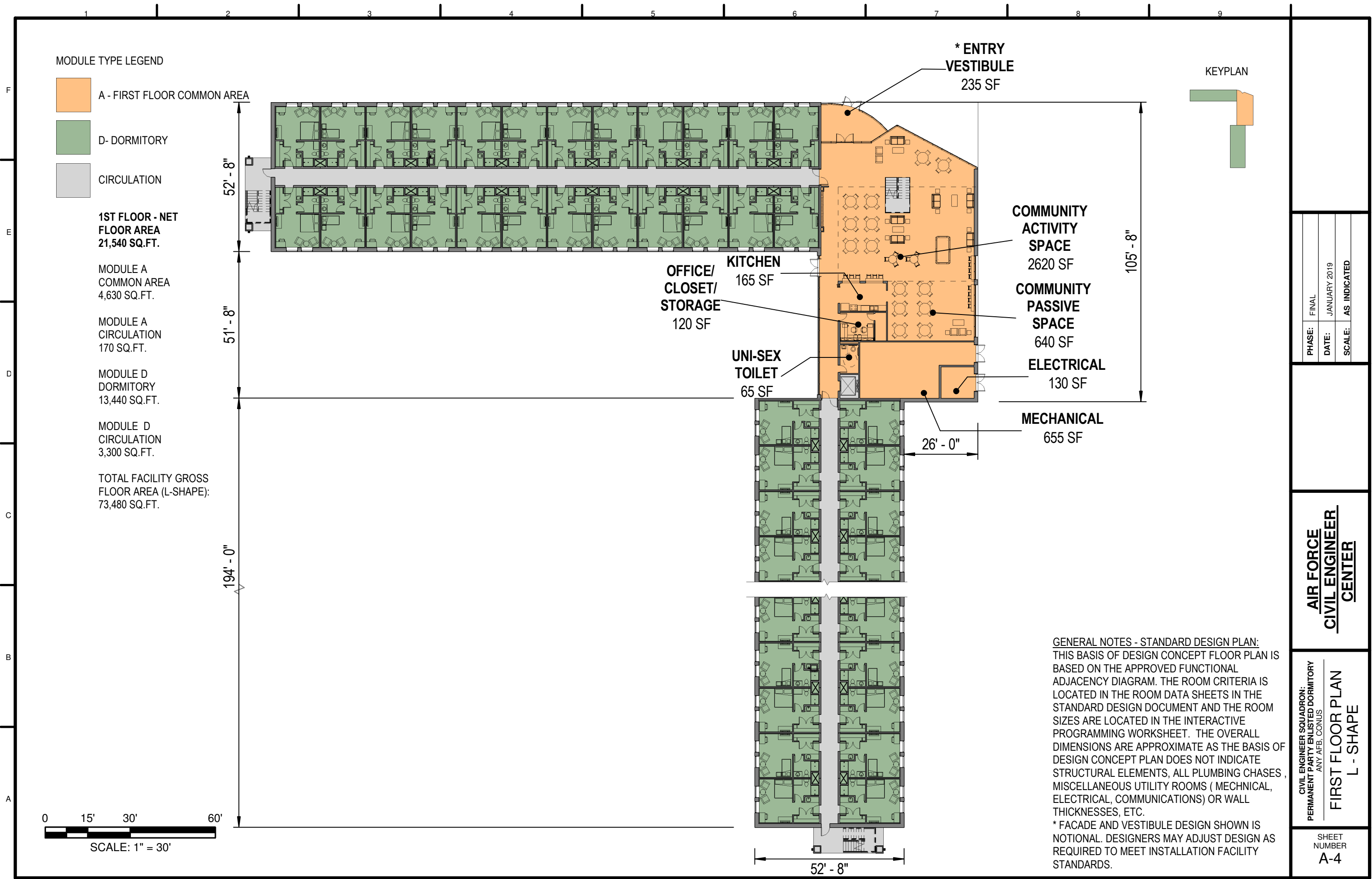


PHASE:	FINAL
DATE:	JANUARY 2019
SCALE:	AS INDICATED

**AIR FORCE  
 CIVIL ENGINEER  
 CENTER**

CIVIL ENGINEER SQUADRON:  
 PERMANENT PARTY ENLISTED DORMITORY  
 ANY AFB, CONUS  
**THIRD FLOOR PLAN  
 T - SHAPE**

SHEET NUMBER  
**A-3**



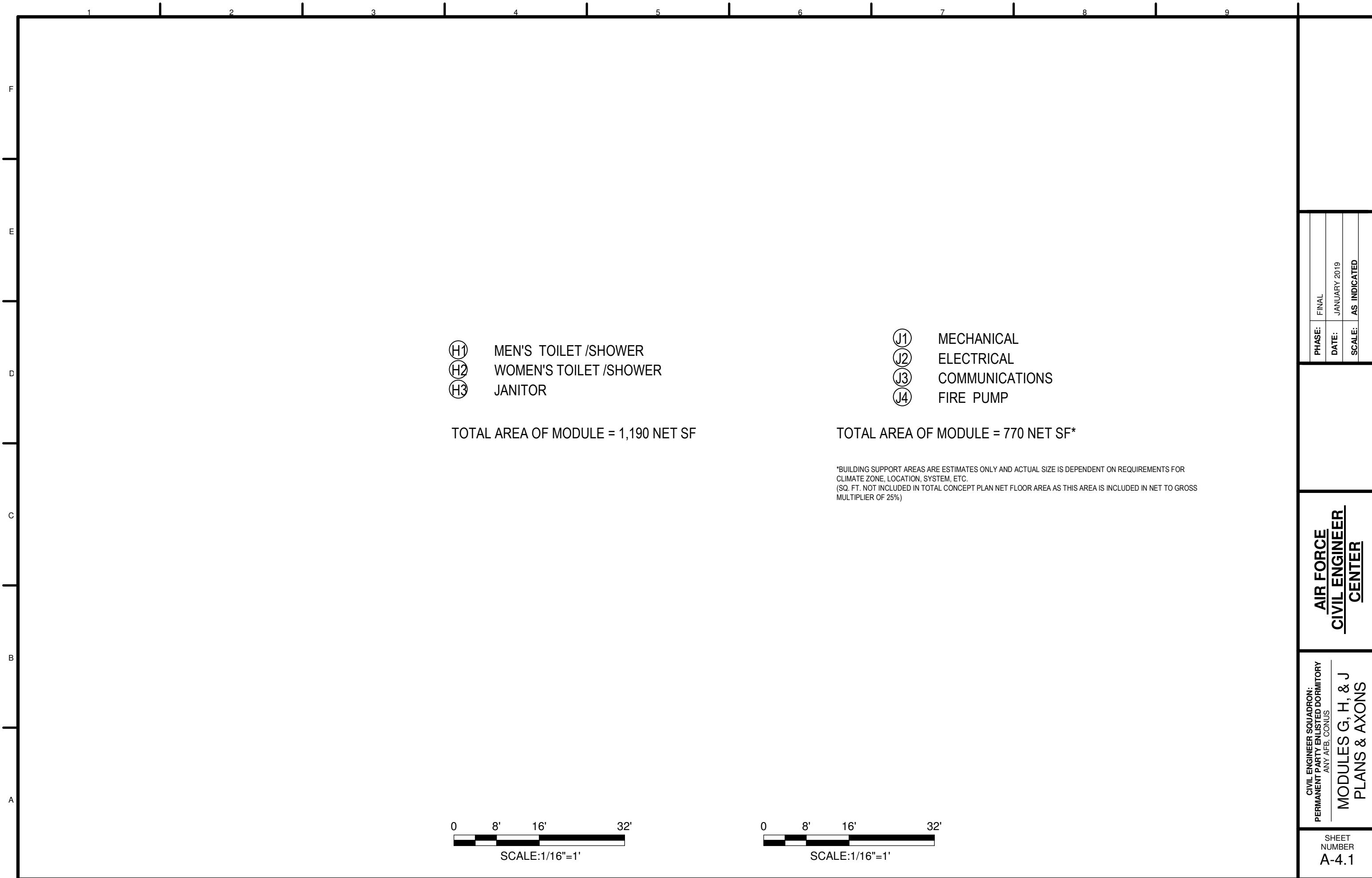
**GENERAL NOTES - STANDARD DESIGN PLAN:**  
 THIS BASIS OF DESIGN CONCEPT FLOOR PLAN IS BASED ON THE APPROVED FUNCTIONAL ADJACENCY DIAGRAM. THE ROOM CRITERIA IS LOCATED IN THE ROOM DATA SHEETS IN THE STANDARD DESIGN DOCUMENT AND THE ROOM SIZES ARE LOCATED IN THE INTERACTIVE PROGRAMMING WORKSHEET. THE OVERALL DIMENSIONS ARE APPROXIMATE AS THE BASIS OF DESIGN CONCEPT PLAN DOES NOT INDICATE STRUCTURAL ELEMENTS, ALL PLUMBING CHASES, MISCELLANEOUS UTILITY ROOMS ( MECHANICAL, ELECTRICAL, COMMUNICATIONS) OR WALL THICKNESSES, ETC.  
 \* FACADE AND VESTIBULE DESIGN SHOWN IS NOTIONAL. DESIGNERS MAY ADJUST DESIGN AS REQUIRED TO MEET INSTALLATION FACILITY STANDARDS.

PHASE:	FINAL
DATE:	JANUARY 2019
SCALE:	AS INDICATED

**AIR FORCE  
 CIVIL ENGINEER  
 CENTER**

CIVIL ENGINEER SQUADRON:  
 PERMANENT PARTY ENLISTED DORMITORY  
 ANY AFB, CONUS  
**FIRST FLOOR PLAN  
 L - SHAPE**

SHEET NUMBER  
**A-4**



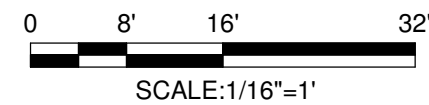
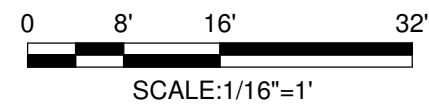
- Ⓜ H1 MEN'S TOILET /SHOWER
- Ⓜ H2 WOMEN'S TOILET /SHOWER
- Ⓜ H3 JANITOR

TOTAL AREA OF MODULE = 1,190 NET SF

- Ⓜ J1 MECHANICAL
- Ⓜ J2 ELECTRICAL
- Ⓜ J3 COMMUNICATIONS
- Ⓜ J4 FIRE PUMP

TOTAL AREA OF MODULE = 770 NET SF\*

\*BUILDING SUPPORT AREAS ARE ESTIMATES ONLY AND ACTUAL SIZE IS DEPENDENT ON REQUIREMENTS FOR CLIMATE ZONE, LOCATION, SYSTEM, ETC. (SQ. FT. NOT INCLUDED IN TOTAL CONCEPT PLAN NET FLOOR AREA AS THIS AREA IS INCLUDED IN NET TO GROSS MULTIPLIER OF 25%)



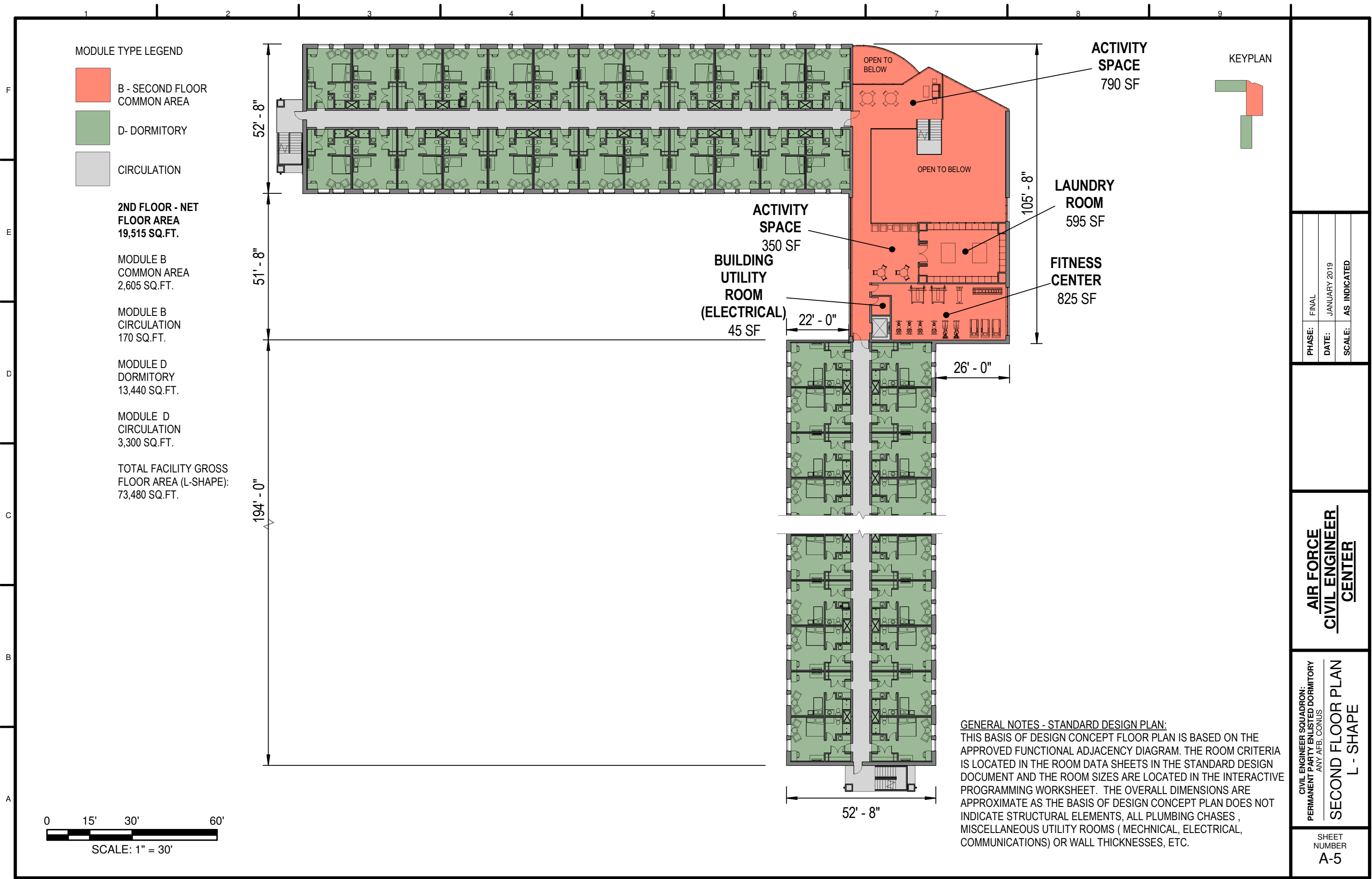
PHASE:	FINAL
DATE:	JANUARY 2019
SCALE:	AS INDICATED

**AIR FORCE  
CIVIL ENGINEER  
CENTER**

CIVIL ENGINEER SQUADRON:  
PERMANENT PARTY ENLISTED DORMITORY  
ANY AFB, CONUS  
**MODULES G, H, & J  
PLANS & AXONS**

SHEET  
NUMBER  
**A-4.1**





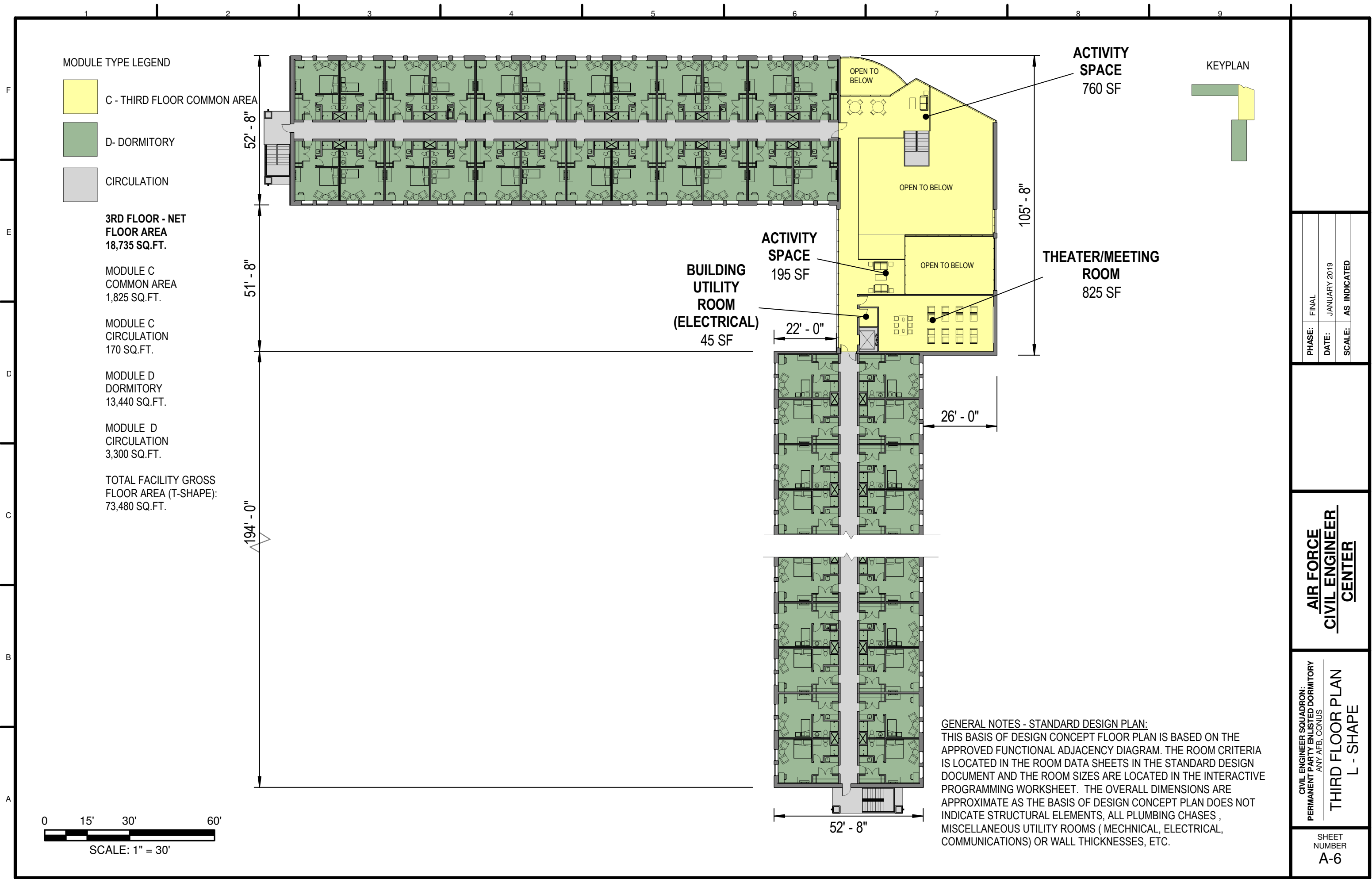
PHASE:	FINAL
DATE:	JANUARY 2019
SCALE:	AS INDICATED

**AIR FORCE  
CIVIL ENGINEER  
CENTER**

CIVIL ENGINEER SQUADRON:  
PERMANENT PARTY ENLISTED DORMITORY  
ANY AFB, CONUS

**SECOND FLOOR PLAN  
L - SHAPE**

SHEET NUMBER  
**A-5**



**GENERAL NOTES - STANDARD DESIGN PLAN:**  
 THIS BASIS OF DESIGN CONCEPT FLOOR PLAN IS BASED ON THE APPROVED FUNCTIONAL ADJACENCY DIAGRAM. THE ROOM CRITERIA IS LOCATED IN THE ROOM DATA SHEETS IN THE STANDARD DESIGN DOCUMENT AND THE ROOM SIZES ARE LOCATED IN THE INTERACTIVE PROGRAMMING WORKSHEET. THE OVERALL DIMENSIONS ARE APPROXIMATE AS THE BASIS OF DESIGN CONCEPT PLAN DOES NOT INDICATE STRUCTURAL ELEMENTS, ALL PLUMBING CHASES, MISCELLANEOUS UTILITY ROOMS ( MECHANICAL, ELECTRICAL, COMMUNICATIONS) OR WALL THICKNESSES, ETC.

PHASE:	FINAL
DATE:	JANUARY 2019
SCALE:	AS INDICATED

**AIR FORCE  
 CIVIL ENGINEER  
 CENTER**

CIVIL ENGINEER SQUADRON:  
 PERMANENT PARTY ENLISTED DORMITORY  
 ANY AFB, CONUS  
**THIRD FLOOR PLAN  
 L - SHAPE**

SHEET NUMBER  
**A-6**



MODULE TYPE LEGEND

- A - FIRST FLOOR COMMON AREA
- D- DORMITORY
- CIRCULATION

**1ST FLOOR - NET FLOOR AREA**  
22,910 SQ.FT.

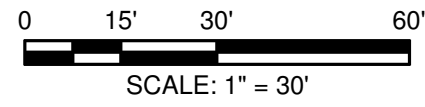
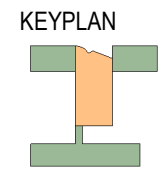
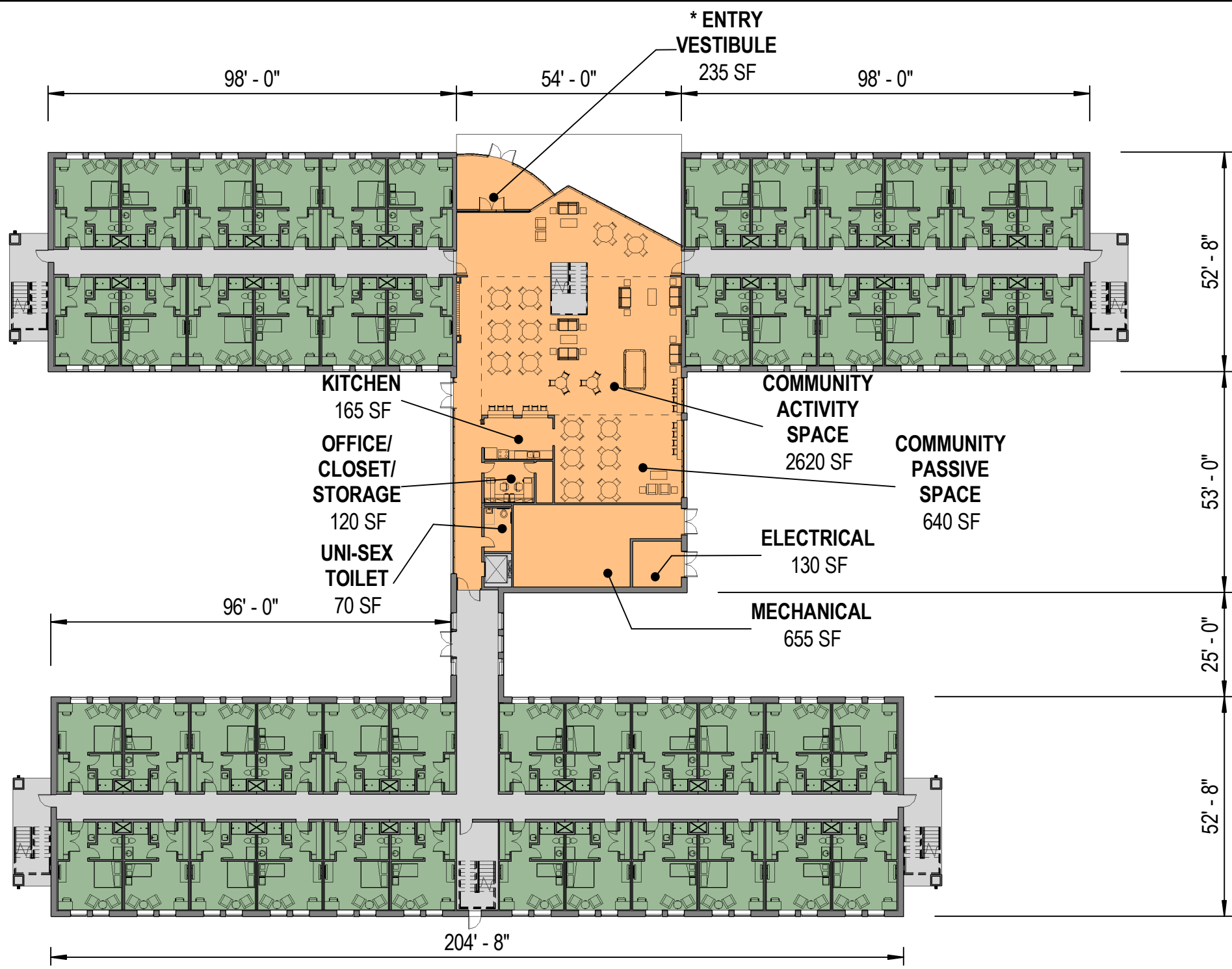
MODULE A  
COMMON AREA  
4,635 SQ.FT.

MODULE A  
CIRCULATION  
170 SQ.FT.

MODULE D  
DORMITORY  
13,440 SQ.FT.

MODULE D  
CIRCULATION  
4,665 SQ.FT.

TOTAL FACILITY GROSS FLOOR AREA (H-SHAPE):  
78,835 SQ.FT.



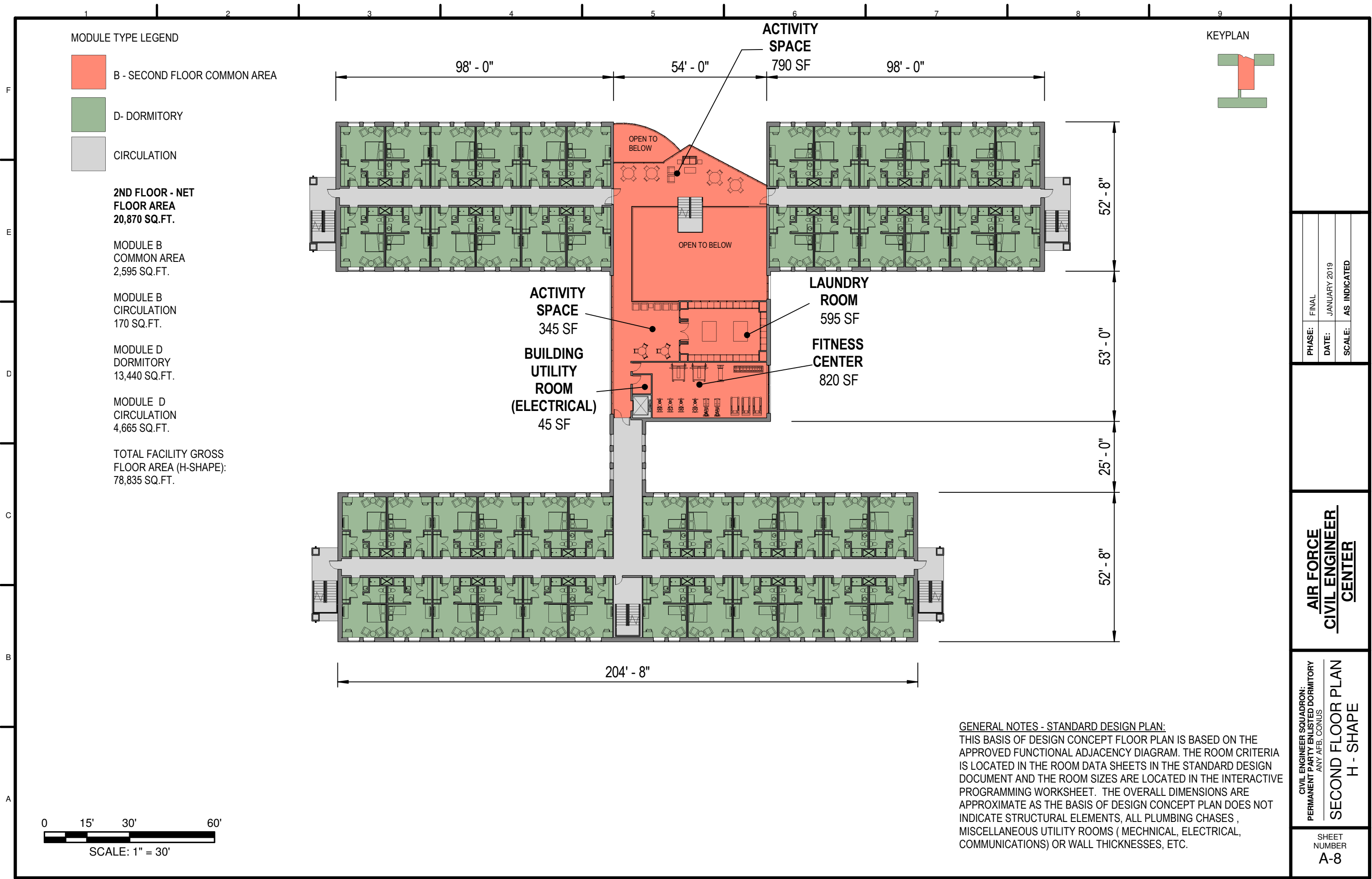
**GENERAL NOTES - STANDARD DESIGN PLAN:**  
THIS BASIS OF DESIGN CONCEPT FLOOR PLAN IS BASED ON THE APPROVED FUNCTIONAL ADJACENCY DIAGRAM. THE ROOM CRITERIA IS LOCATED IN THE ROOM DATA SHEETS IN THE STANDARD DESIGN DOCUMENT AND THE ROOM SIZES ARE LOCATED IN THE INTERACTIVE PROGRAMMING WORKSHEET. THE OERALL DIMENSIONS ARE APPROXIMATE AS THE BASIS OF DESIGN CONCEPT PLAN DOES NOT INDICATE STRUCTURAL ELEMENTS, ALL PLUMBING CHASES, MISCELLANEOUS UTILITY ROOMS ( MECHANICAL, ELECTRICAL, COMMUNICATIONS) OR WALL THICKNESSES, ETC.  
\* FAÇADE AND VESTIBULE DESIGN SHOWN IS NOTIONAL. DESIGNERS MAY ADJUST DESIGN AS REQUIRED TO MEET INSTALLATION FACILITY STANDARDS.

PHASE:	FINAL
DATE:	JANUARY 2019
SCALE:	AS INDICATED

**AIR FORCE  
CIVIL ENGINEER  
CENTER**

CIVIL ENGINEER SQUADRON:  
PERMANENT PARTY ENLISTED DORMITORY  
ANY AFB, CONUS  
**FIRST FLOOR PLAN  
H - SHAPE**

SHEET NUMBER  
**A-7**



- MODULE TYPE LEGEND**
- B - SECOND FLOOR COMMON AREA
  - D- DORMITORY
  - CIRCULATION

**2ND FLOOR - NET FLOOR AREA**  
20,870 SQ.FT.

MODULE B COMMON AREA  
2,595 SQ.FT.

MODULE B CIRCULATION  
170 SQ.FT.

MODULE D DORMITORY  
13,440 SQ.FT.

MODULE D CIRCULATION  
4,665 SQ.FT.

TOTAL FACILITY GROSS FLOOR AREA (H-SHAPE):  
78,835 SQ.FT.

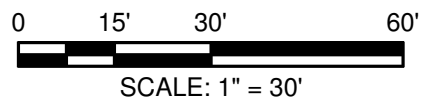
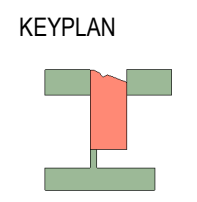
**ACTIVITY SPACE**  
790 SF

**ACTIVITY SPACE**  
345 SF

**BUILDING UTILITY ROOM (ELECTRICAL)**  
45 SF

**LAUNDRY ROOM**  
595 SF

**FITNESS CENTER**  
820 SF



**GENERAL NOTES - STANDARD DESIGN PLAN:**  
THIS BASIS OF DESIGN CONCEPT FLOOR PLAN IS BASED ON THE APPROVED FUNCTIONAL ADJACENCY DIAGRAM. THE ROOM CRITERIA IS LOCATED IN THE ROOM DATA SHEETS IN THE STANDARD DESIGN DOCUMENT AND THE ROOM SIZES ARE LOCATED IN THE INTERACTIVE PROGRAMMING WORKSHEET. THE OVERALL DIMENSIONS ARE APPROXIMATE AS THE BASIS OF DESIGN CONCEPT PLAN DOES NOT INDICATE STRUCTURAL ELEMENTS, ALL PLUMBING CHASES, MISCELLANEOUS UTILITY ROOMS (MECHANICAL, ELECTRICAL, COMMUNICATIONS) OR WALL THICKNESSES, ETC.

PHASE:	FINAL
DATE:	JANUARY 2019
SCALE:	AS INDICATED

**AIR FORCE  
CIVIL ENGINEER  
CENTER**

CIVIL ENGINEER SQUADRON:  
PERMANENT PARTY ENLISTED DORMITORY  
ANY AFB, CONUS  
**SECOND FLOOR PLAN  
H - SHAPE**

SHEET NUMBER  
**A-8**

MODULE TYPE LEGEND

- C - THIRD FLOOR COMMON AREA
- D- DORMITORY
- CIRCULATION

**3RD FLOOR - NET FLOOR AREA**  
20,105 SQ.FT.

MODULE C COMMON AREA  
1,830 SQ.FT.

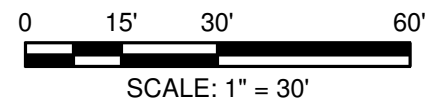
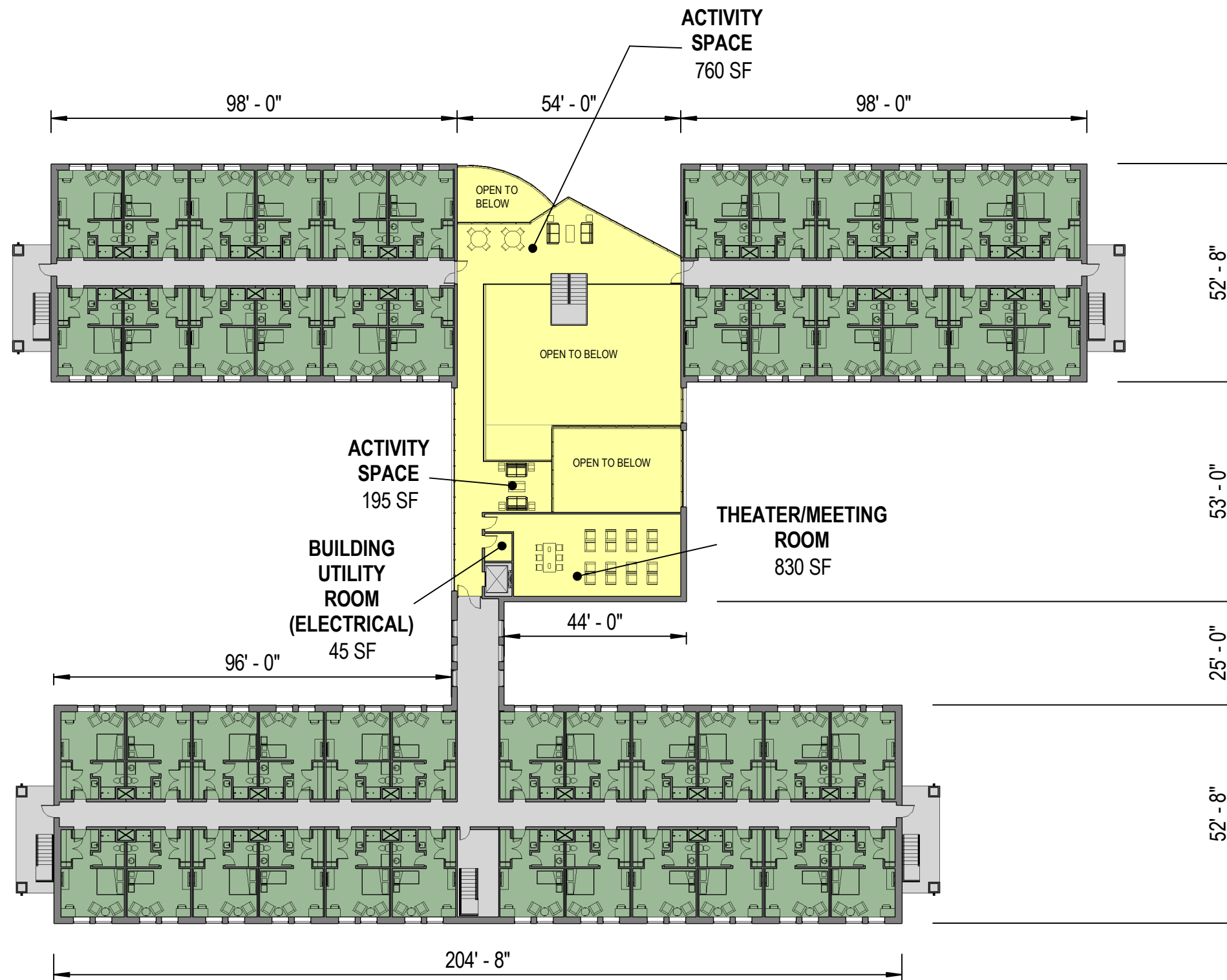
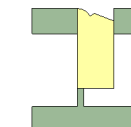
MODULE C CIRCULATION  
170 SQ.FT.

MODULE D DORMITORY  
13,440 SQ.FT.

MODULE D CIRCULATION  
4,665 SQ.FT.

TOTAL FACILITY GROSS FLOOR AREA (H-SHAPE):  
78,835 SQ.FT.

KEYPLAN



**GENERAL NOTES - STANDARD DESIGN PLAN:**  
THIS BASIS OF DESIGN CONCEPT FLOOR PLAN IS BASED ON THE APPROVED FUNCTIONAL ADJACENCY DIAGRAM. THE ROOM CRITERIA IS LOCATED IN THE ROOM DATA SHEETS IN THE STANDARD DESIGN DOCUMENT AND THE ROOM SIZES ARE LOCATED IN THE INTERACTIVE PROGRAMMING WORKSHEET. THE OVERALL DIMENSIONS ARE APPROXIMATE AS THE BASIS OF DESIGN CONCEPT PLAN DOES NOT INDICATE STRUCTURAL ELEMENTS, ALL PLUMBING CHASES, MISCELLANEOUS UTILITY ROOMS (MECHANICAL, ELECTRICAL, COMMUNICATIONS) OR WALL THICKNESSES, ETC.

PHASE:	FINAL
DATE:	JANUARY 2019
SCALE:	AS INDICATED

**AIR FORCE  
CIVIL ENGINEER  
CENTER**

CIVIL ENGINEER SQUADRON:  
PERMANENT PARTY ENLISTED DORMITORY  
ANY AFB, CONUS

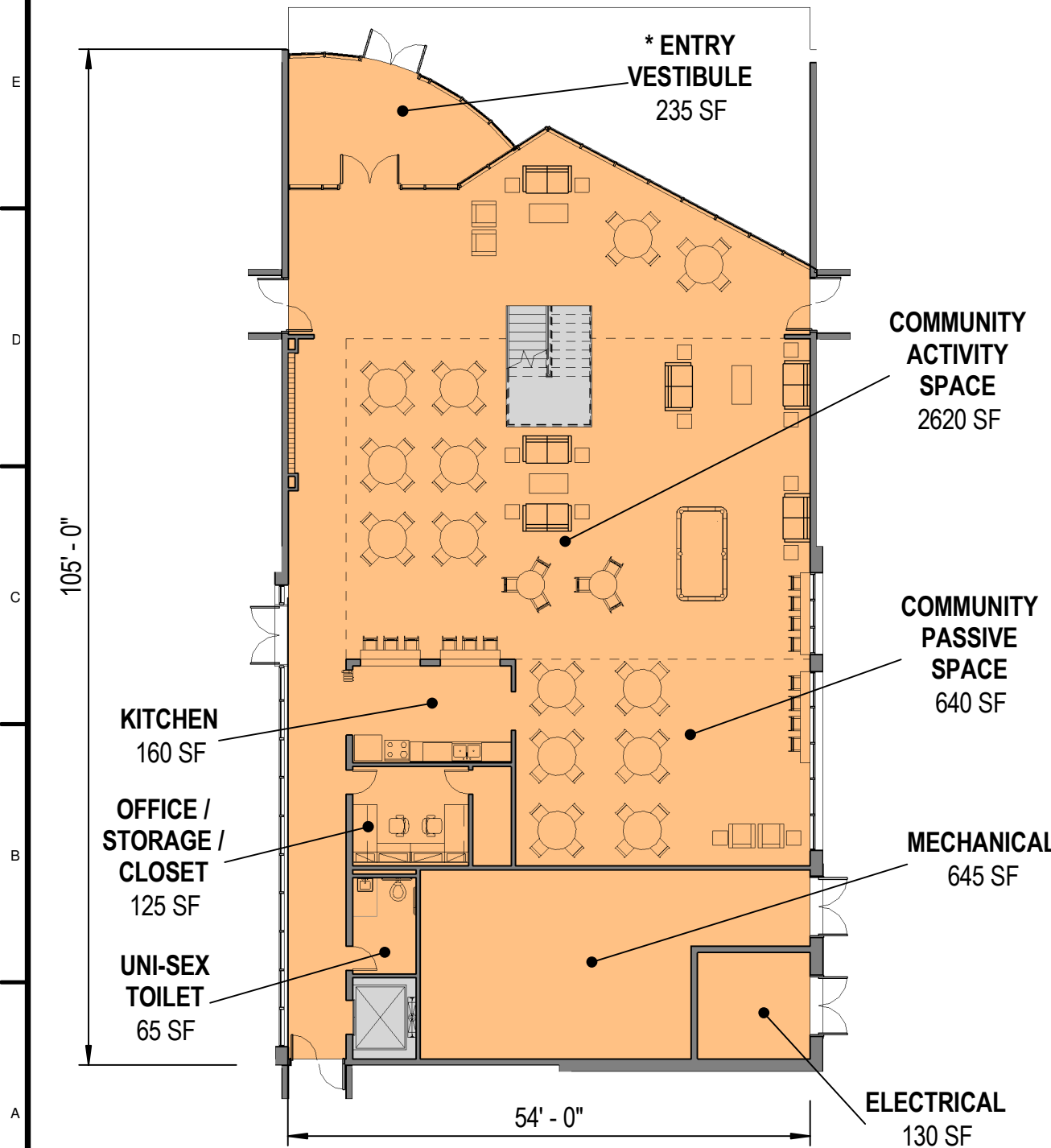
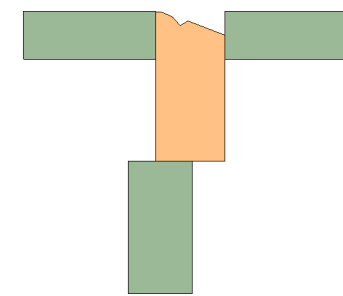
**THIRD FLOOR PLAN  
H - SHAPE**

SHEET NUMBER  
**A-9**

MODULE TYPE LEGEND

- A - FIRST FLOOR COMMON AREA  
GROSS AREA 4,620 SQ.FT.
- CIRCULATION 170 SQ.FT.

KEYPLAN

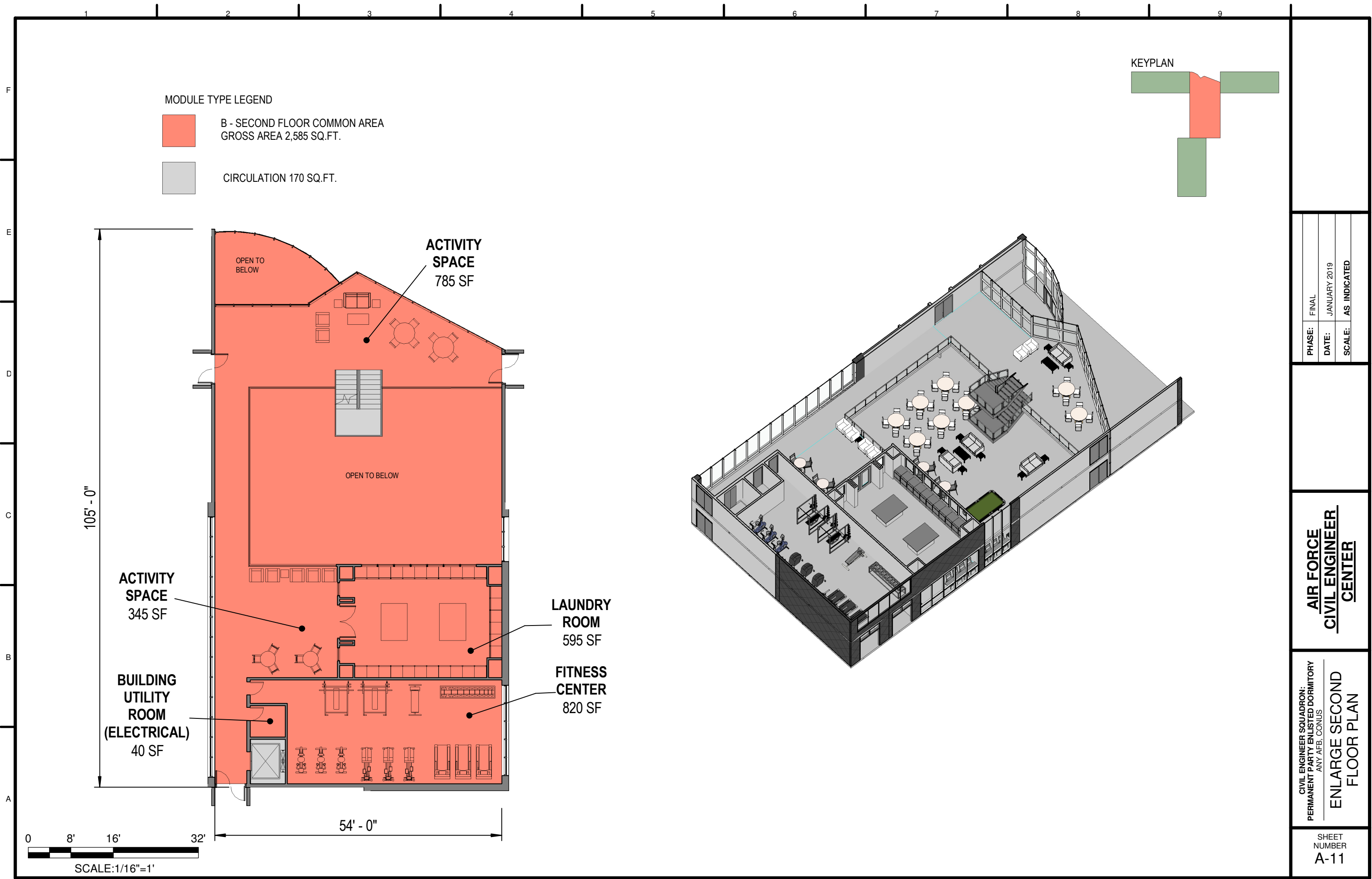


PHASE:	FINAL
DATE:	JANUARY 2019
SCALE:	AS INDICATED

**AIR FORCE  
CIVIL ENGINEER  
CENTER**

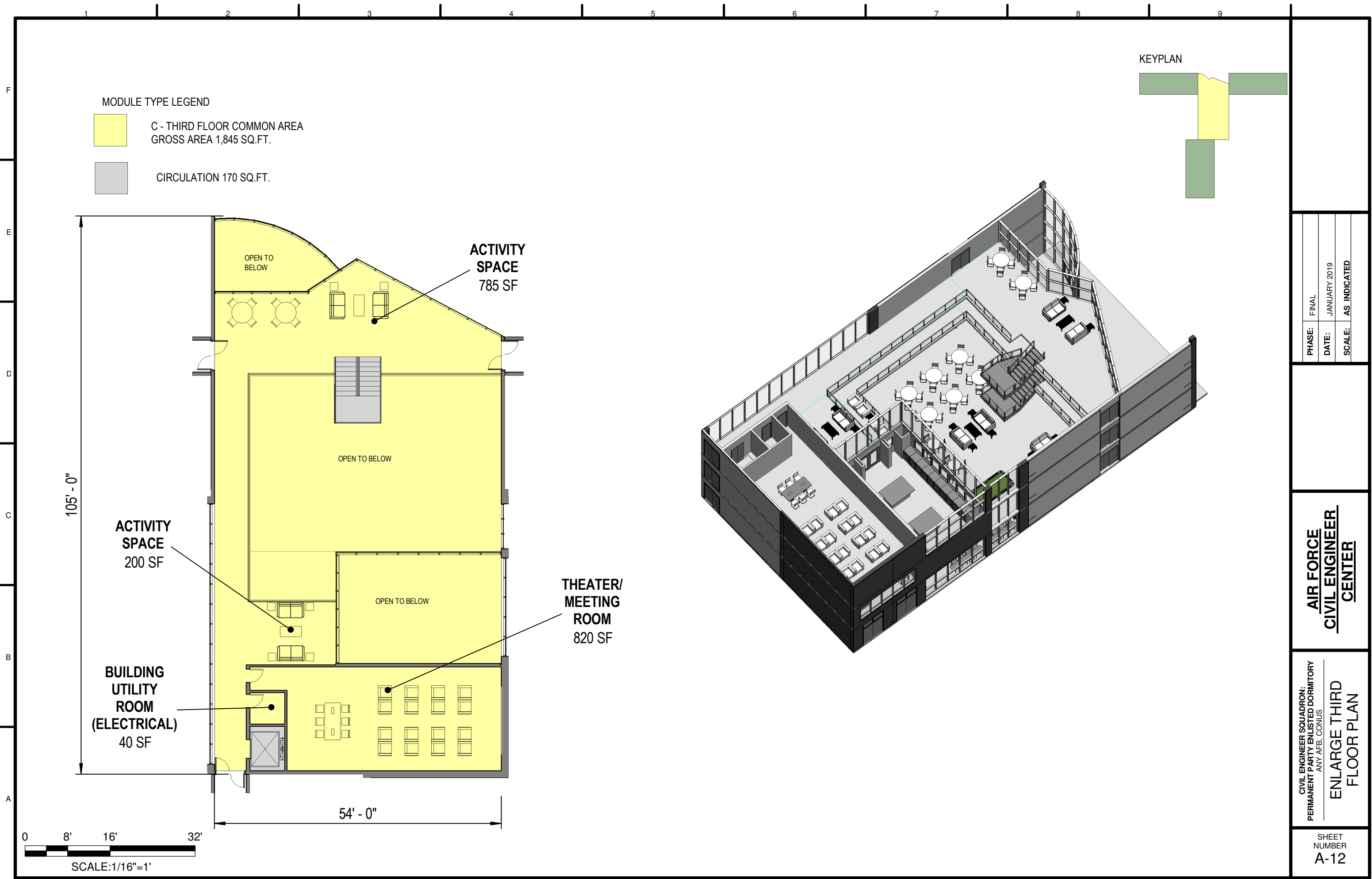
CIVIL ENGINEER SQUADRON:  
PERMANENT PARTY ENLISTED DORMITORY  
ANY AFB, CONUS  
**ENLARGE FIRST  
FLOOR PLAN**

SHEET  
NUMBER  
**A-10**



NOT FOR CONSTRUCTION

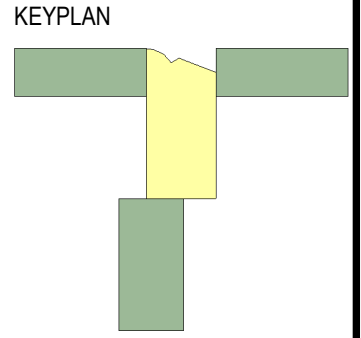




**MODULE TYPE LEGEND**

C - THIRD FLOOR COMMON AREA  
GROSS AREA 1,845 SQ.FT.

CIRCULATION 170 SQ.FT.



PHASE:	FINAL
DATE:	JANUARY 2019
SCALE:	AS INDICATED

**AIR FORCE  
CIVIL ENGINEER  
CENTER**

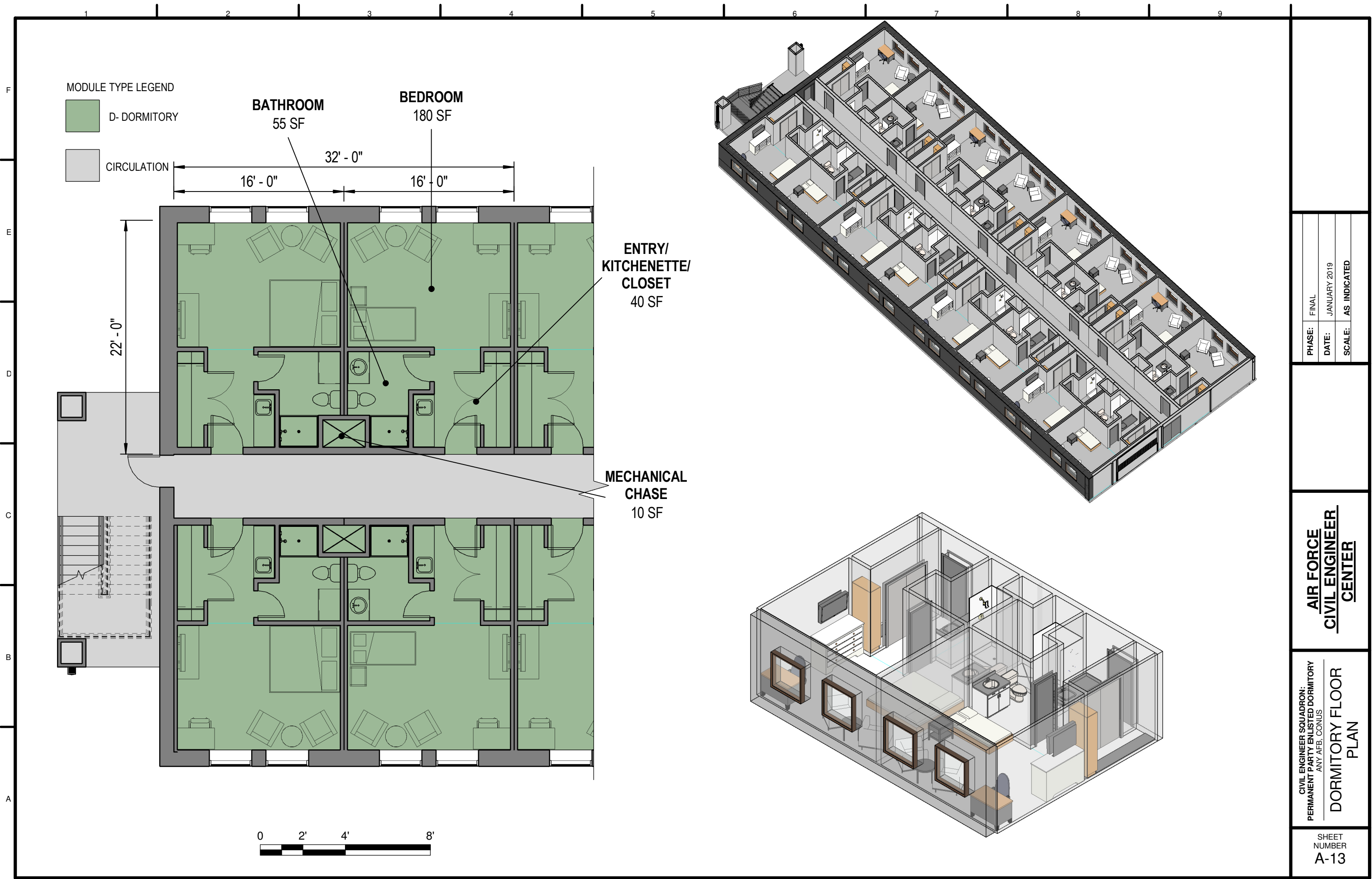
CIVIL ENGINEER SQUADRON:  
PERMANENT PARTY ENLISTED DORMITORY  
ANY AFB, CONUS

**ENLARGE THIRD  
FLOOR PLAN**

SHEET  
NUMBER  
**A-12**

NOT FOR CONSTRUCTION





MODULE TYPE LEGEND

- D- DORMITORY
- CIRCULATION

**BATHROOM**  
55 SF

**BEDROOM**  
180 SF

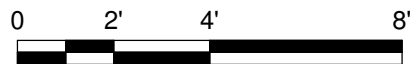
32' - 0"

16' - 0"      16' - 0"

22' - 0"

**ENTRY/  
KITCHENETTE/  
CLOSET**  
40 SF

**MECHANICAL  
CHASE**  
10 SF



PHASE:	FINAL
DATE:	JANUARY 2019
SCALE:	AS INDICATED

**AIR FORCE  
CIVIL ENGINEER  
CENTER**

CIVIL ENGINEER SQUADRON:  
PERMANENT PARTY ENLISTED DORMITORY  
ANY AFB, CONUS

**DORMITORY FLOOR  
PLAN**

SHEET  
NUMBER  
**A-13**