

GENERAL NOTES

1. USE THESE DOCUMENTS IN CONJUNCTION WITH THE STANDARD DESIGN GUIDE AND INTERACTIVE PROGRAMMING WORKSHEET.

DRAWING LIST	
NUMBER	NAME
C-1	COVER SHEET
A-1	STANDARD DESIGN PLAN - 1 BAY
A-2	STANDARD DESIGN PLAN - 2 BAY
A-3	MODULES A & B PLANS & AXONS
A-4	2 BAY-MODULES A & B PLANS & AXONS
A-5	MODULES C & D PLANS & AXONS
A-6	MODULES E & F PLANS & AXONS

AIR FORCE STANDARD DESIGN FLIGHT SIMULATOR 1 & 2 BAY FACILITY



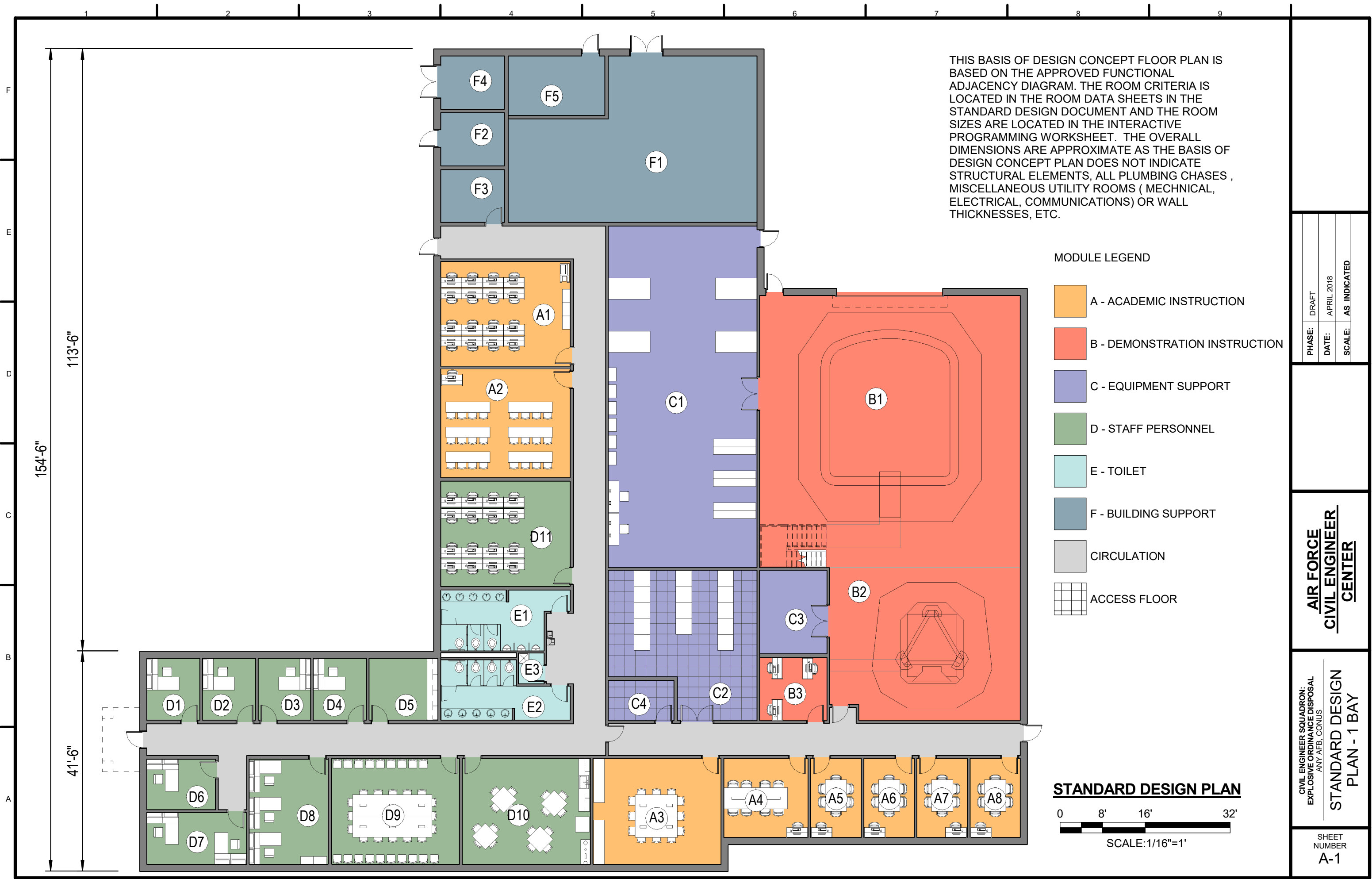
PHASE: DRAFT
DATE: APRIL 2018
SCALE: AS INDICATED

AIR FORCE
CIVIL ENGINEER
CENTER

CIVIL ENGINEER SQUADRON:
EXPLOSIVE ORDNANCE DISPOSAL
ANY AFB, CONUS
COVER SHEET

DRAFT
APRIL 2018

SHEET
NUMBER
C-1



THIS BASIS OF DESIGN CONCEPT FLOOR PLAN IS BASED ON THE APPROVED FUNCTIONAL ADJACENCY DIAGRAM. THE ROOM CRITERIA IS LOCATED IN THE ROOM DATA SHEETS IN THE STANDARD DESIGN DOCUMENT AND THE ROOM SIZES ARE LOCATED IN THE INTERACTIVE PROGRAMMING WORKSHEET. THE OVERALL DIMENSIONS ARE APPROXIMATE AS THE BASIS OF DESIGN CONCEPT PLAN DOES NOT INDICATE STRUCTURAL ELEMENTS, ALL PLUMBING CHASES, MISCELLANEOUS UTILITY ROOMS (MECHANICAL, ELECTRICAL, COMMUNICATIONS) OR WALL THICKNESSES, ETC.

MODULE LEGEND

- A - ACADEMIC INSTRUCTION
- B - DEMONSTRATION INSTRUCTION
- C - EQUIPMENT SUPPORT
- D - STAFF PERSONNEL
- E - TOILET
- F - BUILDING SUPPORT
- CIRCULATION
- ACCESS FLOOR

STANDARD DESIGN PLAN

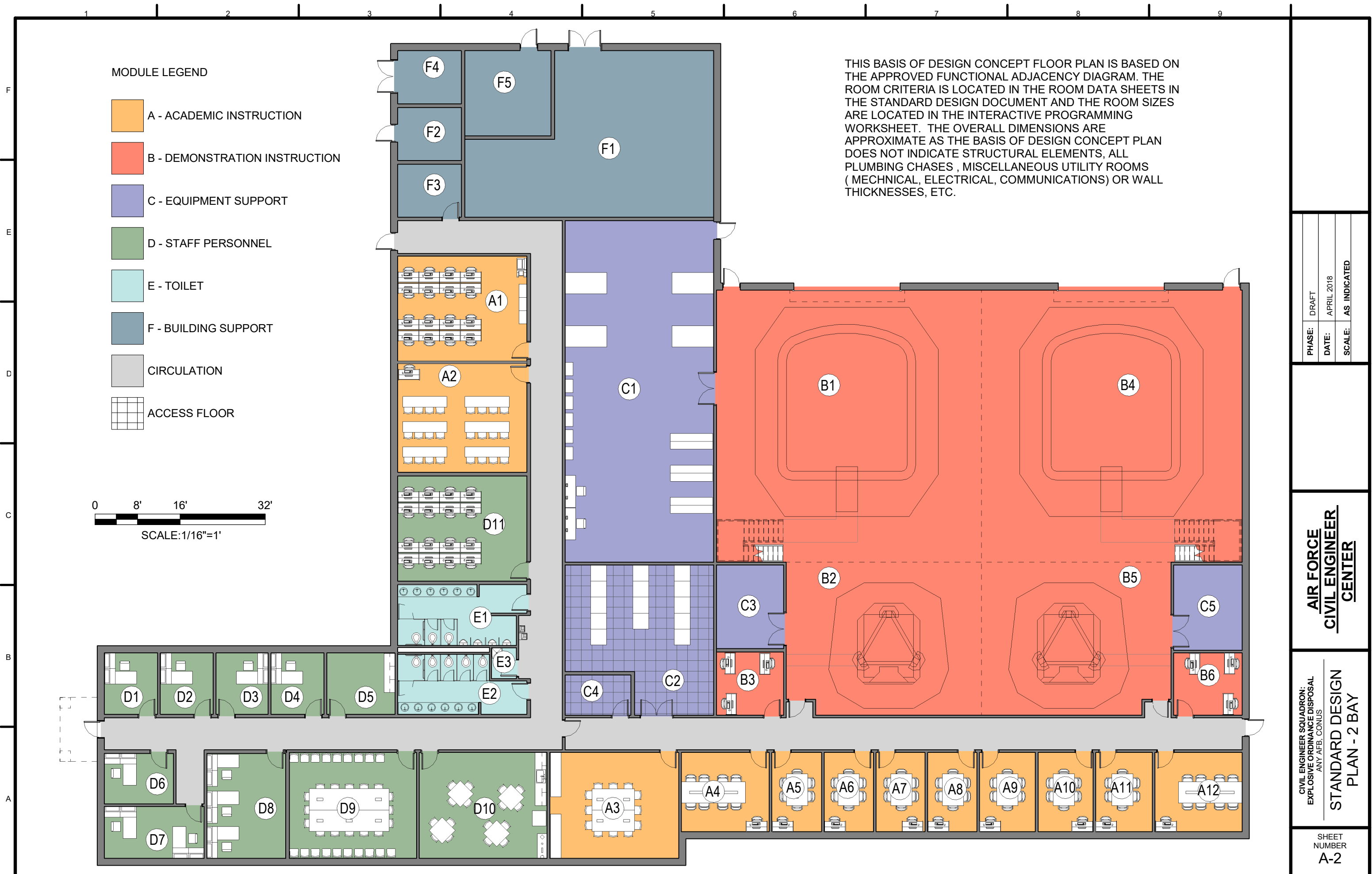


PHASE:	DRAFT
DATE:	APRIL 2018
SCALE:	AS INDICATED

**AIR FORCE
CIVIL ENGINEER
CENTER**

CIVIL ENGINEER SQUADRON:
EXPLOSIVE ORDNANCE DISPOSAL
ANY AFB, CONUS
**STANDARD DESIGN
PLAN - 1 BAY**

SHEET
NUMBER
A-1



MODULE LEGEND

- A - ACADEMIC INSTRUCTION
- B - DEMONSTRATION INSTRUCTION
- C - EQUIPMENT SUPPORT
- D - STAFF PERSONNEL
- E - TOILET
- F - BUILDING SUPPORT
- CIRCULATION
- ACCESS FLOOR



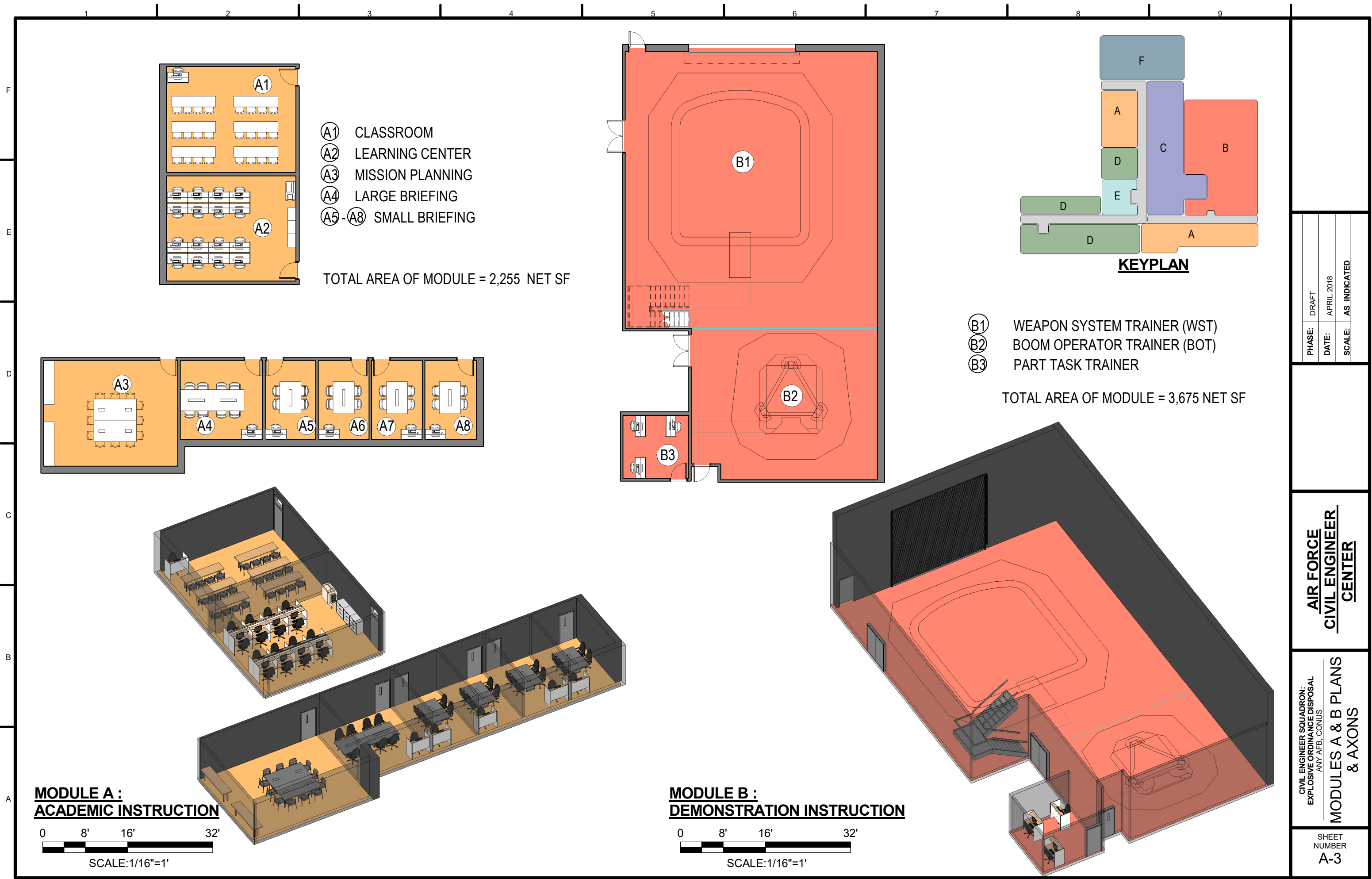
THIS BASIS OF DESIGN CONCEPT FLOOR PLAN IS BASED ON THE APPROVED FUNCTIONAL ADJACENCY DIAGRAM. THE ROOM CRITERIA IS LOCATED IN THE ROOM DATA SHEETS IN THE STANDARD DESIGN DOCUMENT AND THE ROOM SIZES ARE LOCATED IN THE INTERACTIVE PROGRAMMING WORKSHEET. THE OVERALL DIMENSIONS ARE APPROXIMATE AS THE BASIS OF DESIGN CONCEPT PLAN DOES NOT INDICATE STRUCTURAL ELEMENTS, ALL PLUMBING CHASES, MISCELLANEOUS UTILITY ROOMS (MECHANICAL, ELECTRICAL, COMMUNICATIONS) OR WALL THICKNESSES, ETC.

PHASE:	DRAFT
DATE:	APRIL 2018
SCALE:	AS INDICATED

**AIR FORCE
CIVIL ENGINEER
CENTER**

CIVIL ENGINEER SQUADRON:
EXPLOSIVE ORDNANCE DISPOSAL
ANY AFB, CONUS
**STANDARD DESIGN
PLAN - 2 BAY**

SHEET NUMBER
A-2

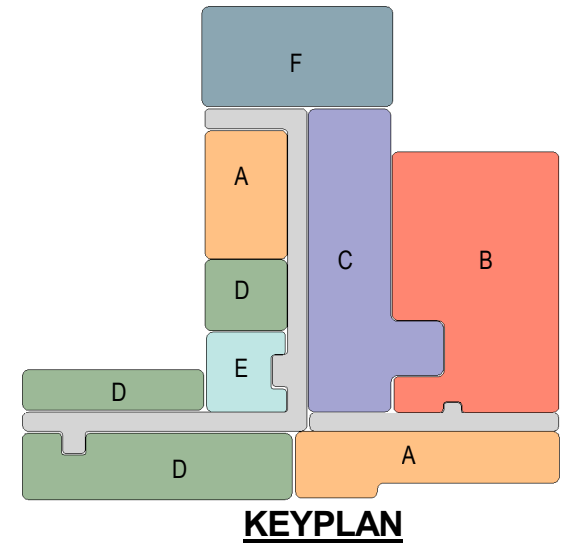


- Ⓐ CLASSROOM
- Ⓑ LEARNING CENTER
- Ⓒ MISSION PLANNING
- Ⓓ LARGE BRIEFING
- Ⓔ-Ⓕ SMALL BRIEFING

TOTAL AREA OF MODULE = 2,255 NET SF

- ⓑ WEAPON SYSTEM TRAINER (WST)
- Ⓒ BOOM OPERATOR TRAINER (BOT)
- Ⓓ PART TASK TRAINER

TOTAL AREA OF MODULE = 3,675 NET SF



PHASE:	DRAFT
DATE:	APRIL 2018
SCALE:	AS INDICATED

**AIR FORCE
CIVIL ENGINEER
CENTER**

**CIVIL ENGINEER SQUADRON:
EXPLOSIVE ORDNANCE DISPOSAL
ANY AFB, CONUS
MODULES A & B PLANS
& AXONS**

SHEET NUMBER
A-3

**MODULE A :
ACADEMIC INSTRUCTION**

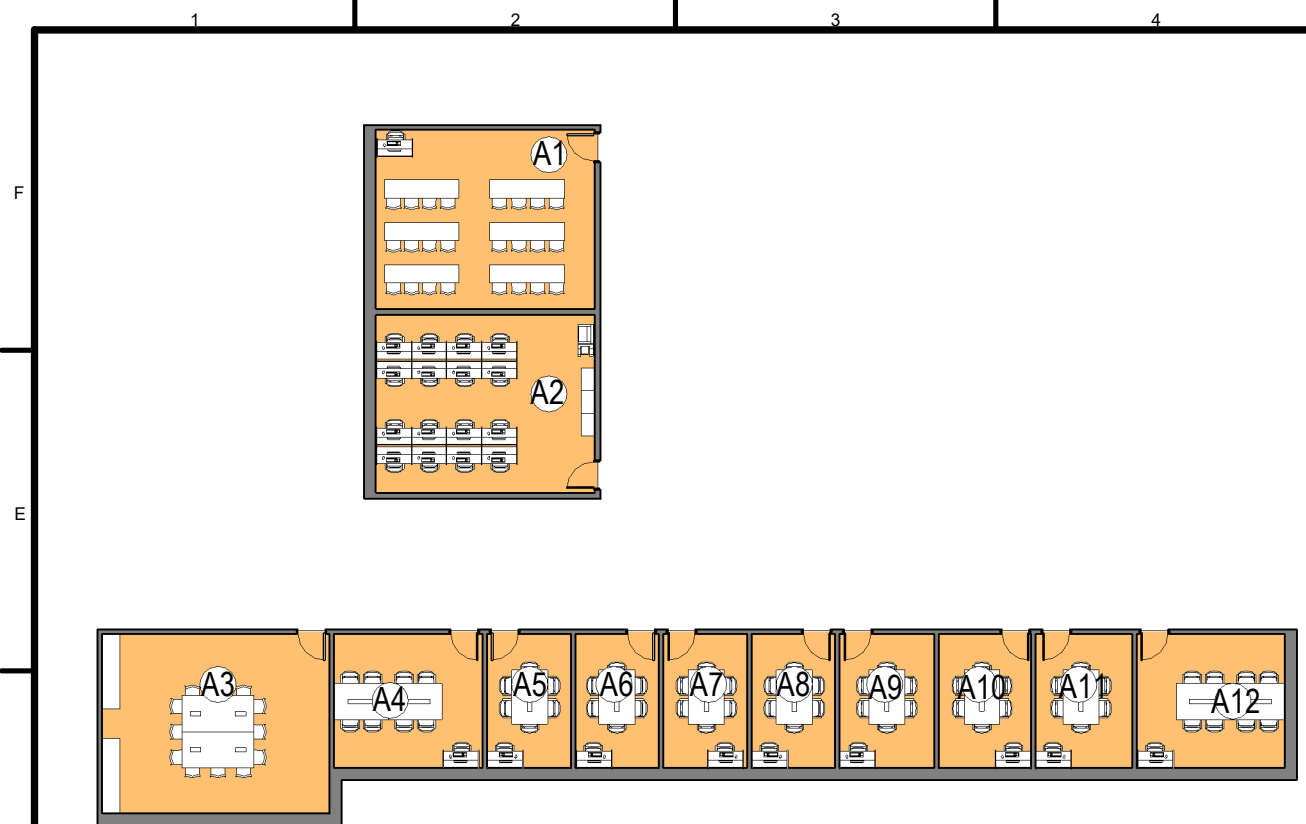
0 8' 16' 32'

SCALE: 1/16"=1'

**MODULE B :
DEMONSTRATION INSTRUCTION**

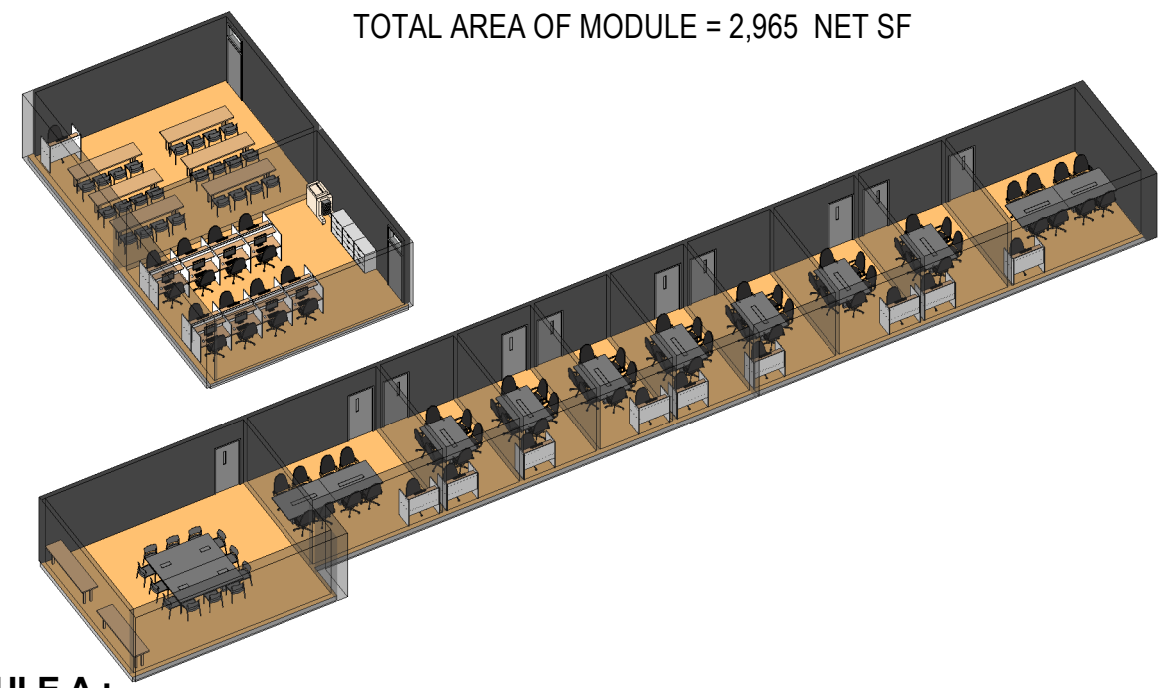
0 8' 16' 32'

SCALE: 1/16"=1'

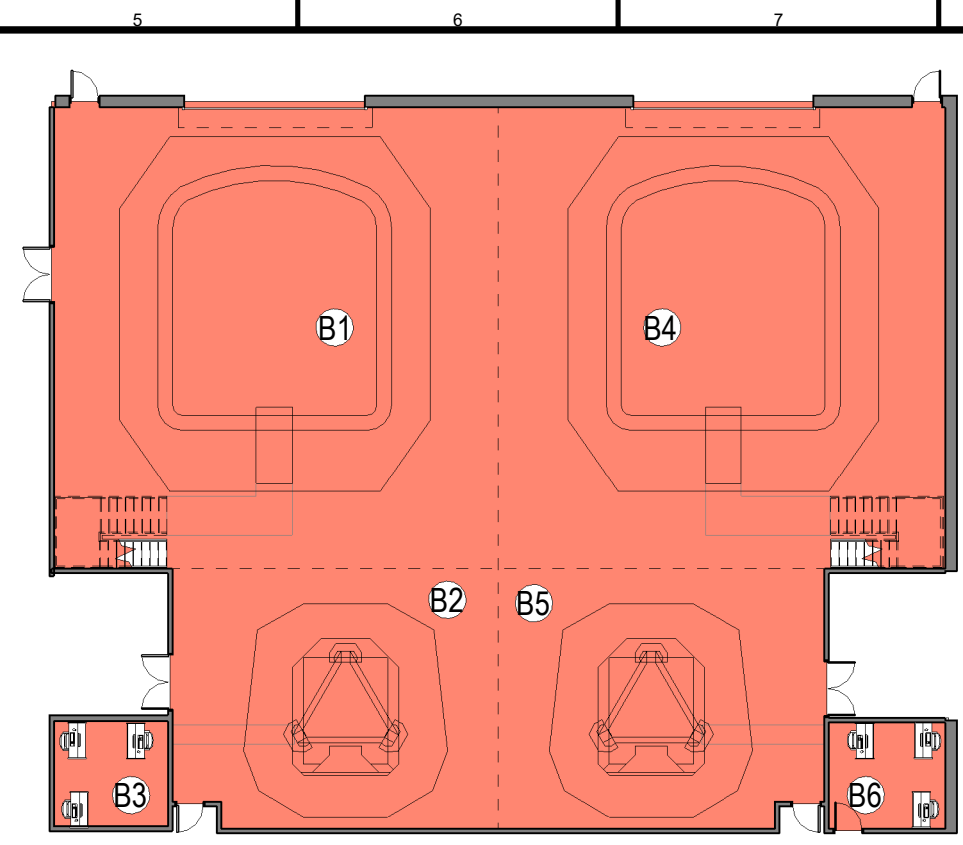
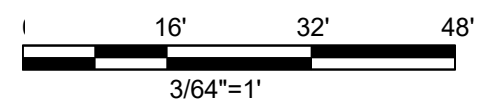


- (A1) CLASSROOM
- (A2) LEARNING CENTER
- (A3) MISSION PLANNING
- (A4 & A12) LARGE BRIEFING
- (A5 - A11) SMALL BRIEFING

TOTAL AREA OF MODULE = 2,965 NET SF

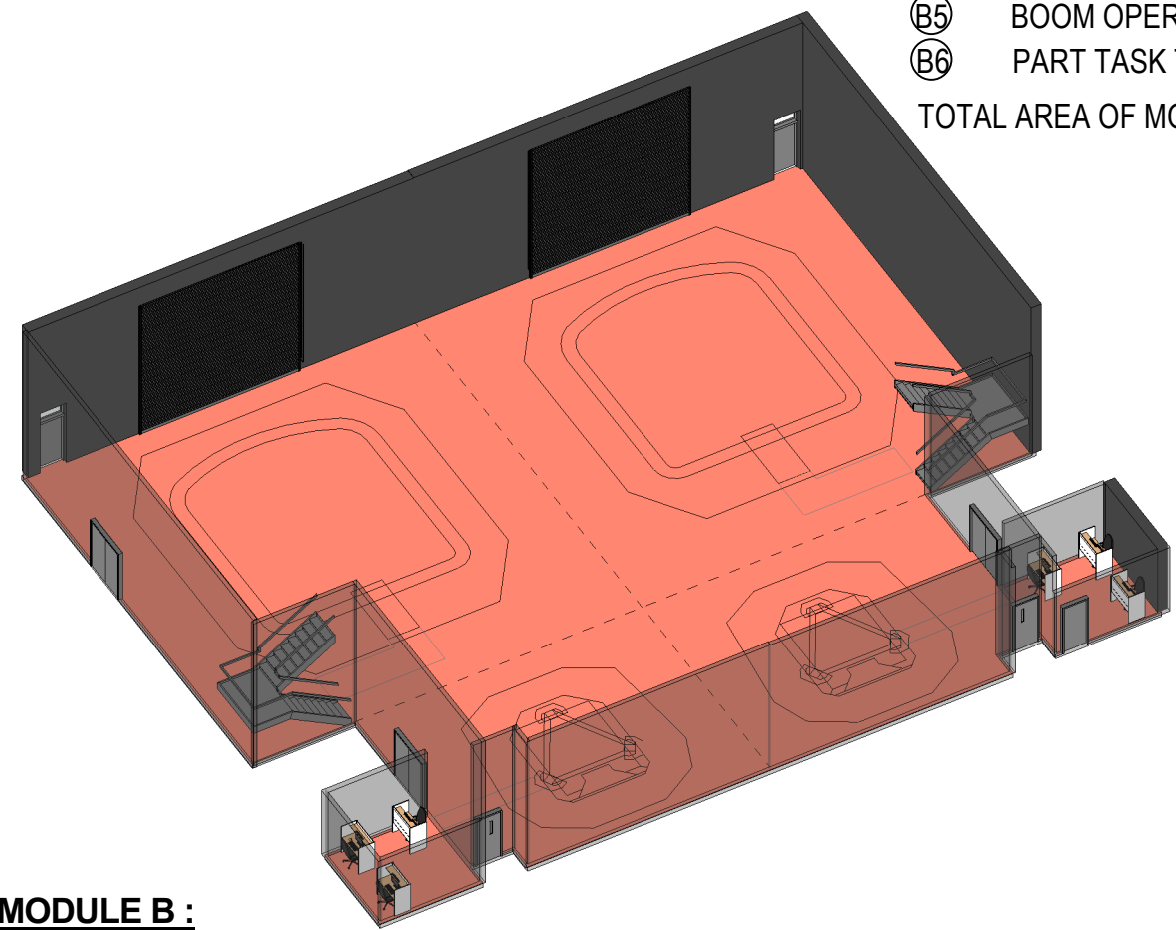


**MODULE A :
ACADEMIC INSTRUCTION (2 BAY)**

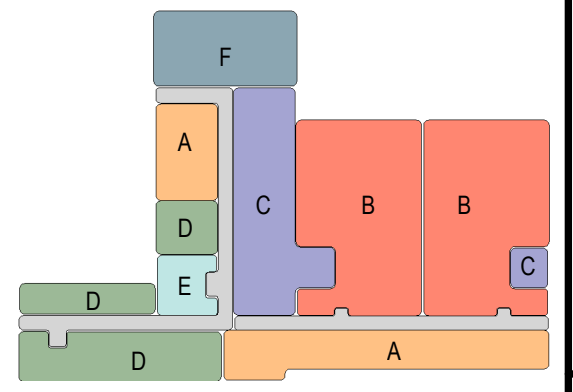
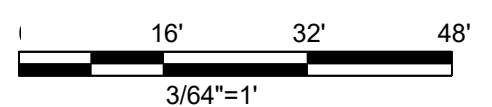


- (B1) WEAPON SYSTEM TRAINER (WST)
- (B2) BOOM OPERATOR TRAINER (BOT)
- (B3) PART TASK TRAINER
- (B4) WEAPON SYSTEM TRAINER (WST)
- (B5) BOOM OPERATOR TRAINER (BOT)
- (B6) PART TASK TRAINER

TOTAL AREA OF MODULE = 7,350 NET SF



**MODULE B :
DEMONSTRATION INSTRUCTION (2 BAY)**



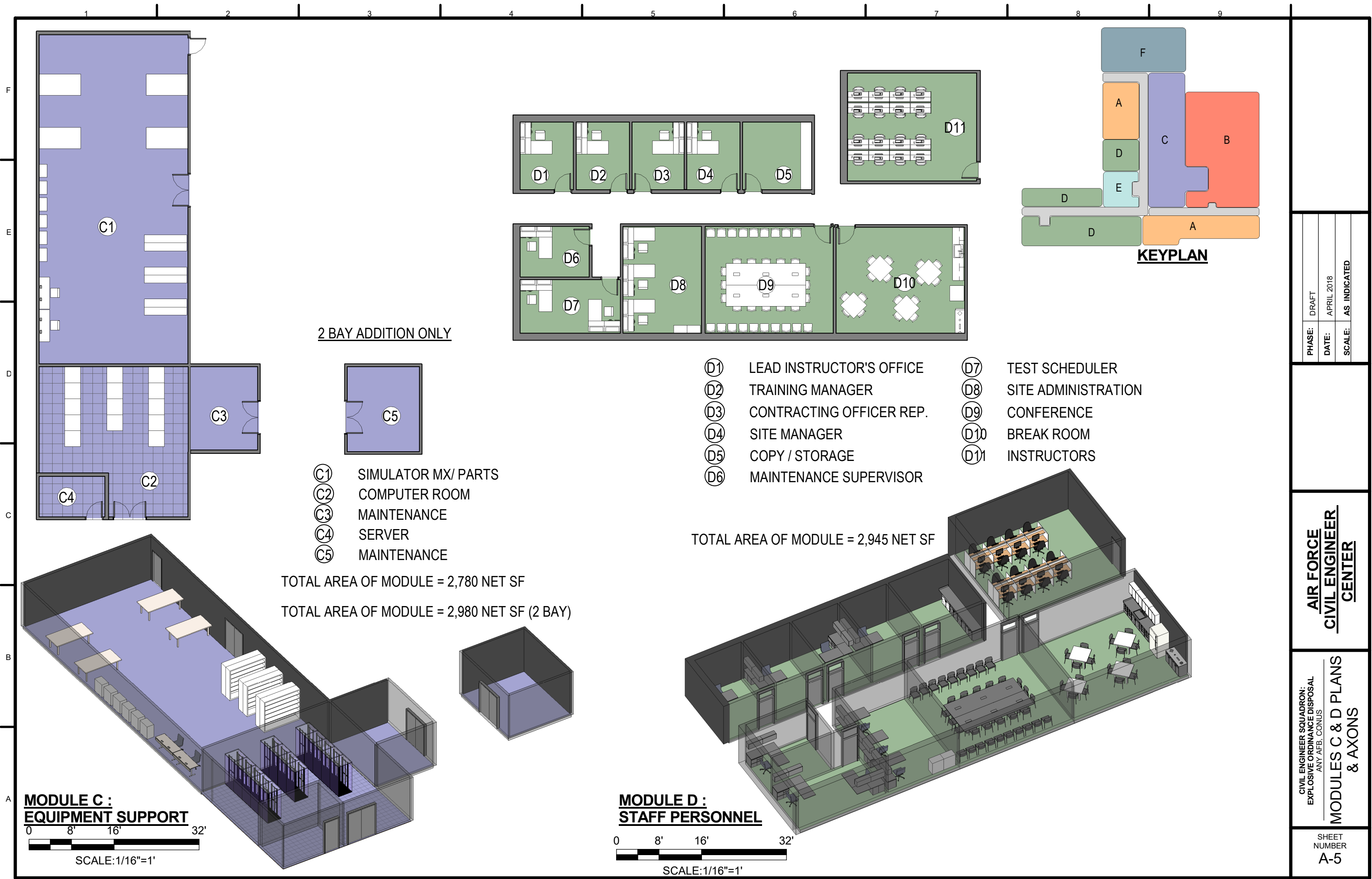
KEYPLAN - 2BAY

PHASE:	DRAFT
DATE:	APRIL 2018
SCALE:	AS INDICATED

**AIR FORCE
CIVIL ENGINEER
CENTER**

CIVIL ENGINEER SQUADRON:
EXPLOSIVE ORDNANCE DISPOSAL
ANY AFB, CONUS
**2 BAY-MODULES A & B
PLANS & AXONS**

SHEET
NUMBER
A-4



2 BAY ADDITION ONLY

- ⓐ C1 SIMULATOR MX/ PARTS
- ⓐ C2 COMPUTER ROOM
- ⓐ C3 MAINTENANCE
- ⓐ C4 SERVER
- ⓐ C5 MAINTENANCE

TOTAL AREA OF MODULE = 2,780 NET SF
 TOTAL AREA OF MODULE = 2,980 NET SF (2 BAY)

- ⓐ D1 LEAD INSTRUCTOR'S OFFICE
- ⓐ D2 TRAINING MANAGER
- ⓐ D3 CONTRACTING OFFICER REP.
- ⓐ D4 SITE MANAGER
- ⓐ D5 COPY / STORAGE
- ⓐ D6 MAINTENANCE SUPERVISOR
- ⓐ D7 TEST SCHEDULER
- ⓐ D8 SITE ADMINISTRATION
- ⓐ D9 CONFERENCE
- ⓐ D10 BREAK ROOM
- ⓐ D11 INSTRUCTORS

TOTAL AREA OF MODULE = 2,945 NET SF

MODULE C :
EQUIPMENT SUPPORT
 0 8' 16' 32'
 SCALE:1/16"=1'

MODULE D :
STAFF PERSONNEL
 0 8' 16' 32'
 SCALE:1/16"=1'

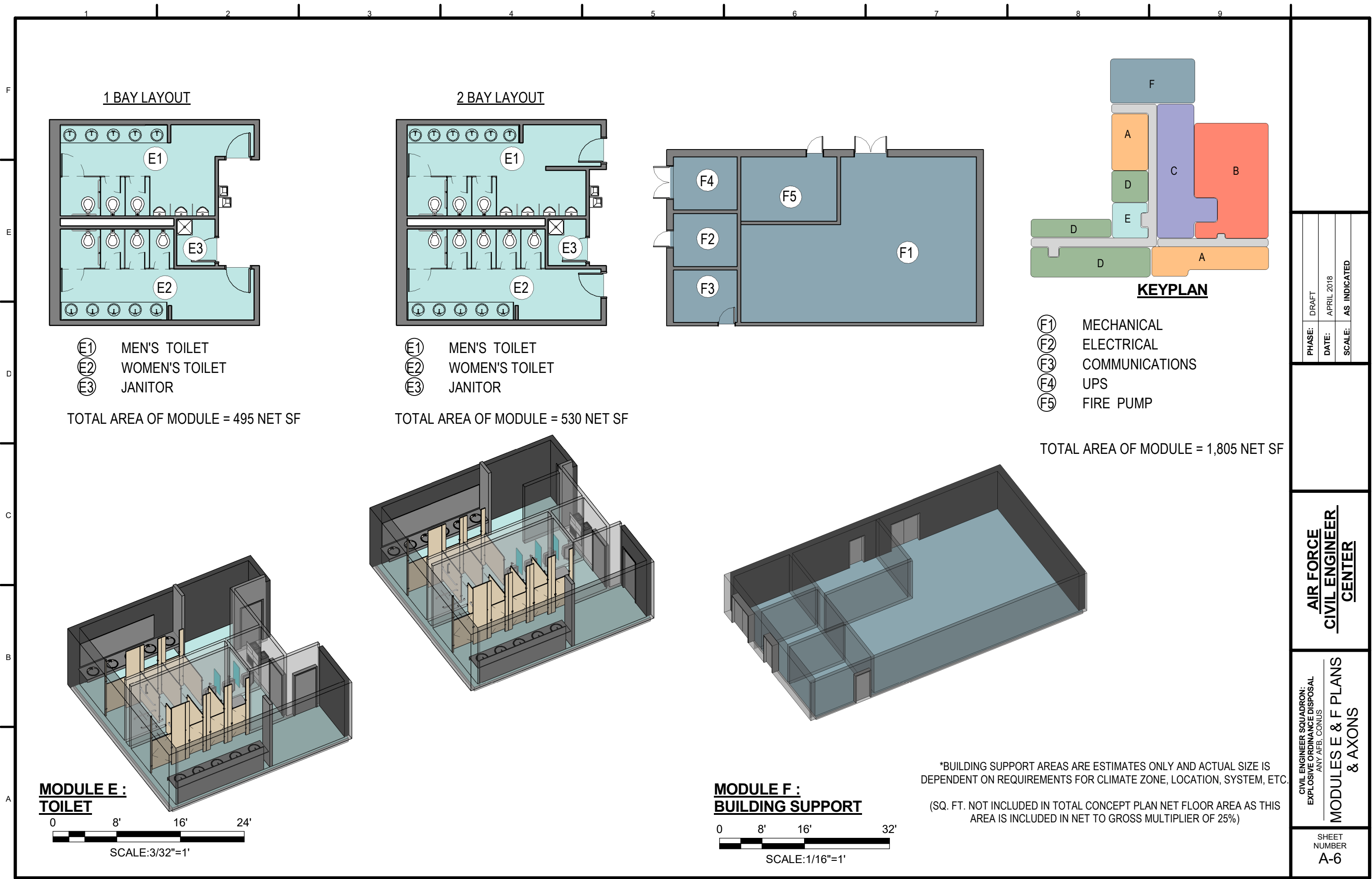
KEYPLAN

PHASE:	DRAFT
DATE:	APRIL 2018
SCALE:	AS INDICATED

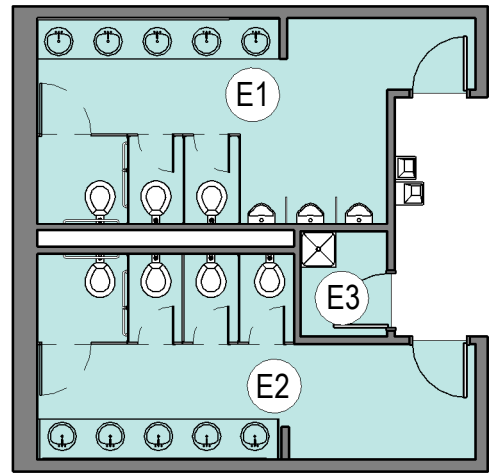
AIR FORCE
CIVIL ENGINEER
CENTER

CIVIL ENGINEER SQUADRON:
 EXPLOSIVE ORDNANCE DISPOSAL
 ANY AFB, CONUS
MODULES C & D PLANS
& AXONS

SHEET
 NUMBER
A-5



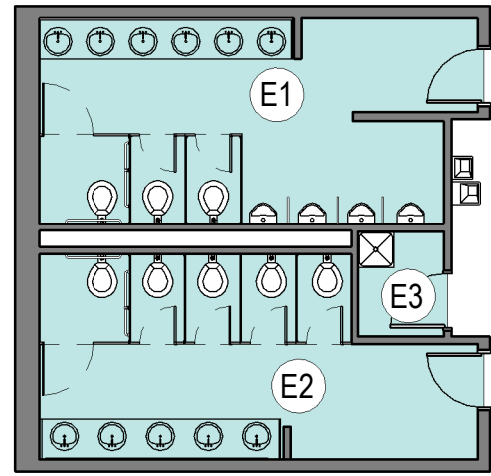
1 BAY LAYOUT



- (E1) MEN'S TOILET
- (E2) WOMEN'S TOILET
- (E3) JANITOR

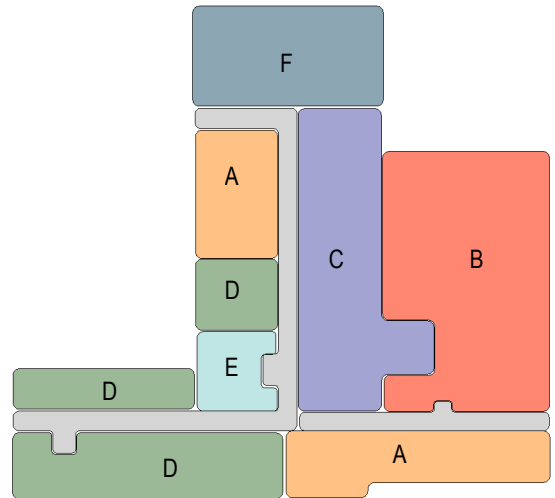
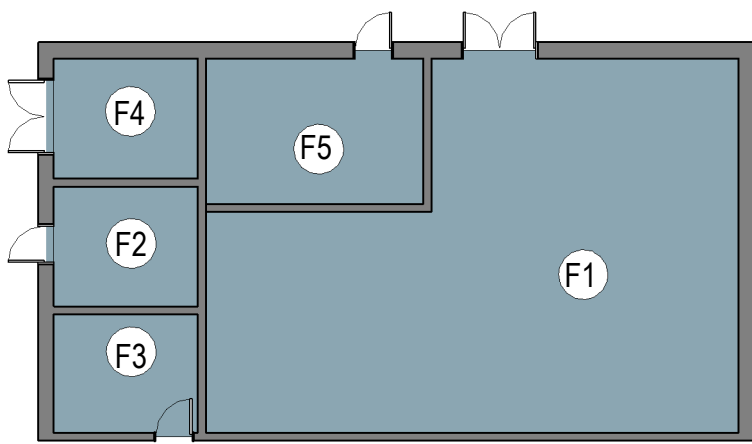
TOTAL AREA OF MODULE = 495 NET SF

2 BAY LAYOUT



- (E1) MEN'S TOILET
- (E2) WOMEN'S TOILET
- (E3) JANITOR

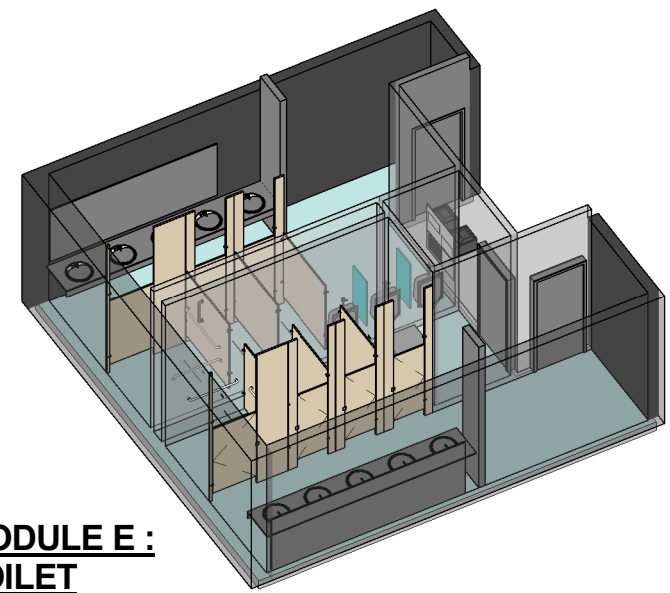
TOTAL AREA OF MODULE = 530 NET SF



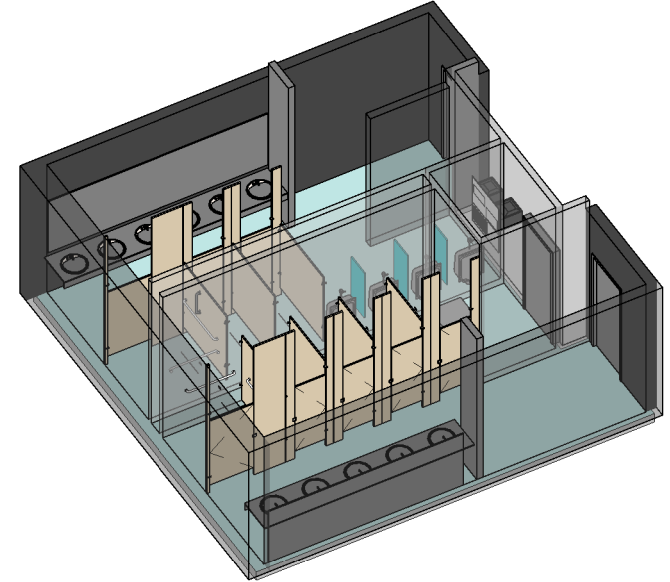
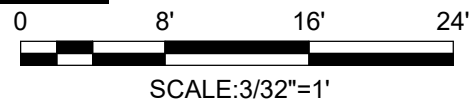
KEYPLAN

- (F1) MECHANICAL
- (F2) ELECTRICAL
- (F3) COMMUNICATIONS
- (F4) UPS
- (F5) FIRE PUMP

TOTAL AREA OF MODULE = 1,805 NET SF



**MODULE E :
TOILET**



**MODULE F :
BUILDING SUPPORT**



*BUILDING SUPPORT AREAS ARE ESTIMATES ONLY AND ACTUAL SIZE IS DEPENDENT ON REQUIREMENTS FOR CLIMATE ZONE, LOCATION, SYSTEM, ETC.
(SQ. FT. NOT INCLUDED IN TOTAL CONCEPT PLAN NET FLOOR AREA AS THIS AREA IS INCLUDED IN NET TO GROSS MULTIPLIER OF 25%)

PHASE:	DRAFT
DATE:	APRIL 2018
SCALE:	AS INDICATED

**AIR FORCE
CIVIL ENGINEER
CENTER**

**CIVIL ENGINEER SQUADRON:
EXPLOSIVE ORDNANCE DISPOSAL
ANY AFB, CONUS
MODULES E & F PLANS
& AXONS**

SHEET NUMBER
A-6