

**GENERAL NOTES**

**1. USE THESE DOCUMENTS IN CONJUNCTION WITH THE STANDARD DESIGN DOCUMENT AND THE INTERACTIVE PROGRAMMING WORKSHEET.**

| DRAWING LIST |                           |
|--------------|---------------------------|
| Sheet Number | NAME                      |
| C-1          | COVER SHEET               |
| A-1          | STANDARD DESIGN PLAN      |
| A-2          | MODULE A PLAN             |
| A-3          | MODULE A AXON             |
| A-4          | MODULES B & C PLAN & AXON |
| A-5          | MODULES D & E PLAN & AXON |
| A-6          | MODULES F & G PLAN & AXON |
| A-7          | MODULES H & J PLAN & AXON |
| A-8          | MODULES K & L PLAN & AXON |

# AIR FORCE STANDARD DESIGN RPA SQUADRON OPERATIONS



FINAL SUBMITTAL  
NOVEMBER 2017

PHASE: FINAL SUBMITTAL  
DATE: NOVEMBER 2017  
SCALE: AS INDICATED

AIR FORCE  
CIVIL ENGINEER  
CENTER

DYNAMIC PROTOTYPE DEVELOPMENT  
RPA WEAPONS SYSTEM FACILITY, CONUS  
COVER SHEET

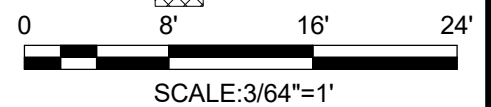
SHEET  
NUMBER  
C-1



THIS BASIS OF DESIGN CONCEPT FLOOR PLAN IS BASED ON THE APPROVED FUNCTIONAL ADJACENCY DIAGRAM. THE ROOM CRITERIA IS LOCATED IN THE ROOM DATA SHEETS IN THE STANDARD DESIGN DOCUMENT AND THE ROOM SIZES ARE LOCATED IN THE INTERACTIVE PROGRAMMING WORKSHEET. THE OVERALL DIMENSIONS ARE APPROXIMATE AS THE BASIS OF DESIGN CONCEPT PLAN DOES NOT INDICATE STRUCTURAL ELEMENTS, ALL PLUMBING CHASES, MISCELLANEOUS UTILITY ROOMS (MECHANICAL, ELECTRICAL, COMMUNICATIONS) OR WALL THICKNESSES, ETC.

**MODULE LEGEND**

- A-GCS/ GSC SOC SUPPORT
- D - COMMAND SUITE
- G - READY ROOM
- K-BUILDING SUPPORT
- L - GCS MOBIL COCKPIT UNITS
- CIRCULATION
- B - GCS COMMS MAINTENANCE
- E - SQUADRON OPERATIONS CENTER
- H - R & R
- J-TOILET / SHOWER/ LOCKER
- F - SERVER ROOM
- SECURE (SCIF) AREA
- ACCESS FLOOR UNITS



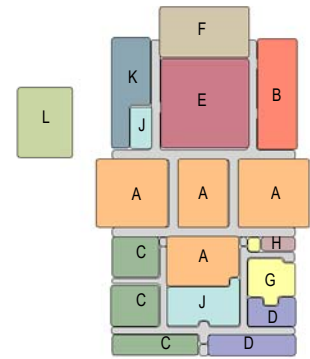
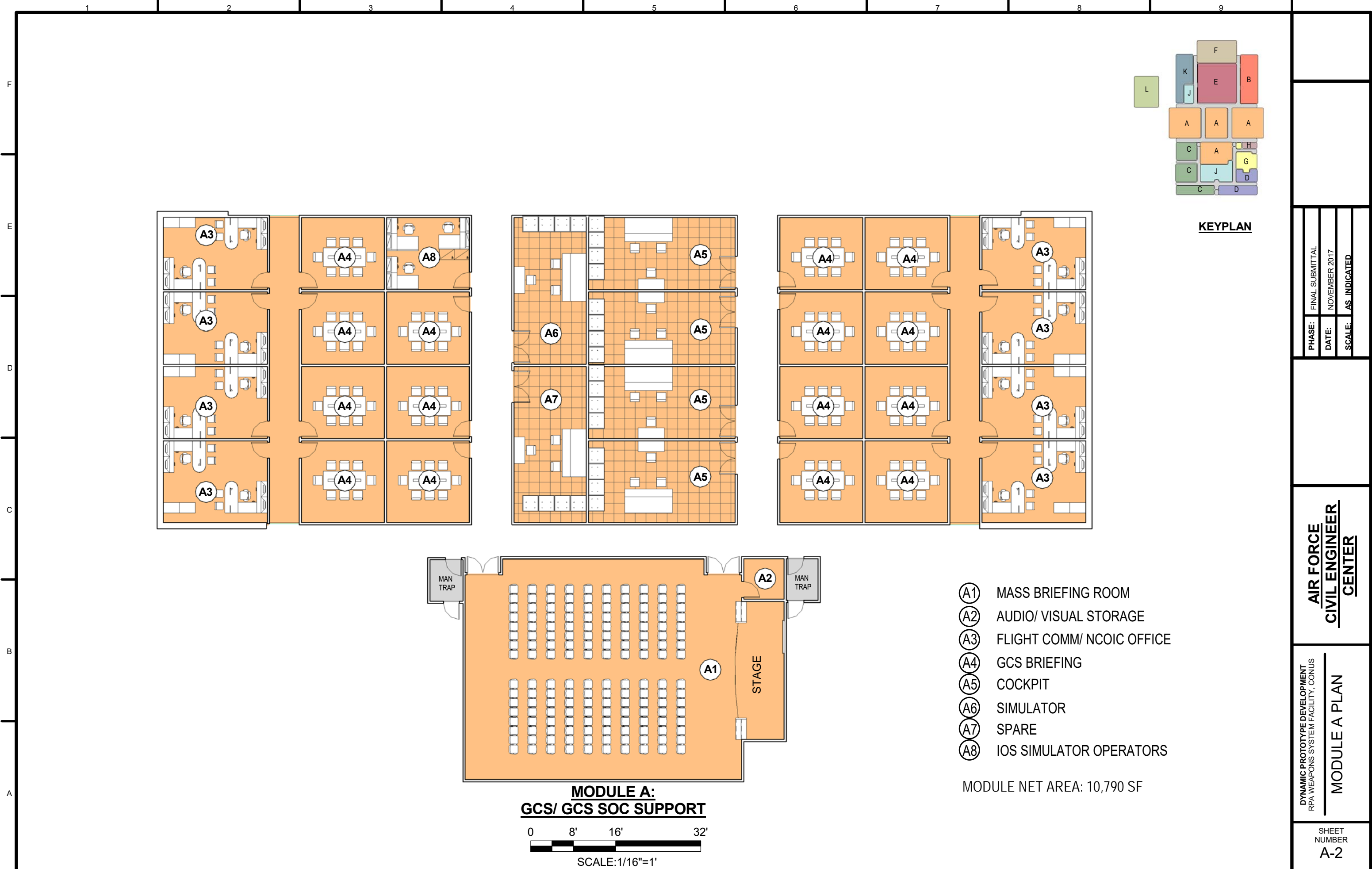
|        |                 |
|--------|-----------------|
| PHASE: | FINAL SUBMITTAL |
| DATE:  | NOVEMBER 2017   |
| SCALE: | AS INDICATED    |

**AIR FORCE  
CIVIL ENGINEER  
CENTER**

**DYNAMIC PROTOTYPE DEVELOPMENT  
RPA WEAPONS SYSTEM FACILITY, CONUS  
STANDARD DESIGN  
PLAN**

SHEET NUMBER  
**A-1**

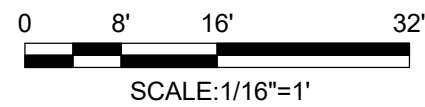
NOT FOR CONSTRUCTION



- (A1) MASS BRIEFING ROOM
- (A2) AUDIO/ VISUAL STORAGE
- (A3) FLIGHT COMM/ NCOIC OFFICE
- (A4) GCS BRIEFING
- (A5) COCKPIT
- (A6) SIMULATOR
- (A7) SPARE
- (A8) IOS SIMULATOR OPERATORS

MODULE NET AREA: 10,790 SF

**MODULE A:  
GCS/ GCS SOC SUPPORT**

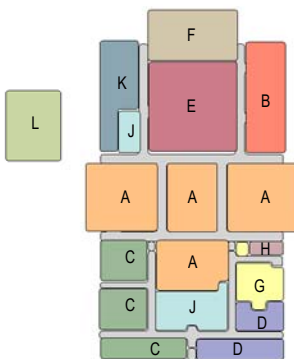
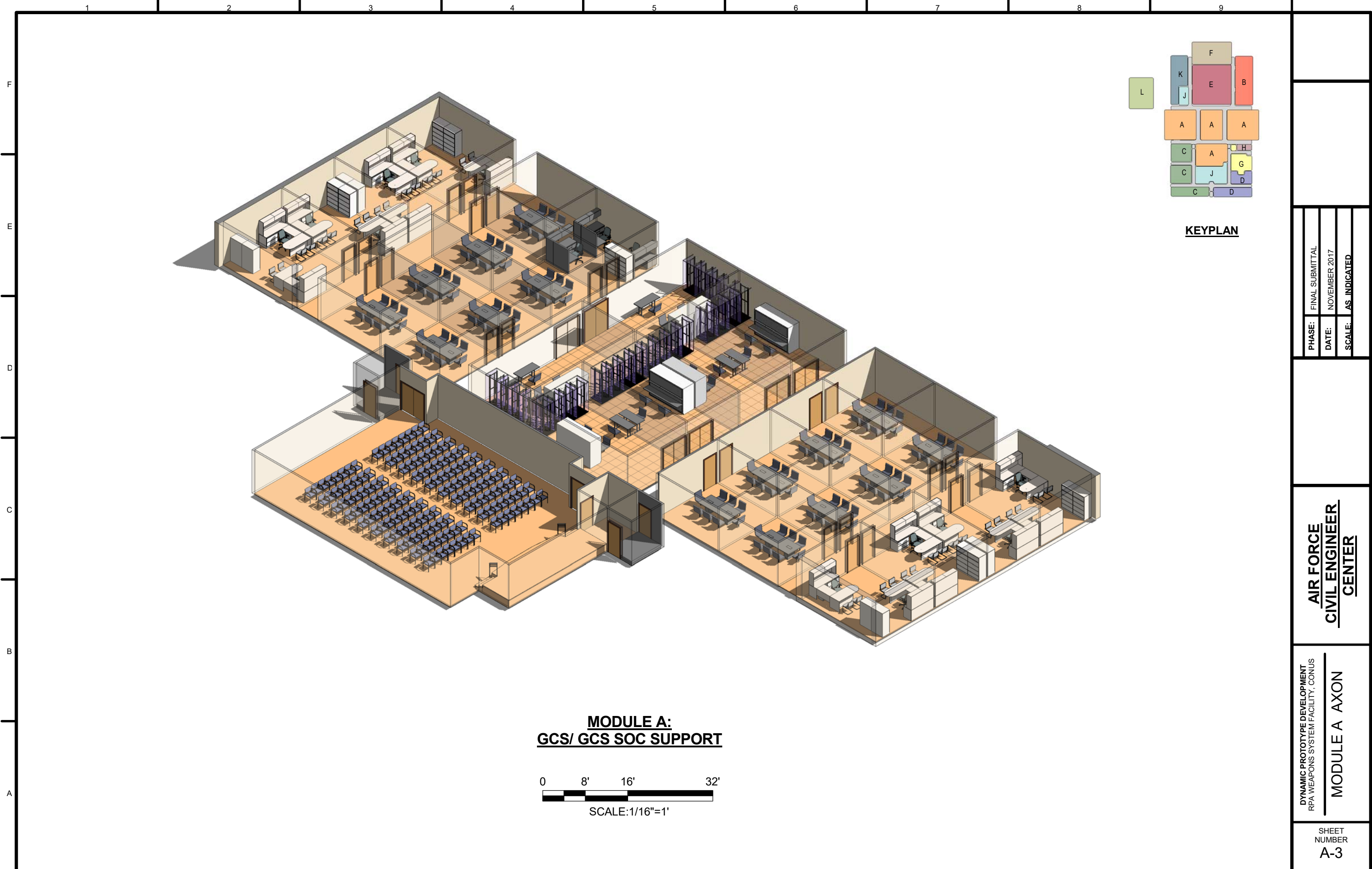


|        |                 |
|--------|-----------------|
| PHASE: | FINAL SUBMITTAL |
| DATE:  | NOVEMBER 2017   |
| SCALE: | AS INDICATED    |

**AIR FORCE  
CIVIL ENGINEER  
CENTER**

**DYNAMIC PROTOTYPE DEVELOPMENT  
RPA WEAPONS SYSTEM FACILITY, CONUS  
MODULE A PLAN**

SHEET NUMBER  
A-2



**KEYPLAN**

**MODULE A:  
GCS/ GCS SOC SUPPORT**

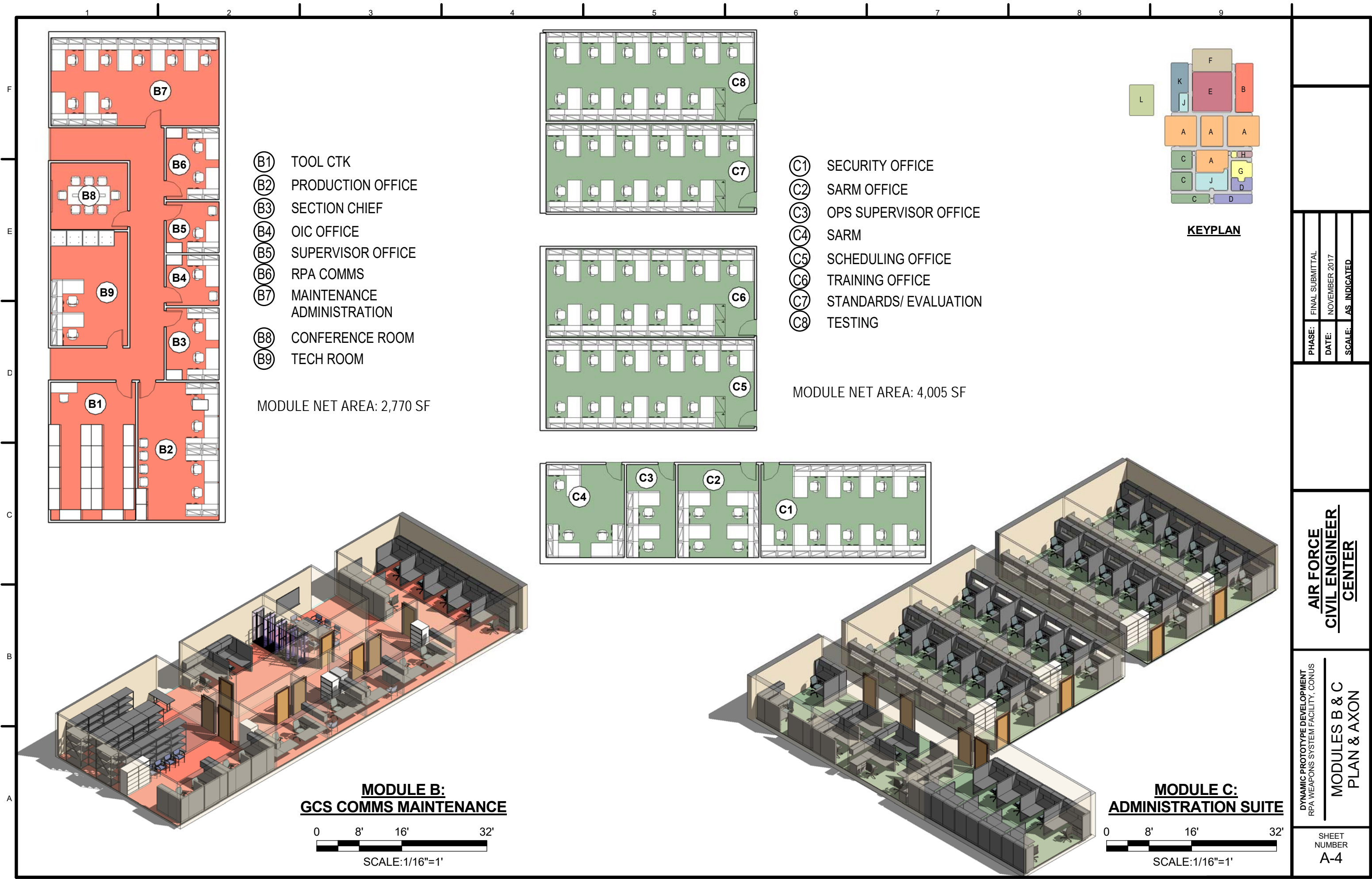


|        |                 |
|--------|-----------------|
| PHASE: | FINAL SUBMITTAL |
| DATE:  | NOVEMBER 2017   |
| SCALE: | AS INDICATED    |

**AIR FORCE  
CIVIL ENGINEER  
CENTER**

DYNAMIC PROTOTYPE DEVELOPMENT  
RPA WEAPONS SYSTEM FACILITY, CONUS  
**MODULE A AXON**

SHEET  
NUMBER  
**A-3**

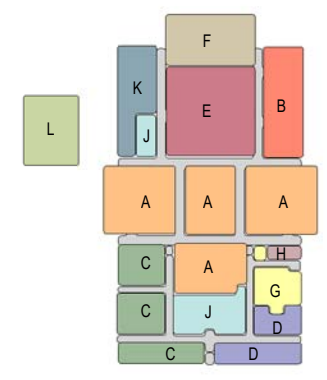


- (B1) TOOL CTK
- (B2) PRODUCTION OFFICE
- (B3) SECTION CHIEF
- (B4) OIC OFFICE
- (B5) SUPERVISOR OFFICE
- (B6) RPA COMMS
- (B7) MAINTENANCE ADMINISTRATION
- (B8) CONFERENCE ROOM
- (B9) TECH ROOM

MODULE NET AREA: 2,770 SF

- (C1) SECURITY OFFICE
- (C2) SARM OFFICE
- (C3) OPS SUPERVISOR OFFICE
- (C4) SARM
- (C5) SCHEDULING OFFICE
- (C6) TRAINING OFFICE
- (C7) STANDARDS/ EVALUATION
- (C8) TESTING

MODULE NET AREA: 4,005 SF



**KEYPLAN**

|        |                 |
|--------|-----------------|
| PHASE: | FINAL SUBMITTAL |
| DATE:  | NOVEMBER 2017   |
| SCALE: | AS INDICATED    |

**MODULE B:  
GCS COMMS MAINTENANCE**

0 8' 16' 32'

SCALE: 1/16"=1'

**MODULE C:  
ADMINISTRATION SUITE**

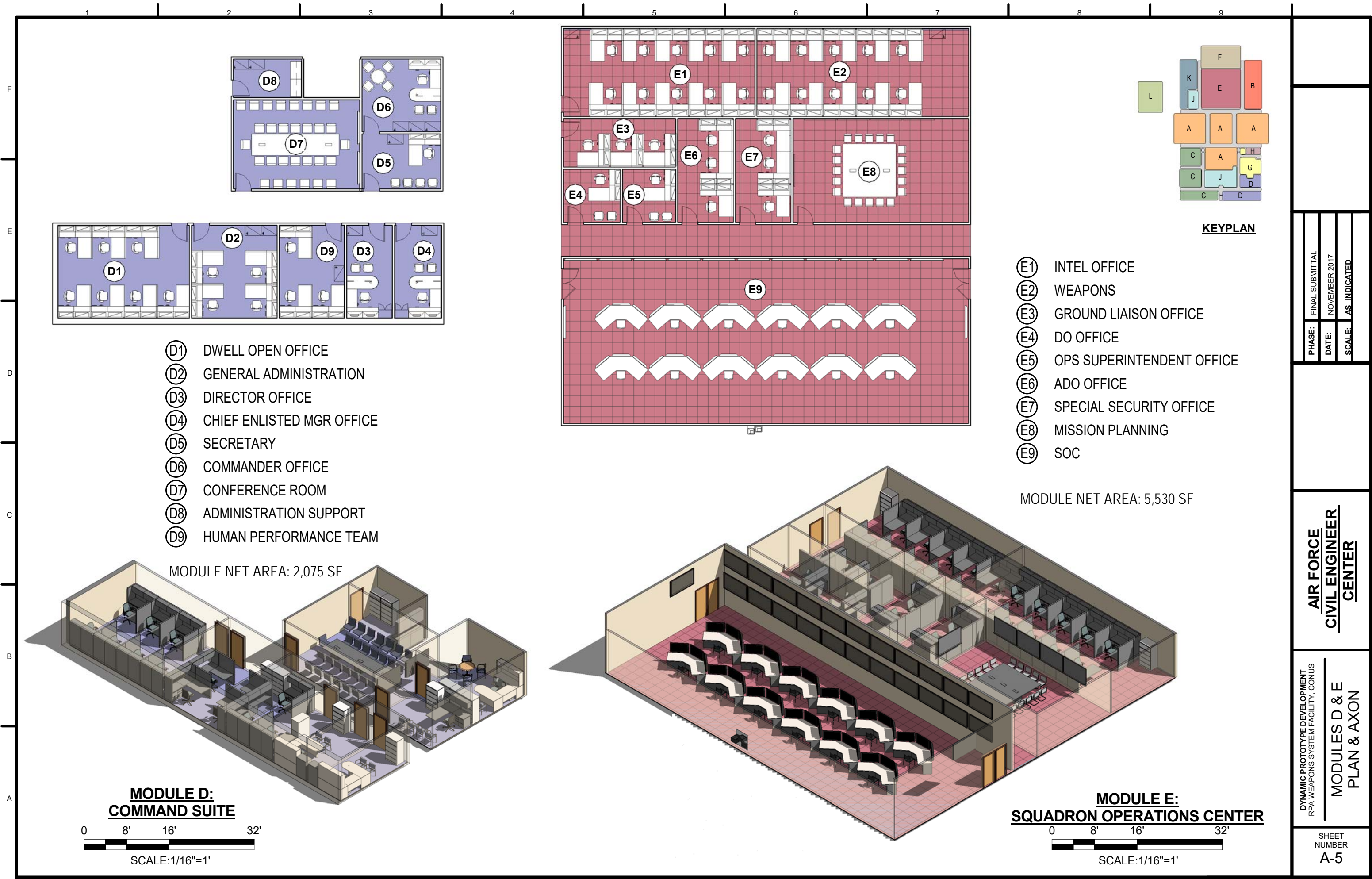
0 8' 16' 32'

SCALE: 1/16"=1'

**AIR FORCE  
CIVIL ENGINEER  
CENTER**

DYNAMIC PROTOTYPE DEVELOPMENT  
RPA WEAPONS SYSTEM FACILITY, CONUS  
**MODULES B & C  
PLAN & AXON**

SHEET  
NUMBER  
**A-4**



- (D1) DWELL OPEN OFFICE
- (D2) GENERAL ADMINISTRATION
- (D3) DIRECTOR OFFICE
- (D4) CHIEF ENLISTED MGR OFFICE
- (D5) SECRETARY
- (D6) COMMANDER OFFICE
- (D7) CONFERENCE ROOM
- (D8) ADMINISTRATION SUPPORT
- (D9) HUMAN PERFORMANCE TEAM

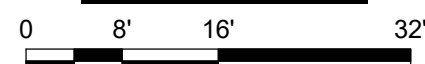
- (E1) INTEL OFFICE
- (E2) WEAPONS
- (E3) GROUND LIAISON OFFICE
- (E4) DO OFFICE
- (E5) OPS SUPERINTENDENT OFFICE
- (E6) ADO OFFICE
- (E7) SPECIAL SECURITY OFFICE
- (E8) MISSION PLANNING
- (E9) SOC

**KEYPLAN**

MODULE NET AREA: 5,530 SF

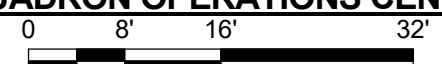
MODULE NET AREA: 2,075 SF

**MODULE D:  
COMMAND SUITE**



SCALE: 1/16"=1'

**MODULE E:  
SQUADRON OPERATIONS CENTER**



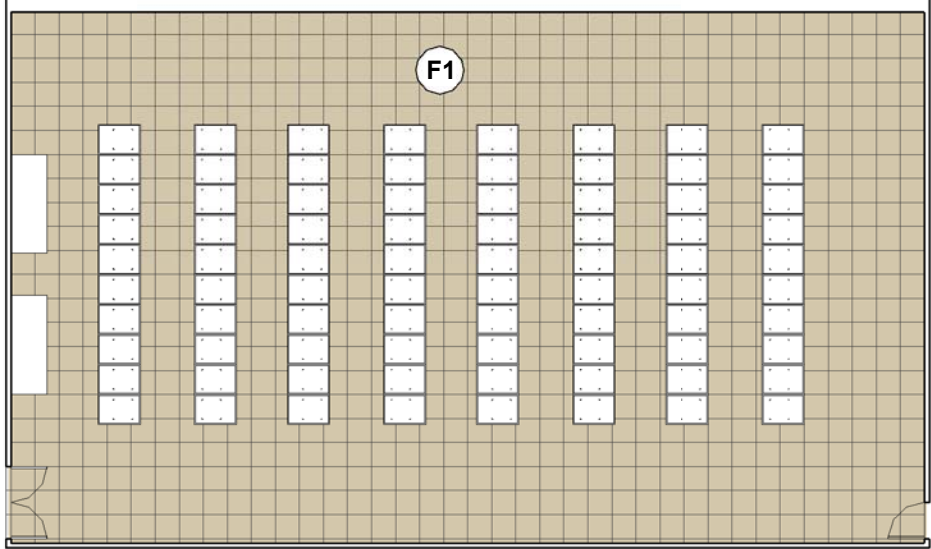
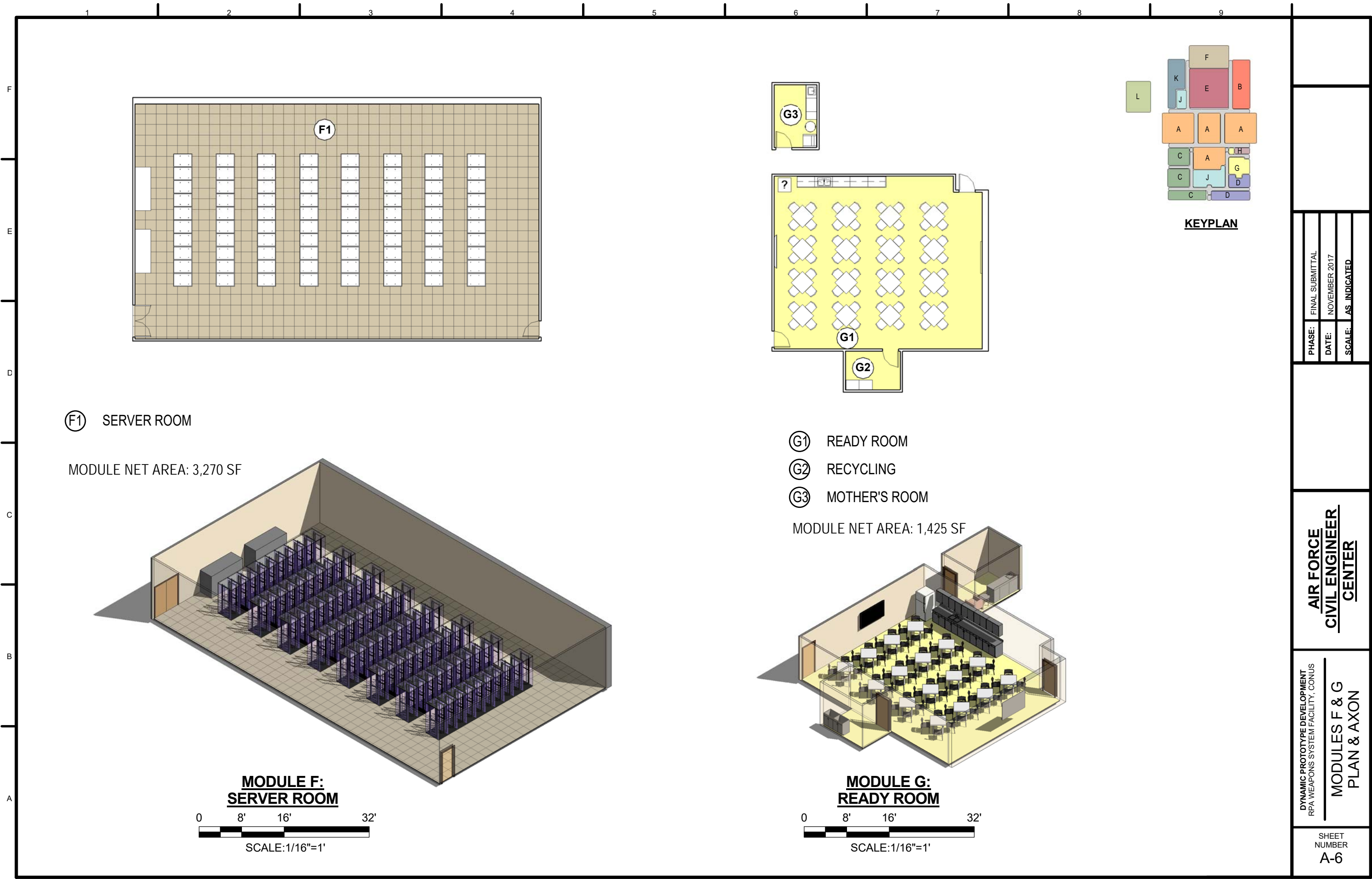
SCALE: 1/16"=1'

|        |                 |
|--------|-----------------|
| PHASE: | FINAL SUBMITTAL |
| DATE:  | NOVEMBER 2017   |
| SCALE: | AS INDICATED    |

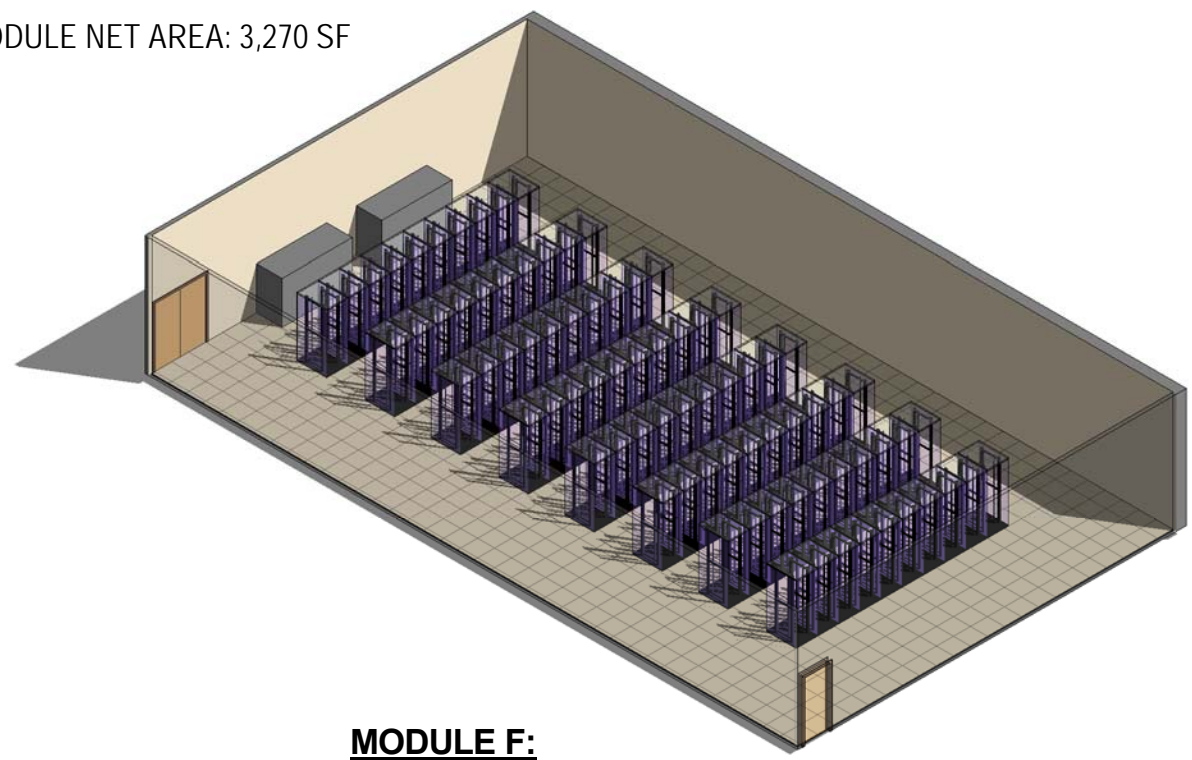
**AIR FORCE  
CIVIL ENGINEER  
CENTER**

DYNAMIC PROTOTYPE DEVELOPMENT  
RPA WEAPONS SYSTEM FACILITY, CONUS  
**MODULES D & E  
PLAN & AXON**

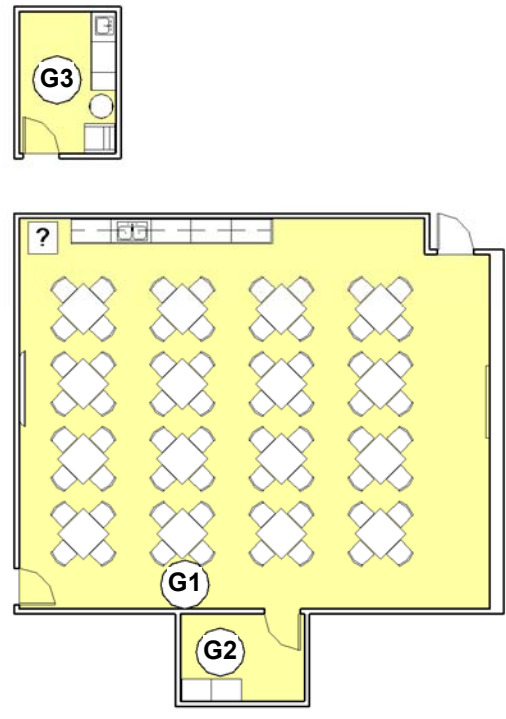
SHEET  
NUMBER  
**A-5**



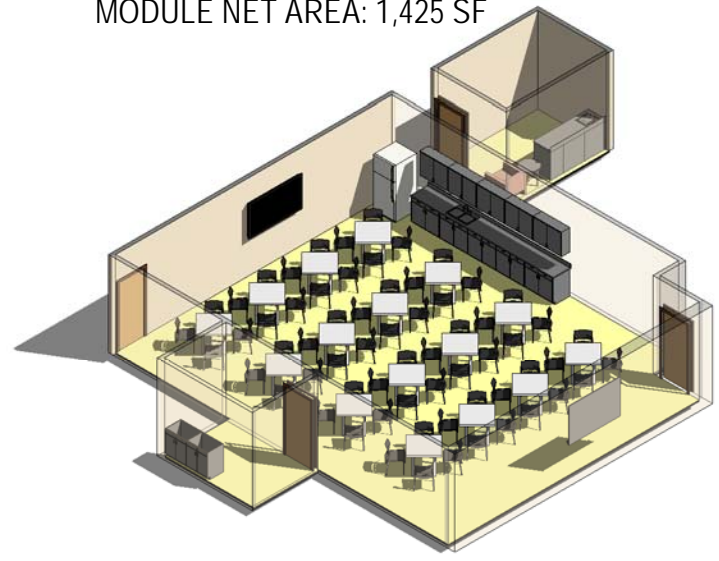
**(F1) SERVER ROOM**  
 MODULE NET AREA: 3,270 SF



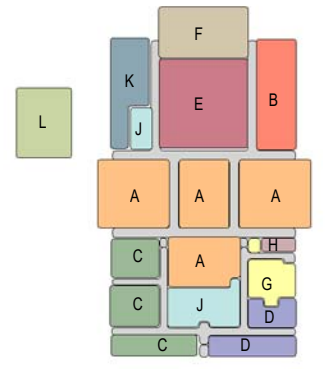
**MODULE F:  
 SERVER ROOM**  
 0 8' 16' 32'  
 SCALE: 1/16"=1'



**(G1) READY ROOM**  
**(G2) RECYCLING**  
**(G3) MOTHER'S ROOM**  
 MODULE NET AREA: 1,425 SF



**MODULE G:  
 READY ROOM**  
 0 8' 16' 32'  
 SCALE: 1/16"=1'



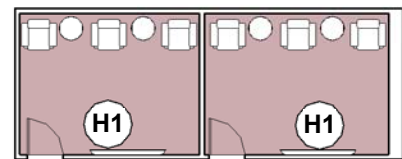
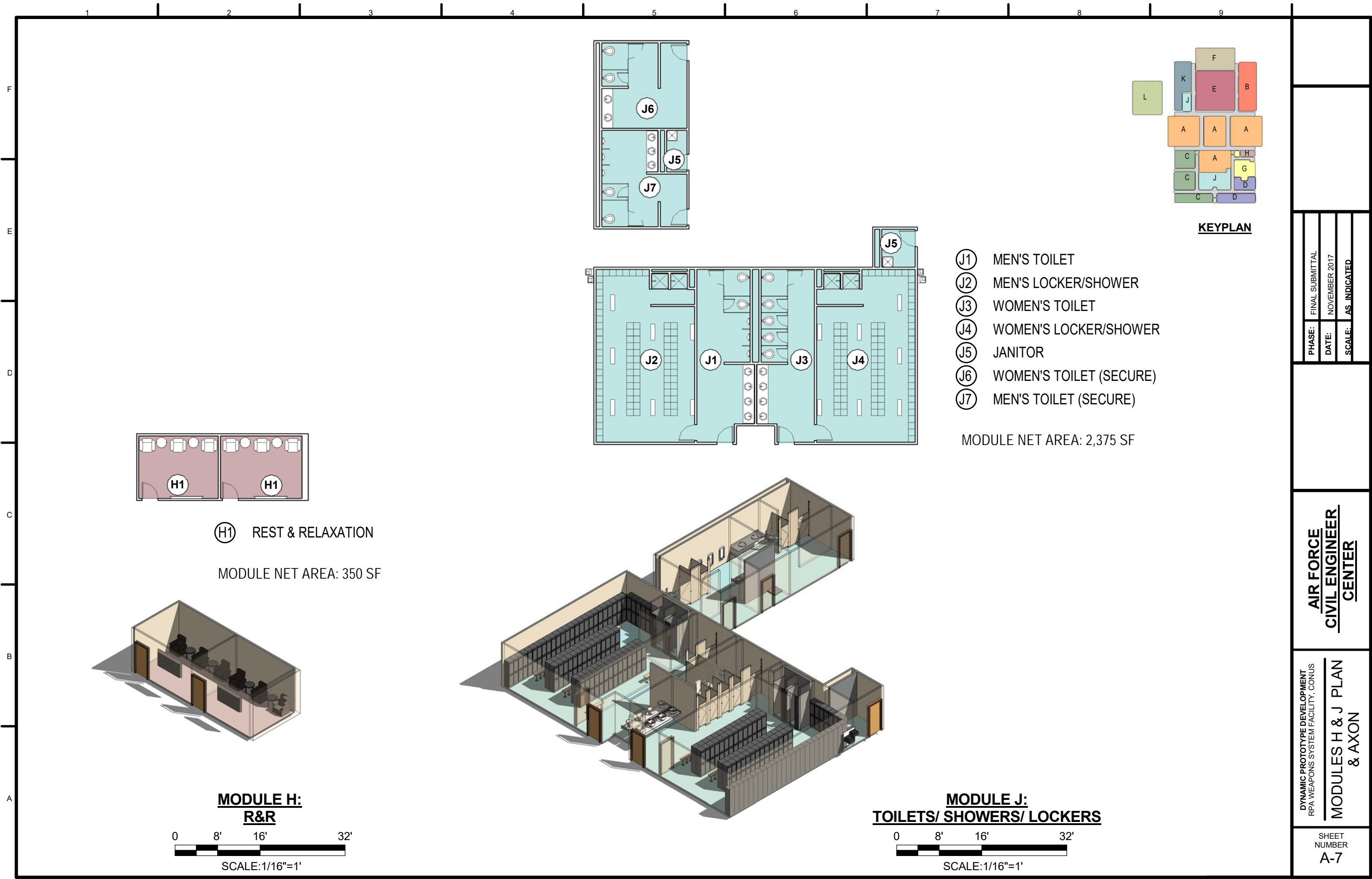
**KEYPLAN**

|        |                 |
|--------|-----------------|
| PHASE: | FINAL SUBMITTAL |
| DATE:  | NOVEMBER 2017   |
| SCALE: | AS INDICATED    |

**AIR FORCE  
 CIVIL ENGINEER  
 CENTER**

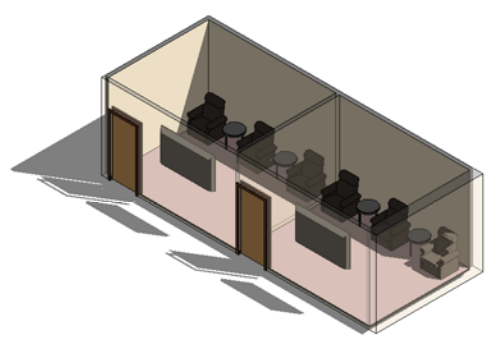
**DYNAMIC PROTOTYPE DEVELOPMENT  
 RPA WEAPONS SYSTEM FACILITY, CONUS  
 MODULES F & G  
 PLAN & AXON**

SHEET  
 NUMBER  
**A-6**

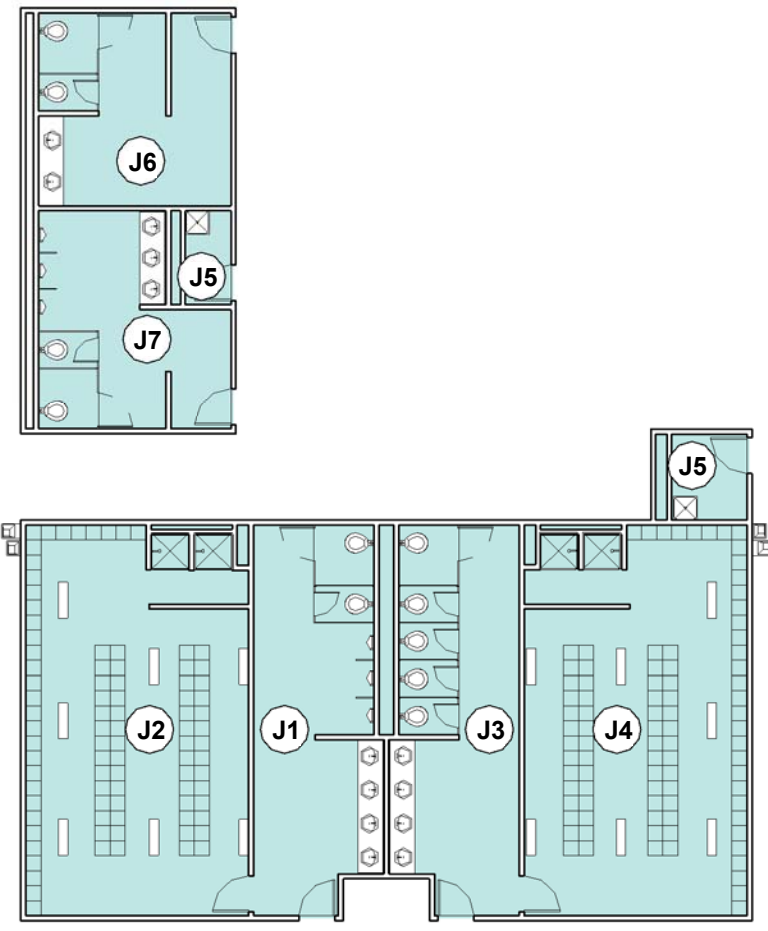


(H1) REST & RELAXATION

MODULE NET AREA: 350 SF

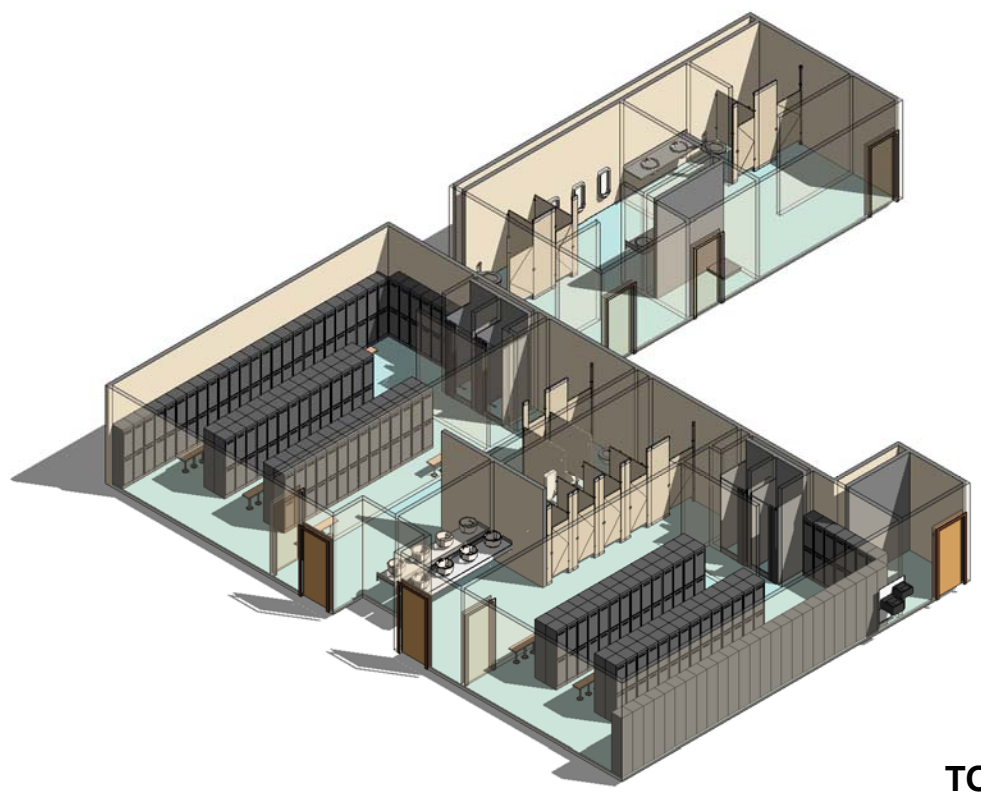


**MODULE H:  
R&R**

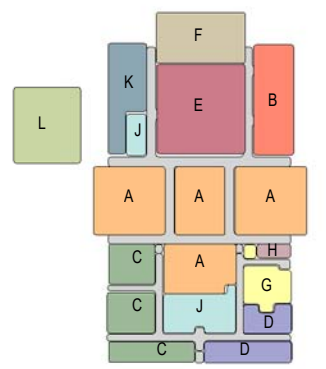
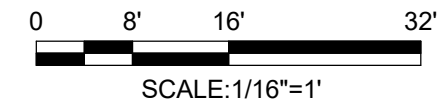


- (J1) MEN'S TOILET
- (J2) MEN'S LOCKER/SHOWER
- (J3) WOMEN'S TOILET
- (J4) WOMEN'S LOCKER/SHOWER
- (J5) JANITOR
- (J6) WOMEN'S TOILET (SECURE)
- (J7) MEN'S TOILET (SECURE)

MODULE NET AREA: 2,375 SF



**MODULE J:  
TOILETS/ SHOWERS/ LOCKERS**



**KEYPLAN**

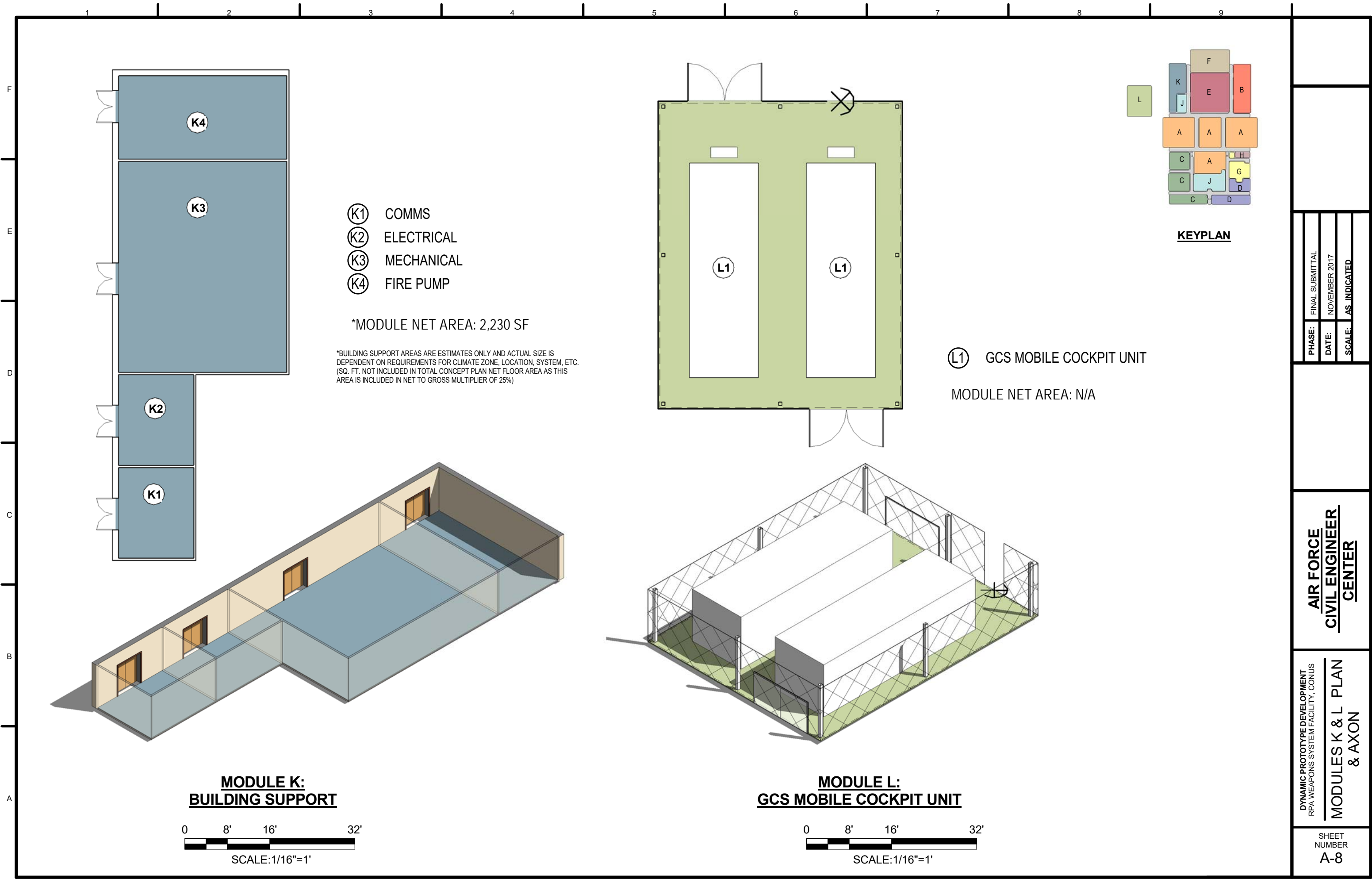
|        |                 |
|--------|-----------------|
| PHASE: | FINAL SUBMITTAL |
| DATE:  | NOVEMBER 2017   |
| SCALE: | AS INDICATED    |

**AIR FORCE  
CIVIL ENGINEER  
CENTER**

**DYNAMIC PROTOTYPE DEVELOPMENT  
RPA WEAPONS SYSTEM FACILITY, CONUS  
MODULES H & J PLAN  
& AXON**

SHEET NUMBER  
**A-7**



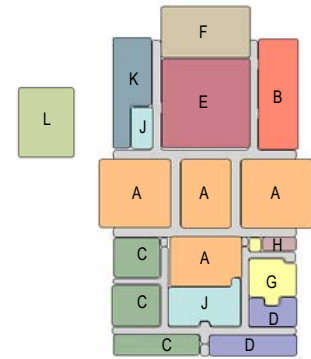


- (K1) COMMS
- (K2) ELECTRICAL
- (K3) MECHANICAL
- (K4) FIRE PUMP

\*MODULE NET AREA: 2,230 SF

\*BUILDING SUPPORT AREAS ARE ESTIMATES ONLY AND ACTUAL SIZE IS DEPENDENT ON REQUIREMENTS FOR CLIMATE ZONE, LOCATION, SYSTEM, ETC. (SQ. FT. NOT INCLUDED IN TOTAL CONCEPT PLAN NET FLOOR AREA AS THIS AREA IS INCLUDED IN NET TO GROSS MULTIPLIER OF 25%)

(L1) GCS MOBILE COCKPIT UNIT  
MODULE NET AREA: N/A



**KEYPLAN**

|        |                 |
|--------|-----------------|
| PHASE: | FINAL SUBMITTAL |
| DATE:  | NOVEMBER 2017   |
| SCALE: | AS INDICATED    |

**AIR FORCE  
CIVIL ENGINEER  
CENTER**

**DYNAMIC PROTOTYPE DEVELOPMENT  
RPA WEAPONS SYSTEM FACILITY, CONUS  
MODULES K & L PLAN  
& AXON**

SHEET NUMBER  
**A-8**

**MODULE K:  
BUILDING SUPPORT**



**MODULE L:  
GCS MOBILE COCKPIT UNIT**

