

STANDARD DESIGN

AIR FORCE

REMOTELY PILOTED AIRCRAFT

SQUADRON OPERATIONS FACILITY



TABLE OF CONTENTS

Chapter 1 Introduction

- 1.1 Standard Design
- 1.2 Air Force Standard Design Policy
 - 1.2.A Required use of Standard Designs
 - 1.2.B Integration with Air Force Corporate and Installation Facility Standards
- 1.3 Applicability
 - 1.3.A. Additions and Alterations

Chapter 2 Facility Design

- 2.1 Facility Description
 - 2.1.A Function
 - 2.1.B Typical Users
 - 2.1.C Related AFMAN 32-1084 Category Code
 - 2.1.D Resiliency Threshold
- 2.2 Criteria
 - 2.2.A Sustainability
 - 2.2.B Security and Antiterrorism
- 2.3 Notional Site
 - 2.3.A Site Location, Orientation and Adjacencies
 - 2.3.B Parking
 - 2.3.C Vehicular and Pedestrian Circulation
 - 2.3.D Notional Site Plan
- 2.4 Building Design
 - 2.4.A General Considerations
 - 2.4.B Building Configuration
 - 2.4.C Interior/Exterior Relationships
 - 2.4.D Functional Area Requirements
 - 2.4.E Room Data Sheets
 - 2.4.F Floor Plan
 - 2.4.G Interactive Programming Worksheet

CHAPTER 1 INTRODUCTION

1.1. STANDARD DESIGN

Standard Designs provide functional and spatial requirements for specific Air Force facility types, and are intended for use in conjunction with DoD Unified Facilities Criteria (UFC), Air Force Corporate Facility Standards, Installation Facility Standards, and other applicable standards.

Standard Designs are living documents that are periodically reviewed, updated, and made available to users by posting on the Whole Building Design Guide. This Standard Design, as well as those for many other Air Force facilities, can be accessed at this web site: <http://wbdg.org/ffc/af-afcec/prototypes-standard-designs>

This Standard Design is effective upon issuance and is distributed only in electronic media.

1.2 AIR FORCE STANDARD DESIGN POLICY

1.2.A. Required use of Standard Designs

The use of Air Force Corporate Facilities Standards (AFCFS), Installation Facility Standards (IFS) and Standard Designs has been codified in the most recent version of AFI 32-1023, *Designing and Constructing Military Construction Projects* (ref (c)). In compliance with the AFI, all facility designs must conform to the standards outlined and specified in the AFCFS, and if there is an applicable Installation Facilities Standards (IFS) document, the project must conform to those standards as well.

This Standard Design was developed in close coordination with the facility's functional users to determine personnel counts, allowable/authorized space/room sizes, adjacency diagrams between the functional spaces, and the overall facility space requirements. It also addresses special requirements unique to this facility type. Use this Standard Design in conjunction with other AF policy and regulations such as AFI's, and UFC's when programming and designing this facility type.

1.2.B. Integration with Air Force Corporate and Installation Facility Standards

The Air Force Corporate Facilities Standards (AFCFS), is an enterprise-wide program of facility standards establishing an acceptable level of quality and performance for facility design, facility operations and ongoing building maintenance. The AFCFS provides an exciting direction forward; intended to create sustainable installations and cohesive, efficient, High Performance and Sustainable Buildings throughout the Air Force.

Installation Facilities Standards (IFS) are part of the Air Force Corporate Facilities Standards (AFCFS) program to assist bases in implementing facilities standards at the local level. Bases develop and maintain an IFS, which replaces the Architectural Compatibility Plan, as a component plan of the Installation Development Plan (IDP).

Programmers and designers for Remotely Piloted Aircraft Squadron Operations Facilities must use this Standard Design to ensure the specific functional, spatial, and special requirements are met, meet the local requirements established by the IFS, and the overall Air Force requirements set forth in the AFCFS.

1.3 APPLICABILITY

This Standard Design provides requirements for evaluating, planning, programming, and designing a Remotely Piloted Aircraft Squadron Operations Facility that supports the mission, is appropriately sized, flexible, durable, and life-cycle cost efficient. The information in this Standard Design applies to the design of all new construction projects, to include additions, alterations, and renovation projects worldwide. It also applies to the procurement of Design Build services for the above-noted projects. Alteration and renovation projects should update existing facilities to meet the guidance and criteria within budgetary constraints.

The facility size is dependent on the number of CAPs (Combat Air Patrols) or Cockpits. Use the Interactive Programming Worksheet to assist in these adjustments.

1.3. A. Additions and Alterations

For additions and alterations to existing facilities, use the adjacencies, sizing/scope and detailed requirements contained in the site diagrams, module drawings, and room data sheets to the maximum extent possible. The functionality and adjacency of the modules are still valid, but may require some manipulation to fit into existing spaces. This standard may be modified slightly to accommodate the existing structure. Remove non-structural walls to the greatest extent possible to open up space in the existing facilities to make them more receptive to the placement of the modules. The planner and designer must determine the most efficient means to balance the placement of modules within existing spaces or as a facility addition.

CHAPTER 2 FACILITY DESIGN

2.1 FACILITY DESCRIPTION

2.1.A. Function

The primary function of this Remotely Piloted Aircraft Squadron Operations Facility is to provide a facility that fully supports the mission with a flexible state-of-the-art building. The facility supports weapons systems and communications technology within a standalone facility. The facility is comprised of Secure (SCIF) and Un-secure areas. The primary areas in the facility are the SOC (Squadron Operations Center) and the Cockpits (Ground Control Stations). Remotely Piloted Aircraft Squadron Operations Facilities will consist of, but are not limited to grouped rooms or “Modules”. The modules needed for this facility are as follows (included rooms are noted below module title):

Non-Secure Area Modules

- Administrative Suite Module
 - Testing, Standards Evaluation, Training, Scheduling, Ops Supervisor, SARM, SARM Office (x2), Security
- Command Suite Module
 - Dwell Open Office, General Administration, Conference Room, Chief Enlist Manager, Director Office, Secretary, Commander, Human Performance Team, Administration Support
- Ready Room Module
 - Ready Room, New Mother’s Room, Recycling Room
- R&R Module
 - Rest & Relaxation Room (x2 – one Male, one Female)
- Non-secure primary Toilets/Showers/Lockers Module
 - Men’s Toilet, Men’s Locker/Shower, Women’s Toilet, Women’s Locker/Shower, Janitor
- Building Support
 - Fire Pump Room, Electrical Room, Mechanical Room, Telecommunications Room

Secure Area Modules

- GCS/GCS SOC Support Module
 - Flight Comm/NCOIC (x 8), GCS Briefing (x15), Cockpit (x4), Simulator, Spare Room , IOS Operators
- GCS Communications Maintenance Module
 - GCS Maintenance, RPA Comm, Supervisor, OIC, Section Chief, Conference Room, GCS Tech, Tool CTK, Production
- Squadron Operations Center Module
 - Mission Planning, Special Security, ADO Office, GLO Office, DO, OPS Supervisor, Intel, SOC
- Server Room Module

- Server Room
- Secure secondary Toilets
 - Men's Toilet, Women's Toilet, Janitor

AFCFS: Consult the Air Force Corporate Facilities Standards (AFCFS) to determine quality standards for this facility group. This standard facility prototype is considered a Group 3 hierarchy.

2.1.B. Typical Users

This facility is operated by active duty, guard, and reserve military personnel as well as civilian contractor representatives of the systems providers as well as USAF Civilian Federal Workforce.

Personnel assigned to this facility operate 24/7 on three shifts; Days, Swings and Mids. Approximately 75 aircrew and support personnel, plus an additional 25 contractors per shift support a standard four Combat Line (CL) squadron. Three squadrons will share a rotational schedule in which one squadron will go into "dwell" status while the other two maintain CLs. During dwell, combat operations and shiftwork will cease while the squadron reconstitutes and as many as the entire squadron of 160 plus 25-50 contractors will occupy the facility during the day.

2.1.C. Related AFMAN 32-1084 Category Code

The related AFMAN 32-1084 Category Codes are as follows: This facility would be governed by Chapter 2, Facility Class 1, Operation and Training, Category Group 14, Land Operations Facilities, Sub-Category Squadron Operations CATCODE 141753 and Chapter 6, Facility Class 6, Administrative, Category Group 61, Administrative and Administrative Support Spaces.

2.1.D. Resiliency Threshold

Modules of the building that directly support the mission of the Remotely Piloted Aircraft Squadron Operations Facility are required to have backup power to ensure resiliency during a utility power event to ensure un-interrupted functions of the weapons system.

2.2 CRITERIA

APPLICABLE UNIFIED FACILITY CRITERIA

Comply with UFC 1-200-01, DoD Building Code (General Building Requirements). UFC 1-200-01 provides applicability of model building codes and government unique criteria for typical design disciplines and building systems, as well as for accessibility, antiterrorism, security, high performance and sustainability requirements, and safety. Use this Standard Design in addition to UFC 1-200-01 and the UFCs and government criteria referenced therein. UFC 1-200-01 references other "Core UFCs" that are applicable to this Standard Design as well as most all DoD facilities.

UFC 1-200-01	DoD Building Code (General Building Requirements)
UFC 1-200-02	High Performance and Sustainability Building Requirements
UFC 1-300-07A	Design Build Technical Requirements
UFC 3-101-01	Architecture
UFC 3-110-03	Roofing
UFC 3-120-01	Design: Sign Standards
UFC 3-120-10	Interior Design
UFC 3-190-06	Protective Coatings and Paints
UFC 3-201-01	Civil Engineering
UFC 3-201-02	Landscape Architecture
UFC 3-210-10	Low Impact Development
UFC 3-220-01	Geotechnical Engineering
UFC 3-230-01	Water Storage, Distribution, and Transmission
UFC 3-240-01	Wastewater Collection
UFC 3-250-01FA	Pavement Design for Roads & Parking Areas
UFC 3-250-04	Standard Practice for Concrete Pavements
UFC 3-260-01	Airfield and Heliport Planning and Design
UFC 3-260-17	Dust Control for Roads, Airfields, and Adjacent Areas
UFC 3-301-01	Design: Structural Engineering
UFC 3-400-02	Design: Engineering Weather Data
UFC 3-401-01	Mechanical Engineering
UFC 3-410-01	Heating, Ventilation, and Air Conditioning Systems
UFC 3-410-02	Lonworks Direct Digital Control for HVAC and Other Local Building Systems
UFC 3-420-01	Plumbing Systems
UFC 3-450-01	Noise and Vibration Control
UFC 3-501-01	Electrical Engineering

UFC 3-520-01	Interior Electrical Systems
UFC 3-520-05	Stationary Battery Areas
UFC 3-530-01	Design: Interior and Exterior Lighting and Controls
UFC 3-540-01	Engine-Driven Generator Systems For Backup Power Applications
UFC 3-550-01	Exterior Electrical Power Distribution
UFC 3-570-01	Cathodic Protection
UFC 3-575-01	Lightning and Static Electricity Protection Systems
UFC 3-580-01	Telecommunications Building Cabling Systems Planning and Design
UFC 3-600-01	Fire Protection Engineering for Facilities
UFC 4-010-01	DoD Minimum Antiterrorism Standards for Buildings
UFC 4-010-05	Sensitive Compartmented Information Facilities Planning, Design, and Construction.
UFC 4-020-01	Security Engineering Facilities Planning Manual
UFC 4-021-01	Design and O&M: Mass Notification Systems
UFC 4-010-06	Cybersecurity of Facility-Related Control Systems
UFC 4-022-03	Security Fences and Gates
UFC 4-023-03	Design of Buildings to Resist Progressive Collapse
USGBC LEED-NC	LEED for New Construction and Major Renovations Rating System (U.S. Green Building Council)

2.2.A. Sustainability

Comply with the Federal sustainability requirements as detailed in UFC 1-200-02, High Performance and Sustainable Building Requirements. Determine third-party certification requirements based on Table 1-1 of UFC 1-200-02 and current AF guidance at <https://www.wbdg.org/ffc/af-afcec>.

2.2.B. Security and Antiterrorism

The facility must meet, UFC 4-020-01 Security Engineering Facilities Planning Manual, UFC 04-010-01 DoD Minimum Antiterrorism Standards for Buildings, Change 1, UFC 4-

010-05 Sensitive Compartmented Information Facilities Planning, Design, and Construction and ICD/ICS 705 Technical Specifications for Construction and Management of Sensitive Compartmented Information Facilities. Internal security measures include designated 'non-secure' and 'secure' areas within the building with access to secure areas controlled and monitored by special access hardware, Intrusion Detection Systems and Closed-Circuit Television Systems (CCTV). Exterior security measures will include antiterrorism stand-off distances for parking, controlled vehicular circulation, appropriately located trash enclosures, clear space surrounding the facility, and the single point of building entry.

2.3 NOTIONAL SITE

2.3.A. Site Location, Orientation and Adjacencies

The notional site plan diagram demonstrates key site development criteria. It is not a site-specific solution. The information represents the land requirements to construct this facility and includes associated AT standoff and parking. Utilization of existing or shared parking is allowable and may reduce the total acreage required for the facility. Adapt the requirements to the specific site and location and comply with the applicable Installation Development Plan (IDP) and Area Development Plan (ADP) for facility siting.

Several factors determine the most appropriate and cost-effective location for a facility. The availability and capacity of required utilities and the mass/scale of the facility relative to adjacent structures and noise issues must be analyzed.

Emphasis must be placed on operation, function, and safety when siting the facility. The preferred location for this facility is immediately adjacent to the flight line or in 'close proximity'. Other facility functions placed within 'close proximity' may include the MQ-9 General Maintenance Hangar Facility and Aircraft Sunshades. Analyze and comply with airfield clearances, building setback restrictions, and line of sight restrictions from the adjacent flight-line.

The approximate project area required for the Remotely Piloted Aircraft Squadron Operations Facility is 6.0 acres, which includes antiterrorism standoff, future building expansion, Mobile Cockpit area, building utility area, and parking. Utilization of existing or shared parking is allowable and may reduce the total acreage required for the facility.

2.3.B. Parking

Parking must be provided to accommodate the largest shift size plus an additional 40 percent for shift overlap.

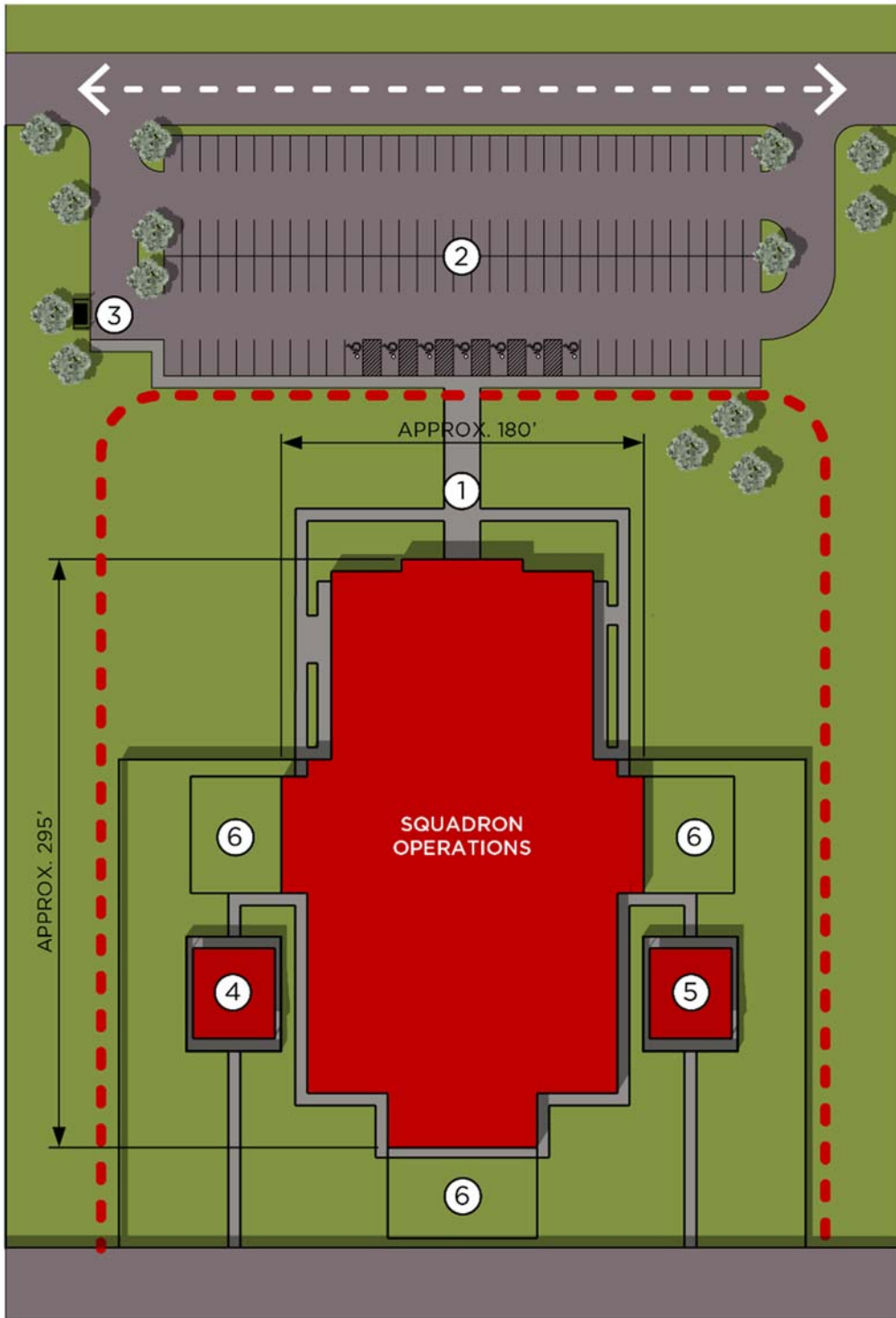
2.3.C. Vehicular and Pedestrian Circulation

Convenient and safe vehicular access and circulation must be provided for personal vehicles and essential services, including operations, maintenance, deliveries, trash and garbage collection, and emergency services.

Locate sidewalk networks to provide convenient and safe pedestrian circulation from existing circulation elements of the project site to the new parking areas and doors of the facility. Sidewalk width must accommodate maintenance and emergency services requirements.

2.3.D. Notional Site Plan

See Next Page for Image



- | | |
|---------------------------------|--|
| ① PRIMARY BUILDING ENTRY | ⑤ UTILITY YARD |
| ② POV PARKING LOT | ⑥ POSSIBLE EXPANSION AREAS |
| ③ DUMPSTER / SCREENED ENCLOSURE | --- CONCEPTUAL AT SETBACK (REFERENCE UFC 4-010-01) |
| ④ GCS MOBILE COCKPIT UNITS | <---> ACCESS STREET |

2.4 BUILDING DESIGN

2.4.A. General Considerations

General considerations of the facility design are centered on:

- The GCS/GCS SOC Support and the Squadron Operations Center
- The division of the secure and non-secure portions of the facility
- The functional relationships between the modules as well as within the modules
- The general personnel flow requirements within the facility.

Daily shift personnel enter the facility through the non-secure area of the building and continue to the secure area of the building. The non-secure area consists of the following modules:

- Administrative Suite Module
- Command Suite Module
- R&R Module
- Ready Room Module
- Non-secure primary Toilets/Showers/Lockers Module

The secure area consists of the following modules:

- GCS/GCS SOC Support Module
- GCS Communications Maintenance Module
- Squadron Operations Center Module
- Server Room Module
- Secure secondary Toilets

The Building Support Module needs exterior access and are not part of secure or non-secure areas.

Other general considerations include:

- Access flooring systems for many facility spaces
- Adequate ceiling height for Cockpit and SOC areas
- Wide corridors to accommodate future Cockpit technology advances and allow ease of maintenance, etc.
- Administrative Suite and Command Suite open office type areas are oversized to accommodate 'Dwelling' status.
- Windows are limited to non-secure areas

2.4.B. Building Configuration

The building should be configured for future expansion or reconfiguration. The general size of the building is based on the number of Cockpits required. There are two GCS Briefing Rooms and a Flight/NCOIC Office for each Cockpit. The size of the following modules is affected by the number of Cockpits:

- SOC Module
- GCS Communications Maintenance Module
- Server Room Module
- Building Utility Modules
- Administration Suite Module
- Command Suite Module
- Toilets/Showers/Lockers Module
- GCS Mobile Cockpit Units

2.4.C. Interior/Exterior Relationships

There is only one entrance into the facility which is through a non-secure Entrance Vestibule. All other exterior doors (with exception of Building Utility Rooms) will only have egress hardware with no re-entry capability. The SOC, Server Room and the Cockpit Rooms will require wide corridors and double door exterior access for moving large systems components to these rooms. These double doors will open on to wide concrete sidewalks connecting to vehicular parking/access areas.

2.4.D. Functional Area Requirements

Facility Modules Adjacency Diagrams & Conceptual Axonometric Layout(s)

The composite diagram(s) represent ways to conceptually assemble the functional areas (modules) into a cohesive whole. Individual modules are represented by different colors.

Spaces and rooms that are integrally related with a specific functional connection or operational flow are grouped into a module. Modules and the associated room data sheets identify specific criteria and additional detail for each functional area of the facility as outlined in the Interactive Programming Sheet located in Chapter 3.

The modules are a grouping of functional spaces and represent “Lego blocks” to be used in a “kit-of-parts” design approach. Use the fixed modules as pre-assembled pieces of the facility “puzzle”. Assemble them to comply with the required adjacencies indicated in the diagrams and module plans.

Modules must be used as shown in this Standard Design to the greatest extent possible, and must not be deconstructed or altered except as indicated herein. The intent of the Standard Design criteria is to avoid manipulation of the composition, functional relationships, adjacencies, and module sizes. Modules contain fixed attributes and must not be changed arbitrarily. Modules may be rotated, flipped, and/or mirrored to accommodate an overall composition or site issue, but this must not be done arbitrarily and should occur only when necessary.

Some modules are linked to space requirements that increase or decrease in size based on the personnel count and equipment for a particular mission. In these cases, increase or decrease the size of the module to match the revised scope calculation. This may sometimes require minor adjustments in other adjacent modules so that they properly fit together to create a constructible facility floor plan. Spaces must comply with any critical dimensions indicated on module plans. Manipulate as few modules as possible to create a constructible facility. The resulting composite plan must respect the established modules adjacencies and must not exceed the authorized project scope.

Functional Adjacency Diagram

The following Functional Adjacency Diagram will form the basis of design for the Standard Design plan for a typical Remotely Piloted Aircraft Squadron Operations Facility based on four Cockpits, one Training Cockpit and a Spare Cockpit scenario. This Facility Adjacency Diagram and as well as the modules is the Air Force approved Standard Design plan.

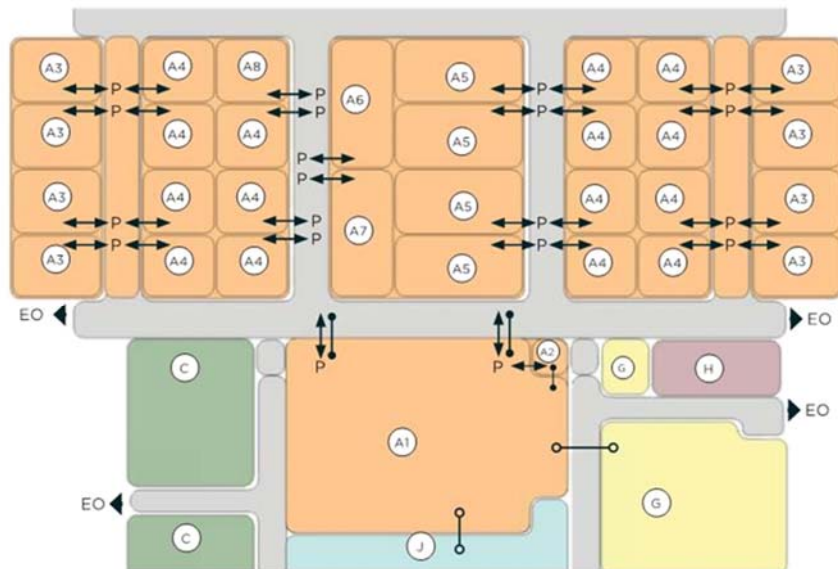


MODULE A – GCS / GCS SOC SUPPORT

Function and Adjacency

The Ground Communications Systems (GCS) / GCS SOC Support Module includes a Mass Briefing Room, Audio / Visual Storage, Flight Communications and Non-Commissioned Officer In Charge (NCOIC) Offices, GCS Briefing Rooms , IOS Simulator Operator Office and Cockpits Including Training and spare Cockpit rooms. The Cockpit rooms must be in very close proximity to the Server Room and the SOC (Squadron Operations Center). All rooms in this module are located within the secure area of the facility.

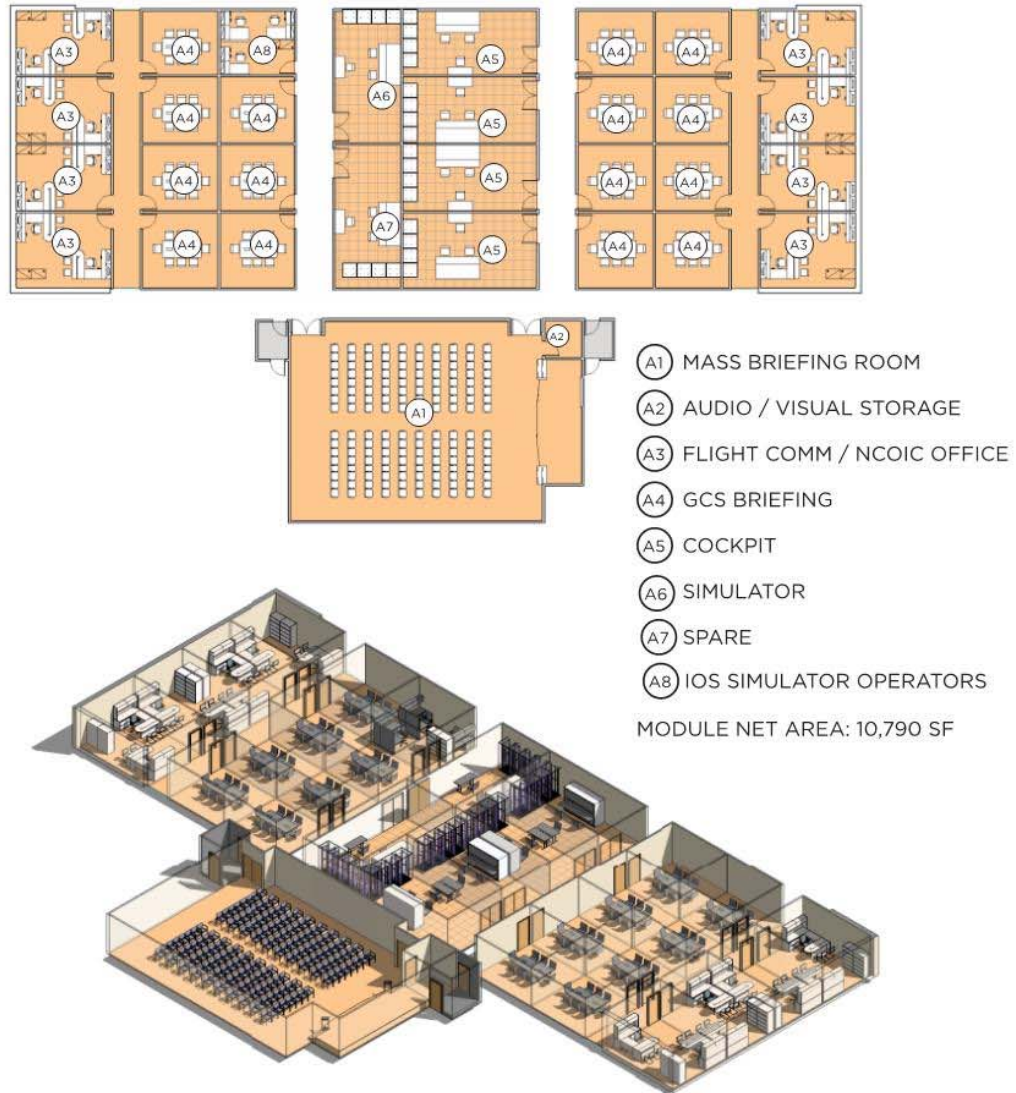
Figure 2-A.1 Module A Adjacency Diagram



- | | |
|---------------------------------|-------------------------------|
| (A1) MASS BRIEFING ROOM | ●—● PRIMARY ADJACENCY |
| (A2) AUDIO / VISUAL STORAGE | ○—○ PROXIMITY |
| (A3) FLIGHT COMM / NCOIC OFFICE | ↔ DIRECT ACCESS |
| (A4) GCS BRIEFING | - - -> DIRECT VIEW |
| (A5) COCKPIT | ◻ ENCLOSED AREA |
| (A6) SIMULATOR | ▶ ENTRY / EXIT |
| (A7) SPARE | B - BUILDING ENTRY |
| (A8) IOS SIMULATOR OPERATORS | E - EQUIPMENT / SERVICE ENTRY |
| | EO - EGRESS ONLY |
| | P - PERSONNEL ENTRY |
| | S - SECONDARY ENTRY |
| | <u>ADJACENT MODULES:</u> |
| | C - ADMINISTRATION SUITE |
| | G - READY ROOM |
| | H - R & R |

GCS / GCS SOC Support

Figure 2-A.2 Module A Floor Plan & Axonometric



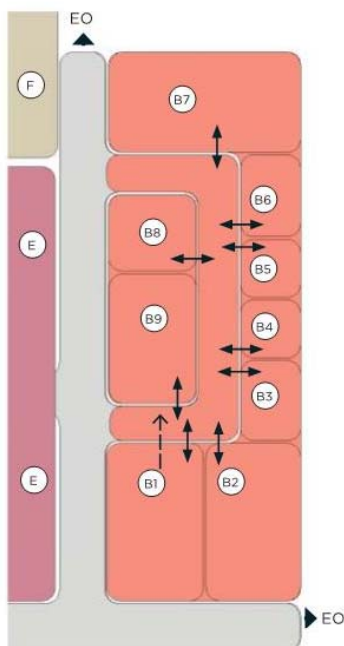
DRAWINGS NOT TO SCALE

MODULE B – GCS COMMUNICATIONS MAINTENANCE

Function and Adjacency

Ground Communications System (GCS) Communications Maintenance module includes a Tool Check Room, Production Office, Section Chief, Officer In Charge (OIC) Office, Supervisor Office, Remote Piloted Aircraft (RPA) Communications, GCS Maintenance Administration, Conference Room, and GCS Tech Room. This module is located within the secure area of the facility.

Figure 2-B.1 Module B Adjacency Diagram



- (B1) TOOL CTK
- (B2) PRODUCTION OFFICE
- (B3) SECTION CHIEF
- (B4) OIC OFFICE
- (B5) SUPERVISOR OFFICE
- (B6) RPA COMMS
- (B7) MAINTENANCE ADMINISTRATION
- (B8) CONFERENCE ROOM
- (B9) TECH ROOM

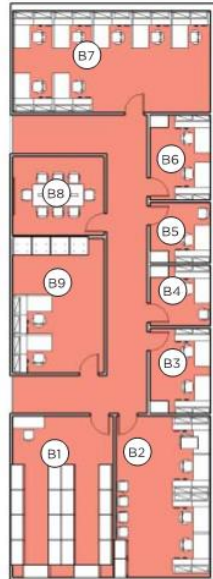
- PRIMARY ADJACENCY
- PROXIMITY
- ↔ DIRECT ACCESS
- - -> DIRECT VIEW
- ENCLOSED AREA
- ▶ **ENTRY / EXIT**
- B - BUILDING ENTRY
- P - PERSONNEL ENTRY
- E - EQUIPMENT / SERVICE ENTRY
- EO - EXIT ONLY

ADJACENT MODULES:
 E - SQUADRON OPERATIONS CENTER
 F - SERVER ROOM

DRAWINGS NOT TO SCALE

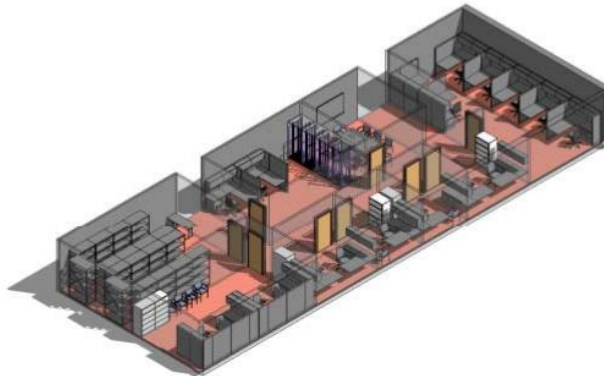
GCS Communications Maintenance

Figure 2-B.2 Module B Floor Plan & Axonometric



- (B1) TOOL CTK
- (B2) PRODUCTION OFFICE
- (B3) SECTION CHIEF
- (B4) OIC OFFICE
- (B5) SUPERVISOR OFFICE
- (B6) RPA COMMS
- (B7) MAINTENANCE ADMINISTRATION
- (B8) CONFERENCE ROOM
- (B9) TECH ROOM

MODULE NET AREA: 2,770 SF



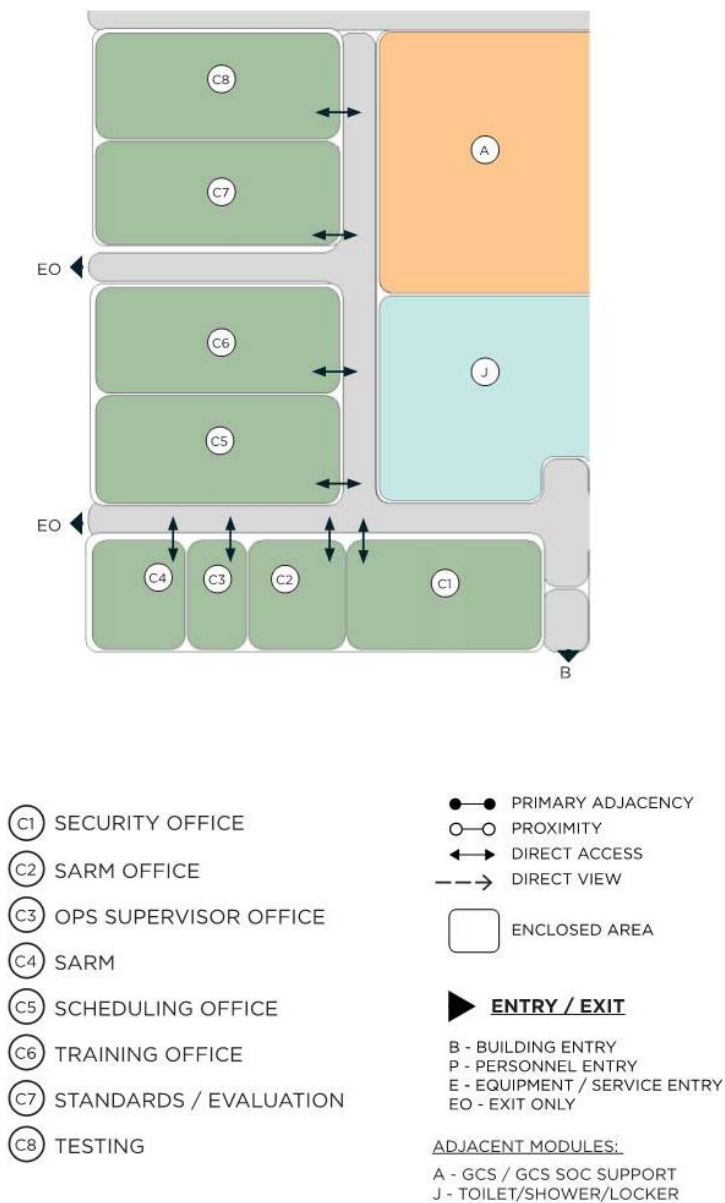
DRAWINGS NOT TO SCALE

MODULE C – ADMINISTRATIVE SUITE

Function and Adjacency

The Administrative Suite Module includes the Security Office, Squadron Aviation Resource Management (SARM), SARM Office, Operations (OPS) Supervisor Office, Training Office, Standard and Evaluations and the Testing Room. The Administrative Suite shall be located within the non-secure area of the facility near the Entrance Vestibule.

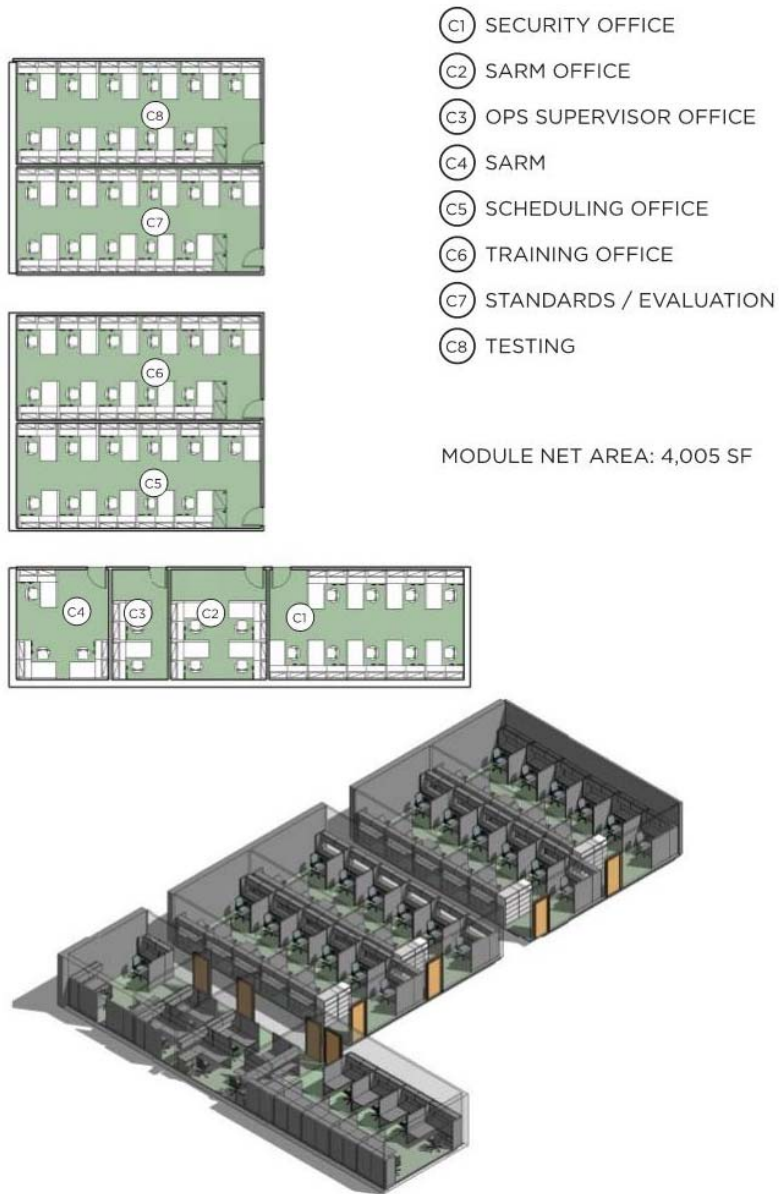
Figure 2-C.1 Module C Adjacency Diagram



DRAWINGS NOT TO SCALE

Administrative Suite

Figure 2-C.2 Module C Floor Plan & Axonometric



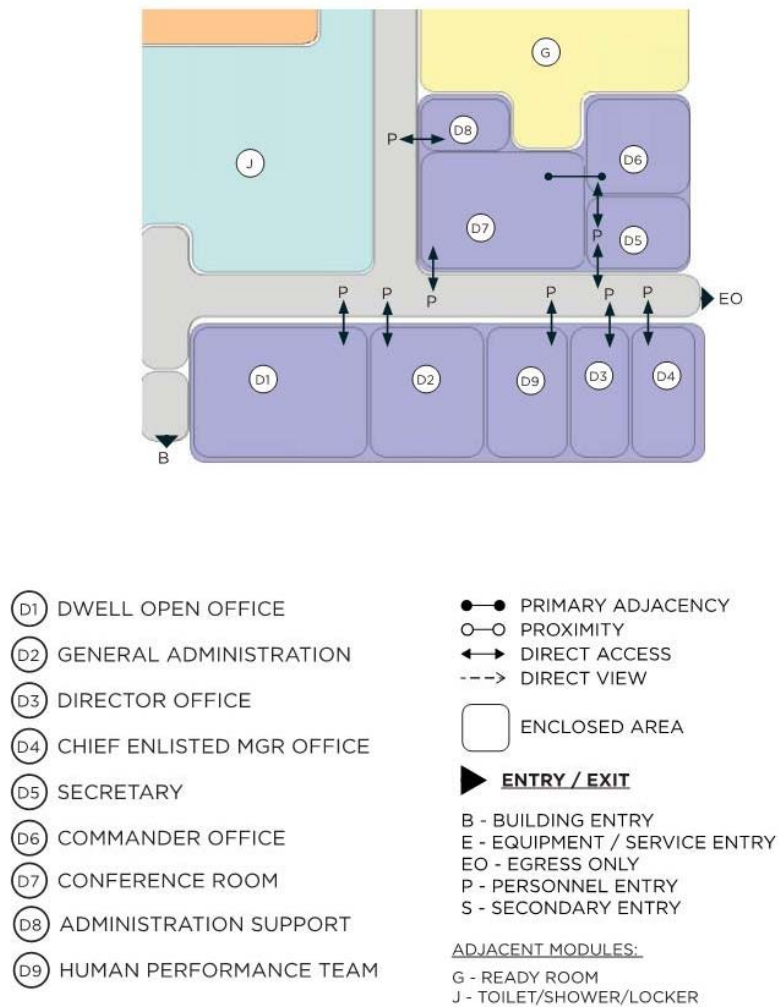
DRAWINGS NOT TO SCALE

MODULE D – COMMAND SUITE

Function and Adjacency

The Command Suite includes the General Administration Office, Dwell Open Office, Conference Room, Commander Secretary, Commander Office, Chief Enlisted Office and Director of Staff Office. The Command Suite shall be located within the non-secure area of the facility near the Entrance Vestibule.

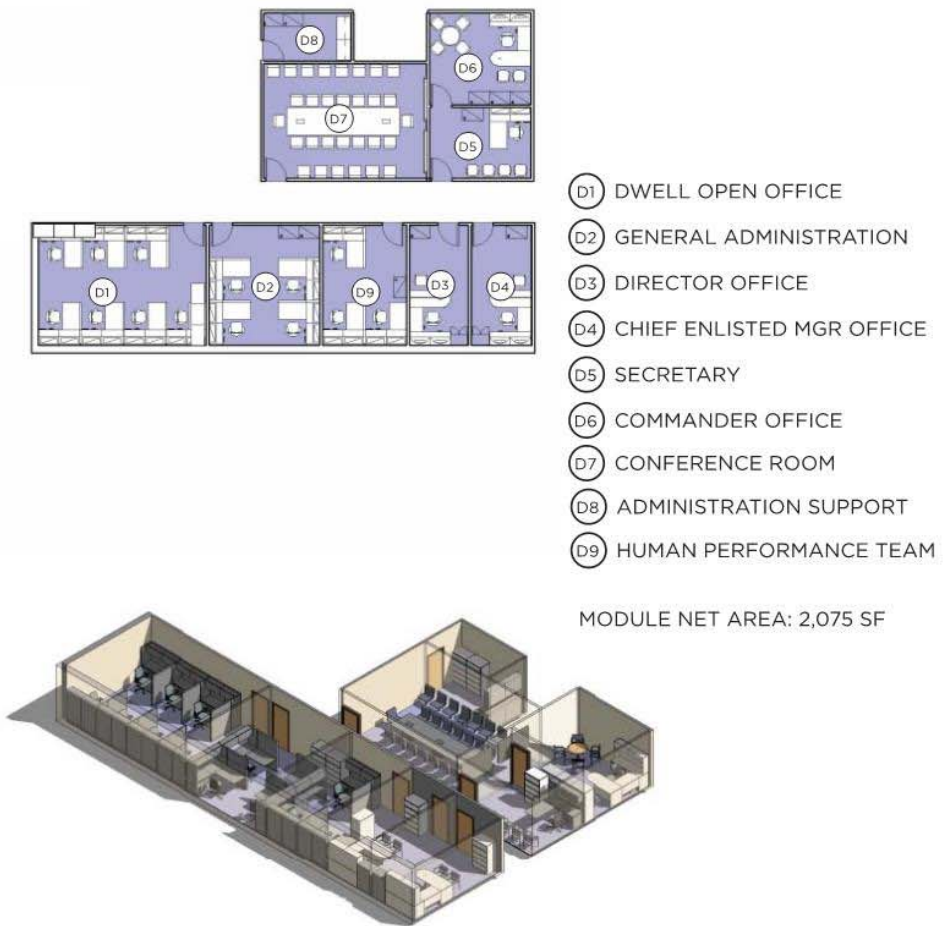
Figure 2-D.1 Module D Adjacency Diagram



DRAWINGS NOT TO SCALE

Command Suite

Figure 2-D.2 Module D Floor Plan & Axonometric



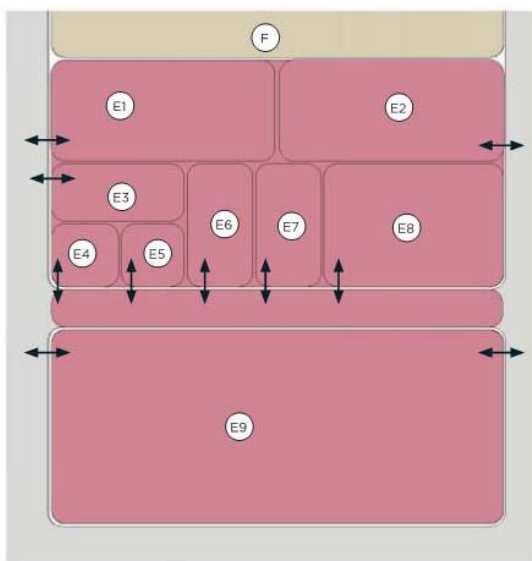
DRAWINGS NOT TO SCALE

MODULE E - SQUADRON OPERATIONS CENTER

Function and Adjacency

The Squadron Operations Center (SOC) module includes the Ground Liaison Office, Director of Operations (DO) Office, Operations (OPS) Superintendent Office, Associate Director of Operations (ADO) Office, Special Security Office, Mission Planning, Intel Office, and SOC. The SOC Module is located within the secured area and all rooms in the module have access flooring.

Figure 2-F.1 Module E Adjacency Diagram

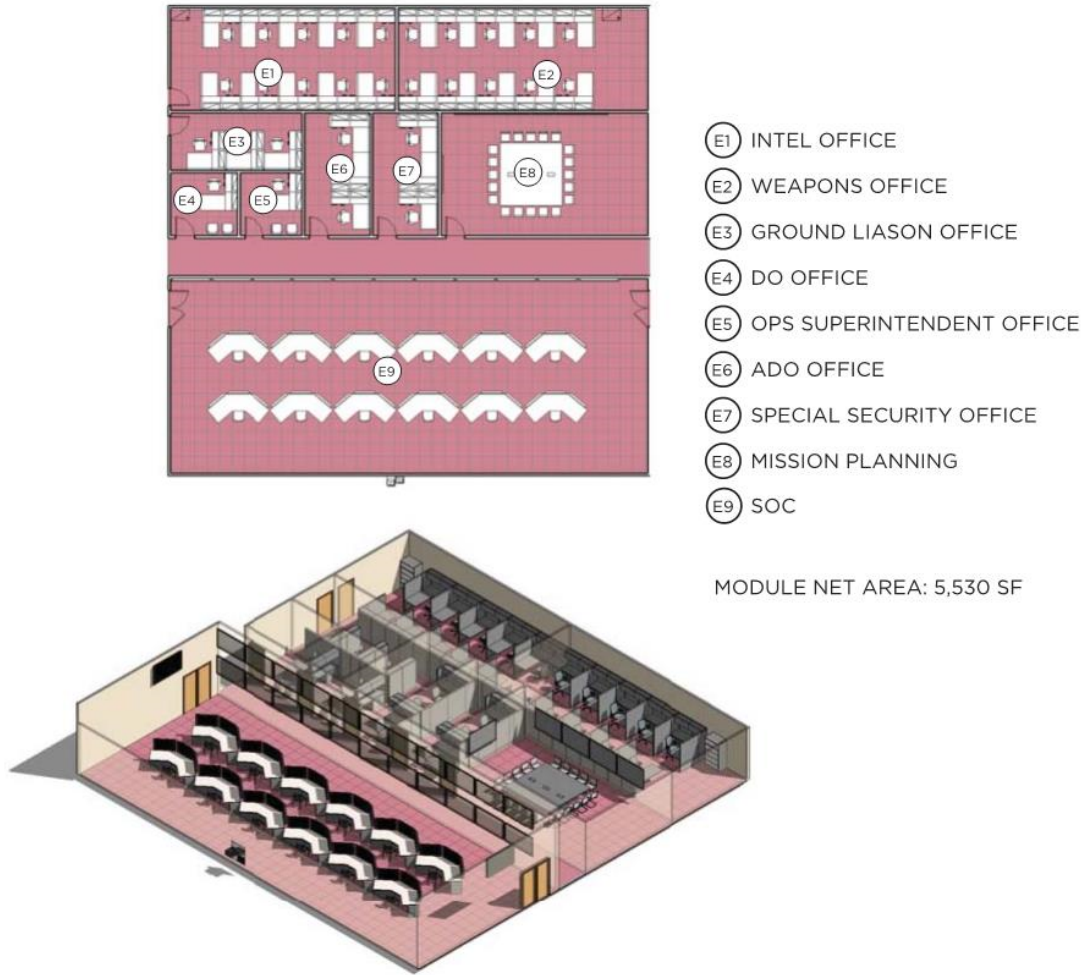


- (E1) INTEL OFFICE
 - (E2) WEAPONS OFFICE
 - (E3) GROUND LIASON OFFICE
 - (E4) DO OFFICE
 - (E5) OPS SUPERINTENDENT OFFICE
 - (E6) ADO OFFICE
 - (E7) SPECIAL SECURITY OFFICE
 - (E8) MISSION PLANNING
 - (E9) SOC
- PRIMARY ADJACENCY
 - PROXIMITY
 - ↔ DIRECT ACCESS
 - > DIRECT VIEW
 - ENCLOSED AREA
 - ▶ **ENTRY / EXIT**
 - B - BUILDING ENTRY
 - P - PERSONNEL ENTRY
 - E - EQUIPMENT / SERVICE ENTRY
 - EO - EXIT ONLY
- ADJACENT MODULES:
F - SERVER ROOM

DRAWINGS NOT TO SCALE

Squadron Operations Center

Figure 2-E.2 Module E Floor Plan & Axonometric



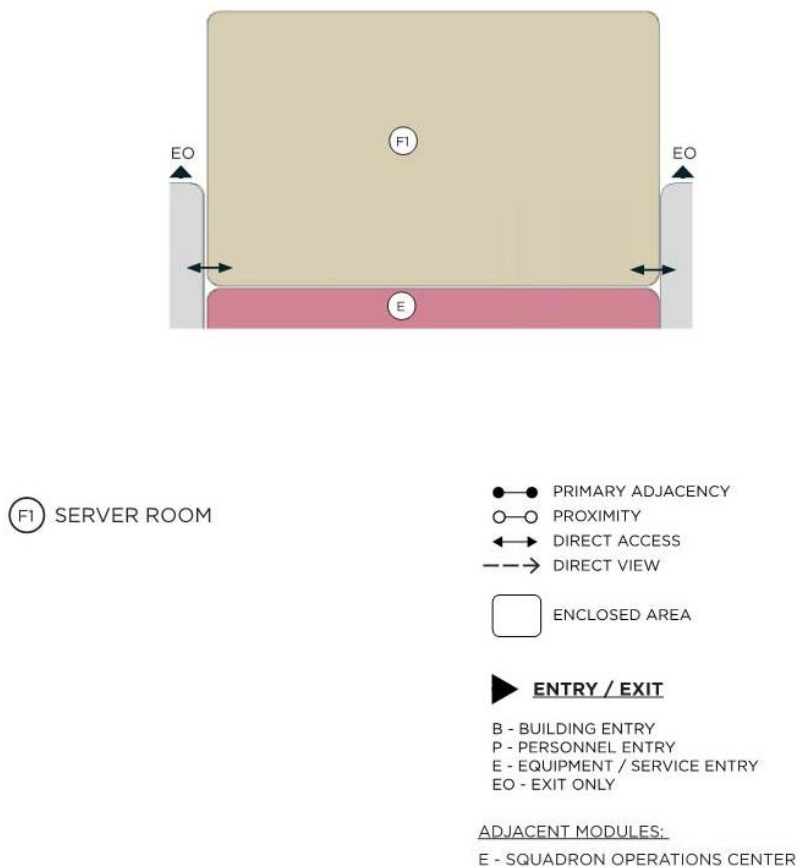
DRAWINGS NOT TO SCALE

MODULE F – SERVER ROOM

Function and Adjacency

The Server Room Module to serve 4 Block 50 Cockpits, one spare, one simulator and two mobile Cockpits. Facility is sized to hold up to 80 Server Racks (Block 50 Cockpits require approximately 10 server racks each). This room will have access flooring and is located at the rear of the building to accommodate future expansion. The Server Room Module is located within the secured area and must be within close proximity to the SOC Module.

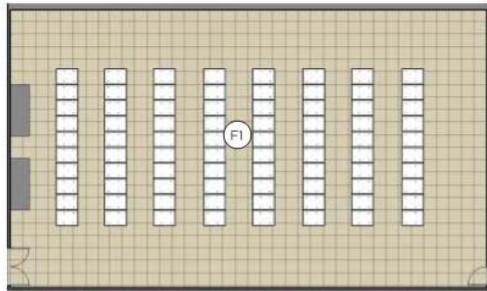
Figure 2-F.1 Module F Adjacency Diagram



DRAWINGS NOT TO SCALE

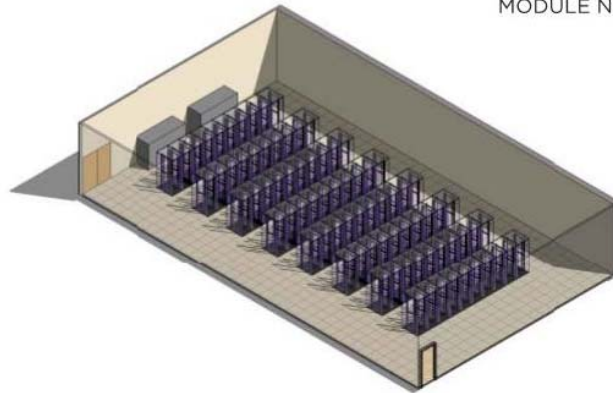
Server Room

Figure 2-F.2 Module F Floor Plan & Axonometric



Ⓛ SERVER ROOM

MODULE NET AREA: 3,270SF



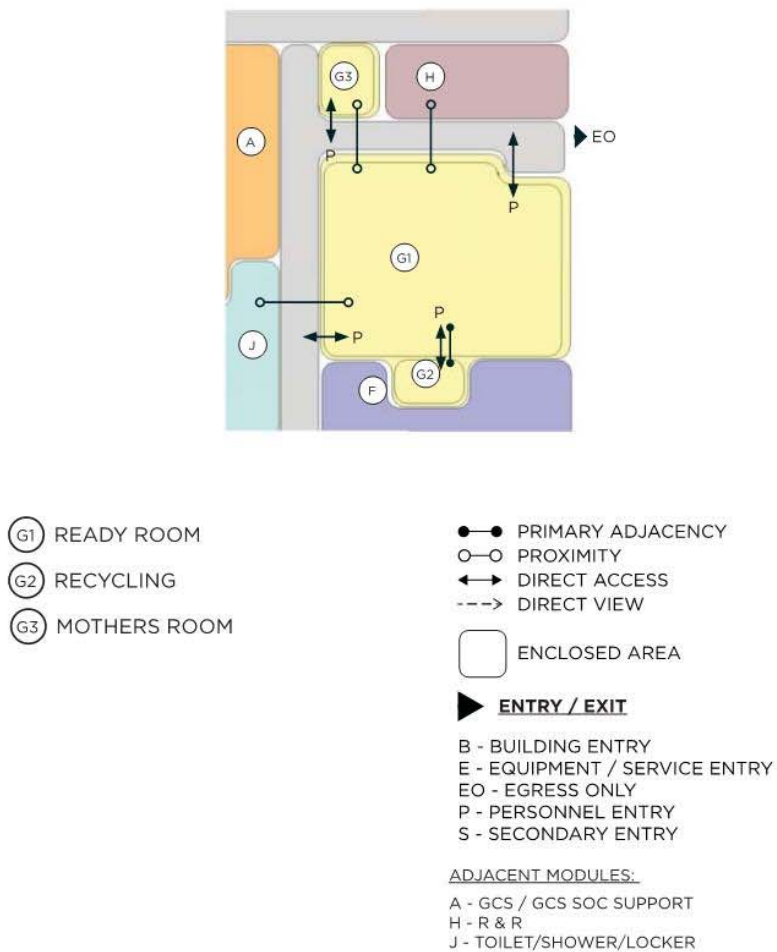
DRAWINGS NOT TO SCALE

MODULE G – READY ROOM MODULE

Function and Adjacency

The Ready Room Module includes one large room for informal meetings that also serves as a breakroom, a Recycling Room and a Mother’s Room. The Ready Room Module is located within the non-secure area of the facility.

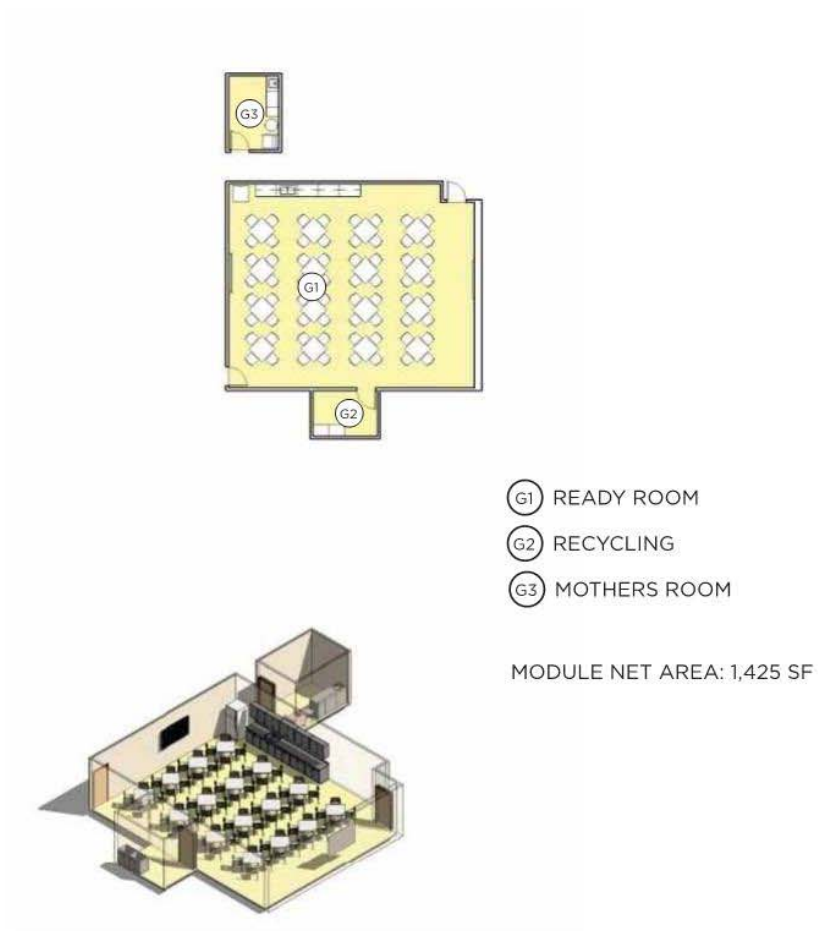
Figure 2-G.1 Module G Adjacency Diagram



DRAWINGS NOT TO SCALE

Ready Room

Figure 2-G.2 Module G Floor Plan & Axonometric

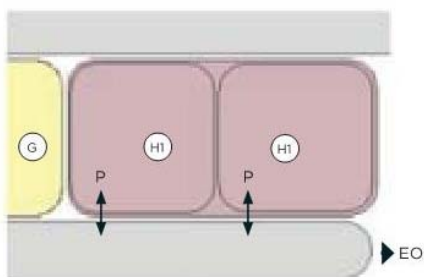


MODULE H – R&R MODULE

Function and Adjacency

The R & R (Rest & Relaxation) Module contains two Rest and Relaxation Rooms (one male and one female). The actual male/female ratio shall be confirmed at specific installation by the Authority Having Jurisdiction and the lazy-boy count shall be adjusted as required. The Rest Module is located within the non-secure area of the facility.

Figure 2-H.1 Module H Adjacency Diagram



(HI) REST & RELAXATION

- PRIMARY ADJACENCY
- PROXIMITY
- ↔ DIRECT ACCESS
- > DIRECT VIEW

□ ENCLOSED AREA

▶ **ENTRY / EXIT**

- B - BUILDING ENTRY
- E - EQUIPMENT / SERVICE ENTRY
- EO - EGRESS ONLY
- P - PERSONNEL ENTRY
- S - SECONDARY ENTRY

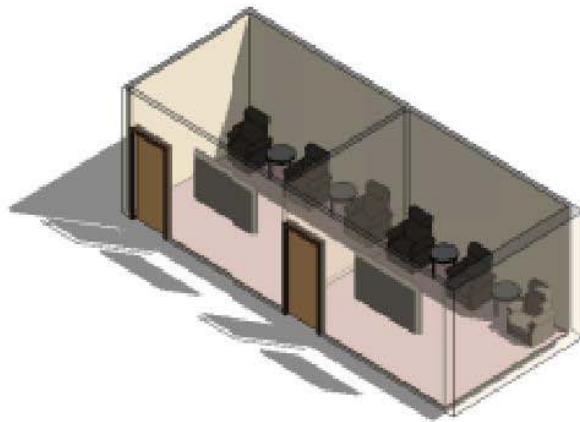
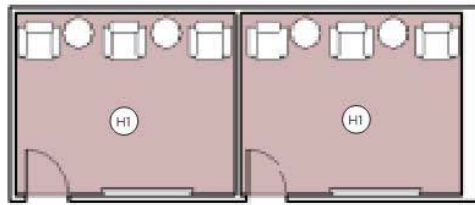
ADJACENT MODULES:

G - READY ROOM

DRAWINGS NOT TO SCALE

Rest

Figure 2-H.2 Module H Floor Plan & Axonometric



HI REST & RELAXATION MODULE NET AREA: 350 SF

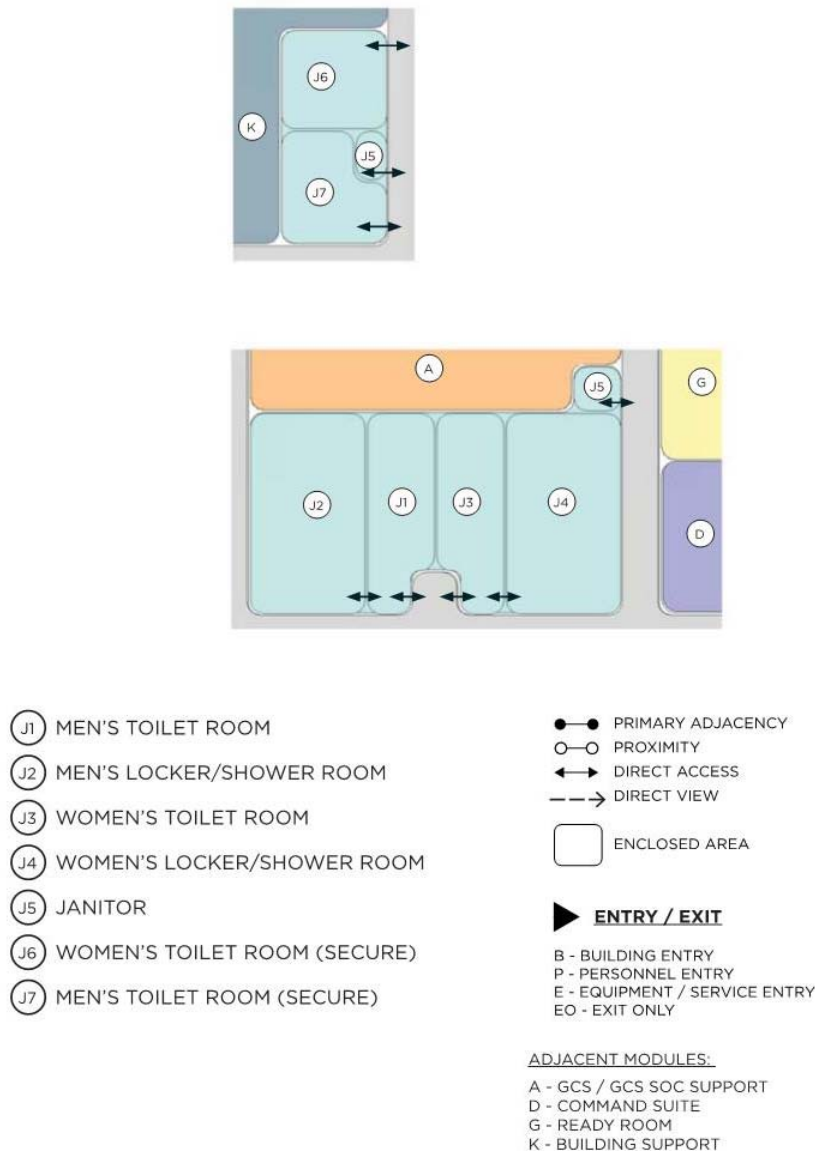
DRAWINGS NOT TO SCALE

MODULE J – TOILETS, SHOWER, LOCKERS

Function and Adjacency

This Module contains men’s and women’s restrooms located in both the secured and non-secure areas of the facility, a janitor’s closet and men’s and women’s locker room. The locker rooms are sized for the required shifts (approximately 120 personnel per shift with a 50/50 male/female ratio) and is located on the non-secure side of the facility for all employees to access. The actual male/female ratio shall be confirmed at specific installation by the Authority Having Jurisdiction and the fixture count, lockers, etc. shall be adjusted as required. The toilets only restrooms are located on the secure side of the facility. The plumbing fixture count in the Standard Design plan is approximate and actual plumbing fixture count shall be as required per actual occupancy count and as required in International Plumbing Codes, latest edition, Chapter 29.

Figure 2-J.1 Module J Adjacency Diagram



Toilets, Shower, Lockers

Figure 2-J.2 Module J Floor Plan & Axonometric



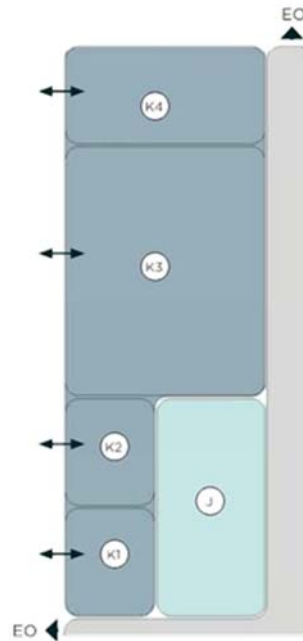
DRAWINGS NOT TO SCALE

MODULE K – BUILDING SUPPORT

Function and Adjacency

The Building Support Module consists of Mechanical, Electrical, Fire Pump, and Communications equipment for the facility. All rooms to have exterior access (with exception of Communications Room which may have interior access). These modules are located on exterior wall adjacent to a Utility Courtyard and accessible for maintenance. There will be secondary mechanical, electrical and communications rooms that are not indicated in the Standard Design plan as determined by design A/E.

Figure 2-K.1 Module K Adjacency Diagram



- (K1) COMMUNICATIONS
- (K2) ELECTRICAL
- (K3) MECHANICAL
- (K4) FIRE PUMP

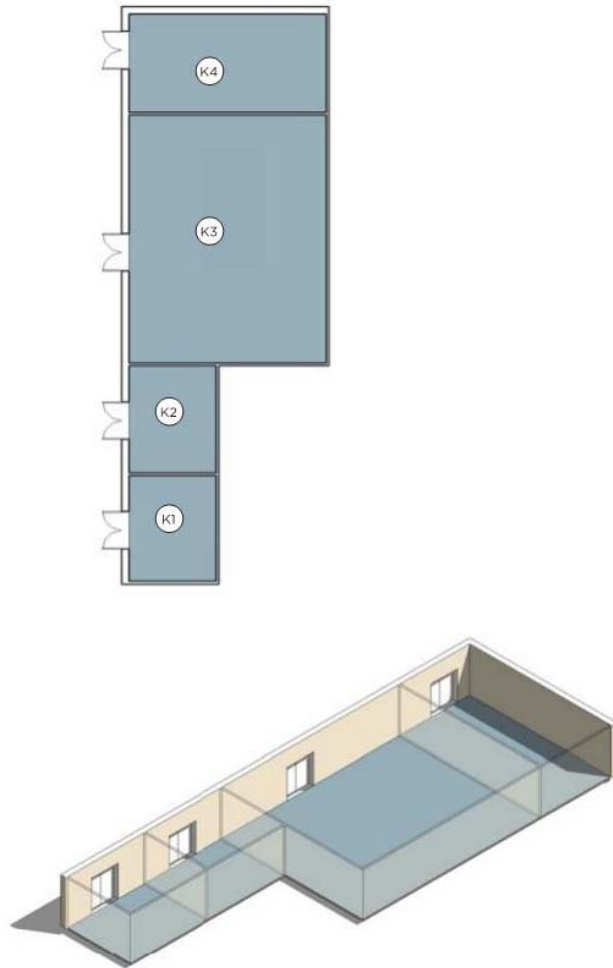
- PRIMARY ADJACENCY
- PROXIMITY
- ↔ DIRECT ACCESS
- - -> DIRECT VIEW
- ENCLOSED AREA
- ▶ **ENTRY / EXIT**
- B - BUILDING ENTRY
- P - PERSONNEL ENTRY
- E - EQUIPMENT / SERVICE ENTRY
- EO - EXIT ONLY

ADJACENT MODULES:

- J - TOILET/ SHOWER/ LOCKER

Building Support

Figure 2-K.2 Module K Floor Plan & Axonometric



- Ⓚ1 COMMUNICATIONS
- Ⓚ2 ELECTRICAL
- Ⓚ3 MECHANICAL
- Ⓚ4 FIRE PUMP

MODULE NET AREA: 2,230 SF

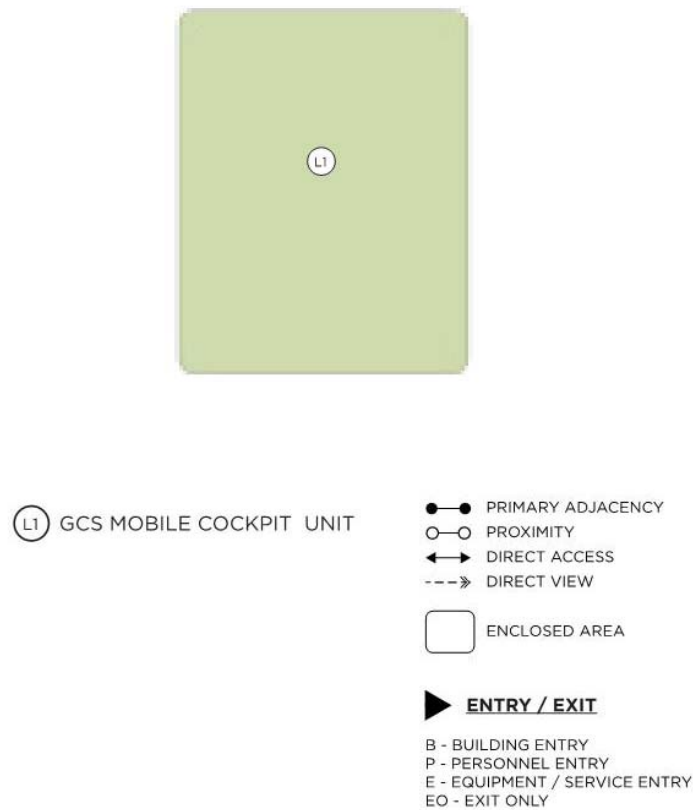
DRAWINGS NOT TO SCALE

MODULE L – GCS MOBILE COCKPIT UNIT MODULE

Function and Adjacency

The GCS Mobile Cockpit Unit Module includes a secure fenced area with security access and two covered Mobile Cockpit pads for two Mobile Cockpit Units and associated power, data and communications utilities. Pads will be concrete and large enough for the Mobile Cockpit, with step access, stability systems, etc.

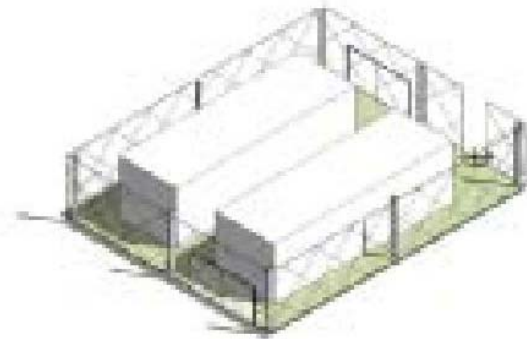
Figure 2-L.1 Module L Adjacency Diagram



DRAWINGS NOT TO SCALE

GCS Mobile Cockpit Unit

Figure 2-L.2 Module L Floor Plan & Axonometric



Ⓛ1 GCS MOBILE COCKPIT UNIT MODULE NET AREA: N/A SF

DRAWINGS NOT TO SCALE

2.4.E. Room Data Sheets

Specific requirements for each room, space, or area are provided on room data sheets that correspond to their respective color-coded Modules, basis of design Functional Adjacency Diagram as well as the Interactive Programming Worksheet. Information contained on the data sheets defines the functional and physical requirements for each of the spaces within the facility type and are generally minimum requirements and must be modified as required for specific unique situations/scenarios as deemed appropriate by the USAF.

Figure 2-A.3.1 Mass Briefing Room Data Sheet		
Index		A1
Description/Usage		Large briefing room with 176 chairs with fold-up desk, and has a raised stage platform (18" to 24" in height). This room is located within the 'Secure Area' of the building. This room shall be a column free space.
Ceiling Height		12'-0" minimum
Windows		No windows
Doors	Type	Hollow metal, (2) - Pair 3'x7'
	Security/ Hardware	Keyed lock set
	View Panels/ Kick Plates	View Panels, 5" x 20" Kick Plates both sides of door
Finishes	Walls	Gypsum Board - Painted
	Floor	Sealed concrete, Stained concrete, Tile, or Carpet Tile
	Base	Resilient or Tile
	Ceiling	Acoustical Ceiling Tile
Plumbing		N/A
HVAC		Heating, ventilation, air conditioning
Fire Protection		Wet pipe sprinkler system
Power		Per UFC; Connected to Backup Power
Lighting		Per UFC
Communication	Tele.	Per UFC
	Data	NIPR and SIPR per UFC
	CCTV	N/A
	CATV	N/A
	Security	IDS if space is deemed a TSWA
Acoustical Requirements		Per UFC 3-450-01 for Noise Control
Furnishings, Equipment and Casework		176 auditorium style chairs with foldup desk tops, podium, audio-visual system, wall mounted monitors (2), large projector screen and large white board at stage platform area wall.
Special Requirements		

Figure 2-A.3.2 Audio/Visual Room Data Sheet		
Index		A2
Description/Usage		Storage room for audio/visual storage, accessed from Mass Briefing Room. This room is located within the 'Secure Area' of the building.
Ceiling Height		9'-0" minimum
Windows		No windows
Doors	Type	Hollow metal, 3'x7'
	Security/ Hardware	Keyed lock set
	View Panels/ Kick Plates	No view panels
Kick Plates both sides of doors Finishes	Walls	Gypsum board - Painted
	Floor	Resilient Tile
	Base	Resilient Base
	Ceiling	Acoustical Ceiling Tile
Plumbing		N/A
HVAC		Heating, ventilation, air conditioning
Fire Protection		Wet pipe sprinkler system
Power		Per UFC
Lighting		Per UFC
Communication	Tele.	Per UFC
	Data	NIPR and SIPR per UFC
	CCTV	N/A
	CATV	N/A
		Security
Acoustical Requirements		Per UFC 3-450-01 for Noise Control
Furnishings, Equipment and Casework		Storage racks/shelving

Figure 2-A.3.3 Flight Commander / NCOIC Office Room Data Sheet		
Index		A3
Description/Usage		Open Office with 2 desks. This room is located within the 'Secure Area' of the building.
Ceiling Height		9'-0" minimum
Windows		No windows
Doors	Type	Hollow metal, 3'x7'
	Security/ Hardware	Keyed lock set
	View Panels/ Kick Plates	No view panels Kick Plates both sides of doors
Finishes	Walls	Gypsum Board - Painted
	Floor	Static Dissipative Resilient Tile over access system
	Base	Resilient
	Ceiling	Acoustical Ceiling Tile
Plumbing		N/A
HVAC		Heating, ventilation, air conditioning
Fire Protection		Wet pipe sprinkler system
Power		Per UFC; Connected to Backup Power
Lighting		Per UFC
Communication	Tele.	Per UFC
	Data	NIPR and SIPR per UFC
	CCTV	N/A
	CATV	N/A
	Security	N/A
Acoustical Requirements		Per UFC 3-450-01 for Noise Control
Furnishings, Equipment and Casework		(2) Workstations with chairs, (4) guest chairs, storage cabinets
Special Requirements		

Figure 2-A.3.4 GCS Briefing Room Data Sheet		
Index		A4
Description/Usage		Mission Briefing Room for Cockpit missions. This room is located within the 'Secure Area' of the building.
Ceiling Height		9'-0" minimum
Windows		No windows
Doors	Type	Hollow metal, 3'x7'
	Security/ Hardware	Keyed lock set
	View Panels/ Kick Plates	No view panels Kick Plates both sides of doors
Finishes	Walls	Gypsum board – Painted
	Floor	Resilient Tile
	Base	Resilient Base
	Ceiling	Acoustical Ceiling Tile
Plumbing		N/A
HVAC		Heating, ventilation, air conditioning
Fire Protection		Wet pipe sprinkler system
Power		Per UFC; Connected to Backup Power
Lighting		Per UFC
Communication	Tele.	Per UFC
	Data	Per UFC
	CCTV	N/A
	CATV	N/A
	Security	N/A
Acoustical Requirements		Per UFC 3-450-01 for Noise Control
Furnishings, Equipment and Casework		8-person conference table with chairs
Special Requirements		

Figure 2-A.3.5 Cockpit Room Data Sheet		
Index		A5
Description/Usage		This room contains the GCS unit and associated computer components. The GCS unit is operated by two-person team with space for a third person at small desk. The minimum size of this room is 16' x 16'. This room is located within the 'Secure Area' of the building.
Ceiling Height		10'-0" minimum
Windows		No windows
Doors	Type	Hollow metal, (1) - pair 3'x7'
	Security/ Hardware	X-10 high security lockset, card reader, electronic strike
	View Panels/ Kick Plates	No view panels Kick Plates both sides of doors
Finishes	Walls	Acoustical Ceiling Tile or Gypsum Board - Painted
	Floor	Static Dissipative Resilient Tile over access flooring system
	Base	Resilient
	Ceiling	Gypsum Board – Painted
Plumbing		N/A
HVAC		Heating, ventilation, air conditioning
Fire Protection		Wet pipe sprinkler system
Power		Per UFC; Connected to Backup Power
Lighting		Per UFC
Communication	Tele.	Per UFC
	Data	Per UFC
	CCTV	N/A
	CATV	N/A
	Security	Access Controls for Door
Acoustical Requirements		Per UFC 3-450-01 for Noise Control
Furnishings, Equipment and Casework		GCS equipment and computer system Government Furnished Government Installed.
Special Requirements		Access flooring system, 18" depth.

Figure 2-A.3.6 Simulator Room Data Sheet		
Index		A6
Description/Usage		This room contains the Simulator unit and associated computer components. The simulator unit is operated by two-person team with space for a third person at small desk. The minimum size of this room is 16' x 16'. This room is located within the 'Secure Area' of the building.
Ceiling Height		10'-0" minimum
Windows		No windows
Doors	Type	Hollow metal, (1) - pair 3'x7'
	Security/ Hardware	X-10 high security lockset, card reader, electronic strike
	View Panels/ Kick Plates	No view panels Kick Plates both sides of doors
Finishes	Walls	Acoustical Ceiling Tile or Gypsum Board - Painted
	Floor	Static Dissipative Resilient Tile over access flooring system
	Base	Resilient
	Ceiling	Gypsum Board – Painted
Plumbing		N/A
HVAC		Heating, ventilation, air conditioning
Fire Protection		Wet pipe sprinkler system
Power		Per UFC; Connected to Backup Power
Lighting		Per UFC
Communication	Tele.	Per UFC
	Data	Per UFC
	CCTV	N/A
	CATV	N/A
	Security	Access Controls for Door
Acoustical Requirements		Per UFC 3-450-01 for Noise Control
Furnishings, Equipment and Casework		GCS equipment and computer system Government Furnished Government Installed.
Special Requirements		Access flooring system, 18" depth.

Figure 2- A.3.7 Spare Room Data Sheet		
Index		A7
Description/Usage		This room is a spare room and can be used as a back-up Simulator unit and associated computer components or a future Cockpit. The minimum size of this room is 16' x 16'. This room is located within the 'Secure Area' of the building.
Ceiling Height		10'-0" minimum
Windows		No windows
Doors	Type	Hollow metal, (1) - pair 3'x7'
	Security/ Hardware	X-10 high security lockset, card reader, electronic strike
	View Panels/ Kick Plates	No view panels Kick Plates both sides of doors
Finishes	Walls	Gypsum Board - Painted
	Floor	Static Dissipative Resilient Tile over access flooring system
	Base	Resilient
	Ceiling	Acoustical Ceiling Tile or Gypsum Board – Painted
Plumbing		N/A
HVAC		Heating, ventilation, air conditioning
Fire Protection		Wet pipe sprinkler system
Power		Per UFC; Connected to Backup Power
Lighting		Per UFC
Communication	Tele.	Per UFC
	Data	Per UFC
	CCTV	N/A
	CATV	N/A
	Security	Access Controls for Door
Acoustical Requirements		Per UFC 3-450-01 for Noise Control
Furnishings, Equipment and Casework		(1) Desk and chairs for 2 Staff Personnel, (1) Small desk and chair for 1 Staff Person. GCS equipment and computer system Government Furnished Government Installed.
Special Requirements		Access flooring system, 18" depth.

Figure 2-A.3.8 IOS Simulator Operators Room Data Sheet		
Index		A8
Description/Usage		Room for Simulator Operator staff. This room is located within the 'Secure Area' of the building.
Ceiling Height		9'-0" minimum
Windows		No windows
Doors	Type	Hollow metal, 3'x7'
	Security/ Hardware	Keyed lock set
	View Panels/ Kick Plates	No view panels Kick Plates both sides of doors
Finishes	Walls	Gypsum board – Painted
	Floor	Resilient Tile
	Base	Resilient Base
	Ceiling	Acoustical Ceiling Tile
Plumbing		N/A
HVAC		Heating, ventilation, air conditioning
Fire Protection		Wet pipe sprinkler system
Power		Per UFC; Connected to Backup Power
Lighting		Per UFC
Communication	Tele.	Per UFC
	Data	Per UFC
	CCTV	N/A
	CATV	N/A
	Security	N/A
Acoustical Requirements		Per UFC 3-450-01 for Noise Control
Furnishings, Equipment and Casework		3) Small desks and chair for 1 Staff Person each
Special Requirements		

Figure 2-B.3.1 Tool CTK Room Data Sheet		
Index		B1
Description/Usage		This room is the Tool Room for the GCS communications equipment and maintenance. This room is located within the 'Secure Area' of the building. 2 desks for Tool Room Attendants.
Ceiling Height		9'-0" minimum
Windows		No windows
Doors	Type	Hollow metal, 3'x7'
	Security/ Hardware	Key lock set
	View Panels/ Kick Plates	No view panels Kick Plates on both sides of doors
Finishes	Walls	Gypsum Board – Painted
	Floor	Sealed concrete, Stained concrete or Tile
	Base	Resilient or Tile
	Ceiling	Acoustical Ceiling Tile or Exposed Structure - Painted
Plumbing		N/A
HVAC		Heating, ventilation, air conditioning
Fire Protection		Wet pipe sprinkler system
Power		Per UFC; Connected to Backup Power
Lighting		Per UFC
Communication	Tele.	Per UFC
	Data	NIPR Per UFC
	CCTV	N/A
	CATV	N/A
	Security	Access Controls for Door
Acoustical		Per UFC 3-450-01 for Noise Control
Furnishings, Equipment and Casework		(16-18) Storage shelves/ work benches, (1) Small desk and chair
Special Requirements		

Figure 2-B.3.2 Production Office Room Data Sheet		
Index		B2
Description/Usage		Open Office with 5 work stations. This room is located within the 'Secure Area' of the building.
Ceiling Height		9'-0" minimum
Windows		No windows
Doors	Type	Hollow metal, 3'x7'
	Security/ Hardware	Keyed lock set
	View Panels/ Kick Plates	View Panels, 5"x20" Kick Plates both sides of doors
Finishes	Walls	Gypsum Board – Painted
	Floor	Sealed concrete, Stained concrete or Tile
	Base	Resilient or Tile
	Ceiling	Acoustical Ceiling Tile
Plumbing		N/A
HVAC		Heating, ventilation, air conditioning
Fire Protection		Wet pipe sprinkler system
Power		Per UFC; Connected to Backup Power
Lighting		Per UFC
Communication	Tele.	Per UFC
	Data	NIPR Per UFC
	CCTV	N/A
	CATV	N/A
	Security	N/A
Acoustical Requirements		Per UFC 3-450-01 for Noise Control
Furnishings, Equipment and Casework		(5) workstations with chairs and storage cabinets.
Special Requirements		

Figure 2-B.3.3 Section Chief Office Room Data Sheet		
Index		B3
Description/Usage		Open Office with 2 workstations. This room is located within the 'Secure Area' of the building.
Ceiling Height		9'-0" minimum
Windows		No windows
Doors	Type	Hollow metal, 3'x7'
	Security/ Hardware	Keyed lock set
	View Panels/ Kick Plates	No view panels Kick Plates on both sides of doors
Finishes	Walls	Gypsum Board – Painted
	Floor	Sealed concrete, Stained concrete or Tile
	Base	Resilient or Tile
	Ceiling	Acoustical Ceiling Tile
Plumbing		N/A
HVAC		Heating, ventilation, air conditioning
Fire Protection		Wet pipe sprinkler system
Power		Per UFC; Connected to Backup Power
Lighting		Per UFC
Communication	Tele.	Per UFC
	Data	NIPR and SIPR Per UFC
	CCTV	N/A
	CATV	N/A
	Security	N/A
Acoustical		Per UFC 3-450-01 for Noise Control
Furnishings, Equipment and Casework		(2) workstations with chairs, and storage cabinets.
Special Requirements		

Figure 2-B.3.4 OIC Office Room Data Sheet		
Index		B4
Description/Usage		Office with 1 workstation. This room is located within the 'Secure Area' of the building.
Ceiling Height		9'-0" minimum
Windows		No windows
Doors	Type	Hollow metal, 3'x7'
	Security/ Hardware	Keyed lock set
	View Panels/ Kick Plates	No view panels Kick Plates on both sides of doors
Finishes	Walls	Gypsum Board – Painted
	Floor	Sealed concrete, Stained concrete or Tile
	Base	Resilient or Tile
	Ceiling	Acoustical Ceiling Tile
Plumbing		N/A
HVAC		Heating, ventilation, air conditioning
Fire Protection		Wet pipe sprinkler system
Power		Per UFC; Connected to Backup Power
Lighting		Per UFC
Communication	Tele.	Per UFC
	Data	NIPR and SIPR Per UFC
	CCTV	N/A
	CATV	N/A
	Security	N/A
Acoustical		Per UFC 3-450-01 for Noise Control
Furnishings, Equipment and Casework		(1) workstation with chair, (1) guest chair and storage cabinets.
Special Requirements		

Figure 2-B.3.5 Supervisor Office Room Data Sheet		
Index		B5
Description/Usage		Office with 1 workstation. This room is located within the 'Secure Area' of the building.
Ceiling Height		9'-0" minimum
Windows		No windows
Doors	Type	Hollow metal, 3'x7'
	Security/ Hardware	Keyed lock set
	View Panels/ Kick Plates	No view panels Kick Plates on both sides of doors
Finishes	Walls	Gypsum Board – Painted
	Floor	Sealed concrete, Stained concrete or Tile
	Base	Resilient or Tile
	Ceiling	Acoustical Ceiling Tile
Plumbing		N/A
HVAC		Heating, ventilation, air conditioning
Fire Protection		Wet pipe sprinkler system
Power		Per UFC; Connected to Backup Power
Lighting		Per UFC
Communication	Tele.	Per UFC
	Data	NIPR and SIPR Per UFC
	CCTV	N/A
	CATV	N/A
	Security	N/A
Acoustical		Per UFC 3-450-01 for Noise Control
Furnishings, Equipment and Casework		(1) workstation with chair, (1) guest chair and storage cabinets.
Special Requirements		

Figure 2-B.3.6 RPA Comms Office Room Data Sheet		
Index		B6
Description/Usage		Open Office with 2 workstations. This room is located within the 'Secure Area' of the building.
Ceiling Height		9'-0" minimum
Windows		No windows
Doors	Type	Hollow metal, 3'x7'
	Security/ Hardware	Keyed lock set
	View Panels/ Kick Plates	No view panels Kick Plates on both sides of doors
Finishes	Walls	Gypsum Board – Painted
	Floor	Sealed concrete, Stained concrete or Tile
	Base	Resilient or Tile
	Ceiling	Acoustical Ceiling Tile
Plumbing		N/A
HVAC		Heating, ventilation, air conditioning
Fire Protection		Wet pipe sprinkler system
Power		Per UFC; Connected to Backup Power
Lighting		Per UFC
Communication	Tele.	Per UFC
	Data	NIPR and SIPR Per UFC
	CCTV	N/A
	CATV	N/A
	Security	N/A
Acoustical		Per UFC 3-450-01 for Noise Control
Furnishings, Equipment and Casework		(2) workstations with chairs and storage cabinets.
Special Requirements		

Figure 2-B.3.7 Maintenance Administration Office Data Sheet		
Index		B7
Description/Usage		Open Office with 9 workstations. This room is located within the 'Secure Area' of the building.
Ceiling Height		9'-0" minimum
Windows		No windows
Doors	Type	Hollow metal, 3'x7'
	Security/ Hardware	Keyed lock set
	View Panels/ Kick Plates	No view panels Kick Plates on both sides of doors
Finishes	Walls	Gypsum Board – Painted
	Floor	Sealed concrete, Stained concrete or Tile
	Base	Resilient or Tile
	Ceiling	Acoustical Ceiling Tile
Plumbing		N/A
HVAC		Heating, ventilation, air conditioning
Fire Protection		Wet pipe sprinkler system
Power		Per UFC; Connected to Backup Power
Lighting		Per UFC
Communication	Tele.	Per UFC
	Data	NIPR Per UFC
	CCTV	N/A
	CATV	N/A
	Security	N/A
Acoustical		Per UFC 3-450-01 for Noise Control
Furnishings, Equipment and Casework		(9) workstations with chairs
Special Requirements		

Figure 2-B.3.8 Conference Room Data Sheet		
Index		B8
Description/Usage		Conference room with conference table for 8. This room is located within the 'Secure Area' of the building.
Ceiling Height		9'-0" minimum
Windows		No windows
Doors	Type	Hollow metal, 3'x7'
	Security/ Hardware	Keyed lock set
	View Panels/ Kick Plates	No view panels Kick Plates on both sides of doors
Finishes	Walls	Gypsum Board – Painted
	Floor	Sealed concrete, Stained concrete or Tile
	Base	Resilient or Tile
	Ceiling	Acoustical Ceiling Tile
Plumbing		N/A
HVAC		Heating, ventilation, air conditioning
Fire Protection		Wet pipe sprinkler system
Power		Per UFC; Connected to Backup Power
Lighting		Per UFC
Communication	Tele.	Per UFC
	Data	NIPR Per UFC
	CCTV	N/A
	CATV	N/A
	Security	N/A
Acoustical		Per UFC 3-450-01 for Noise Control
Furnishings, Equipment and Casework		8-person conference table with chairs, marker board
Special Requirements		

Figure 2-B.3.9 Tech Room Data Sheet		
Index		B9
Description/Usage		Open work Tech area with 4 workstations. This room is located within the 'Secure Area' of the building.
Ceiling Height		9'-0" minimum
Windows		No windows
Doors	Type	Hollow metal, 3'x7'
	Security/ Hardware	Keyed lock set
	View Panels/ Kick Plates	No view panels Kick Plates on both sides of doors
Finishes	Walls	Gypsum Board – Painted
	Floor	Sealed concrete, Stained concrete or Tile
	Base	Resilient or Tile
	Ceiling	Acoustical Ceiling Tile
Plumbing		N/A
HVAC		Heating, ventilation, air conditioning
Fire Protection		Wet pipe sprinkler system
Power		Per UFC; Connected to Backup Power
Lighting		Per UFC
Communication	Tele.	Per UFC
	Data	NIPR Per UFC
	CCTV	N/A
	CATV	N/A
	Security	N/A
Acoustical		Per UFC 3-450-01 for Noise Control
Furnishings, Equipment and Casework		(4) workstations with chair, (3) Work bench/storage cabinets.
Special Requirements		

Figure 2-C.3.1 Security Office Room Data Sheet		
Index		C1
Description/Usage		Open Office with 9 workstations. This room is located within the 'Non-Secure Area' of the building.
Ceiling Height		9'-0" minimum
Windows		Exterior -Aluminum framed, insulated fixed, blast resistant; Meet daylighting requirements of UFC 1-200-02
Doors	Type	Hollow metal, 3'x7'
	Security/ Hardware	Keyed lock set
	View Panels/ Kick Plates	View Panels, 5" x 20" Kick Plates both sides of door
Finishes	Walls	Systems furniture, Demountable Partitions or Gyp. Board -Painted
	Floor	Sealed concrete, Stained concrete, Tile, or Carpet Tile
	Base	Resilient or Tile
	Ceiling	Acoustical Ceiling Tile
Plumbing		N/A
HVAC		Heating, ventilation, air conditioning
Fire Protection		Wet pipe sprinkler system
Power		Per UFC; Connected to Backup Power
Lighting		Per UFC
Communication	Tele.	Per UFC
	Data	NIPR and SIPR Per UFC
	CCTV	N/A
	CATV	N/A
	Security	N/A
Acoustical Requirements		Per UFC 3-450-01 for Noise Control
Furnishings, Equipment and Casework		(7) workstations with chairs and storage cabinets
Special Requirements		

Figure 2-C.3.2 SARM Office Room Data Sheet		
Index		C2
Description/Usage		Open Office with 4 workstations. This room is located within the 'Non-Secure Area' of the building.
Ceiling Height		9'-0" minimum
Windows		Exterior -Aluminum framed, insulated fixed, blast resistant; Meet daylighting requirements of UFC 1-200-02
Doors	Type	Hollow metal, 3'x7'
	Security/ Hardware	Keyed lock set
	View Panels/ Kick Plates	View Panels, 5" x 20" Kick Plates on both sides of door
Finishes	Walls	Systems furniture, Demountable partitions or Gypsum Board - Painted
	Floor	Sealed concrete, Stained concrete, Tile or Carpet Tile
	Base	Resilient or Tile
	Ceiling	Acoustical Ceiling Tile
Plumbing		N/A
HVAC		Heating, ventilation, air conditioning
Fire Protection / Life Safety		Wet pipe sprinkler system
Power		Per UFC
Lighting		Per UFC
Communication	Tele.	Per UFC
	Data	NIPR Per UFC
	CCTV	N/A
	CATV	N/A
	Security	N/A
Acoustical		Per UFC 3-450-01 for Noise Control
Furnishings / Equipment / Casework		(4) workstations with chairs
Special Requirements		

Figure 2-C.3.3 OPS Supervisor Office Room Data Sheet		
Index		C3
Description/Usage		Office with 2 workstations. This room is located within the 'Non-Secure Area' of the building.
Ceiling Height		9'-0" minimum
Windows		Exterior -Aluminum framed, insulated fixed, blast resistant; Meet daylighting requirements of UFC 1-200-02
Doors	Type	Hollow metal, 3'x7'
	Security/ Hardware	Keyed lock set
	View Panels/ Kick Plates	View Panels, 5" x 20" Kick Plates on both sides of door
Finishes	Walls	Systems furniture, Demountable partitions or Gypsum Board - Painted
	Floor	Sealed concrete, Stained concrete, Tile or Carpet Tile
	Base	Resilient or Tile
	Ceiling	Acoustical Ceiling Tile
Plumbing		N/A
HVAC		Heating, ventilation, air conditioning
Fire Protection / Life Safety		Wet pipe sprinkler system
Power		Per UFC
Lighting		Per UFC
Communication	Tele.	Per UFC
	Data	NIPR Per UFC
	CCTV	N/A
	CATV	N/A
	Security	N/A
Acoustical		Per UFC 3-450-01 for Noise Control
Furnishings / Equipment / Casework		(2) workstation with chairs
Special Requirements		

Figure 2-C.3.4 SARM Room Data Sheet		
Index		C4
Description/Usage		Open Office with 3 workstations. This room is located within the 'Non-Secure Area' of the building.
Ceiling Height		9'-0" minimum
Windows		Exterior -Aluminum framed, insulated fixed, blast resistant; Meet daylighting requirements of UFC 1-200-02
Doors	Type	Hollow metal, 3'x7'
	Security/ Hardware	Keyed lock set
	View Panels/ Kick Plates	View Panels, 5" x 20" Kick Plates on both sides of door
Finishes	Walls	Systems furniture, Demountable partitions or Gypsum Board - Painted
	Floor	Sealed concrete, Stained concrete, Tile or Carpet Tile
	Base	Resilient or Tile
	Ceiling	Acoustical Ceiling Tile
Plumbing		N/A
HVAC		Heating, ventilation, air conditioning
Fire Protection / Life Safety		Wet pipe sprinkler system
Power		Per UFC
Lighting		Per UFC
Communication	Tele.	Per UFC
	Data	NIPR Per UFC
	CCTV	N/A
	CATV	N/A
	Security	N/A
Acoustical		Per UFC 3-450-01 for Noise Control
Furnishings / Equipment / Casework		(3) workstations and chairs
Special Requirements		

Figure 2-C.3.5 Scheduling Office Room Data Sheet		
Index		C5
Description/Usage		Open Office with 11 workstations. This room is located within the 'Non-Secure Area' of the building.
Ceiling Height		9'-0" minimum
Windows		Exterior -Aluminum framed, insulated fixed, blast resistant; Meet daylighting requirements of UFC 1-200-02
Doors	Type	Hollow metal, 3'x7'
	Security/ Hardware	Keyed lock set
	View Panels/ Kick Plates	View Panels, 5" x 20" Kick Plates on both sides of door
Finishes	Walls	Systems furniture, Demountable partitions or Gypsum Board - Painted
	Floor	Sealed concrete, Stained concrete, Tile or Carpet Tile
	Base	Resilient or Tile
	Ceiling	Acoustical Ceiling Tile
Plumbing		N/A
HVAC		Heating, ventilation, air conditioning
Fire Protection / Life Safety		Wet pipe sprinkler system
Power		Per UFC
Lighting		Per UFC
Communication	Tele.	Per UFC
	Data	NIPR Per UFC
	CCTV	N/A
	CATV	N/A
	Security	N/A
Acoustical		Per UFC 3-450-01 for Noise Control
Furnishings / Equipment / Casework		(11) workstations with chairs and storage cabinets.
Special Requirements		

Figure 2-C.3.6 Training Room Data Sheet		
Index		C6
Description/Usage		Open Office with 11 workstations. This room is located within the 'Non-Secure Area' of the building.
Ceiling Height		9'-0" minimum
Windows		Exterior -Aluminum framed, insulated fixed, blast resistant; Meet daylighting requirements of UFC 1-200-02
Doors	Type	Hollow metal, 3'x7'
	Security/ Hardware	Keyed lock set
	View Panels/ Kick Plates	View Panels, 5" x 20" Kick Plates on both sides of door
Finishes	Walls	Systems furniture, Demountable partitions or Gypsum Board - Painted
	Floor	Sealed concrete, Stained concrete, Tile or Carpet Tile
	Base	Resilient or Tile
	Ceiling	Acoustical Ceiling Tile
Plumbing		N/A
HVAC		Heating, ventilation, air conditioning
Fire Protection / Life Safety		Wet pipe sprinkler system
Power		Per UFC
Lighting		Per UFC
Communication	Tele.	Per UFC
	Data	NIPR Per UFC
	CCTV	N/A
	CATV	N/A
	Security	N/A
Acoustical		Per UFC 3-450-01 for Noise Control
Furnishings / Equipment / Casework		(11) workstations with chairs and storage cabinets.
Special Requirements		

Figure 2-C.3.7 STANDARDS/EVALUATION Room Data Sheet		
Index		C7
Description/Usage		Open Office with 11 workstations. This room is located within the 'Non-Secure Area' of the building.
Ceiling Height		9'-0" minimum
Windows		Exterior -Aluminum framed, insulated fixed, blast resistant; Meet daylighting requirements of UFC 1-200-02
Doors	Type	Hollow metal, 3'x7'
	Security/ Hardware	Keyed lock set
	View Panels/ Kick Plates	View Panels, 5" x 20" Kick Plates on both sides of door
Finishes	Walls	Systems furniture, Demountable partitions or Gypsum Board - Painted
	Floor	Sealed concrete, Stained concrete, Tile or Carpet Tile
	Base	Resilient or Tile
	Ceiling	Acoustical Ceiling Tile
Plumbing		N/A
HVAC		Heating, ventilation, air conditioning
Fire Protection / Life Safety		Wet pipe sprinkler system
Power		Per UFC
Lighting		Per UFC
Communication	Tele.	Per UFC
	Data	NIPR Per UFC
	CCTV	N/A
	CATV	N/A
	Security	N/A
Acoustical		Per UFC 3-450-01 for Noise Control
Furnishings / Equipment / Casework		(11) workstations with chairs
Special Requirements		

Figure 2-C.3.8 Testing Room Data Sheet		
Index		C8
Description/Usage		Open Office with 11 workstations. This room is located within the 'Non-Secure Area' of the building.
Ceiling Height		9'-0" minimum
Windows		Exterior -Aluminum framed, insulated fixed, blast resistant; Meet daylighting requirements of UFC 1-200-02
Doors	Type	Hollow metal, 3'x7'
	Security/ Hardware	Keyed lock set
	View Panels/ Kick Plates	View Panels, 5" x 20" Kick Plates on both sides of door
Finishes	Walls	Systems furniture, Demountable partitions or Gypsum Board - Painted
	Floor	Sealed concrete, Stained concrete, Tile or Carpet Tile
	Base	Resilient or Tile
	Ceiling	Acoustical Ceiling Tile or Exposed structure - Painted
Plumbing		N/A
HVAC		Heating, ventilation, air conditioning
Fire Protection / Life Safety		Wet pipe sprinkler system
Power		Per UFC
Lighting		Per UFC
Communication	Tele.	Per UFC
	Data	NIPR Per UFC
	CCTV	N/A
	CATV	N/A
	Security	N/A
Acoustical		Per UFC 3-450-01 for Noise Control
Furnishings / Equipment / Casework		(11) workstations with chairs
Special Requirements		

Figure 2-D.3.1 Dwell Open Office Room Data Sheet		
Index		D1
Description/Usage		Open office area with 7 work stations. This room is located within the 'Non-Secure Area' of the building.
Ceiling Height		9'-0" minimum
Windows		Exterior - Aluminum framed, insulated fixed, blast resistant; Meet daylighting requirements of UFC 1-200-02
Doors	Type	Hollow metal, 3'x7'
	Security/ Hardware	Keyed lock set
	View Panels/ Kick Plates	View Panels, 5" x 20" Kick Plates on both sides of door
Finishes	Walls	Gypsum Board - Painted
	Floor	Sealed concrete, Stained concrete, tile or Carpet Tile
	Base	Resilient or Tile
	Ceiling	Acoustical Ceiling Tile
Plumbing		N/A
HVAC		Heating, ventilation, air conditioning
Fire Protection / Life Safety		Wet pipe sprinkler system
Power		Per UFC
Lighting		Per UFC
Communication	Tele.	Per UFC
	Data	NIPR Per UFC
	CCTV	N/A
	CATV	N/A
	Security	Intrusion Detection System (IDS)
Acoustical		Per UFC 3-450-01 for Noise Control
Furnishings / Equipment / Casework		(7) workstations and chairs
Special Requirements		

Figure 2-D.3.2 General Administration Room Data Sheet		
Index		D2
Description/Usage		Open office area with 4 work stations. This room is located within the 'Non-Secure Area' of the building.
Ceiling Height		9'-0" minimum
Windows		Exterior - Aluminum framed, insulated fixed, blast resistant; Meet daylighting requirements of UFC 1-200-02
Doors	Type	Hollow metal, 3'x7'
	Security/ Hardware	Keyed lock set
	View Panels/ Kick Plates	View Panels, 5" x 20" Kick Plates on both sides of door
Finishes	Walls	Gypsum Board - Painted
	Floor	Sealed concrete, Stained concrete, tile or Carpet Tile
	Base	Resilient or Tile
	Ceiling	Acoustical Ceiling Tile
Plumbing		N/A
HVAC		Heating, ventilation, air conditioning
Fire Protection / Life Safety		Wet pipe sprinkler system
Power		Per UFC
Lighting		Per UFC
Communication	Tele.	Per UFC
	Data	NIPR Per UFC
	CCTV	N/A
	CATV	N/A
	Security	Intrusion Detection System (IDS)
Acoustical		Per UFC 3-450-01 for Noise Control
Furnishings / Equipment / Casework		(4) workstations and chairs
Special Requirements		

Figure 2-D.3.3 Director Office Room Data Sheet		
Index		D3
Description/Usage		Office with one workstation. This room is located within the 'Non-Secure Area' of the building.
Ceiling Height		9'-0" minimum
Windows		Exterior – Aluminum framed, insulated fixed, blast resistant; Meet daylighting requirements of UFC 1-200-02
Doors	Type	Hollow metal, 3'x7'
	Security/ Hardware	Keyed lock set
	View Panels/ Kick Plates	View Panels, 5"x 20" Kick Plates both sides of door
Finishes	Walls	Systems furniture, Demountable Partitions or Gyp. Board -Painted
	Floor	Sealed concrete, Stained concrete, Tile, or Carpet Tile
	Base	Resilient or Tile
	Ceiling	Acoustical Ceiling Tile or Exposed Structure – Painted
Plumbing		N/A
HVAC		Heating, ventilation, air conditioning
Fire Protection		Wet pipe sprinkler system
Power		Per UFC
Lighting		Per UFC
Communication	Tele.	Per UFC
	Data	NIPR Per UFC
	CCTV	N/A
	CATV	N/A
	Security	N/A
Acoustical Requirements		Per UFC 3-450-01 for Noise Control
Furnishings, Equipment and Casework		(1) workstation with chair, (2) guest chairs
Special Requirements		

Figure 2-D.3.4 Chief Enlisted Manager Office Room Data Sheet		
Index		D4
Description/Usage		Private Office with one desk. This room is located within the 'Non-Secure Area' of the building.
Ceiling Height		9'-0" minimum
Windows		Exterior – Aluminum framed, insulated fixed, blast resistant; Meet daylighting requirements of UFC 1-200-02
Doors	Type	Hollow metal, 3'x7'
	Security/ Hardware	Keyed lock set
	View Panels/ Kick Plates	View Panels, 5"x 20" Kick Plates both sides of door
Finishes	Walls	Systems furniture, Demountable Partitions or Gyp. Board -Painted
	Floor	Sealed concrete, Stained concrete, Tile, or Carpet Tile
	Base	Resilient or Tile
	Ceiling	Acoustical Ceiling Tile
Plumbing		N/A
HVAC		Heating, ventilation, air conditioning
Fire Protection		Wet pipe sprinkler system
Power		Per UFC
Lighting		Per UFC
Communication	Tele.	Per UFC
	Data	NIPR Per UFC
	CCTV	N/A
	CATV	N/A
	Security	N/A
Acoustical Requirements		Per UFC 3-450-01 for Noise Control
Furnishings, Equipment and Casework		(1) desk with chair, (2) guest chairs
Special Requirements		

Figure 2-D.3.5 Secretary Office Room Data Sheet		
Index		D5
Description/Usage		Office with one workstation. This room is located within the 'Non-Secure Area' of the building adjacent to Commander's Office.
Ceiling Height		9'-0" minimum
Windows		Exterior – Aluminum framed, insulated fixed, blast resistant; Meet daylighting requirements of UFC 1-200-02
Doors	Type	Hollow metal, 3'x7'
	Security/ Hardware	Keyed lock set
	View Panels/ Kick Plates	View Panels, 5"x 20" Kick Plates both sides of door
Finishes	Walls	Systems furniture, Demountable Partitions or Gyp. Board -Painted
	Floor	Sealed concrete, Stained concrete, Tile, or Carpet Tile
	Base	Resilient or Tile
	Ceiling	Acoustical Ceiling Tile
Plumbing		N/A
HVAC		Heating, ventilation, air conditioning
Fire Protection		Wet pipe sprinkler system
Power		Per UFC
Lighting		Per UFC
Communication	Tele.	Per UFC
	Data	NIPR Per UFC
	CCTV	N/A
	CATV	N/A
	Security	N/A
Acoustical Requirements		Per UFC 3-450-01 for Noise Control
Furnishings, Equipment and Casework		(1) workstation with chair, (2) guest chairs
Special Requirements		

Figure 2-D.3.6 Commander Office Room Data Sheet		
Index		D6
Description/Usage		Private Office with one desk and conference table. This room is located within the 'Non-Secure Area' of the building.
Ceiling Height		9'-0" minimum
Windows		Exterior – Aluminum framed, insulated fixed, blast resistant; Meet daylighting requirements of UFC 1-200-02
Doors	Type	Hollow metal, 3'x7'
	Security/ Hardware	Keyed lock set
	View Panels/ Kick Plates	View Panels, 5"x 20" Kick Plates both sides of door
Finishes	Walls	Systems furniture, Demountable Partitions or Gyp. Board -Painted
	Floor	Sealed concrete, Stained concrete, Tile, or Carpet Tile
	Base	Resilient or Tile
	Ceiling	Acoustical Ceiling Tile
Plumbing		N/A
HVAC		Heating, ventilation, air conditioning
Fire Protection		Wet pipe sprinkler system
Power		Per UFC
Lighting		Per UFC
Communication	Tele.	Per UFC
	Data	NIPR Per UFC
	CCTV	N/A
	CATV	N/A
	Security	N/A
Acoustical Requirements		Per UFC 3-450-01 for Noise Control
Furnishings, Equipment and Casework		(1) workstation with chair, (2) guest chairs, 4-Person Conference table
Special Requirements		

Figure 2-D.3.7 Conference Room Data Sheet		
Index		D7
Description/Usage		Large Conference Room for Command Suite with large conference table for 16 and 14-16 additional chairs. This room is located within the 'Non-Secure Area' of the building adjacent to Commander's Office.
Ceiling Height		9'-0" minimum
Windows		Exterior- Aluminum framed, insulated fixed, blast resistant; Meet daylighting requirements of UFC 1-200-02 if located on exterior wall
Doors	Type	Hollow metal, 3'x7'
	Security/ Hardware	Keyed lock set
	View Panels/ Kick Plates	View Panels, 5" x 20" and side lite, 12" wide Kick Plates on both sides of door
Finishes	Walls	Systems furniture, Demountable partitions or Gypsum Board - Painted
	Floor	Carpet Tile
	Base	Resilient
	Ceiling	Acoustical Ceiling Tile
Plumbing		N/A
HVAC		Heating, ventilation, air conditioning
Fire Protection / Life Safety		Wet pipe sprinkler system
Power		Per UFC
Lighting		Per UFC
Communication	Tele.	Per UFC
	Data	NIPR Per UFC
	CCTV	N/A
	CATV	N/A
	Security	N/A
Acoustical		Per UFC 3-450-01 for Noise Control
Furnishings / Equipment / Casework		Conference table for 16, 14-16 extra chairs at wall, small workstation, audio-visual equipment and (1) flat screen monitor , marker board.
Special Requirements		

Figure 2-D.3.8 Administration Support Room Data Sheet		
Index		D8
Description/Usage		Room for printing , storage and miscellaneous administration efforts. This room is located within the 'Non-Secure Area' of the building adjacent to conference room.
Ceiling Height		9'-0" minimum
Windows		N/A
Doors	Type	Hollow metal, 3'x7'
	Security/ Hardware	Keyed lock set
	View Panels/ Kick Plates	View Panels, 5" x 20" and side lite, 12" wide Kick Plates on both sides of door
Finishes	Walls	Systems furniture, Demountable partitions or Gypsum Board - Painted
	Floor	Carpet Tile
	Base	Resilient
	Ceiling	Acoustical Ceiling Tile
Plumbing		N/A
HVAC		Heating, ventilation, air conditioning
Fire Protection / Life Safety		Wet pipe sprinkler system
Power		Per UFC
Lighting		Per UFC
Communication	Tele.	Per UFC
	Data	NIPR Per UFC
	CCTV	N/A
	CATV	N/A
	Security	N/A
Acoustical		Per UFC 3-450-01 for Noise Control
Furnishings / Equipment / Casework		Upper and lower storage cabinets with counter, marker board/bulletin board
Special Requirements		

Figure 2-D.3.9 Human Performance Team Room Data Sheet		
Index		D9
Description/Usage		Open office area with 3 work stations. This room is located within the 'Non-Secure Area' of the building.
Ceiling Height		9'-0" minimum
Windows		Exterior - Aluminum framed, insulated fixed, blast resistant; Meet daylighting requirements of UFC 1-200-02
Doors	Type	Hollow metal, 3'x7'
	Security/ Hardware	Keyed lock set
	View Panels/ Kick Plates	View Panels, 5" x 20" Kick Plates on both sides of door
Finishes	Walls	Gypsum Board - Painted
	Floor	Sealed concrete, Stained concrete, tile or Carpet Tile
	Base	Resilient or Tile
	Ceiling	Acoustical Ceiling Tile
Plumbing		N/A
HVAC		Heating, ventilation, air conditioning
Fire Protection / Life Safety		Wet pipe sprinkler system
Power		Per UFC
Lighting		Per UFC
Communication	Tele.	Per UFC
	Data	NIPR Per UFC
	CCTV	N/A
	CATV	N/A
	Security	Intrusion Detection System (IDS)
Acoustical		Per UFC 3-450-01 for Noise Control
Furnishings / Equipment / Casework		(3) workstations and chairs
Special Requirements		

Figure 2-E.3.1 Intelligence Office Room Data Sheet		
Index		E1
Description/Usage		Open Office with 10 workstations. This room is located within the 'Secure Area' of the building.
Ceiling Height		9'-0" minimum
Windows		No windows
Doors	Type	Hollow metal, 3'x7'
	Security/ Hardware	Keyed lock set
	View Panels/ Kick Plates	No view panels Kick Plates both sides of door
Finishes	Walls	Gypsum Board -Painted
	Floor	Static Dissipative Resilient tile over access system
	Base	Resilient
	Ceiling	Acoustical Ceiling Tile
Plumbing		N/A
HVAC		Heating, ventilation, air conditioning
Fire Protection		Wet pipe sprinkler system
Power		Per UFC; Connected to Backup Power
Lighting		Per UFC
Communication	Tele.	Per UFC
	Data	NIPR and SIPR Per UFC
	CCTV	N/A
	CATV	N/A
	Security	N/A
Acoustical Requirements		Per UFC 3-450-01 for Noise Control
Furnishings, Equipment and Casework		(10) workstations with chairs
Special Requirements		Access flooring system, 18" depth.

Figure 2-E.3.1 Weapons Office Room Data Sheet		
Index		E2
Description/Usage		Open Office with 10 workstations. This room is located within the 'Secure Area' of the building.
Ceiling Height		9'-0" minimum
Windows		No windows
Doors	Type	Hollow metal, 3'x7'
	Security/ Hardware	Keyed lock set
	View Panels/ Kick Plates	No view panels Kick Plates both sides of door
Finishes	Walls	Gypsum Board -Painted
	Floor	Static Dissipative Resilient tile over access system
	Base	Resilient
	Ceiling	Acoustical Ceiling Tile
Plumbing		N/A
HVAC		Heating, ventilation, air conditioning
Fire Protection		Wet pipe sprinkler system
Power		Per UFC; Connected to Backup Power
Lighting		Per UFC
Communication	Tele.	Per UFC
	Data	NIPR and SIPR Per UFC
	CCTV	N/A
	CATV	N/A
	Security	N/A
Acoustical Requirements		Per UFC 3-450-01 for Noise Control
Furnishings, Equipment and Casework		(10) workstations with chairs
Special Requirements		Access flooring system, 18" depth.

Figure 2-E.3.3 Ground Liaison Office Room Data Sheet		
Index	E3	
Description/Usage	Open Office with 3 workstations. This room is located within the 'Secure Area' of the building.	
Ceiling Height	9'-0" minimum	
Windows	No windows	
Doors	Type	Hollow metal, 3'x7'
	Security/ Hardware	Keyed lock set
	View Panels/ Kick Plates	No view panels Kick Plates both sides of door
Finishes	Walls	Gypsum Board - Painted
	Floor	Static Dissipative Resilient tile over access system
	Base	Resilient
	Ceiling	Acoustical Ceiling Tile
Plumbing	N/A	
HVAC	Heating, ventilation, air conditioning	
Fire Protection	Wet pipe sprinkler system	
Power	Per UFC; Connected to Backup Power	
Lighting	Per UFC	
Communication	Tele.	Per UFC
	Data	NIPR and SIPR Per UFC
	CCTV	N/A
	CATV	N/A
	Security	N/A
Acoustical Requirements	Per UFC 3-450-01 for Noise Control	
Furnishings, Equipment and Casework	(3) workstations with chairs	
Special Requirements	Access flooring system, 18" depth.	

Figure 2-E.3.4 DO Office Room Data Sheet		
Index		E4
Description/Usage		Office with one workstation. This room is located within the 'Secure Area' of the building.
Ceiling Height		9'-0" minimum
Windows		No windows
Doors	Type	Hollow metal, 3'x7'
	Security/ Hardware	Keyed lock set
	View Panels/ Kick Plates	No view panels Kick Plates both sides of door
Finishes	Walls	Gypsum Board -Painted
	Floor	Static Dissipative Resilient tile over access system
	Base	Resilient
	Ceiling	Acoustical Ceiling Tile
Plumbing		N/A
HVAC		Heating, ventilation, air conditioning
Fire Protection		Wet pipe sprinkler system
Power		Per UFC; Connected to Backup Power
Lighting		Per UFC
Communication	Tele.	Per UFC
	Data	NIPR and SIPR Per UFC
	CCTV	N/A
	CATV	N/A
	Security	N/A
Acoustical Requirements		Per UFC 3-450-01 for Noise Control
Furnishings, Equipment and Casework		(1) workstation with chair, (2) guest chairs
Special Requirements		Access flooring system, 18" depth.

Figure 2-E.3.5 Operations Supervisor Office Room Data Sheet		
Index		E5
Description/Usage		Office with one workstation. This room is located within the 'Secure Area' of the building.
Ceiling Height		9'-0" minimum
Windows		No windows
Doors	Type	Hollow metal, 3'x7'
	Security/ Hardware	Keyed lock set
	View Panels/ Kick Plates	No view panels Kick Plates both sides of door
Finishes	Walls	Gypsum Board -Painted
	Floor	Static Dissipative Resilient tile over access system
	Base	Resilient
	Ceiling	Acoustical Ceiling Tile
Plumbing		N/A
HVAC		Heating, ventilation, air conditioning
Fire Protection		Wet pipe sprinkler system
Power		Per UFC; Connected to Backup Power
Lighting		Per UFC
Communication	Tele.	Per UFC
	Data	NIPR and SIPR Per UFC
	CCTV	N/A
	CATV	N/A
	Security	N/A
Acoustical Requirements		Per UFC 3-450-01 for Noise Control
Furnishings, Equipment and Casework		(1) workstation with chair, (2) guest chairs
Special Requirements		Access flooring system, 18" depth.

Figure 2-E.3.6 ADO Office Room Data Sheet		
Index		E6
Description/Usage		Open Office with three workstations. This room is located within the 'Secure Area' of the building.
Ceiling Height		9'-0" minimum
Windows		No windows
Doors	Type	Hollow metal, 3'x7'
	Security/ Hardware	Keyed lock set
	View Panels/ Kick Plates	No view panels Kick Plates both sides of door
Finishes	Walls	Gypsum Board -Painted
	Floor	Static Dissipative Resilient tile over access system
	Base	Resilient
	Ceiling	Acoustical Ceiling Tile
Plumbing		N/A
HVAC		Heating, ventilation, air conditioning
Fire Protection		Wet pipe sprinkler system
Power		Per UFC; Connected to Backup Power
Lighting		Per UFC
Communication	Tele.	Per UFC
	Data	NIPR and SIPR Per UFC
	CCTV	N/A
	CATV	N/A
	Security	N/A
Acoustical Requirements		Per UFC 3-450-01 for Noise Control
Furnishings, Equipment and Casework		(3) workstations with chairs
Special Requirements		Access flooring system, 18" depth.

Figure 2-E.3.7 Special Security Office Room Data Sheet		
Index	E7	
Description/Usage	Open Office with three workstations. This room is located within the 'Secure Area' of the building.	
Ceiling Height	9'-0" minimum	
Windows	No windows	
Doors	Type	Hollow metal, 3'x7'
	Security/ Hardware	Keyed lock set
	View Panels/ Kick Plates	No view panels Kick Plates both sides of door
Finishes	Walls	Gypsum Board -Painted
	Floor	Static Dissipative Resilient tile over access system
	Base	Resilient
	Ceiling	Acoustical Ceiling Tile
Plumbing	N/A	
HVAC	Heating, ventilation, air conditioning	
Fire Protection	Wet pipe sprinkler system	
Power	Per UFC; Connected to Backup Power	
Lighting	Per UFC	
Communication	Tele.	Per UFC
	Data	NIPR and SIPR Per UFC
	CCTV	N/A
	CATV	N/A
	Security	N/A
Acoustical Requirements	Per UFC 3-450-01 for Noise Control	
Furnishings, Equipment and Casework	(3) workstations with chairs	
Special Requirements	Access flooring system, 18" depth.	

Figure 2-E.3.8 Mission Planning Office Room Data Sheet		
Index		E8
Description/Usage		Workspace with 10'x10' mission planning table, chairs. Wall mounted flat screen monitors. This room is located within the 'Secure Area' of the building.
Ceiling Height		9'-0" minimum
Windows		No windows
Doors	Type	Hollow metal, 3'x7'
	Security/ Hardware	Keyed lock set
	View Panels/ Kick Plates	No view panels Kick Plates both sides of door
Finishes	Walls	Gypsum Board -Painted
	Floor	Static Dissipative Resilient tile over access system
	Base	Resilient
	Ceiling	Acoustical Ceiling Tile
Plumbing		N/A
HVAC		Heating, ventilation, air conditioning
Fire Protection		Wet pipe sprinkler system
Power		Per UFC; Connected to Backup Power
Lighting		Per UFC
Communication	Tele.	Per UFC
	Data	NIPR and SIPR Per UFC
	CCTV	N/A
	CATV	N/A
	Security	N/A
Acoustical Requirements		Per UFC 3-450-01 for Noise Control
Furnishings, Equipment and Casework		10'x10' mission planning table with map storage, (20) chairs, flat screen monitor, marker board
Special Requirements		Access flooring system, 18" depth.

Figure 2-E.3.9 SOC Room Data Sheet		
Index		E9
Description/Usage		The SOC (Squadron Operations Center) is a secure classified area managing Combat Air Patrol missions. There are 12 workstations facing double stacked flat screen monitors. This room is located within the 'Secure Area' of the building.
Ceiling Height		14'-0" minimum
Windows		No windows
Doors	Type	Hollow metal, (2) – Pair 3'x7'
	Security/ Hardware	X-10 high security lockset, card reader, electronic strike
	View Panels/ Kick Plates	No view panels Kick Plates both sides of door
Finishes	Walls	Gypsum Board -Painted
	Floor	Static Dissipative Resilient tile over access system
	Base	Resilient
	Ceiling	Acoustical Ceiling Tile
Plumbing		N/A
HVAC		Heating, ventilation, air conditioning
Fire Protection		Wet pipe sprinkler system
Power		Per UFC; Connected to Backup Power
Lighting		Per UFC
Communication	Tele.	Per UFC
	Data	NIPR and SIPR Per UFC
	CCTV	N/A
	CATV	N/A
	Security	Intrusion Detection and Access Controls
Acoustical Requirements		Per UFC 3-450-01 for Noise Control
Furnishings, Equipment and Casework		24 double stacked 80" monitors mounted high for unobstructed viewing from workstations; (12) Government Furnished Government Installed workstations.
Special Requirements		Access flooring system, 18" depth.

Figure 2-F.3.1 Server Room Data Sheet		
Index		F1
Description/Usage		Computer server room for serving Cockpit Modules. This room is located within the 'Secure Area' of the building.
Ceiling Height		12'-0" minimum
Windows		No windows
Doors	Type	Hollow metal, (1) - Pair 3'x7'
	Security/ Hardware	X-10 high security lockset, card reader, electronic strike
	View Panels/ Kick Plates	No view panels Kick Plates both sides of door
Finishes	Walls	Gypsum Board - Painted
	Floor	Static Dissipative Resilient tile over access system
	Base	Resilient
	Ceiling	Acoustical Ceiling Tile
Plumbing		N/A
HVAC		Heating, ventilation, air conditioning. Dedicated CRAC Units (2N redundancy)
Fire Protection		Wet pipe sprinkler system
Power		Per UFC; Connected to Backup Power & UPS
Lighting		Per UFC
Communication	Tele.	Per UFC
	Data	NIPR and SIPR per UFC
	CCTV	N/A
	CATV	N/A
	Security	Intrusion Detection and Access Controls
Acoustical Requirements		Per UFC 3-450-01 for Noise Control
Furnishings, Equipment and Casework		Government Furnished Government Installed computer server system, 80 racks, UPS, etc.
Special Requirements		Access flooring system, 18" depth. Coordinate with User for UPS and data rack configuration

Figure 2-G.3.1 Ready Room Data Sheet		
Index		G1
Description/Usage		The Ready Room is used for entire facility with counter, cabinets, sink, microwave, and refrigerator. Wall mounted flat screen monitors for cable TV. This room is located within the 'Non-Secure Area' of the building.
Ceiling Height		9'-0" minimum
Windows		Exterior -Aluminum framed, insulated fixed, blast resistant; Meet daylighting requirements of UFC 1-200-02
Doors	Type	Hollow metal, 3'x7'
	Security/ Hardware	Keyed lock set
	View Panels/ Kick Plates	View Panels, 5"x20" Kick Plates both sides of door
Finishes	Walls	Gypsum Board – Painted
	Floor	Sealed concrete, Stained concrete, Resinous Epoxy or Tile
	Base	Resilient or Resinous Epoxy or Tile
	Ceiling	Acoustical Ceiling Tile
Plumbing		Sink with disposal
HVAC		Heating, ventilation, air conditioning
Fire Protection		Wet pipe sprinkler system
Power		120v dedicated circuits for coffee maker, microwave, & refrigerator; 120v convenience outlets per UFC 3-520-01
Lighting		Per UFC
Communication	Tele.	Per UFC
	Data	N/A
	CCTV	N/A
	CATV	Per user requirements
	Security	N/A
Acoustical Requirements		Per UFC 3-450-01 for Noise Control
Furnishings, Equipment and Casework		Counter, cabinets with sink, microwave, refrigerator. Wall mounted flat screen monitors (2), bulletin board, (16) tables with 4 chairs each.
Special Requirements		

Figure 2-G.3.2 Recycling Room Data Sheet		
Index	G2	
Description/Usage	The Recycling Room is used for entire facility with counter, and disposal area / containers for recyclable materials. This room is located within the 'Non-Secure Area' of the building.	
Ceiling Height	9'-0" minimum	
Windows	Exterior -Aluminum framed, insulated fixed, blast resistant	
Doors	Type	Hollow metal, 3'x7'
	Security/ Hardware	Keyed lock set
	View Panels/ Kick Plates	View Panels, 5"x20" Kick Plates both sides of door
Finishes	Walls	Gypsum Board – Painted
	Floor	Sealed concrete, Stained concrete, Resinous Epoxy or Tile
	Base	Resilient or Resinous Epoxy or Tile
	Ceiling	Acoustical Ceiling Tile
Plumbing	Sink with disposal	
HVAC	Heating, ventilation, air conditioning	
Fire Protection	Wet pipe sprinkler system	
Power	120v dedicated circuits for coffee maker, microwave, & refrigerator; 120v convenience outlets per UFC 3-520-01	
Lighting	Per UFC	
Communication	Tele.	Per UFC
	Data	N/A
	CCTV	N/A
	CATV	Per user requirements
	Security	N/A
Acoustical Requirements	Per UFC 3-450-01 for Noise Control	
Furnishings, Equipment and Casework	Counter, cabinets	
Special Requirements		

Figure 2-G.3.3 Mother's Room		
Index		G3
Description/Usage		Room with recliner chair, side table, small counter with sink and under counter refrigerator.
Ceiling Height		9'-0" minimum
Windows		No windows
Doors	Type	Hollow metal, 3'x7'
	Security/ Hardware	Keyed lock set
	View Panels/ Kick Plates	No View Panels Kick Plates both sides of door
Finishes	Walls	Systems furniture, Demountable Partitions or Gyp. Board -Painted
	Floor	Sealed concrete, Stained concrete, Tile, or Carpet Tile
	Base	Resilient or Tile
	Ceiling	Acoustical Ceiling Tile
Plumbing		Sink, single bowl
HVAC		Heating, ventilation, air conditioning
Fire Protection		Wet pipe sprinkler system
Power		Per UFC
Lighting		Per UFC
Communication	Tele.	Per UFC
	Data	Per UFC
	CCTV	N/A
	CATV	N/A
	Security	N/A
Acoustical Requirements		Per UFC 3-450-01 for Noise Control
Furnishings, Equipment and Casework		Recliner chair, side table, under counter refrigerator.
Special Requirements		

Figure 2-H.3.1 R & R Room Data Sheet		
Index		H1
Description/Usage		Male and/or Female Rest & Relaxation Rooms with lazy-boys
Ceiling Height		9'-0" minimum
Windows		No windows
Doors	Type	Hollow metal, 3'x7'
	Security/ Hardware	Keyed lock set
	View Panels/ Kick Plates	View Panels, 5"x20" Kick Plates both sides of door
Finishes	Walls	Systems furniture, Demountable Partitions or Gyp. Board -Painted
	Floor	Sealed concrete, Stained concrete, Tile, or Carpet Tile
	Base	Resilient or Tile
	Ceiling	Acoustical Ceiling Tile or Exposed Structure – Painted
Plumbing		N/A
HVAC		Heating, ventilation, air conditioning
Fire Protection		Wet pipe sprinkler system
Power		Per UFC; Connected to Backup Power
Lighting		Per UFC
Communication	Tele.	Per UFC
	Data	Per UFC
	CCTV	N/A
	CATV	N/A
	Security	N/A
Acoustical Requirements		Per UFC 3-450-01 for Noise Control
Furnishings, Equipment and Casework		(3) 'Lazy-Boys' per room with 2 side tables and LED monitor
Special Requirements		

Figure 2-J.3.1 Men's Toilet Room Data Sheet		
Index		J1
Description/Usage		Toilet room serving all male personnel in the facility. This room is located within the 'Non-Secure Area' of the building.
Ceiling Height		9'-0" minimum
Windows		N/A
Doors	Type	Hollow metal, 3'x7'
	Security/ Hardware	Push-pull
	View Panels/ Kick Plates	No view panels Kick Plates both sides of doors
Finishes	Walls	Ceramic tile full height at wet walls; Gypsum Board - Painted
	Floor	Tile or Resinous Epoxy
	Base	Tile or Resinous Epoxy
	Ceiling	Gypsum Board - Painted
Plumbing		Sinks; toilets; urinals; floor drains in restroom areas
HVAC		Air Conditioned and heated restroom
Fire Protection		Wet pipe sprinkler system
Power		Per UFC
Lighting		Per UFC
Communication	Tele.	N/A
	Data	N/A
	CCTV	N/A
	CATV	N/A
	Security	N/A
Acoustical Requirements		Per UFC 3-450-01 for Noise Control
Furnishings, Equipment and Casework		Fixture count shall be determined by number of building occupants at maximum load per International Plumbing Code latest edition, Chapter 29; wall hung water closets and urinals; lavatories in counter tops.
Special Requirements		Water resistant gypsum board throughout. See RFP for accessories requirements.

Figure 2-J.3.2 Men's Shower/Locker Room Data Sheet		
Index		J2
Description/Usage		Shower/Locker room serving all male personnel in the facility. This room is located within the 'Non-Secure Area' of the building.
Ceiling Height		9'-0" minimum
Windows		N/A
Doors	Type	Hollow metal, 3'x7'
	Security/ Hardware	Push-pull
	View Panels/ Kick Plates	No view panels Kick Plates both sides of doors
Finishes	Walls	Ceramic tile full height at wet walls, showers, Gypsum Board - Painted
	Floor	Tile or Resinous Epoxy
	Base	Tile or Resinous Epoxy
	Ceiling	Gypsum Board - Painted
Plumbing		Showers, floor drains
HVAC		Air Conditioned and heated restrooms, showers, lockers; ventilation; exhaust from restrooms, locker rooms.
Fire Protection		Wet pipe sprinkler system
Power		Per UFC
Lighting		Per UFC
Communication	Tele.	N/A
	Data	N/A
	CCTV	N/A
	CATV	N/A
	Security	N/A
Acoustical Requirements		Per UFC 3-450-01 for Noise Control
Furnishings, Equipment and Casework		Fixture count shall be determined by number of building occupants at maximum load per International Plumbing Code latest edition, Chapter 29 ; Double stacked lockers in locker areas.
Special Requirements		Water resistant gypsum board throughout. See RFP for accessories requirements.

Figure 2-J.3.3 Women's Toilet Room Data Sheet		
Index		J3
Description/Usage		Toilet room serving all female personnel in the facility. This room is located within the 'Non-Secure Area' of the building.
Ceiling Height		9'-0" minimum
Windows		N/A
Doors	Type	Hollow metal, 3'x7'
	Security/ Hardware	Push-pull
	View Panels/ Kick Plates	No view panels Kick Plates both sides of doors
Finishes	Walls	Ceramic tile full height at wet walls; Gypsum Board - Painted
	Floor	Tile or Resinous Epoxy
	Base	Tile or Resinous Epoxy
	Ceiling	Gypsum Board - Painted
Plumbing		Sinks; toilets; floor drains in restroom areas
HVAC		Air Conditioned and heated restroom
Fire Protection		Wet pipe sprinkler system
Power		Per UFC
Lighting		Per UFC
Communication	Tele.	N/A
	Data	N/A
	CCTV	N/A
	CATV	N/A
	Security	N/A
Acoustical Requirements		Per UFC 3-450-01 for Noise Control
Furnishings, Equipment and Casework		Fixture count shall be determined by number of building occupants at maximum load per International Plumbing Code latest edition, Chapter 29; wall hung water closets; lavatories in counter tops.
Special Requirements		Water resistant gypsum board throughout. See RFP for accessories requirements.

Figure 2-J.3.4 Women's Shower/Locker Room Data Sheet		
Index	J4	
Description/Usage	Shower/Locker room serving all female personnel in the facility. This room is located within the 'Non-Secure Area' of the building.	
Ceiling Height	9'-0" minimum	
Windows	N/A	
Doors	Type	Hollow metal, 3'x7'
	Security/ Hardware	Push-pull
	View Panels/ Kick Plates	No view panels Kick Plates both sides of doors
Finishes	Walls	Ceramic tile full height at wet walls, showers, Gypsum Board - Painted
	Floor	Tile or Resinous Epoxy
	Base	Tile or Resinous Epoxy
	Ceiling	Gypsum Board - Painted
Plumbing	Showers, floor drains	
HVAC	Air Conditioned and heated restrooms, showers, lockers; ventilation; exhaust from restrooms, locker rooms.	
Fire Protection	Wet pipe sprinkler system	
Power	Per UFC	
Lighting	Per UFC	
Communication	Tele.	N/A
	Data	N/A
	CCTV	N/A
	CATV	N/A
	Security	N/A
Acoustical Requirements	Per UFC 3-450-01 for Noise Control	
Furnishings, Equipment and Casework	Fixture count shall be determined by number of building occupants at maximum load per International Plumbing Code latest edition, Chapter 29; Double stacked lockers within locker areas.	
Special Requirements	Water resistant gypsum board throughout. See RFP for accessories requirements.	

Figure 2-J.3.5 Janitor Room Data Sheet		
Index		J5
Description/Usage		Custodial room for general maintenance for the facility. One room is required within both the 'Secure' and the 'Non-Secure Area' of the building.
Ceiling Height		9'-0" minimum
Windows		N/A
Doors	Type	Hollow metal, 3'x7'
	Security/ Hardware	Keyed lock set
	View Panels/ Kick Plates	No view panels Kick Plates both sides of door
Finishes	Walls	Gypsum Board - Painted, Ceramic Tile at mop sink
	Floor	Tile or Resinous Epoxy
	Base	Tile or Resinous Epoxy
	Ceiling	Gypsum Board - Painted
Plumbing		Mop sink, floor drain
HVAC		Heating, ventilation, air conditioning. Exhaust directly outdoors
Fire Protection / Life Safety		Wet pipe sprinkler system
Power		Per UFC
Lighting		Per UFC
Communication	Tele.	N/A
	Data	N/A
	CCTV	N/A
	CATV	N/A
	Security	N/A
Acoustical		Per UFC 3-450-01 for Noise Control
Furnishings / Equipment / Casework		Mop shelf
Special Requirements		Water resistant gypsum board throughout.

Figure 2-J.3.6 Women's Toilet (Secure) Room Data Sheet		
Index		J6
Description/Usage		Toilet room serving female personnel in the facility. This room is located within the 'Secure Area' of the building.
Ceiling Height		9'-0" minimum
Windows		N/A
Doors	Type	Hollow metal, 3'x7'
	Security/ Hardware	Push-pull
	View Panels/ Kick Plates	No view panels Kick Plates both sides of doors
Finishes	Walls	Ceramic tile full height at wet walls; Gypsum Board - Painted
	Floor	Tile or Resinous Epoxy
	Base	Tile or Resinous Epoxy
	Ceiling	Gypsum Board - Painted
Plumbing		Sinks; toilets; floor drains in restroom areas
HVAC		Air Conditioned and heated restroom
Fire Protection		Wet pipe sprinkler system
Power		Per UFC
Lighting		Per UFC
Communication	Tele.	N/A
	Data	N/A
	CCTV	N/A
	CATV	N/A
	Security	N/A
Acoustical Requirements		Per UFC 3-450-01 for Noise Control
Furnishings, Equipment and Casework		Fixture count shall be determined by number of building occupants at maximum load per International Plumbing Code latest edition, Chapter 29; wall hung water closets; lavatories in counter tops.
Special Requirements		Water resistant gypsum board throughout. See RFP for accessories requirements.

Figure 2-J.3.7 Men's Toilet (Secure) Room Data Sheet		
Index		J7
Description/Usage		Toilet room serving Male personnel in the facility. This room is located within the 'Secure Area' of the building.
Ceiling Height		9'-0" minimum
Windows		N/A
Doors	Type	Hollow metal, 3'x7'
	Security/ Hardware	Push-pull
	View Panels/ Kick Plates	No view panels Kick Plates both sides of doors
Finishes	Walls	Ceramic tile full height at wet walls; Gypsum Board - Painted
	Floor	Tile or Resinous Epoxy
	Base	Tile or Resinous Epoxy
	Ceiling	Gypsum Board - Painted
Plumbing		Sinks; toilets; urinals; floor drains in restroom areas
HVAC		Air Conditioned and heated restroom
Fire Protection		Wet pipe sprinkler system
Power		Per UFC
Lighting		Per UFC
Communication	Tele.	N/A
	Data	N/A
	CCTV	N/A
	CATV	N/A
	Security	N/A
Acoustical Requirements		Per UFC 3-450-01 for Noise Control
Furnishings, Equipment and Casework		Fixture count shall be determined by number of building occupants at maximum load per International Plumbing Code latest edition, Chapter 29; wall hung water closets and urinals; lavatories in counter tops.
Special Requirements		Water resistant gypsum board throughout. See RFP for accessories requirements.

Figure 2-K.3.1 Telecommunications Room Data Sheet		
Index		K1
Description/Usage		Communication equipment and service.
Ceiling Height		9'-0" minimum
Windows		N/A
Doors	Type	Hollow metal, 3'x7', interior or exterior access is acceptable
	Security/ Hardware	Keyed lock set
	View Panels/ Kick Plates	Kick Plates
Finishes	Walls	CMU - Painted
	Floor	Sealed concrete
	Base	No Base
	Ceiling	Open to Structure - Painted
Plumbing		N/A
HVAC		Heated & Ventilated; Dedicated cooling for Communication equipment
Fire Protection		Wet pipe sprinkler system
Power		Per UFC; Connected to Backup Power
Lighting		Per UFC
Communication	Tele.	Per UFC
	Data	Per UFC
	CCTV	N/A
	CATV	N/A
	Security	N/A
Acoustical Requirements		N/A
Furnishings, Equipment and Casework		
Special Requirements		

Figure 2-K.3.2 Electrical Room Data Sheet		
Index		K2
Description/Usage		Electrical equipment and service
Ceiling Height		9'-0" minimum clearance
Windows		N/A
Doors	Type	Hollow metal, 3'x7', exterior access required
	Security/ Hardware	Keyed lock set
	View Panels/ Kick Plates	Kick Plates
Finishes	Walls	CMU - Painted
	Floor	Sealed concrete
	Base	No Base
	Ceiling	Exposed Structure - Painted
Plumbing		N/A
HVAC		Heated & Ventilated
Fire Protection		Wet pipe sprinkler system
Power		Per UFC
Lighting		Per UFC
Communication	Tele.	N/A
	Data	Per UFC for Energy Monitoring
	CCTV	N/A
	CATV	N/A
	Security	N/AB
Acoustical Requirements		N/A
Furnishings, Equipment and Casework		
Special Requirements		

Figure 2-K.3.3 Mechanical Room Data Sheet		
Index		K3
Description/Usage		Mechanical equipment and service
Ceiling Height		9'-0" minimum clearance
Windows		N/A
Doors	Type	Hollow metal, pair 3'x7', exterior access required
	Security/ Hardware	Keyed lock set
	View Panels/ Kick Plates	Kick Plates
Finishes	Walls	CMU – Painted
	Floor	Sealed concrete
	Base	No Base
	Ceiling	Exposed Structure - Painted
Plumbing		Floor drains as required
HVAC		Heated & Ventilated
Fire Protection		Wet pipe sprinkler system
Power		Per UFC
Lighting		Per UFC
Communication	Tele.	N/A
	Data	Per UFC for Energy Monitoring / EMCS
	CCTV	N/A
	CATV	N/A
	Security	N/A
Acoustical Requirements		Per UFC 3-450-01 for Noise Control
Furnishings, Equipment and Casework		
Special Requirements		

Figure 2-K.3.4 Fire Pump Room Data Sheet		
Index		K4
Description/Usage		Fire pump equipment and service
Ceiling Height		9'-0" minimum clearance
Windows		N/A
Doors	Type	Hollow metal, pair 3'x7', exterior access or access through Mechanical room
	Security/ Hardware	Keyed lock set
	View Panels/ Kick Plates	Kick Plates
Finishes	Walls	CMU – Painted
	Floor	Sealed concrete
	Base	No Base
	Ceiling	Exposed Structure - Painted
Plumbing		Floor drains as required
HVAC		Heated & Ventilated
Fire Protection		Wet pipe sprinkler system
Power		Per UFC
Lighting		Per UFC
Communication	Tele.	Per UFC
	Data	N/A
	CCTV	N/A
	CATV	N/A
	Security	N/A
Acoustical Requirements		Per UFC 3-450-01 for Noise Control
Furnishings, Equipment and Casework		
Special Requirements		

Figure 2-L.3.1GCS Mobile Cockpit Unit Room Data Sheet		
Index		L1
Description/Usage		
Ceiling Height		N/A
Windows		N/A
Doors	Type	N/A
	Security/ Hardware	N/A
	View Panels/ Kick Plates	N/A
Finishes	Walls	N/A
	Floor	N/A
	Base	N/A
	Ceiling	N/A
Plumbing		Hose Bib
HVAC		n/a
Fire Protection		Per UFC
Power		Per UFC; Connected to Backup Power
Lighting		Per UFC
Communication	Tele.	Per UFC
	Data	Per UFC; Dedicated Fiber to Server Room
	CCTV	Per UFC for SCIF Requirements for Mobile GCS
	CATV	n/a
	Security	Per UFC for SCIF Requirements for Mobile GCS
Acoustical Requirements		N/A
Furnishings, Equipment and Casework		
Special Requirements		

Figure 2-CIRCULATION 3.1 Entrance Vestibule Data Sheet		
Description/Usage		The Entrance Vestibule is the only point of entry to the facility into the Non-Secure area. Vestibule also serves a weather enclosure.
Ceiling Height		9'-0" minimum
Windows		No windows
Doors	Type	Aluminum framed with glass, pair 3'x7', exterior and interior
	Security/ Hardware	Keyed lock set
	View Panels/ Kick Plates	View Panels, 5"x20" Kick Plates both sides of doors
Finishes	Walls	Gypsum Board - Painted
	Floor	Recessed floor mat
	Base	Resilient or Tile
	Ceiling	Gypsum Board – Painted or Exposed Structure – Painted
Plumbing		N/A
HVAC		Heating as allowed per UFC, ventilation
Fire Protection		Wet pipe sprinkler system
Power		Per UFC
Lighting		Per UFC
Communication	Tele.	Telephone to General Administration Office
	Data	N/A
	CCTV	N/A
	CATV	N/A
	Security	Access Controls into Building
Acoustical		Per UFC 3-450-01 for Noise Control
Furnishings, Equipment and Casework		
Special Requirements		Recessed entrance floor mat.

Figure 2-CIRCULATION 3.2 Non-Secure Circulation Data Sheet		
Description/Usage		This data sheet is for circulation or Corridor spaces within the 'Non-secure area. The Corridor may become part of various Modules.
Ceiling Height		9'-0" minimum
Windows		N/A
Doors	Type	Hollow metal, 3'x7', single or pair, egress only to exterior.
	Security/ Hardware	Keyed lock set
	View Panels/ Kick Plates	No view panels Kick Plates both sides of doors
Finishes	Walls	Gypsum Board - Painted
	Floor	Sealed concrete, Stained concrete or Tile
	Base	Resilient or Tile
	Ceiling	Acoustical Ceiling Tile or Exposed Structure - Painted
Plumbing		EWC (Electric Water Cooler), two
HVAC		Heating, ventilation, air conditioning
Fire Protection		Wet pipe sprinkler system
Power		Per UFC
Lighting		Per UFC
Communication	Tele.	N/A
	Data	N/A
	CCTV	N/A
	CATV	N/A
	Security	N/A
Acoustical Requirements		N/A
Furnishings, Equipment and Casework		
Special Requirements		

Figure 2-CIRCULATION 3.3 Secure Circulation Data Sheet		
Description/Usage		
This data sheet is for circulation or Corridor spaces within the 'Secure' areas. There will be secure entry from "Non-Secure' Corridors to the 'Secure' Corridor. Corridors in 'Secure Area' shall be 8' wide near Cockpits, Simulator and to exterior for movement of Cockpit, simulator equipment. A 'Man Trap' shall separate the 'non-secure' corridor from the 'secure'corridor.		
Ceiling Height		
9'-0" minimum		
Windows		
N/A		
Doors	Type	Hollow metal, 3'x7', single or pair, egress only to exterior.
	Security/ Hardware	X-10 high security lockset, card reader, electronic strike at Man Trap and door to GCS Mobile Unit
	View Panels/ Kick Plates	No view panels Kick Plates both sides of doors
Finishes	Walls	Gypsum Board - Painted
	Floor	Sealed concrete, Stained concrete or Tile
	Base	Resilient or Tile
	Ceiling	Acoustical Ceiling Tile or Exposed Structure - Painted
Plumbing		
EWC (Electric Water Cooler); one		
HVAC		
Heating, ventilation, air conditioning		
Fire Protection		
Wet pipe sprinkler system		
Power		
Per UFC		
Lighting		
Per UFC		
Communication	Tele.	N/A
	Data	N/A
	CCTV	N/A
	CATV	N/A
	Security	Intrusion Detection and Access Controls
Acoustical Requirements		
N/A		
Furnishings, Equipment and Casework		
Special Requirements		
IDS and ACS to secure the overall secured area boundary in accordance with ICD-705.		

2.4.F. Floor Plan

The floor plan below is a composite of the Modules within the approved Functional Adjacency Diagram which is based on the criteria listed within this Standard Design document. The scaled drawing showing conceptual fixture and furniture information is located within the Standard Design drawings.



2.4.G. Interactive Programming Worksheet

This tool is provided in two formats. A snapshot of the programming sheet is provided in this section primarily as a reference and reflects the baseline standard facility program based on the criteria as discussed in this document. The additional interactive programming sheet provides a tool for planners and programmers. It allows the input of authorized personnel positions and special purpose spaces. Updated inputs are automatically calculated and provide new required square footage for each space and the estimated overall facility size.

MODULE NO.	AREA	NO. OCCUP	SF PER USER	NO. OF ROOMS REQUIRED	INDIVIDUAL ROOM ROOMNTS SF	NET USER REQUIREMENTS		COMMENTS
						SF	SM	
A GCS / GCS SOC SUPPORT								
A1	MASS BRIEFING ROOM	160		1	2,330	2,330	216.46	2
A2	AUDIO / VISUAL STORAGE			1	60	60	5.57	2
A3	FLIGHT COMM / NCOIC OFFICE	2		8	265	2,120	196.96	2
A4	GCS BRIEFING	8		15	210	3,150	292.64	2
A5	COCKPIT	3		4	375	1,500	139.35	2
A6	SIMULATOR	3		1	375	375	34.84	2
A7	SPARE	3		1	375	375	34.84	2
A8	IOS SIMULATOR OPERATORS	2		1	210	210	19.51	2
	GCSU SOC CIRCULATION			1	670	670	62.24	10
SUBTOTAL GCS/GCS SOC SUPPORT AREA						16,790	1,602.39	
B GCS COMMS MAINTENANCE								
B1	TOOL CTR	1		1	415	415	38.55	2
B2	PRODUCTION OFFICE	5		1	395	395	36.70	2
B3	SECTION CHIEF	2		1	135	135	12.54	2
B4	OIC OFFICE	1		1	95	95	8.83	2
B5	SUPERVISOR OFFICE	1		1	95	95	8.83	2
B6	RPA COMMS	2		1	135	135	12.54	2
B7	MAINTENANCE ADMINISTRATION	9		1	520	520	48.31	2
B8	CONFERENCE ROOM	8		1	180	180	16.72	2,5
B9	TECH ROOM	4		1	310	310	28.80	2
	GCS COMM CIRCULATION			1	490	490	45.52	10
SUBTOTAL GCS COMMS MAINTENANCE AREA						2,770	257.33	
C ADMINISTRATION SUITE								
C1	SECURITY OFFICE	9		1	545	545	50.63	4
C2	SARM OFFICE	2		2	160	320	29.73	4
C3	OPS SUPERVISOR OFFICE	3		1	255	255	23.68	4
C4	SARM	4		1	265	265	24.62	4
C5	SCHEDULING OFFICE	11		1	655	655	60.85	4
C6	TRAINING OFFICE	11		1	655	655	60.85	4
C7	STANDARDS / EVALUATION	11		1	655	655	60.85	4
C8	TESTING	11		1	655	655	60.85	4
SUBTOTAL ADMINISTRATION SUITE AREA						4,605	372.66	
D COMMAND SUITE								
D1	DWELL OPEN OFFICE	7		1	430	430	39.92	4
D2	GENERAL ADMINISTRATION	4		1	290	290	26.94	4
D3	DIRECTOR OFFICE	1		1	150	150	13.94	4
D4	CHIEF ENLISTED MGR OFFICE	1		1	150	150	13.94	4
D5	SECRETARY	1		1	155	155	14.40	4
D6	COMMANDER OFFICE	1		1	200	200	18.58	4
D7	CONFERENCE ROOM	30		1	400	400	37.16	4,5
D8	ADMINISTRATION SUPPORT			1	95	95	8.83	4
D9	HUMAN PERFORMANCE TEAM	3		1	205	205	19.04	4
SUBTOTAL COMMAND SUITE AREA						2,675	192.77	
E SQUADRON OPERATIONS CENTER								
E1	INTEL OFFICE	7		1	630	630	58.52	2
E2	WEAPONS OFFICE	7		1	625	625	58.04	2
E3	GROUND LIAISON OFFICE	2		1	215	215	19.97	2
E4	DO OFFICE	1		1	115	115	10.68	2
E5	OPS SUPERINTENDENT OFFICE	1		1	115	115	10.68	2
E6	ADO OFFICE	2		1	225	225	20.90	2
E7	SPECIAL SECURITY OFFICE	2		1	225	225	20.90	2
E8	MISSION PLANNING	20		1	565	565	52.48	2
E9	SOC	12		1	2,355	2,355	218.76	2
	SO OPS CIRCULATION			1	460	460	42.73	10
SUBTOTAL SQUADRON OPERATIONS CENTER AREA						5,630	513.74	
F SERVER ROOM								
F1	SERVER ROOM			1	3,270	3,270	303.78	2
SUBTOTAL DATA CENTER AREA						3,270	303.78	
G READY ROOM								
G1	READY ROOM	48		1	1,255	1,255	116.59	1, 3
G2	RECYCLING			1	75	75	6.97	1, 3
G3	MOTHER'S ROOM	1		1	95	95	8.83	1
SUBTOTAL READY ROOM/LOUNGE AREA						1,425	132.38	
H REST & RELAXATION								
H1	REST & RELAXATION	4		2	175	350	32.52	1.6
SUBTOTAL REST & RELAXATION AREA						350	32.52	
J TOILET/SHOWER/LOCKER								
J1	MEN'S TOILET	100		1	310	310	28.60	6
J2	MEN'S LOCKER/SHOWER ROOM			1	585	585	54.35	6
J3	WOMEN'S TOILET			1	310	310	28.60	6
J4	WOMEN'S LOCKER/SHOWER ROOM	100		1	585	585	54.35	6
J5	JANITOR			2	45	90	8.36	6
J6	WOMEN'S TOILET (SECURE)			1	250	250	23.23	6
J7	MEN'S TOILET (SECURE)			1	245	245	22.70	6
SUBTOTAL TOILET / SHOWER / LOCKER AREA						2,375	220.64	
K BUILDING SUPPORT								
K1	COMMUNICATIONS			1	240	240	22.30	7
K2	ELECTRICAL			1	240	240	22.30	7
K3	MECHANICAL			1	1,255	1,255	116.59	7
K4	FIRE PUMP			1	495	495	45.93	7
SUBTOTAL BUILDING SUPPORT AREA						2,230	207.11	
L GCS MOBILE COCKPIT UNIT								
L1	GCS MOBILE UNIT			1	N/A	N/A	N/A	
SUBTOTAL MOBILE COCKPIT AREA						N/A	N/A	
CIRCULATION								
	Facility Corridor	0		1	8,635	6,580	611.75	10
	Men Trap(s)	0		2	45	90	8.36	10
	Entry Vestibule	0		1	75	75	6.97	10
TOTAL FACILITY NET FLOOR AREA						32,990	3,027.61	5,10.12
CIRCULATION MULTIPLIER						10%		10
NET TO GROSS MULTIPLIER						24%		6
TOTAL FACILITY GROSS AREA (ROUNDED)						44,455	4,129.87	61.12
COMMENTS:								
1	Reference Tables in Chapter 6 of Air Force Manual 32-1084 for additional information.							
2	Per AFM 32-1084 - Table 6.3, this area falls within the SCIF category and is sized per User Justification.							
3	Ready Room is a Special Purpose Room as defined in Chapter 6 of AFMAN 32-1084 and can also serve as Classroom, sized per Table 6.4 Classroom (up to 75) of AFMAN 32-1084; 84 occupants multiplied by 25 sf per occupant for a maximum of 1020 sf; portion of this area is allocated to a Recycling Room.							
4	Administration Areas include circulation factor of 10% per Chapter 1 Air Force Manual 32-1084.							
5	Team Meeting/Min-Conference Room, Conference Room per Table 6.4.							
6	Male/Female ratio of 50/50. Actual fixture count shall be based on International Plumbing Code, latest edition, Chapter 29 and the UFC 3-420-01, latest edition, Plumbing Systems. This 50/50 ratio shall be verified at each installation.							
7	Building Support areas are estimates only and actual size is dependent on requirements for climate zone, location, system, etc. (Sf, Ft. not included in Total Concept Plan Net Floor Area as this area is included in Net to Gross Multiplier of 25%).							
8	Net to Gross multiplier of 24% is recommended for this facility; AFM 32-1084 Chapter 1, paragraph 1.10.3 Net-to-Gross multiplier of up to 25%.							
9	Includes all related areas for this facility class listed in Air Force Manual 32-1084, Chapter 1 and Chapter 6.							
10	Circulation areas are estimates only (Sf, Ft. not included in Total Concept Plan Net Floor Area as this area is included in Circulation multiplier of 10% per AFMAN32-1084 as well as included Net to Gross Multiplier of 25% per AFMAN32-1084).							
11	All area SFs are rounded to the nearest whole 5 number.							
12	The Standard Design Plan as indicated in Section 2.4.F of the Standard Design Document represents a facility of approximately 44,455 SF.							